

Emergency Evacuation Assembly Points

Evacuation Assembly Points are available in this document for the Sites listed below. If your site is not listed please ask your supervisor or Intel sponsor for the location of your emergency evacuation assembly point.

Region	State	Site	Region	Country	Site	Region		
Americas	Arizona	Ocotillo	Asia	China	Beijing GTC Beijing RYC	EMEA	Austria	Linz
	Arizona	Chandler		China	Chengdu		Belgium	Brussels
	California	Santa Clara		China	Dalian		Egypt	Cairo
	California	Folsom		China	Hong Kong		Finland	Espoo
	Canada	Vancouver		China	Shanghai SHZ		France	Nantes Sophia Montpellier
	Colorado	Fort Collins & Longmont		China	Shenzen		Germany	Aalborg Campeon Duisburg Dresden Munich - Fejdkirchen
	Mass	Hudson		China	Xian		Ireland	Leixlip Shannon
	New Mexico	New Mexico		India	Bangalore- EMB & Ecospace		Israel	Lachish
	Oregon	Ronler Acres		India	Bangalore – SRR & BGA		Kazakhstan	Alma-ata
	Oregon	Aloha		India	Bangalore ITP		Netherlands	Amsterdam
	Texas	Austin		India	Delhi - Pune		Poland	Gdansk Gdynia Warsaw
				Japan	Japan		Romania	Bucharest
				Korea	Korea		Russia	Moscow Nizhny Novgorod
				Malaysia	Kulim Penang		Spain	Madrid Barcelona
		Taiwan	Taiwan	Turkey	Istanbul			
		Vietnam	Vietnam	UK	Swindon Winnersh Lincoln			
				Ukraine	Kiev			
LAR								

--	--	--	--	--	--	--	--

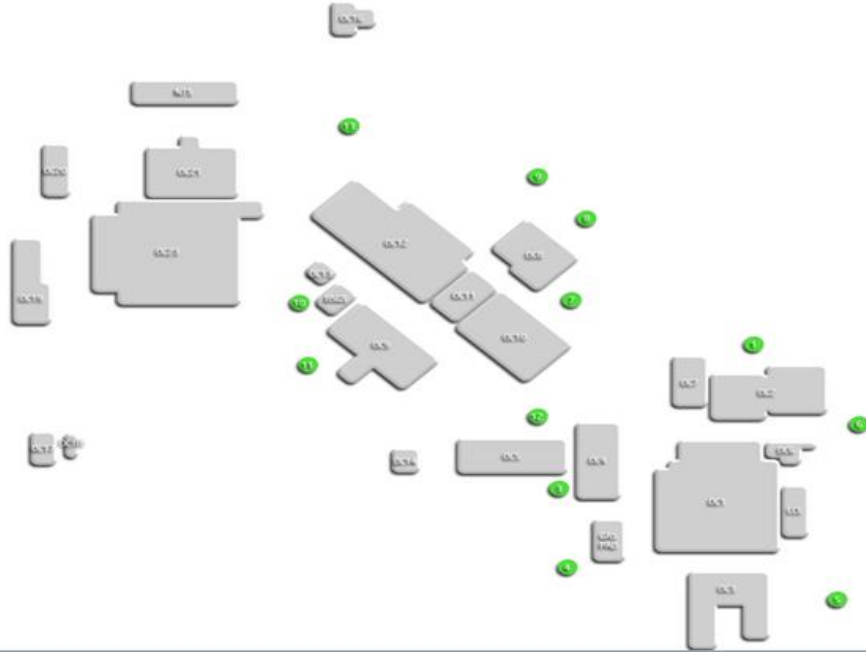
Americas Region

Chandler

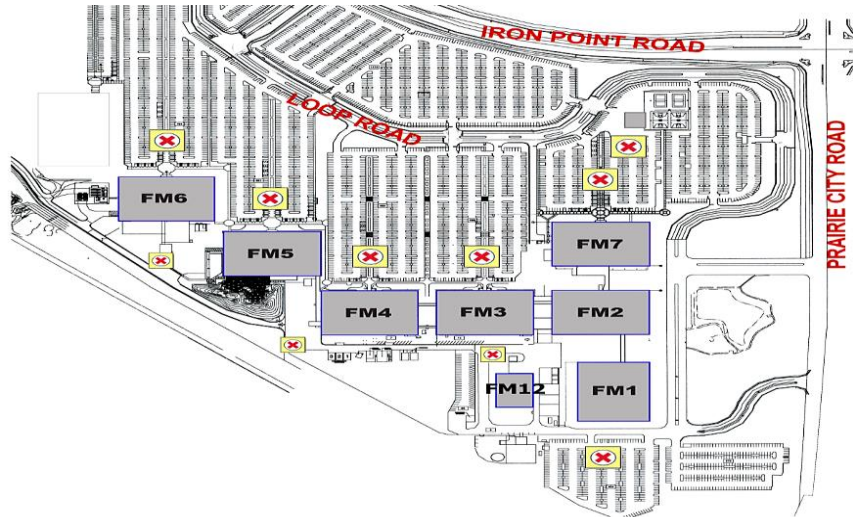


Ocotillo

Intel Ocotillo Site Evacuation points (non CSC)
 When in doubt go to any Evacuation point

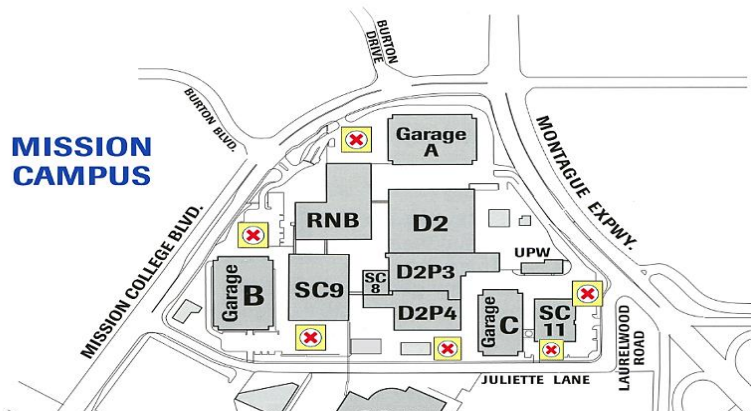


Folsom



FM emergency #

Santa Clara Mission



Intel Confidential
 April 2017
 Owner Lucy Dodd

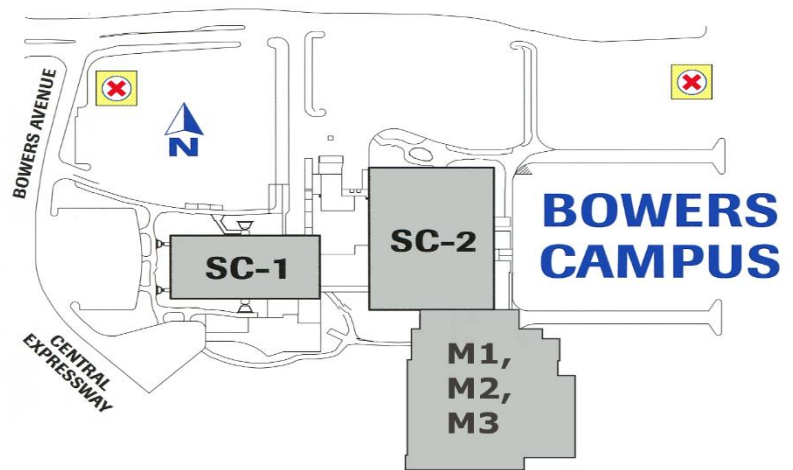


SC emergency #

Santa Clara Bowers



SC emergency #



Colorado

Fort Collins

Assembly Points:

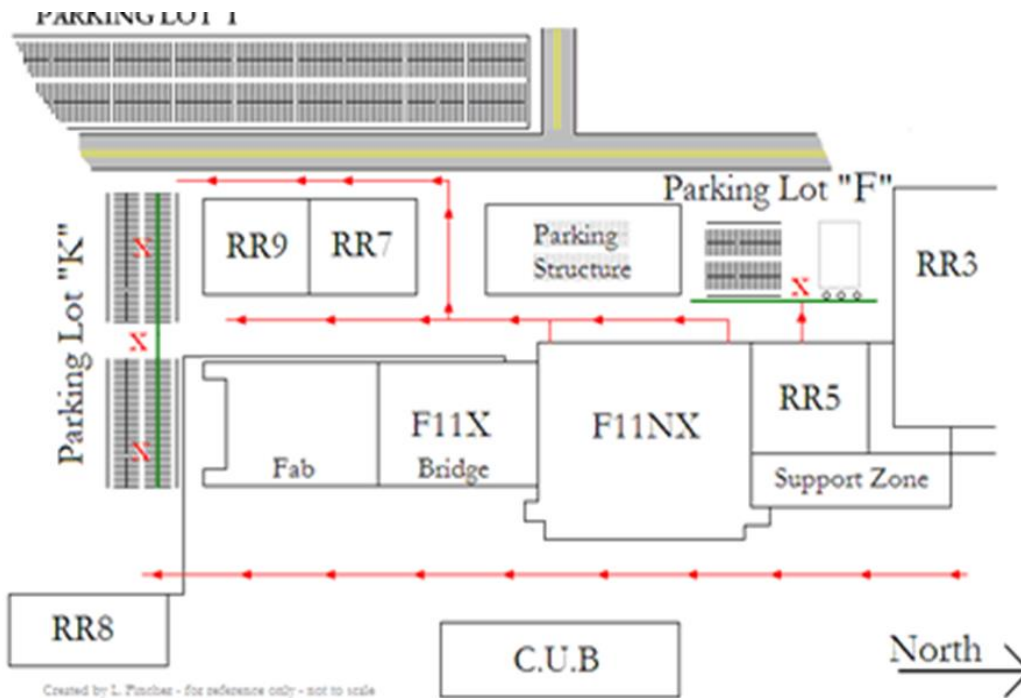
Four Assembly Points with signs at the four corners of the Parking Lot.

Longmont

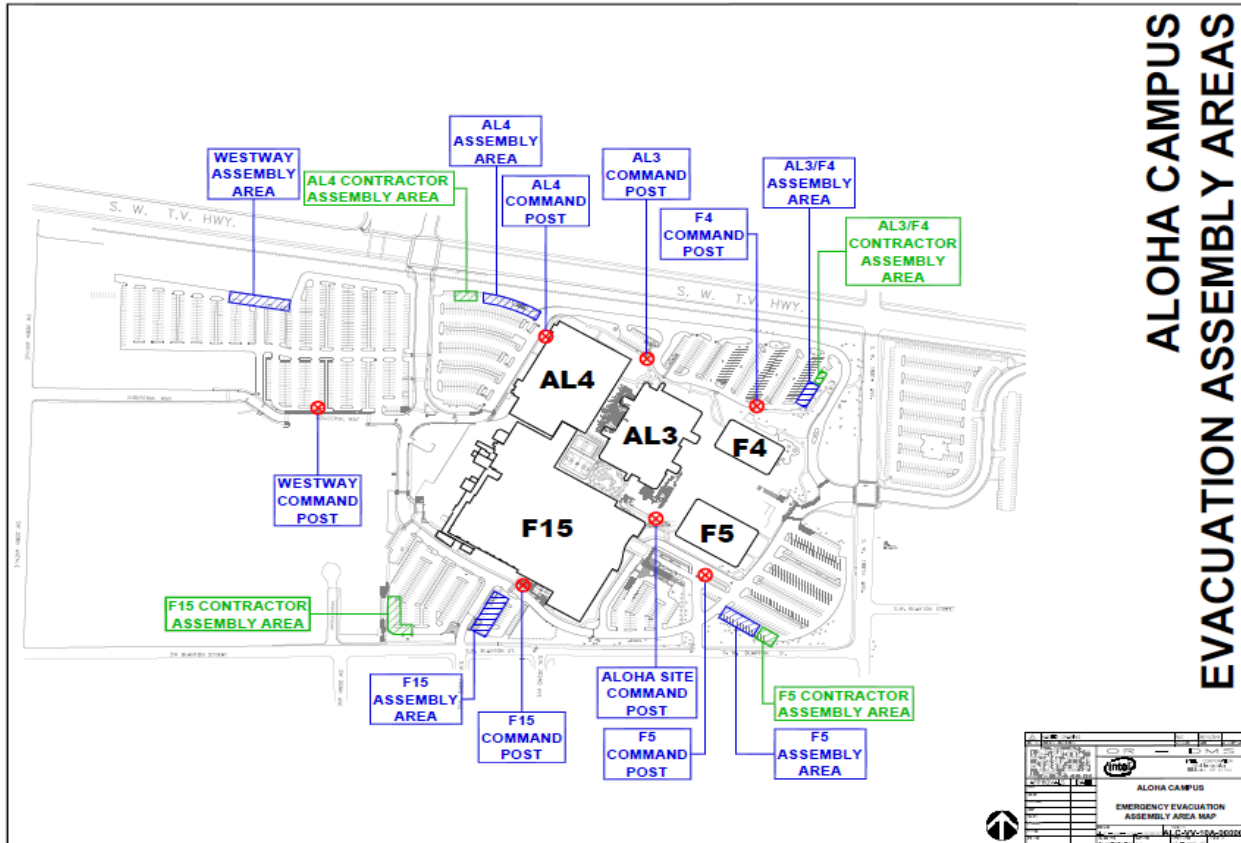
Assembly Points:

Assembly point is located at the Main Entrance to the Building.

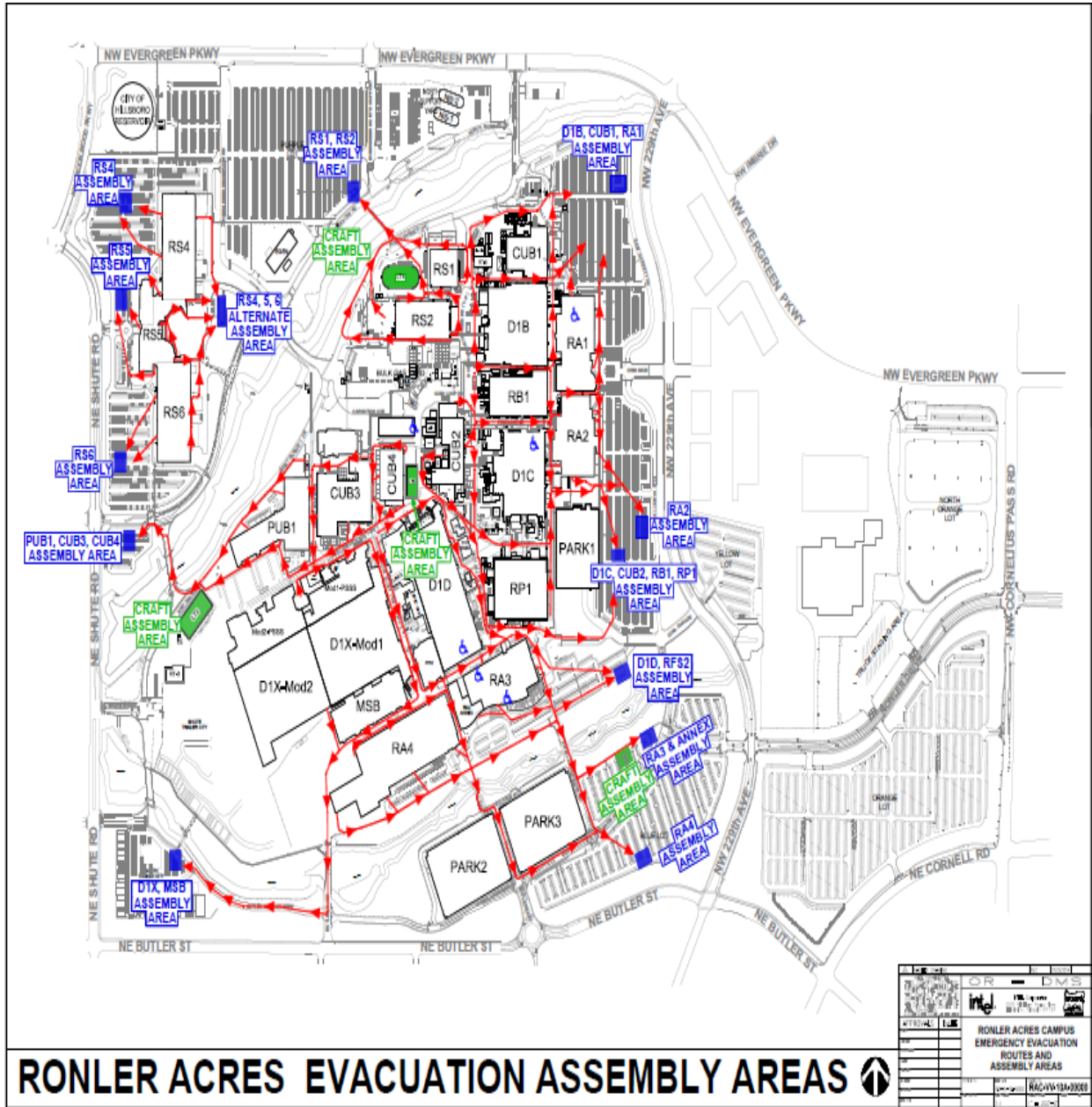
New Mexico



Oregon Aloha



Oregon Ronler Acres



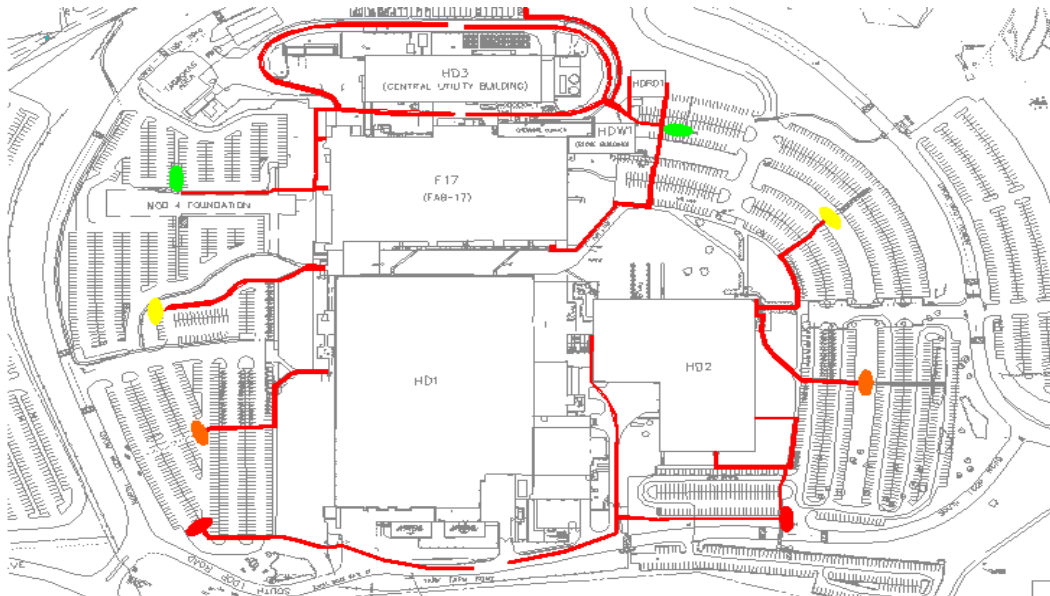
Austin

Building Evacuation Strategy

- Reference Evacuation route / Assembly point maps **PRIOR** to a building Evacuation
- Maps are posted in main corridors throughout the Office areas
- Building fire Alarm system directs when to evacuate the entire building.

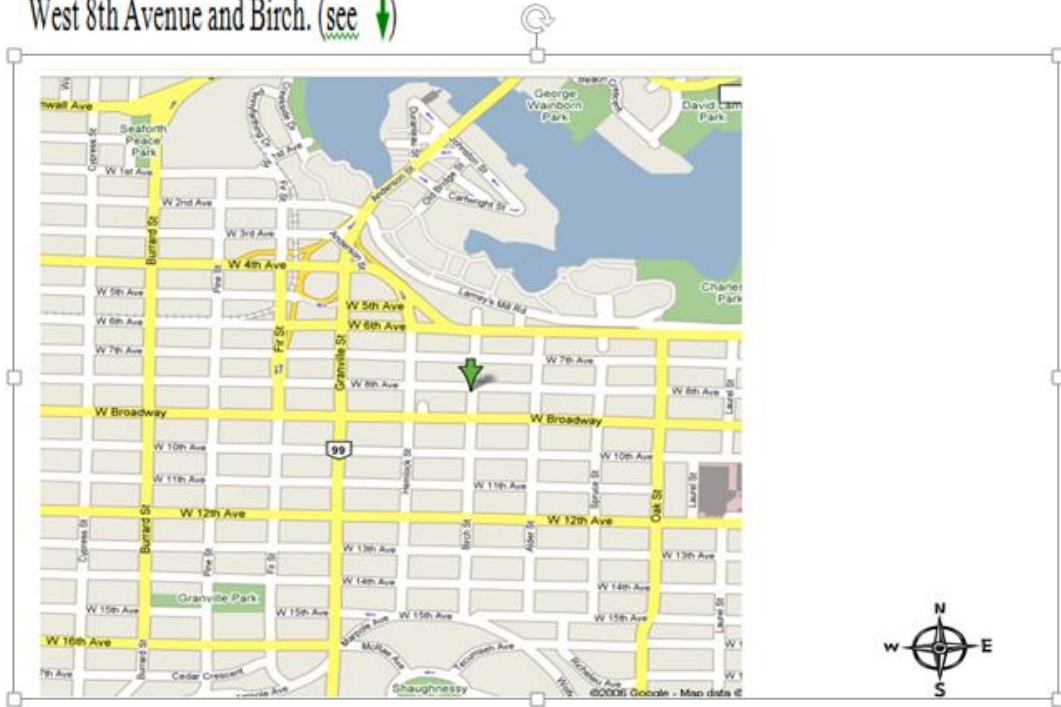


Hudson



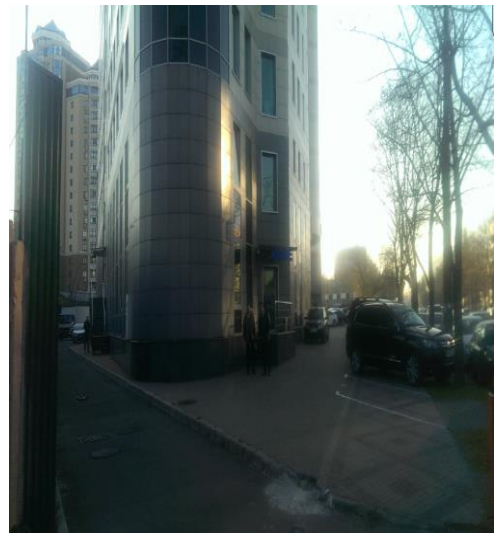
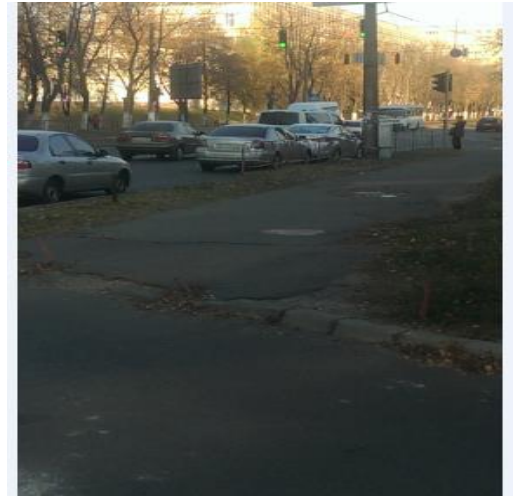
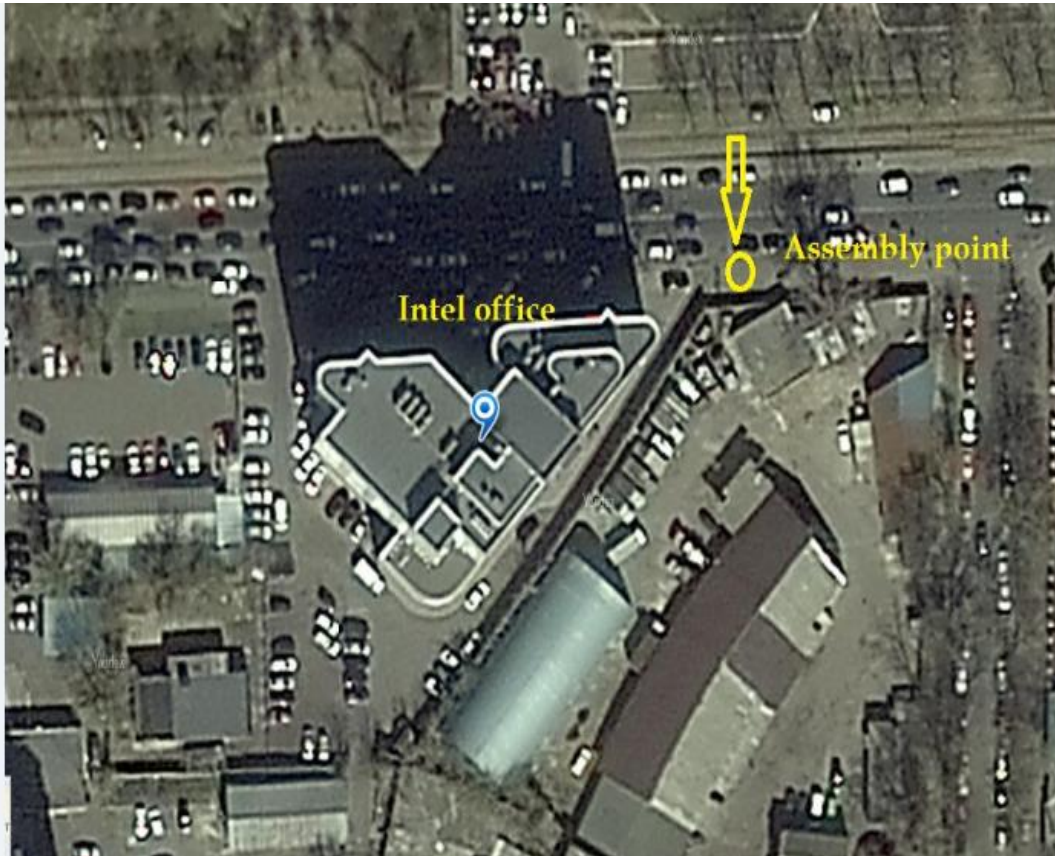
Canada – Vancouver

Upon evacuation of this building, all employees/visitors will meet at the SW corner of West 8th Avenue and Birch. (see ↓)



EMEA

Ukraine – Kiev



Finland – Espoo

Westend Emergency Assembly Point Map



Romania – Bucharest



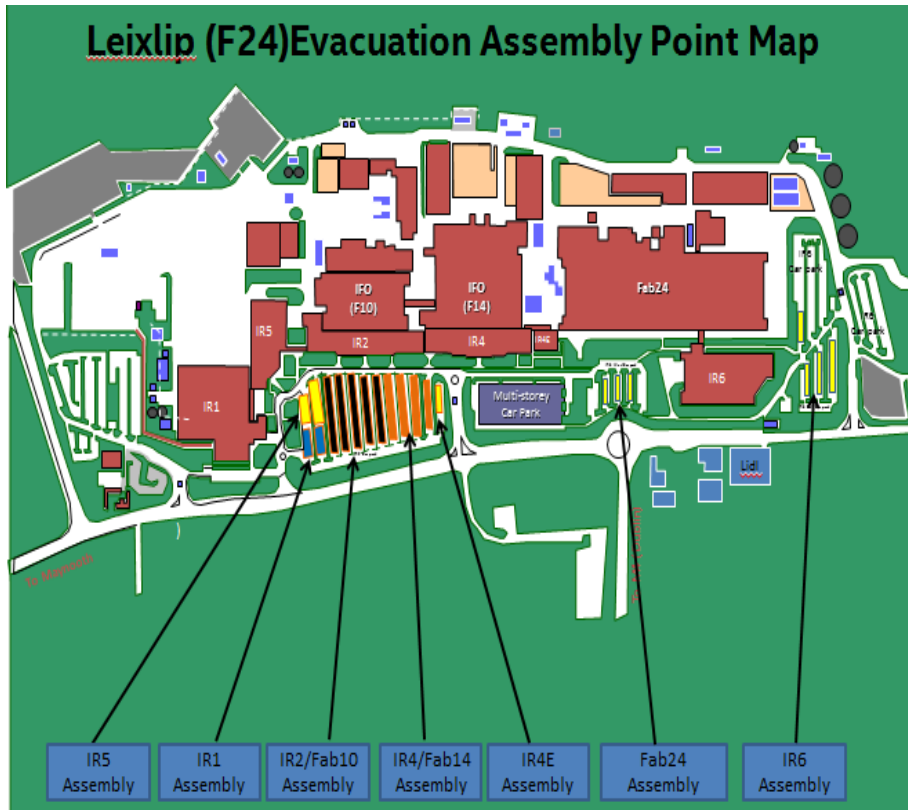
Evacuation Route



Intel Assembly Area

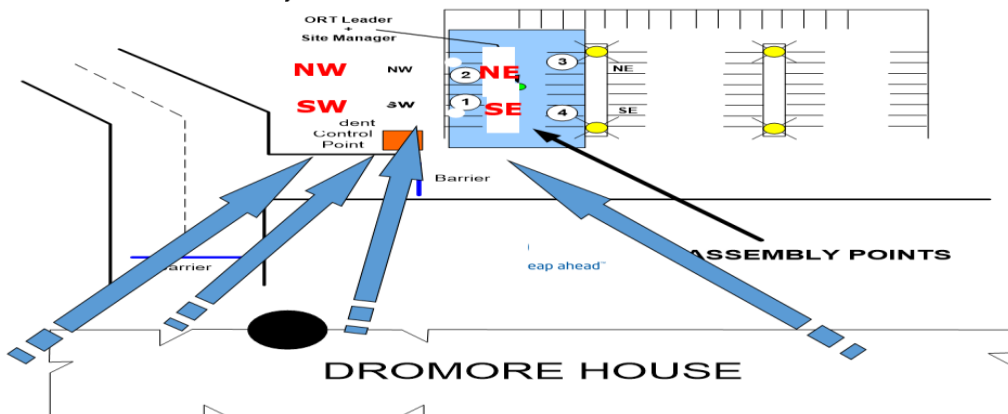
April 2017
Owner Lucy Dodd

Ireland – Leixlip



Ireland – Shannon

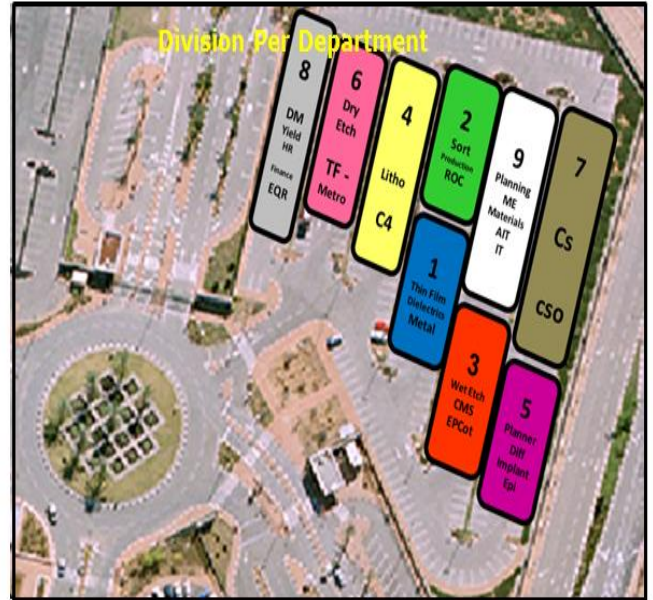
Brookvale Plaza Assembly Point



F28 Assembly Area



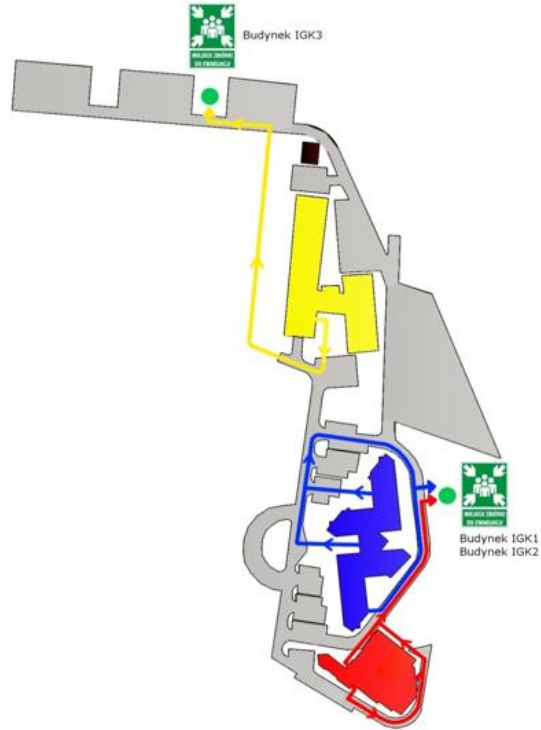
F28 Assembly Area



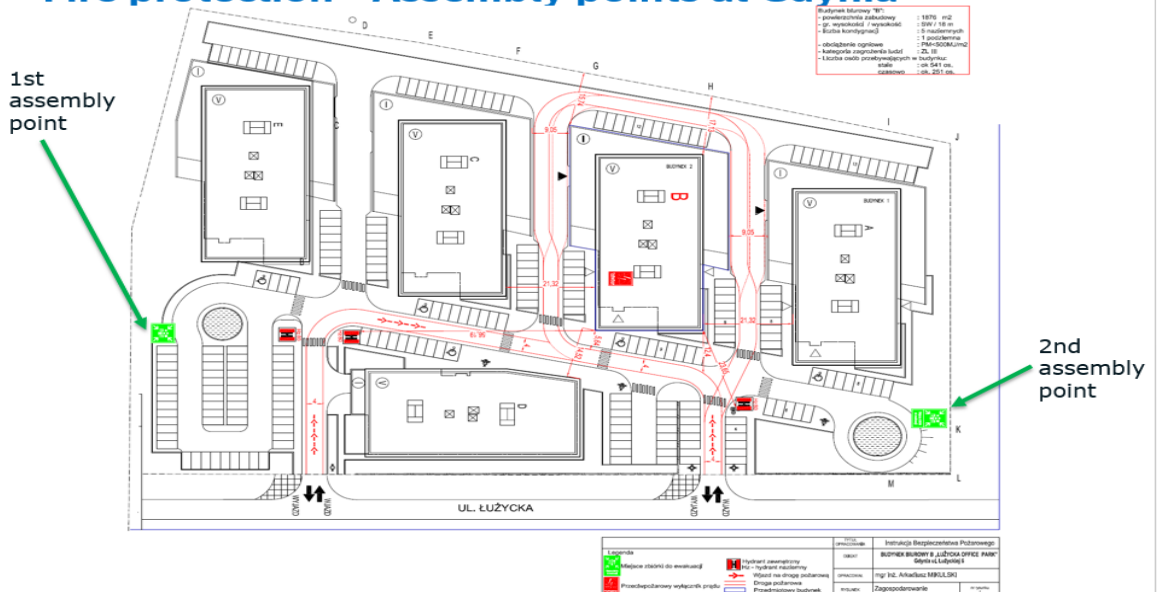
Fire protection - Assembly points at Gdansk

Assembly points are:

- Behind IGK1, IGK2 buildings
- and IGK3.



Fire protection - Assembly points at Gdynia



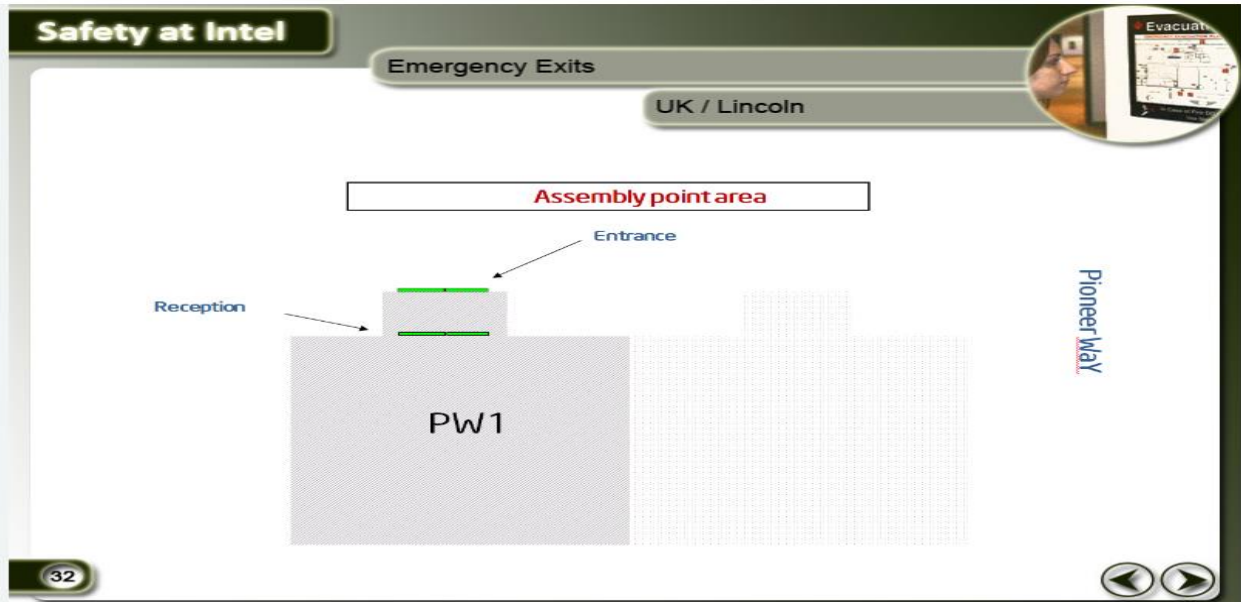
Poland Warsaw

INSTRUKCJA BEZPIECZEŃSTWA POŻAROWEGO JEROZOLIMSKIE BUSINESS PARK

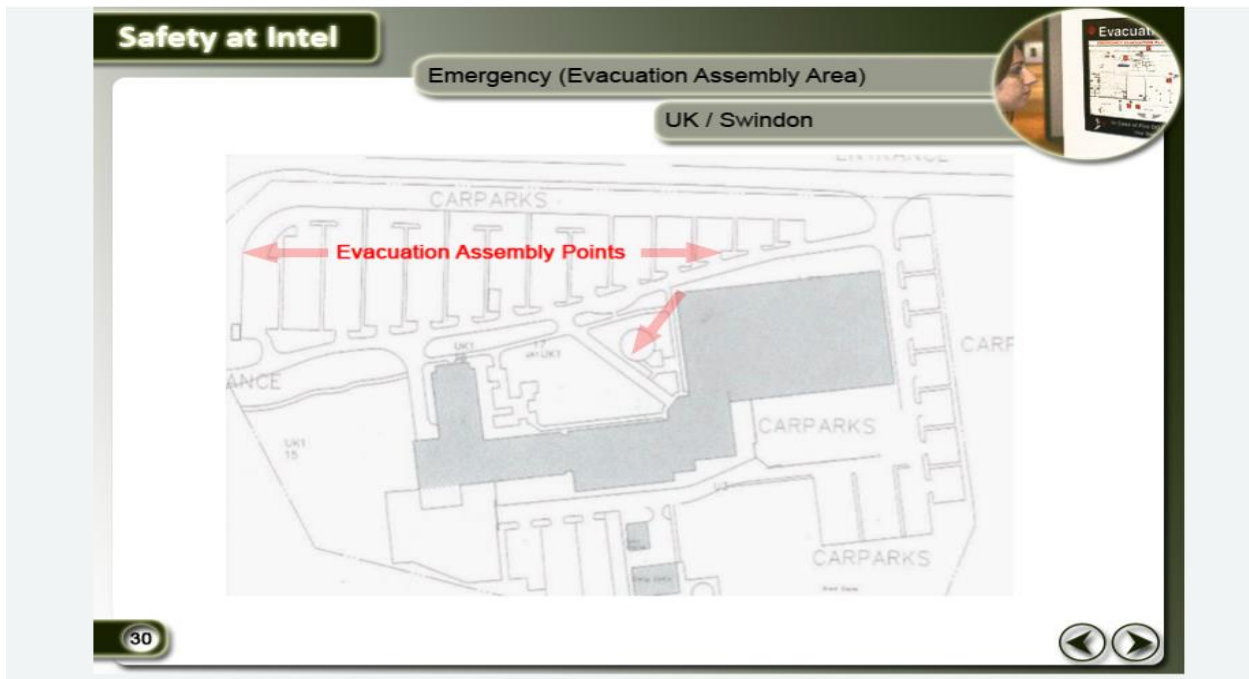
AL. JEROZOLIMSKIE 146 A, 02-305 WARSZAWA



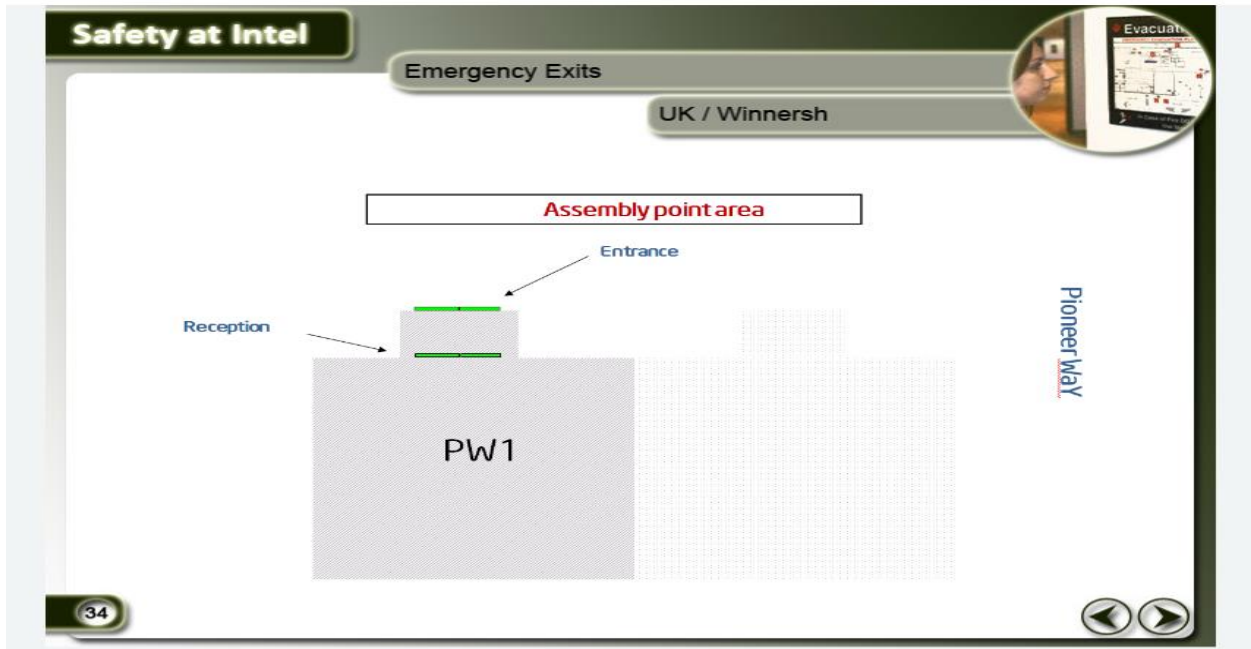
UK - Lincoln



UK - Swindon



UK - Winnersh



Spain – Barcelona

Safety at Intel

Evacuation Assembly area – 1st and 3rd Floors

Spain / Barcelona



42

Spain - Madrid

Drag the cursor around the area you want to capture.

Safety at Intel

Evacuation Assembly Area

Spain / Madrid

Bomba de agua/
 water pump

Punto de Encuentro
Meeting point:
 Farmacia Azca Nivel 0
 Azca Pharmacy ground floor

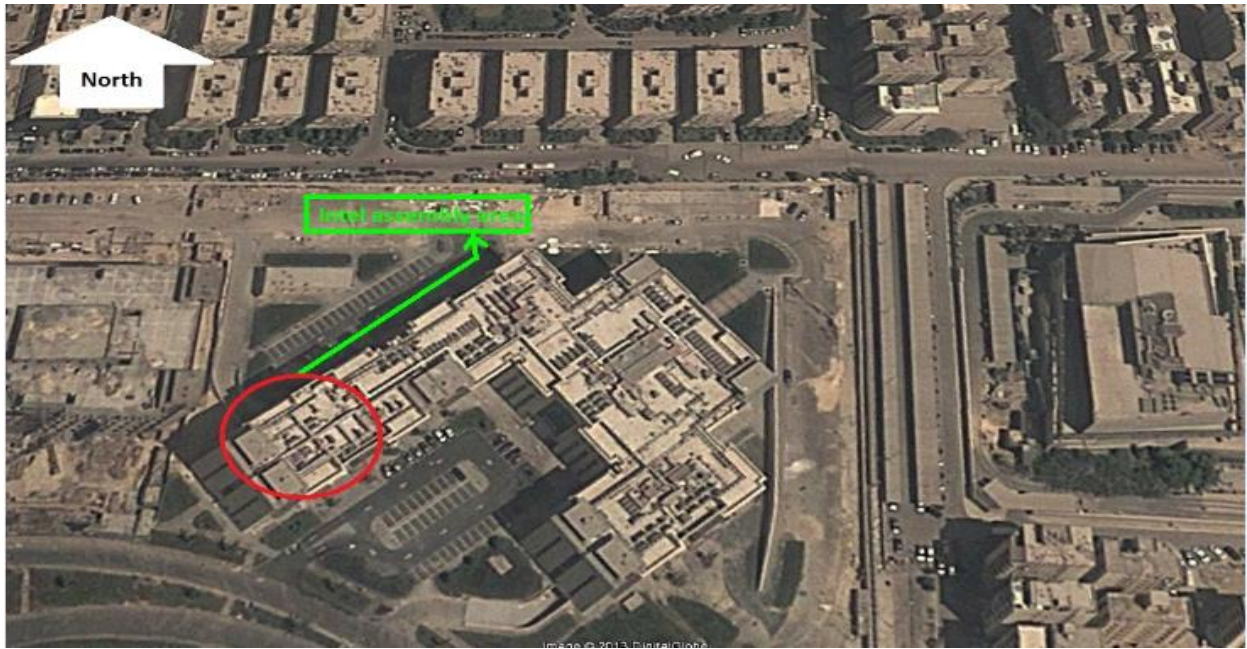
45

Kazakhstan



Egypt – Cairo

Intel Confidential
 April 2017
 Owner Lucy Dodd



Turkey – Istanbul



Austria – Linz
Intel Confidential
April 2017
Owner Lucy Dodd

The assembly point is located in the carpark area outside the building,



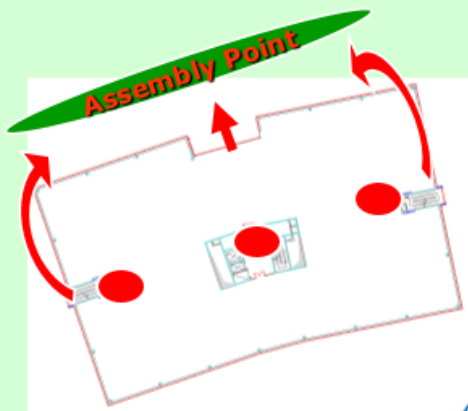
Russia – Moscow

In case of **Emergency**, the alarm system will sound or Security/ Emergency Response Team (ORT) will call for evacuation. All visitors must leave the building immediately, following evacuation signs.



Never use elevator during evacuation.

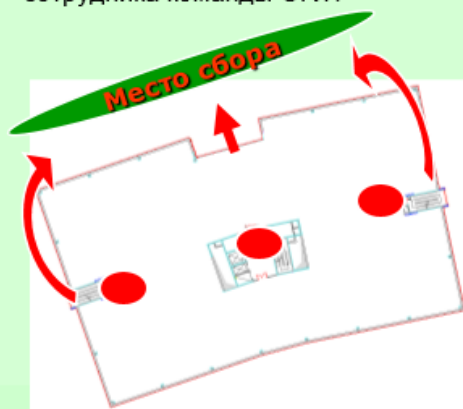
Follow to **Assembly point** (Far end of the Parking) and return after permission of ORT representative only.



В **Чрезвычайных Ситуациях** в офисе сработает система звукового оповещения или сотрудник охраны / Команды быстрого реагирования (ORT) объявят об эвакуации. Все посетители должны немедленно покинуть здание, следуя эвакуационным знакам.



Никогда не пользуйтесь лифтом во время эвакуации. Следуйте **к Месту сбора** (дальняя часть парковки). Вернуться в здание можно только после разрешения сотрудника команды ORT.



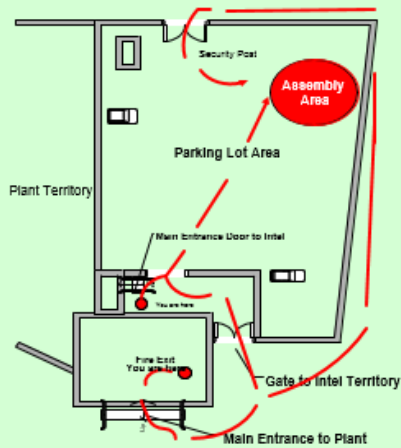
Russia - Nizhniy Novgorod

In case of **Emergency**, the alarm system will sound or Security/ Emergency Response Team (ERT) will call for evacuation. All visitors must leave the building immediately, following evacuation signs.



Never use elevator during evacuation.

Follow to **Assembly point** (at the Parking) and return after permission of ERT representative only.



В **Чрезвычайных Ситуациях** в офисе сработает система звукового оповещения или сотрудник охраны / Команды быстрого реагирования (ERT) объявят об эвакуации. Все посетители должны немедленно покинуть здание, следуя эвакуационным знакам.



Никогда не пользуйтесь лифтом во время эвакуации. Следуйте **к Месту сбора** (парковка). Вернуться в здание можно только после разрешения сотрудника команды ERT.



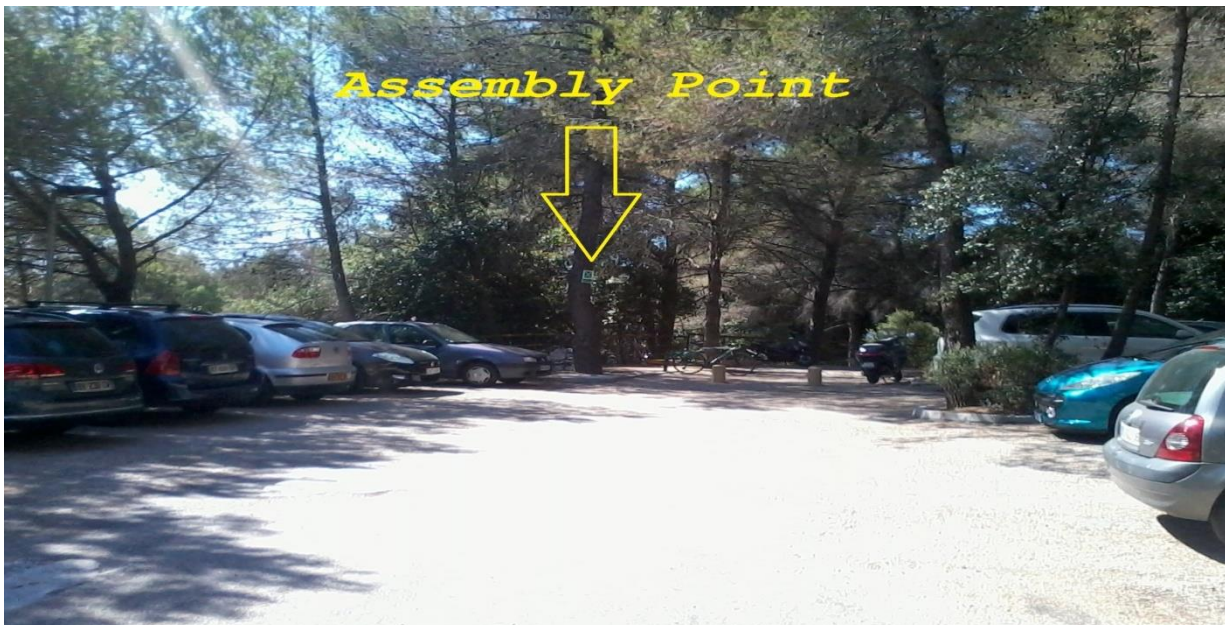
Netherlands – Amsterdam



France – Nantes



France – Sophia



France – Montpellier



Belgium – Brussels

Assembly point



Froissartstraat 107-1040 Brussel (Best House)



Information Site Safety Campeon

Important note


Please indicate at all calls (emergencies and disruptions) your exact location (building, floor, room number).

Address: IFX Technologies AG, Am Campeon 1-12, 85579 Neubiberg.

Emergency Telephone Numbers

Accident / Fire / Security **Tel. 112**
(with the mobile phone: **Tel. 089 234 112**)

Alarm Signals (sirens)

Evacuation alarm: 
rising and falling wailing sound

What to do in an Emergency

In Case of an Accident

- 1. Report accident Tel. 112**
Who is reporting?
Where did it happen?
What happened?
How many are injured?
- 2. Immediate actions**
Cordon off scene of accident.
Administer first aid.
Follow instructions.
- 3. Further actions**
Direct ambulance or firemen to scene of accident.
Disperse crowd.

In Case of Fire

- 1. Report fire Tel. 112 or**
Press fire alarm button.
Who is reporting?
Where is the fire?
What is burning?
How many are injured?
- 2. Immediate actions**
Determine whether anyone is in danger.
Rescue people before fighting fire.
If possible, try to put out fire.
Do not endanger yourself.
Close windows and doors.
- 3. Leave danger zone**
Take endangered people away.
Help disabled people.
Follow escape routes, using emergency exits.
Do not use elevators.
Follow instructions.

During Evacuation

- 1. Alarm**
Listen carefully for alarm signal.
Pass information on to others.
- 2. Immediate actions**
Look up important documents.
Take personal belongings with you.
Put on outdoor clothing.
Close windows and doors.
- 3. Leave danger zone**
Help disabled people.
Follow escape routes, using emergency exits.
Do not use elevators.
Go to predetermined gathering place.
Follow instructions.

Important Telephone Numbers

With the mobile phone: Tel. 089 234

Facility Management	Tel. 2 22 12
Security Control Center	Tel. 2 22 22
Company Physician	Tel. 2 22 02
Occupational Dept.	Tel. 2 44 20
Environmental Protection	Tel. 2 44 90
Company Fire Dept.	Tel. 2 23 24
Technical Services	Tel. 2 23 47
Storage and Transport	Tel. 2 39 13
Casino	Tel. 2 55 47
Fault Complaint Service	Tel. 114
Electrical Systems	Tel. 2 07 77
Entrance Building 1	Tel. 6 54 00



For urgent disruptions that occur **outside normal working hours**: Security Control Center, Telephone 2 22 22, during the normal working hours, Tel. 114 or e-mail: sloepunosann@ime@infirson.com.

In case of a breakdown of the telephone system the SCC can be contacted by mobile phone, Tel. 0170 8 54 20 78.

Campeon, March 2007

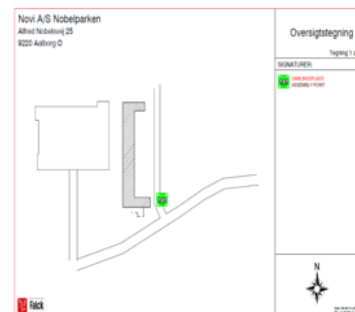
Evacuation Assembly Point Location

The assembly point is located outside the building, in the middle of the courtyard.



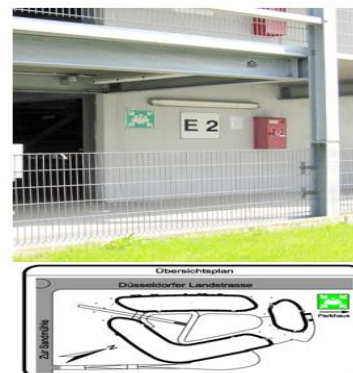
Evacuation Assembly Points

The assembly points are located between the buildings, in the middle of the garden area.

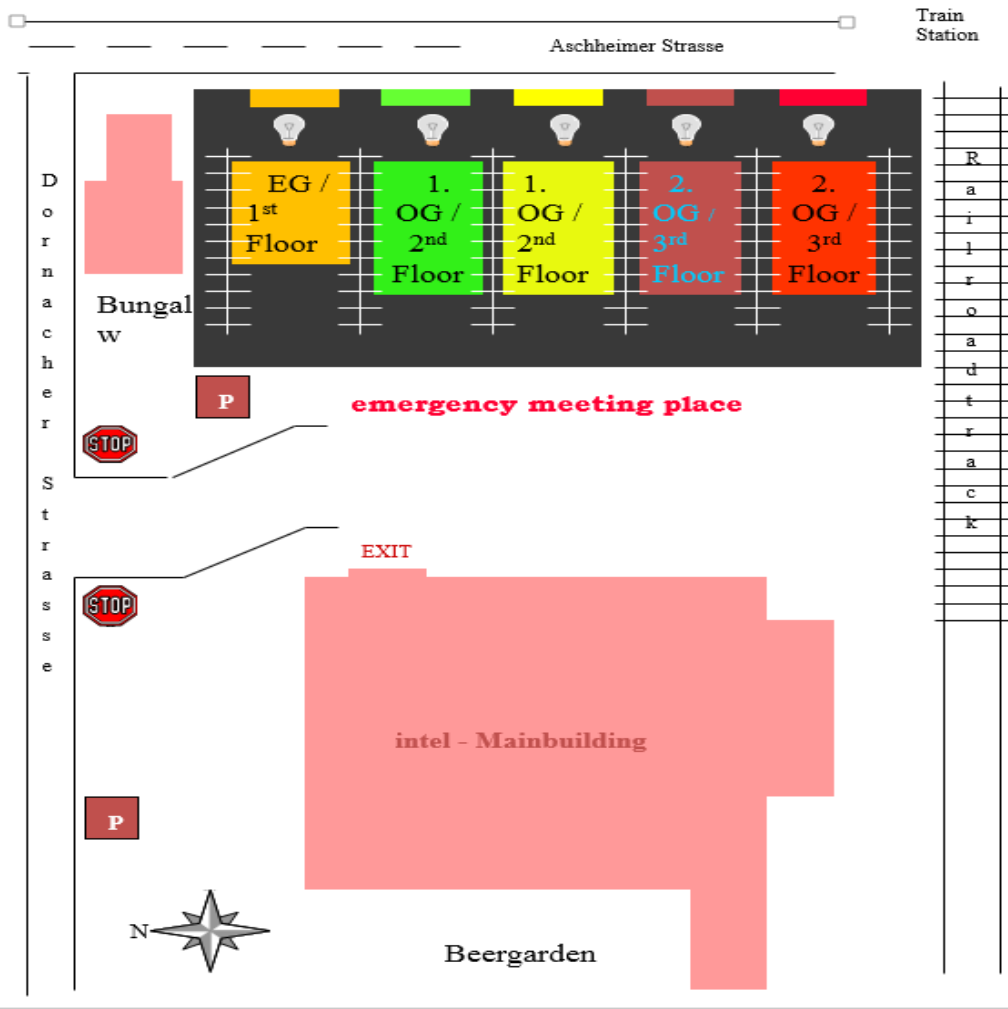


Evacuation Assembly Point

The assembly point is located at the parking deck.



Germany – Munich /Fejdkirchen

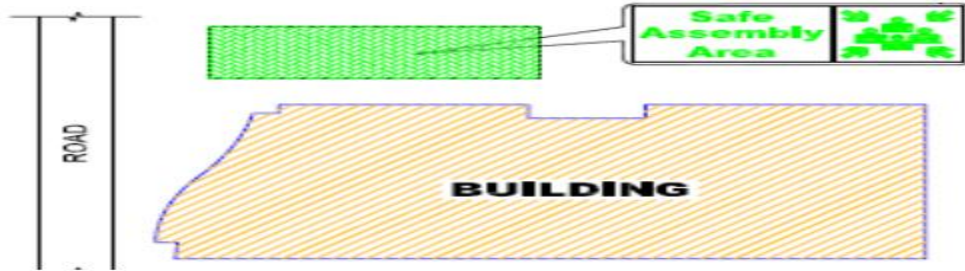


Asia

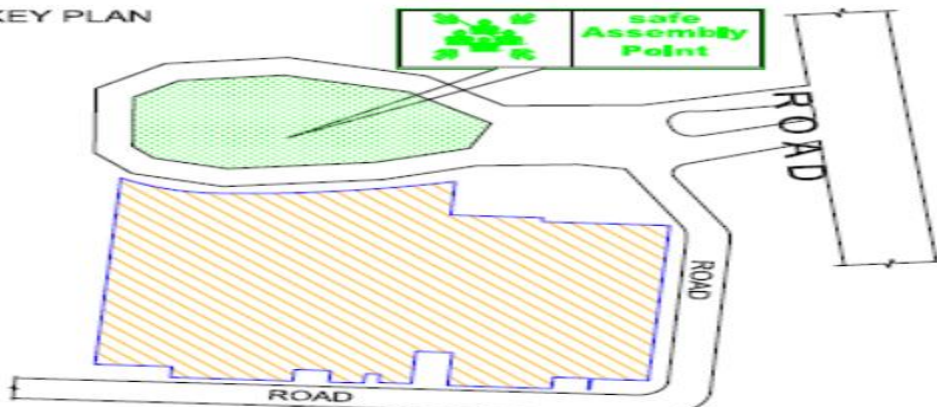
Bangalore - EMB & Ecospace

KEY PLAN

EMB Assembly Plan



KEY PLAN



ECO Space Assembly plan



Bangalore – SRR & BGA

KEY PLAN

Fire Assembly Point



SRR Assembly plan



BGA Assembly plan

ITP Safe Assembly Route Map*



INTEL OFFICES → SAFE ASSEMBLY AREA → SAFE ASSEMBLY AREA

* Tech Park premises and evacuation plan managed by ITP/Ascendas, not Intel

India – Delhi – Pune

Intel Delhi Office

Do's

- Stop work. Evacuate From the building through the nearest, safest exit
- Keep calm do not panic
- Walk briskly do not run
- Give consideration any handicapped persons, Pregnant women, Guest & Visitors
- Assemble at designated assembly area, (Refer to Evacuation map in this chart)
- Report any missing personnel in DRT

Don't's

- Do not go through the area of the emergency or incident.
- Do not go to the rest room.
- Do not stop to collect your personal belongings.
- Do not use the elevators.
- Do not re-enter the building until instructed by DRT

This drawing shows the nearest route to be taken for evacuation on floor in the event of an emergency like **FIRE**.

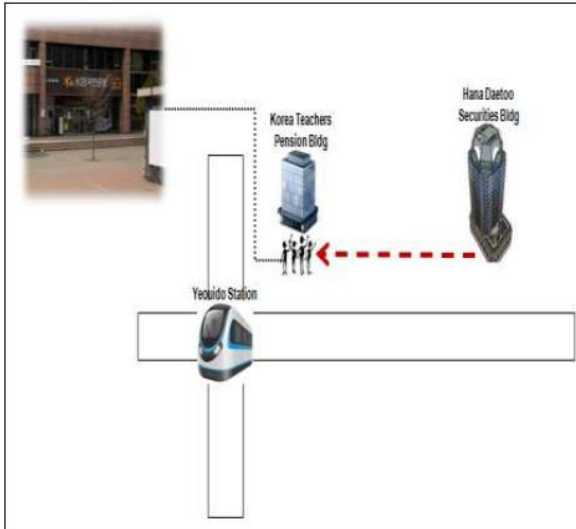
KEY PLAN

Intel Pune Office

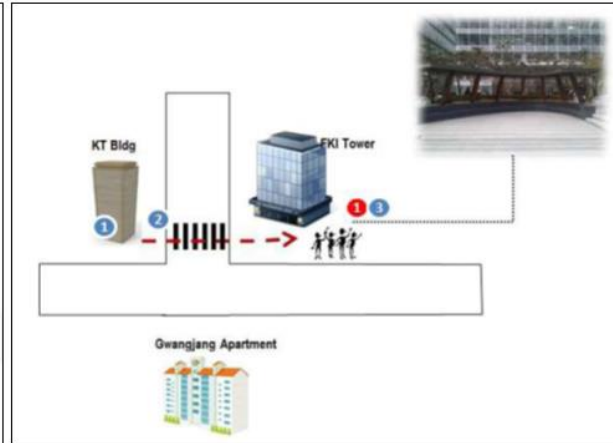
KEY PLAN

Korea – IKL Campus

IKL assembly point



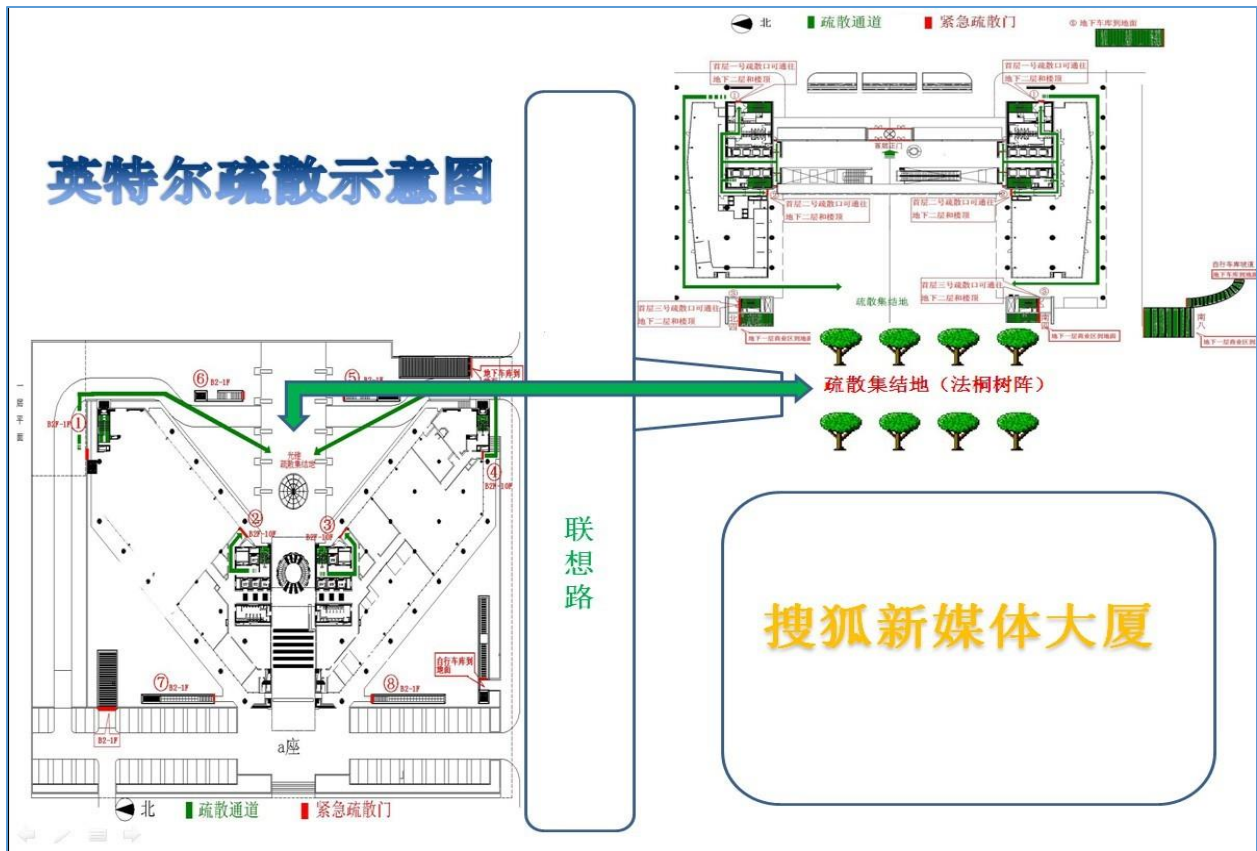
IKL2 assembly point



China – Beijing – GTC Site



China – Beijing – RYC Campus



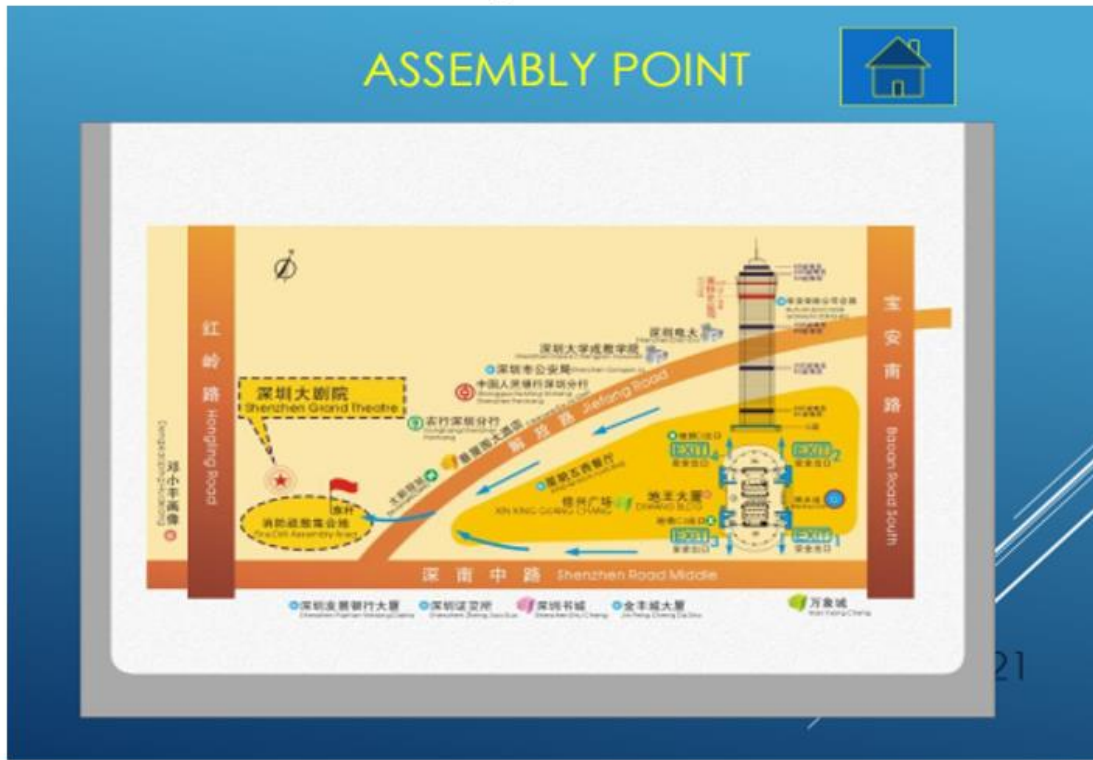
China – Shanghai – SHZ Campus

SHZ Evacuation Map



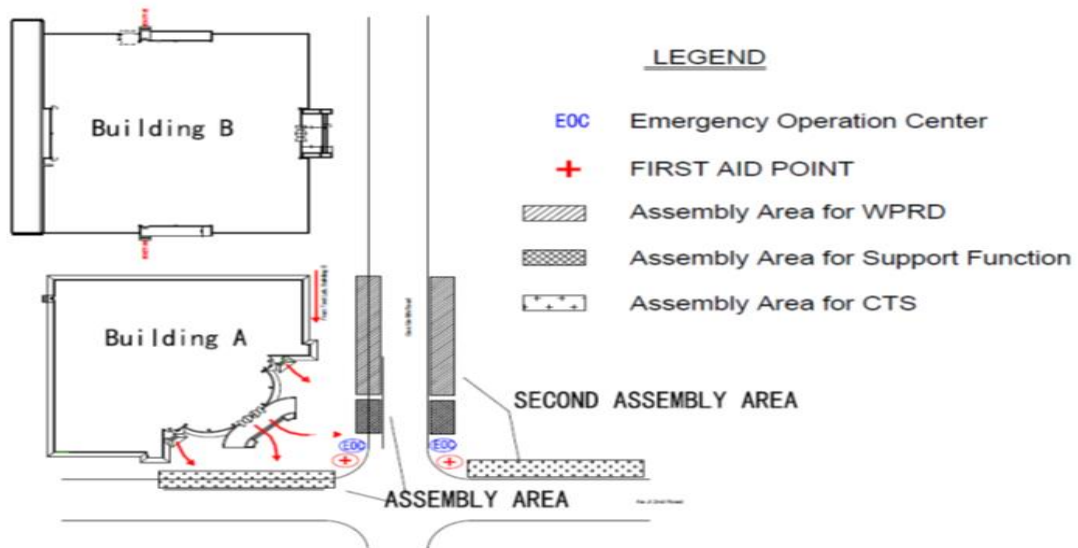
China – Shenzhen – DWG Campus

PRC Shenzhen – DWG Campus



China – Xian

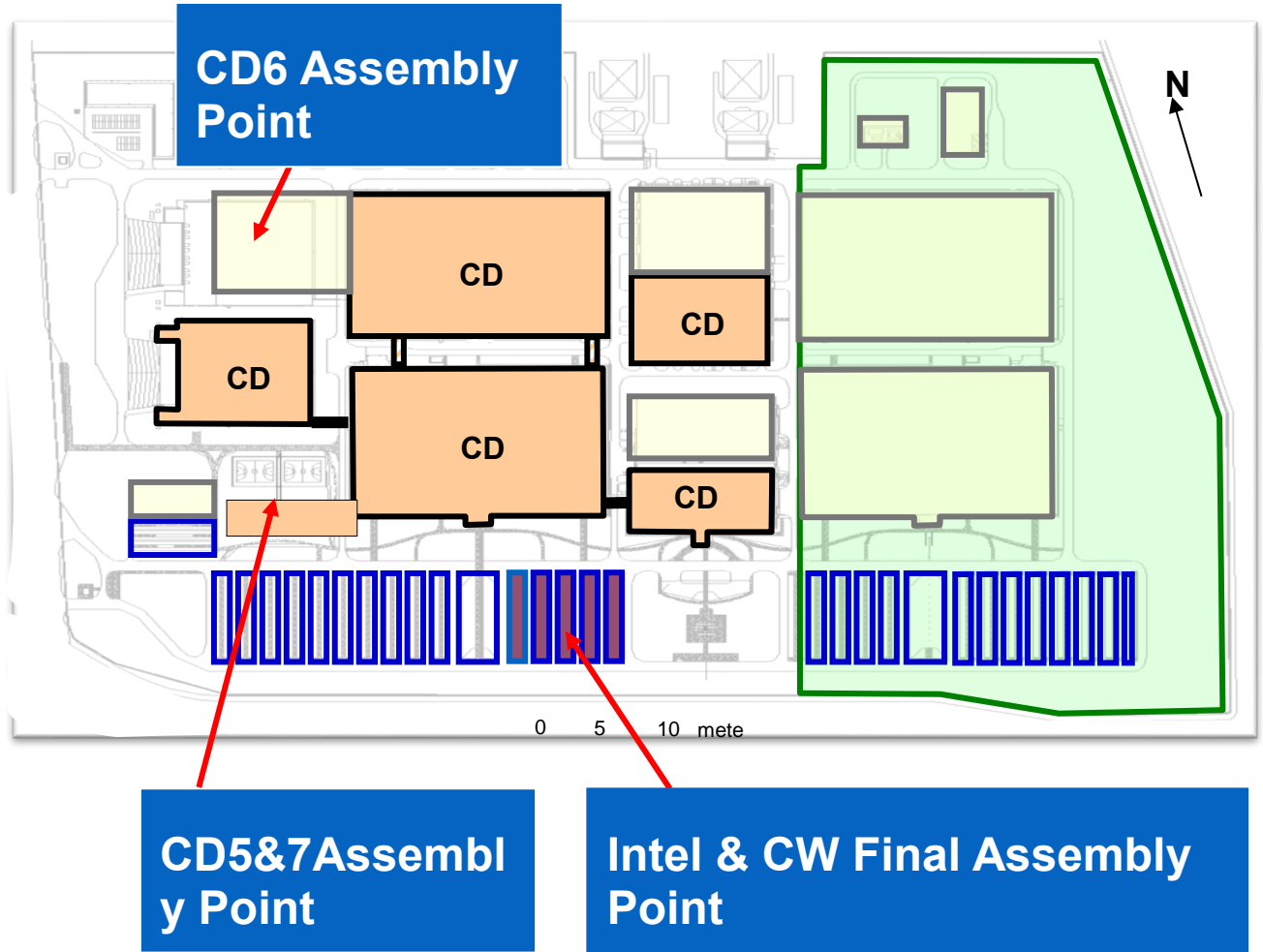
PRC Xian - XDZ site



China – Dalian

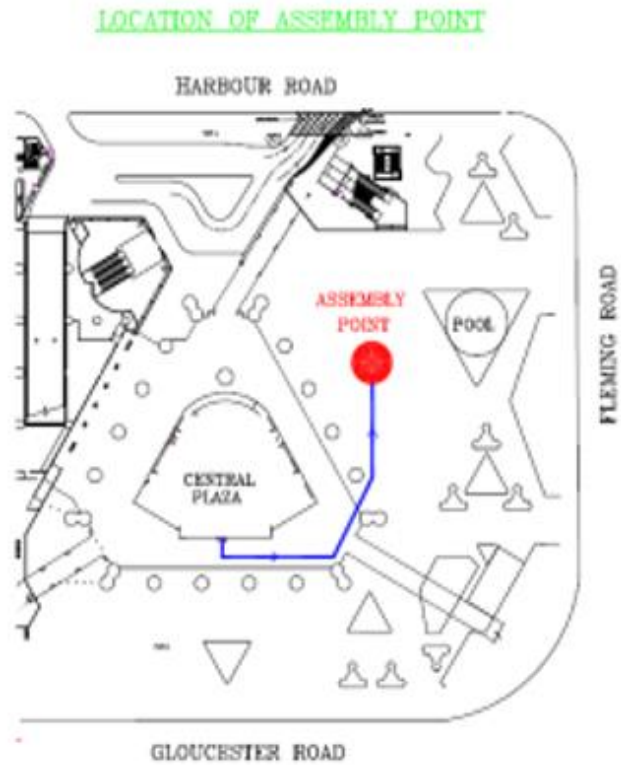


China – Chengdu



PRC – Hong Kong

PRC Hong Kong site



Taiwan



Japan

Japan TK site <Tokyo Office>

In case of large earthquakes, in order to secure the traffic path enabling quicker rescuer of injured people as well as recovery of the infrastructure and utilities, Tokyo Metropolitan Government requests people/tenants in the central area of Tokyo not to vacate from buildings immediately and keep staying inside for 3 days or until further notification by the government, unless any immediate life threatening events arise (ie. fire, building structure damage).

When evacuation is needed, ALL STAFFs are required to calmly vacate the building per the instruction by the landlord and proceed to the nearest assembly area as designated by the Tokyo government shown below.



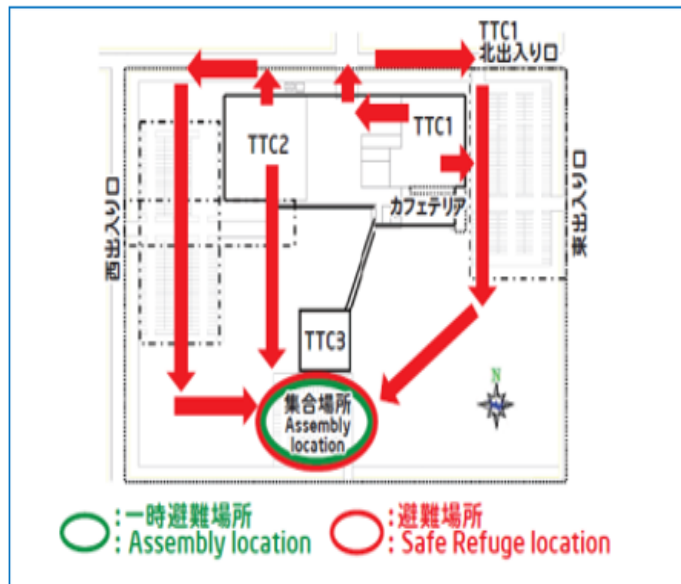
- Intel Office
- Refuge Area

(Link to Tokyo Metropolitan Government)

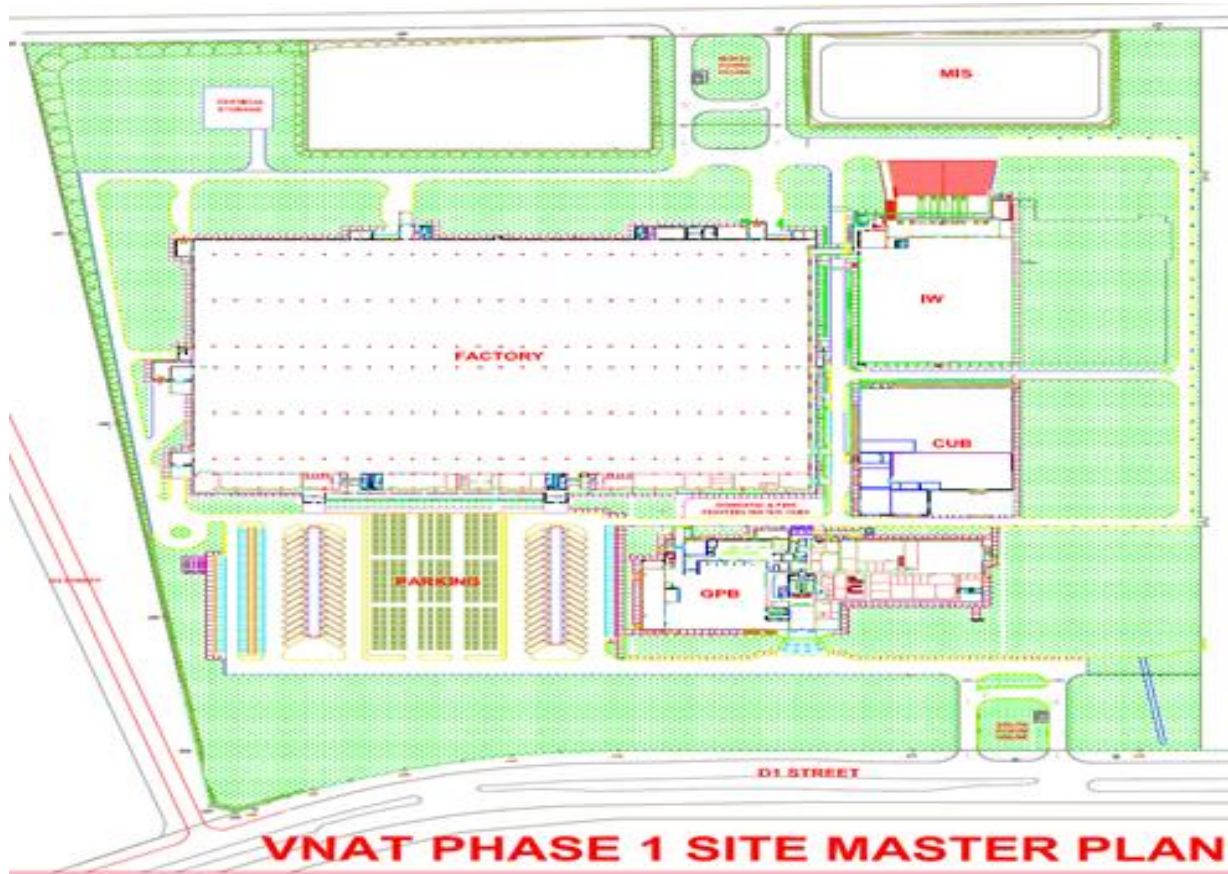
http://www.city.chiyoda.lg.jp/koho/kurashi/bosai/kitaku/document/s/taihib_ashotizu.pdf

Japan IJKK site <Tsukuba Campus>

Upon notification of evacuation by ERT, ALL STAFF are required to calmly vacate the buildings and assemble to await further instruction(s). Diagrams of the route to the assembly points are included below.



Vietnam

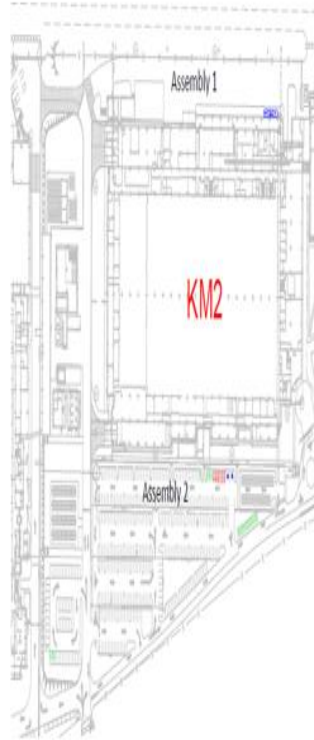


Malaysia – Kulim

KM1 Layout



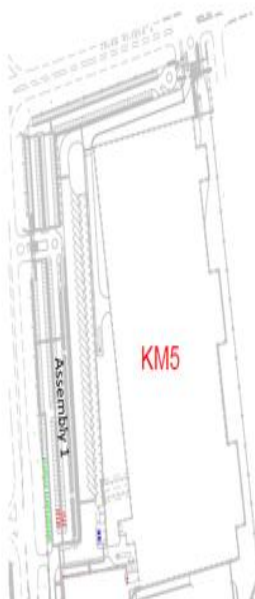
KM2 Layout



KM3 Layout



KM5 Layout



KM6 Layout

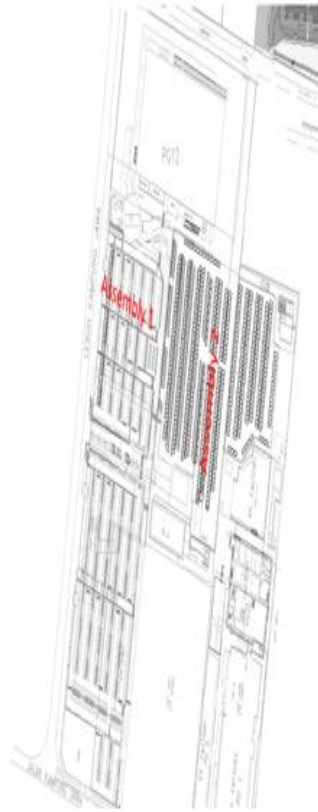


Contingent Workers Orientation

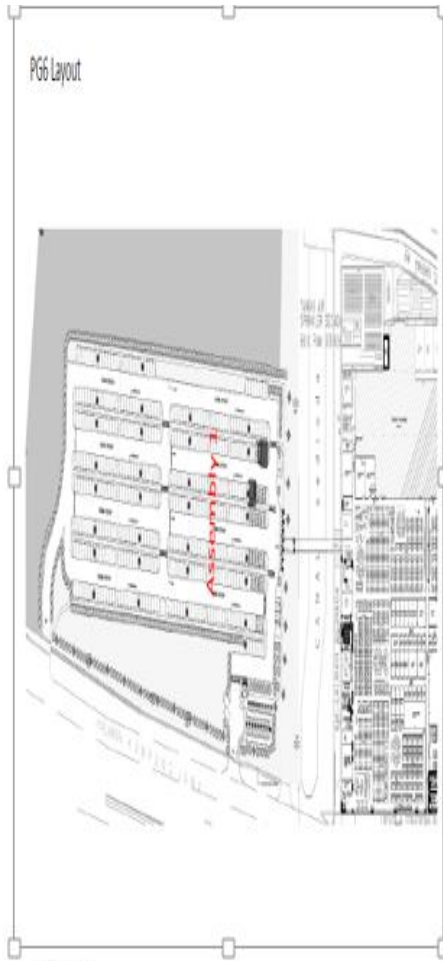


Malaysia – Penang

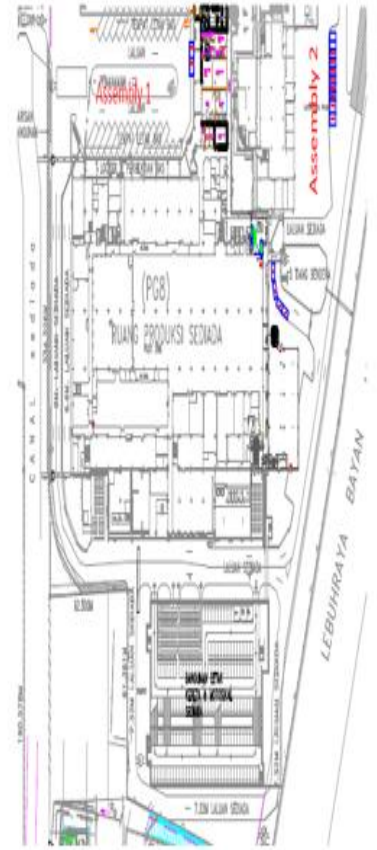
PG12, PG2 and PG2.1 Layout



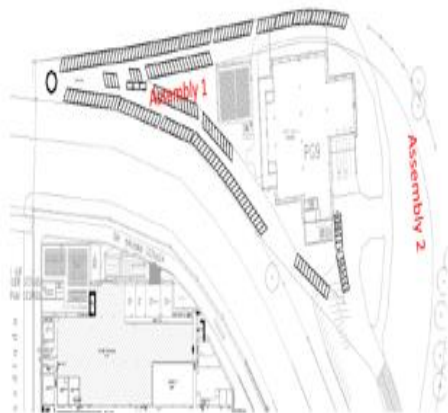
PG6 Layout



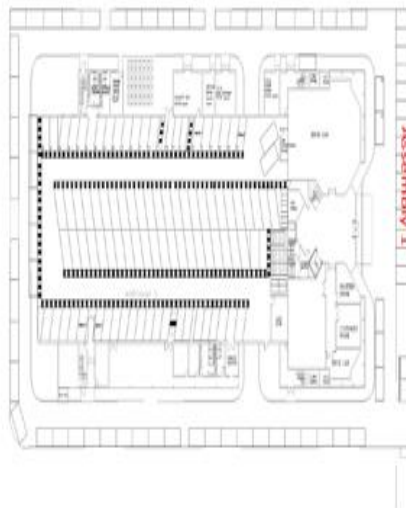
PG8 Layout



PG9 Layout



PG5.2 Layout



PG10 Layout

