

# **Intel<sup>®</sup> Ethernet Controller I210**

**Specification Update**

---

**Ethernet Networking Division (ND)**

*June 2018*

Revision 2.5  
332763-009



## Revision History

Revision	Date	Comments
2.5	June 20, 2018	<b>Miscellaneous Updates</b> <ul style="list-style-type: none"><li>Updated <a href="#">Table 1-1, "Markings"</a>.</li></ul>
2.4	January 8, 2018	<b>Miscellaneous Updates</b> <ul style="list-style-type: none"><li>Updated <a href="#">Table 1-1, "Markings"</a>.</li><li>Updated <a href="#">Table 1-2, "Device IDs"</a>.</li><li>Updated <a href="#">Table 1-3, "MM Numbers"</a>.</li><li>Added <a href="#">Figure 1-6, "I210 Production Top Marking Example (Automotive Industrial Temperature Fiber &lt;20 DPM)"</a>.</li><li>Removed documentation updates from <a href="#">Table 2-3</a> and <a href="#">Section 2.3</a>. All changes are incorporated in the latest revision of the <i>Intel® Ethernet Controller I210 Datasheet</i>.</li></ul>
2.3	May 9, 2017	<b>Miscellaneous Updates</b> <ul style="list-style-type: none"><li>Updated <a href="#">Table 1-3, "MM Numbers"</a>.</li></ul>
2.2	April 28, 2017	<b>Errata added or updated:</b> <ul style="list-style-type: none"><li><a href="#">36. Internal Clock Malfunction</a> (Added)</li></ul> <b>Miscellaneous Updates</b> <ul style="list-style-type: none"><li>Updated <a href="#">Table 1-1, "Markings"</a>.</li><li>Added <a href="#">Section 1.1.1, "Identifying the A3 Stepping"</a>.</li></ul>
2.1	December 1, 2016	<b>Errata added or updated:</b> <ul style="list-style-type: none"><li><a href="#">35. NC-SI Get Link Status Command Not Supported when Using SGMII</a> (Added)</li></ul>
2.0	July 15, 2016	<b>Errata added or updated:</b> <ul style="list-style-type: none"><li><a href="#">34. PCIe Throughput with Few Credits</a> (Added)</li></ul> <b>Miscellaneous Updates</b> <ul style="list-style-type: none"><li>Updated erroneous Device ID numbers in <a href="#">Table 1-2, "Device IDs"</a>.</li><li>Updated <a href="#">Table 1-2, "Device IDs"</a> to include footnote on Device ID 0x1538.</li></ul>
1.9	June 15, 2016	<b>Errata added or updated:</b> <ul style="list-style-type: none"><li><a href="#">33. PCIe Advanced Error Reporting: First Error Pointer</a> (Added)</li></ul> <b>Miscellaneous Updates</b> <ul style="list-style-type: none"><li>Updated <a href="#">Table 1-2, "Device IDs"</a>.</li><li>Updated <a href="#">Figure 1-3, "I210 Production Top Marking Example (Industrial Temperature Copper)"</a></li></ul>
1.8	August 24, 2015	<b>Errata added or updated:</b> <ul style="list-style-type: none"><li><a href="#">31. Certain Malformed IPv6 Extension Headers are Not Processed Correctly by the Device</a> (Added)</li><li><a href="#">32. NC-SI Output Signals Have Indeterminate Value After Power Up</a> (Added)</li></ul>
1.7	July 1, 2015	<b>Specification Clarifications added or updated:</b> <ul style="list-style-type: none"><li><a href="#">7. WGI210CS Automotive Industrial Temperature Fiber Schematic</a> (Added)</li></ul> <b>Miscellaneous Updates</b> <ul style="list-style-type: none"><li>Added automotive industrial temperature fiber product information (WGI210CS).</li></ul>
1.6	April 1, 2015	<b>Miscellaneous Updates</b> <ul style="list-style-type: none"><li>Revised <a href="#">Table 1-2, "Device IDs"</a>.</li></ul>



Revision	Date	Comments
1.5	February 10, 2015	<p><b>Specification Changes added or updated:</b></p> <ul style="list-style-type: none"> <li>6. Revision ID of A2 Stepping (Added)</li> </ul> <p><b>Errata added or updated:</b></p> <ul style="list-style-type: none"> <li>25. Slow System Clock (Updated)</li> <li>30. NC-SI Hardware Arbitration Hang</li> </ul> <p><b>Miscellaneous Updates</b></p> <ul style="list-style-type: none"> <li>Revised Table 1-2, "Device IDs".</li> </ul>
1.4	June 20, 2014	<p><b>Errata added or updated:</b></p> <ul style="list-style-type: none"> <li>29. SMBus: Interference with Get UDID Directed to Another Device (Added)</li> </ul>
1.3	December 20, 2013	<p><b>Specification Clarifications added or updated:</b></p> <ul style="list-style-type: none"> <li>5. No Match Firmware Proxying Configuration (Added)</li> <li>6. WUFC/PROXYFC NS Bits (Added)</li> </ul> <p><b>Specification Changes added or updated:</b></p> <ul style="list-style-type: none"> <li>3. PCIe Timing Parameter Update (Added)</li> <li>4. Static Device Off Using PCIe Hot Reset (Added)</li> <li>5. Multicast Listener Discovery (MLD) Protocol Offload is Not Supported (Added)</li> </ul> <p><b>Documentation Updates added or updated</b></p> <ul style="list-style-type: none"> <li>2. Ethernet Controller I210 Supported Flash Parts (Added)</li> </ul> <p><b>Errata added or updated:</b></p> <ul style="list-style-type: none"> <li>18. Failure to Establish PCIe Link After Power Up (Added)</li> <li>19. Proxy: Neighbor Solicitation with Multicast Target Address is Not Dropped (Added)</li> <li>20. Proxy: Missing Target Link-Layer Address in Neighbor Advertisement (Added)</li> <li>21. NC-SI: Hardware Arbitration Disable is Not Preserved Across Firmware Reset (Added)</li> <li>22. NC-SI: Count of Dropped Control Packets Could be Incorrect (Added)</li> <li>23. Transmit Halt After a D3-to-D0 Power State Transition (Added)</li> <li>24. Failure of Flash Update from Shadow RAM (Added)</li> <li>25. Slow System Clock (Added)</li> <li>26. NC-SI: SerDes Link Bit is Clear in Link Status Structure in 1000BASE-KX Link Mode (Added)</li> <li>27. Dynamic Device Off is Not Functional (Added)</li> <li>28. SMBus: Set Common Filters Command Does Not Set MNGONLY Bit in Shared MAC Address Mode (Added)</li> </ul> <p><b>Miscellaneous Updates</b></p> <ul style="list-style-type: none"> <li>Added Flash-less device IDs to Table 1-2, "Device IDs".</li> </ul>



Revision	Date	Comments
1.2	July 8, 2013	<b>Specification Clarifications added or updated:</b> <ul style="list-style-type: none"><li>4. Flash Update Integrity Firmware Enhancements (Added)</li></ul> <b>Specification Changes added or updated:</b> <ul style="list-style-type: none"><li>1. Proxy: Wake Up on Link Down/Up with MDNS Offload (Added)</li><li>2. No Firmware Reset via HICR in Secure Mode (Added)</li></ul> <b>Documentation Updates added or updated</b> <ul style="list-style-type: none"><li>1. Port Identification LED Blinking (Word 0x04) (Added)</li></ul> <b>Errata added or updated:</b> <ul style="list-style-type: none"><li>12. VPD Access During Shadow RAM Load to Flash Causes Firmware Reset and VPD Hang (Added)</li><li>13. NC-SI: Repeated Pause Time After Receiving XOFF (Added)</li><li>14. NC-SI: Set Link Command Failure in Low Power State in SerDes Modes (Added)</li><li>15. NC-SI: Maximum XOFF Renewal Interval Might be Exceeded (Added)</li><li>16. NC-SI: Set Link and Get Link Status Commands Not Supported in 1000BASE-KX Link Mode (Added)</li><li>17. Proxy: Invalid Neighbor Advertisement Packet with VLAN Tag and SNAP Header (Added)</li></ul>
1.1	January 31, 2013	<b>Errata added or updated:</b> <ul style="list-style-type: none"><li>8. Protocol Offload: Incorrect Response to MLDv2 Queries (Added)</li><li>9. Writes to the VPD RW Area are Not Reliable (Added)</li><li>10. NC-SI: Get NC-SI Pass-Through Statistics Response Might Contain Incorrect Packet Counts (Added)</li><li>11. MCTP Commands from SMBus are Dropped (Added)</li></ul>
1.0	October 26, 2012	Initial release (Intel Public)



# 1. Introduction

---

This document applies to the Intel® Ethernet Controller I210.

This document is an update to a published specification, the *Intel® Ethernet Controller I210 Datasheet*. It is intended for use by system manufacturers and software developers. All product documents are subject to frequent revision, and new order numbers will apply. New documents may be added. Be sure you have the latest information before finalizing your design.

## 1.1 Product Code and Device Identification

**Product Codes:** WGI210AT (Commercial Temperature Range)  
WGI210IT/WGI210IS (Industrial Temperature Range)  
WGI210CS (Automotive Industrial Temperature Range)  
WGI210CL (Automotive Industrial Temperature Range <20 DPM)

The following tables and drawings describe the various identifying markings on each device package:

**Table 1-1 Markings**

Device	Stepping	Top Marking	Description
I210	A2	WGI210AT	Production (Commercial Copper)
I210	A2	WGI210AT	Production (Industrial Temperature Copper) Designation "I" on the 4th line of the package indicates industrial temperature).
I210	A2/A3	WGI210AS	Production (Industrial Temperature Fiber) Designation "I" on the 4th line of the package indicates industrial temperature).
I210	A2/A3	WGI210CS	Production (Automotive Industrial Temperature Fiber) Designation "I" on the 4th line of the package indicates industrial temperature).
I210	A3	WGI210CL	Production (Automotive Industrial Temperature Fiber <20 DPM) Designation "I" on the 4th line of the package indicates industrial temperature).



**Table 1-2 Device IDs**

<b>I210 Device ID Code</b>	<b>Vendor ID</b>	<b>Device ID</b>	<b>Revision ID<sup>1</sup></b>
Not programmed/factory default	0x8086	0x1531	0x2/0x3
WGI210AT/WGI210IT (copper only)	0x8086	0x1533	0x2/0x3
WGI210IS (fiber, industrial temperature)	0x8086	0x1536	0x2/0x3
WGI210IS (1000BASE-KX/BX backplane)	0x8086	0x1537	0x2/0x3
WGI210IS (external SGMII, industrial temperature)	0x8086	0x1538	0x2/0x3
WGI210AT/WGI210IT (Flash-less copper only)	0x8086	0x157B	0x2/0x3
WGI210IS/WGI210CS (Flash-less 1000BASE-KX/BX backplane)	0x8086	0x157C	0x2/0x3
WGI210CS/WGI210CL (Flash-less SGMII)	0x8086	0x15F6	0x2/0x3

1. See Specification Change #6 for more details.

**Table 1-3 MM Numbers**

<b>Product</b>	<b>MM Number</b>	<b>Spec</b>	<b>Media</b>
WGI210AT - Production (Commercial Copper)	925131	SLJXQ	Tape and Reel
	925132	SLJXR	Tray
WGI210IT - Production (Copper and Industrial Temperature Range)	925133	SLJXS	Tape and Reel
	925138	SLJXT	Tray
WGI210IS - Production (Fiber and Industrial Temperature Range)	925142	SLJXW	Tape and Reel
	925143	SLJXX	Tray
WGI210CS - Production (Automotive, Fiber and Industrial Temperature Range)	937549	SLKKL	Tape and Reel
	937548	SLKKM	Tray
WGI210CL - Production (Automotive, Fiber and Industrial Temperature Range <20 DPM)	958497	SLM8U	Tape and Reel
	958496	SLM8V	Tray



### 1.1.1 Identifying the A3 Stepping

The A3 stepping only applies to the Fiber (IS/CS/CL) products. The A3 stepping can be identified by the Fab Lot Trace Code marking on the package or by the iNVM contents.

- Fab Lot Trace Codes starting with 1638 or greater are A3 devices.
- Bit 1 of INVM\_DATA[61] (0x12214) is 1b on A3 devices.

Figure 1-1 shows an example:

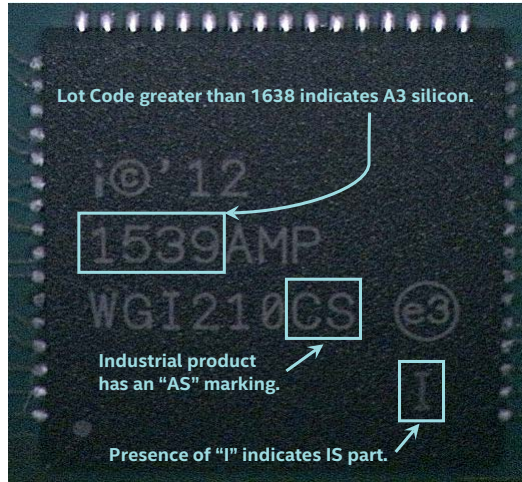


Figure 1-1 Explanation of Top Markings for A3 Stepping

## 1.2 Marking Diagrams



Figure 1-2 I210 Production Top Marking Example (Commercial Temperature Copper)



Figure 1-3 I210 Production Top Marking Example (Industrial Temperature Copper)



**Figure 1-4 I210 Production Top Marking Example (Industrial Temperature Fiber)**



**Figure 1-5 I210 Production Top Marking Example (Automotive Industrial Temperature Fiber)**



**Figure 1-6 I210 Production Top Marking Example (Automotive Industrial Temperature Fiber <20 DPM)**

**Notes:**

- Line 1: With no spaces, "i"©YY
- Line 2: Fab Lot Trace Code 0123456.78 (10-char max)
- Line 3: S-Spec Code and Pb-free mark (e3 or e1)
- Line 4: "I" in lower-right corner for industrial temperature rated devices





## 1.3 Nomenclature Used in This Document

This document uses specific terms, codes, and abbreviations to describe changes, errata, and/or clarifications that apply to silicon/steppings. See [Table 1-4](#) for a description.

**Table 1-4 Nomenclature**

Name	Description
Specification Clarifications	Greater detail or further highlights concerning a specification's impact to a complex design situation. These clarifications will be incorporated in the next release of the specifications.
Specification Changes	Modifications to the current published specifications. These changes will be incorporated in the next release of the specifications.
Errata	Design defects or errors. Errata may cause device behavior to deviate from published specifications. Hardware and software designed to be used with any given stepping must assume that all errata documented for that stepping are present on all devices.
Documentation Updates	Typos, errors, or omissions from the current published specifications. These changes will be incorporated in the next release of the specifications.
Doc	Document change or update that will be implemented.
Fixed	This erratum has been fixed.
Fix Planned	This erratum is intended to be fixed in a future stepping of the component.
NoFix	There are no plans to fix this erratum.
Fixed in NVM	This erratum has been fixed in NVM X.XX.
Fix Planned in NVM	This erratum is intended to be fixed in a future NVM version.
Eval	Plans to fix this erratum are under evaluation.
(No mark) or (Blank box)	This erratum is fixed in listed stepping or specification change does not apply to listed stepping.
DS	Datasheet
DG	Design Guide
SDM	Software Developer's Manual
EDS	External Data Specification
AP	Application Note



## 2. Hardware Clarifications, Changes, Updates and Errata

---

See Section 1.3 for an explanation of terms, codes, and abbreviations.

**Table 2-1 Summary of Specification Clarifications**

Specification Clarification	Status
1. PCIe Completion Timeout Mechanism Compliance	N/A
2. Padding on Transmitted SCTP Packets	N/A
3. Dynamic LED Modes Can Only be Used in an Active Low Configuration	N/A
4. Flash Update Integrity Firmware Enhancements	N/A
5. No Match Firmware Proxying Configuration	N/A
6. WUFC/PROXYFC NS Bits	N/A
7. WGI210CS Automotive Industrial Temperature Fiber Schematic	N/A

**Table 2-2 Summary of Specification Changes**

Specification Change	Status
1. Proxy: Wake Up on Link Down/Up with MDNS Offload	N/A
2. No Firmware Reset via HICR in Secure Mode	N/A
3. PCIe Timing Parameter Update	N/A
4. Static Device Off Using PCIe Hot Reset	N/A
5. Multicast Listener Discovery (MLD) Protocol Offload is Not Supported	N/A
6. Revision ID of A2 Stepping	N/A

**Table 2-3 Summary of Documentation Updates**

Documentation Update	Status
None.	N/A



**Table 2-4 Summary of Errata; Errata Include Steppings**

Erratum	Status
1. I <sup>2</sup> C Data Out Hold Time Violation	A2=Yes, A3=Yes; NoFix
2. NC-SI Hardware Arbitration Issues	A2=Yes, A3=Yes; NoFix
3. SGMII: Counters Incorrectly Increment on Collision	A2=Yes, A3=Yes; NoFix
4. BMC-Only Packets Not Counted as Host Sent/Received Packets	A2=Yes, A3=Yes; NoFix
5. Device Off Deadlock	A2=Yes, A3=Yes; NoFix
6. Marginal Low 10 Mb Amplitude	A2=Yes, A3=Yes; NoFix
7. Non-Monotonic Integrated SVR Ramp	A2=Yes, A3=Yes; NoFix
8. Protocol Offload: Incorrect Response to MLDv2 Queries	N/A
9. Writes to the VPD RW Area are Not Reliable	A2=Yes, A3=Yes; Fixed in NVM 3.16
10. NC-SI: Get NC-SI Pass-Through Statistics Response Might Contain Incorrect Packet Counts	A2=Yes, A3=Yes; NoFix
11. MCTP Commands from SMBus are Dropped	A2=Yes, A3=Yes; Fixed in NVM 3.16
12. VPD Access During Shadow RAM Load to Flash Causes Firmware Reset and VPD Hang	A2=Yes, A3=Yes; Fixed in NVM 3.20
13. NC-SI: Repeated Pause Time After Receiving XOFF	A2=Yes, A3=Yes; NoFix
14. NC-SI: Set Link Command Failure in Low Power State in SerDes Modes	A2=Yes, A3=Yes; Fixed in NVM 3.20
15. NC-SI: Maximum XOFF Renewal Interval Might be Exceeded	A2=Yes, A3=Yes; Fixed in NVM 3.20
16. NC-SI: Set Link and Get Link Status Commands Not Supported in 1000BASE-KX Link Mode	A2=Yes, A3=Yes; Fixed in NVM 3.20
17. Proxy: Invalid Neighbor Advertisement Packet with VLAN Tag and SNAP Header	A2=Yes, A3=Yes; Fixed in NVM 3.20
18. Failure to Establish PCIe Link After Power Up	A2=Yes, A3=Yes; NoFix
19. Proxy: Neighbor Solicitation with Multicast Target Address is Not Dropped	A2=Yes, A3=Yes; Fixed in NVM 3.25
20. Proxy: Missing Target Link-Layer Address in Neighbor Advertisement	A2=Yes, A3=Yes; Fixed in NVM 3.25
21. NC-SI: Hardware Arbitration Disable is Not Preserved Across Firmware Reset	A2=Yes, A3=Yes; Fixed in NVM 3.25
22. NC-SI: Count of Dropped Control Packets Could be Incorrect	A2=Yes, A3=Yes; Fixed in NVM 3.25
23. Transmit Halt After a D3-to-D0 Power State Transition	A2=Yes, A3=Yes; NoFix
24. Failure of Flash Update from Shadow RAM	A2=Yes, A3=Yes; Fixed in NVM 3.25
25. Slow System Clock	A2=Yes, A3=Yes; NoFix
26. NC-SI: SerDes Link Bit is Clear in Link Status Structure in 1000BASE-KX Link Mode	A2=Yes, A3=Yes; Fixed in NVM 3.25
27. Dynamic Device Off is Not Functional	A2=Yes, A3=Yes; NoFix
28. SMBus: Set Common Filters Command Does Not Set MNGONLY Bit in Shared MAC Address Mode	A2=Yes, A3=Yes; NoFix
29. SMBus: Interference with Get UDID Directed to Another Device	A2=Yes, A3=Yes; NoFix
30. NC-SI Hardware Arbitration Hang	A2=Yes, A3=Yes; NoFix



**Table 2-4 Summary of Errata; Errata Include Steppings (Continued)**

Erratum	Status
31. Certain Malformed IPv6 Extension Headers are Not Processed Correctly by the Device	A2=Yes, A3=Yes; NoFix
32. NC-SI Output Signals Have Indeterminate Value After Power Up	A2=Yes, A3=Yes; NoFix
33. PCIe Advanced Error Reporting: First Error Pointer	A2=Yes, A3=Yes; NoFix
34. PCIe Throughput with Few Credits	A2=Yes, A3=Yes; NoFix
35. NC-SI Get Link Status Command Not Supported when Using SGMII	A2=Yes, A3=Yes; NoFix
36. Internal Clock Malfunction	A2=Yes; NoFix. A3=No; Fixed

## 2.1 Specification Clarifications

### 1. PCIe Completion Timeout Mechanism Compliance

The I210 Completion Timeout Value[3:0] must be properly set by the system BIOS in the I210 PCIe Configuration Space Device Control 2 register (0xC8; W). Failure to do so can cause unexpected completion timeouts.

The I210 complies with the PCIe 2.0 specification for the completion timeout mechanism and programmable timeout values. The PCIe 2.0 specification provides programmable timeout ranges between 50  $\mu$ s to 64 s with a default time range of 50  $\mu$ s to 50 ms. The I210 defaults to a range of 16 ms to 32 ms.

#### Workaround:

The completion timeout value must be programmed correctly in PCIe configuration space (in Device Control 2 register); the value must be set above the expected maximum latency for completions in the system in which the I210 is installed. This ensures that the I210 receives the completions for the requests it sends out, avoiding a completion timeout scenario. Failure to properly set the completion timeout value can result in the device timing out prior to a completion returning.

The I210 can be programmed to resend a completion request after a completion timeout (the original completion request is assumed to be lost). But if the original completion arrives after a resend request, two completions may arrive for the same request; this can cause unpredictable behavior. Intel NVM images set the resend feature to off. Intel recommends that you do not change this setting.

### 2. Padding on Transmitted SCTP Packets

When using the I210 to offload the CRC calculation for transmitted SCTP packets, software should not add Ethernet padding bytes to short packets (less than 64 bytes). Instead, the TCTL.PSP bit should be set so that the I210 pads the packets after performing the CRC calculation.



### 3. Dynamic LED Modes Can Only be Used in an Active Low Configuration

In any of the dynamic LED modes (FILTER\_ACTIVITY, LINK/ACTIVITY, COLLISION, ACTIVITY, PAUSED), LED blinking should only be enabled if the LED signal is configured as an active low output.

### 4. Flash Update Integrity Firmware Enhancements

The I210 Flash Update integrity feature (Section 3.3.10 of the *Intel® Ethernet Controller I210 Datasheet*) ensures only Intel digitally signed updates can be applied to I210 products post manufacturing. This is achieved by a combination of hardware and firmware capabilities. NVM image release 3.20 includes firmware enhancements to improve the resilience of this feature.

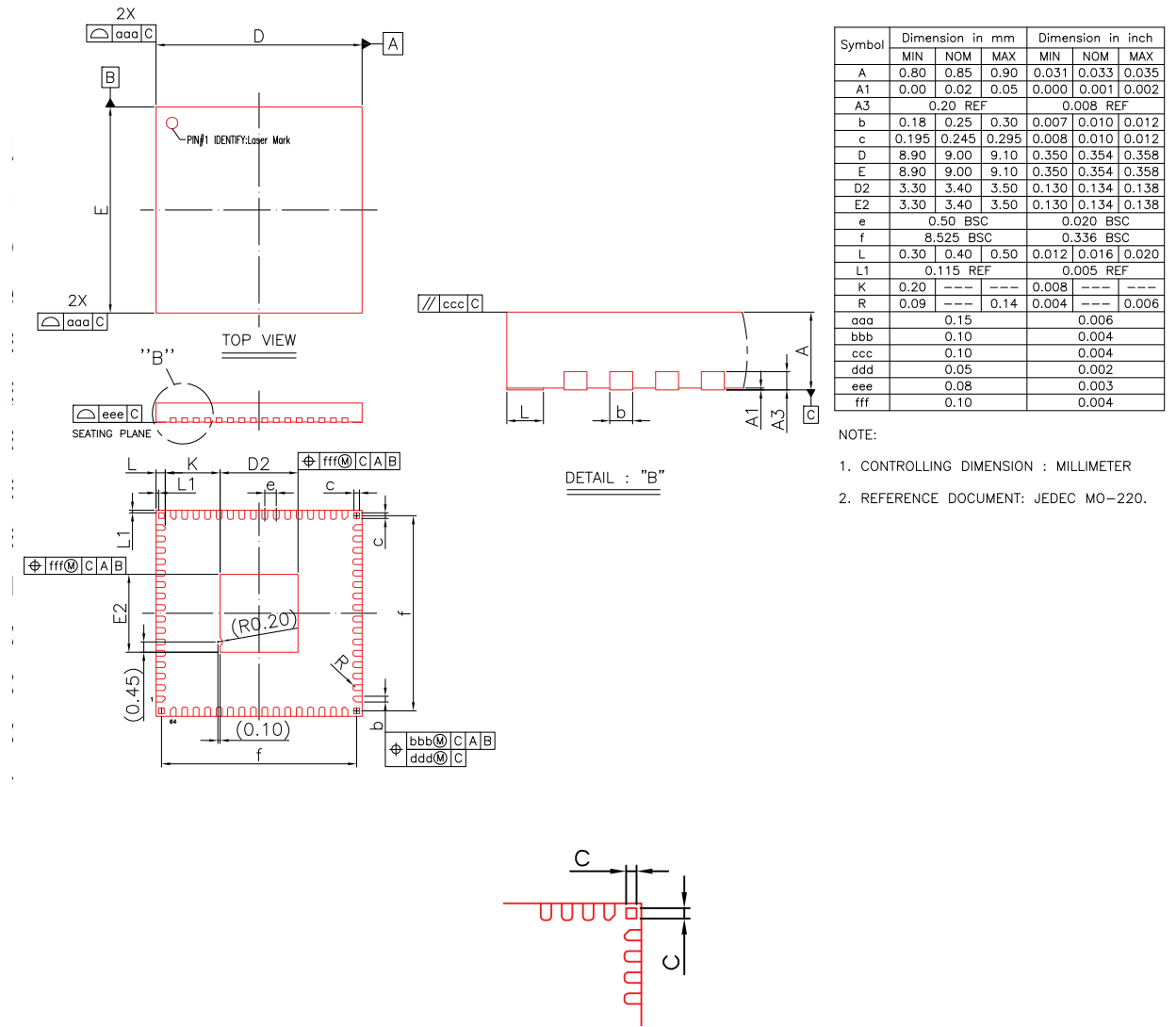
### 5. No Match Firmware Proxying Configuration

When the Set Firmware Proxying Configuration command is used and the No Match Data field is 0x01, any packet that passes the hardware proxy filters and cannot be processed by the firmware causes a wake up event. Care should be taken when using this setting to prevent the possibility of unintended wake-ups.

### 6. WUFC/PROXYFC NS Bits

The NS and NS Directed bits in both the WUFC and PROXYFC registers enable filters that pass Neighbor Solicitation packets. These filters do not check the ICMPv6 Type field, so they actually pass any ICMPv6 packet that meets all the other requirements. For example, ICMP Echo Request packets can pass these filters. Care should be exercised when setting these bits in WUFC to avoid unintentional system wake-ups.

## 7. WGI210CS Automotive Industrial Temperature Fiber Schematic



**Note:** The I210 CS has four no-connect corner pads for added solder joint reliability (as shown in Detail C).



## 2.2 Specification Changes

### 1. Proxy: Wake Up on Link Down/Up with MDNS Offload

As described in the *Intel® Ethernet Controller I210 Datasheet*, when mDNS proxy offload is active, the I210 wakes the system if the LAN link is lost and then re-established. Starting from NVM image release 3.20, the wake-up does not occur unless the link was down for at least 120 seconds. This prevents a spurious wake up triggered by the power state change from D0a to D3 or Dr.

### 2. No Firmware Reset via HICR in Secure Mode

When the I210 is operating in Secure Mode, the value of the Enable Firmware Reset NVM bit is ignored and firmware reset via the Host Interface Control Register (HICR) is disabled.

This change is implemented starting from NVM image release 3.20.

### 3. PCIe Timing Parameter Update

In Section 5.5.6 of the *Intel® Ethernet Controller I210 Datasheet*, the maximum value of timing parameter  $t_{ppg-clkint}$  (PCIe\* PE\_RST de-assertion to internal PLL lock) has been updated to 5 ms.

### 4. Static Device Off Using PCIe Hot Reset

Starting with NVM image release 3.25, the sequence for entering the static device off state can use a PCIe Hot Reset instead of an assertion of the PE\_RST\_N pin. This change removes the implicit requirement to have a dedicated signal connected to the PE\_RST\_N pin to toggle the pin without resetting the system.

In Section 4.4.4.1 of the *Intel® Ethernet Controller I210 Datasheet*, Step 3 should read, "BIOS issues a PCIe reset, either by asserting and de-asserting the PE\_RST\_N pin or by generating a PCIe Hot Reset."

**Notes:** The sequence for returning from the static device off state cannot use a PCIe Hot Reset since the PCIe link is down in the static device off state.

This change does not apply to flash-less applications.

### 5. Multicast Listener Discovery (MLD) Protocol Offload is Not Supported

IPv6 Multicast Listener Discovery (MLD) protocol offload is not supported.

The Set Firmware Proxying Configuration host interface command must contain 0 in the Enable MLD field.



## 6. Revision ID of A2 Stepping

The Revision ID of the A2 stepping is either 0x02 or 0x03. The value of the least-significant bit is indeterminate.

This affects the following fields that can be read from the I210:

- Step Rev ID field in the Mirrored Revision ID (MREVID) CSR.
- Revision ID register in the PCIe configuration space.
- Version field read by the IDCODE and USERCODE JTAG instructions.
- Silicon Revision ID field in the SMBus ARP UDID.
- Silicon Revision field returned by the Get Controller Information SMBus command.
- LS-Byte of the Firmware Version field returned by the Get Version ID NC-SI command.
- Rev ID field returned by the Get Controller Information NC-SI OEM command.

## 2.3 Documentation Updates

None.





## 2.4 Errata

### 1. I<sup>2</sup>C Data Out Hold Time Violation

#### Problem:

The I210 should provide a data out hold time of 50 ns on the SFP\_I2C\_Data pin. The actual hold time is about 16 ns.

#### Implication:

Timing specification violation. There have been no reports of failures resulting from this timing.

**Note:** The data input hold time required is zero, so the provided output hold time should be more than enough as long as the I<sup>2</sup>C CLK and DATA signals are reasonably matched on the board.

#### Workaround:

None.

Status: A2=Yes, A3=Yes; NoFix

### 2. NC-SI Hardware Arbitration Issues

#### Problem:

1. During normal operation, the I210 might get FLUSH commands with a smaller ID than the device ID. The I210 should pass on the received FLUSH, but it sends its own ID for ~2 μs and then passes on the lower ID FLUSHes.
2. The time from received-idle (while in a wait idle state) until the I210 sends IDLE on ARB\_OUT is 1.7 μs. The maximum time allowed (by the specification) is T9 = 640 ns.\
3. If a token timeout occurs while the I210 waits to send an XON packet, the internal state machine is reset and the XON is never sent.
4. Hardware arbitration timeout mechanism stops upon receiving pause packets from the MC. The timer stops counting until the pause indication drops.
5. The I210 sends XON opcode after the end of the Master Assignment process, even if the XOFF time (~300 ms) has expired.

If the I210 exits the congested mode during the Master Assignment process, it sends XON opcode at the end of the Master Assignment process even if the XOFF has expired.

The I210 does not consider the Master Assignment duration in the XOFF expiration time.

6. When the I210 enters congestion mode, it sends XOFF opcode and also makes a request for TOKEN to send an XOFF frame.

When the I210 enters congestion mode, it should send a XOFF frame if it has the TOKEN or XOFF opcode even if it has not received the TOKEN.

The I210 should not send both of them (opcode and frame) in any case.



**Implication:**

1. No implication in actual operation. Eventually, the lower IDs pass and arbitration succeeds.
2. The issue is not expected to cause problems because the timeout period is longer. Minor NC-SI compliance violation related to hardware arbitration.
3. The MC is released by the XOFF timer expiration. Minor NC-SI compliance violation related to hardware arbitration.
4. Longer than expected timeout (no specification violation).
5. No implication.
6. Slight delay in traffic coming from the MC but no platform implication.

**Workaround:**

None.

Status: A2=Yes, A3=Yes; NoFix

### 3. SGMII: Counters Incorrectly Increment on Collision

**Problem:**

In SGMII mode/half duplex, the following statistics counters incorrectly increment when a collision occurs:

Name	Definition	Location
RLEC	Length error counter	0x4040
CRCERRS	CRC error counter	0x4000
RFC	Receive frame counter	0x40A8

**Implication:**

Error counters might not be accurate.

**Workaround:**

None.

Status: A2=Yes, A3=Yes; NoFix

### 4. BMC-Only Packets Not Counted as Host Sent/Received Packets

**Problem:**

When OS2BMC is enabled, packets that do not reach the LAN are not counted as packets sent by the host (HGPTC register). Similarly, packets received from the MC are not counted as packets received by the host (RPTHC register).

**Implication:**

HGPTC and RPTHC counts are not accurate.



#### Workaround:

Add the O2BGPTC count to the HGPTC count to get the accurate number of packets sent by the host. Add the B2OGPRC count to the RPTHC count to get the accurate number of packets received by the host.

Status: A2=Yes, A3=Yes; NoFix

## 5. Device Off Deadlock

#### Problem:

If firmware resets (such as due to a parity error) after entering device off, the I210 does not detect the error and should enter device off but not shut the device down.

This happens only after a firmware reset.

#### Implication:

The chances of such an event happening while moving to device off are minimal.

#### Workaround:

None.

Status: A2=Yes, A3=Yes; NoFix

## 6. Marginal Low 10 Mb Amplitude

#### Problem:

1. 10BASE-T amplitude.

On some designs, the I210 might not meet the IEEE specification that states that the 10 Mb peak differential amplitude be between 2.2 V and 2.8 V for all data sequences.

2. 10BASE-T TP\_IDLE mask failures.

Some designs might have mask failures on the 10BASE-T TP\_IDLE with TPM load.

3. 10 BASE-Te (802.3az section 14.10) amplitude.

On some designs, the I210 might not meet the IEEE specification that states that when 10BASE-Te is enabled the 10 Mb peak differential amplitude be between 1.54 V and 1.96 V for all data sequences.

4. 10BASE-Te TP\_IDLE and link test pulse waveform mask failures.

Some designs might have mask failures on the 10BASE-Te TP\_IDLE and link test pulse with and without TPM load.

#### Implication:

No implication on system level performance or interoperability, conformance test only impact.



**Workaround:**

None.

Status: A2=Yes, A3=Yes; NoFix

## 7. Non-Monotonic Integrated SVR Ramp

**Problem:**

On some designs, both the 0.9 V and 1.5 V SVR show a non-monotonic start up.

**Implication:**

No functional impact for systems using an internal SVR, because the system is not vulnerable at the specific time that this non-monotonicity occurs.

**Workaround:**

None.

Status: A2=Yes, A3=Yes; NoFix

## 8. Protocol Offload: Incorrect Response to MLDv2 Queries

Superseded by Specification Change #5.

## 9. Writes to the VPD RW Area are Not Reliable

**Problem:**

VPD write accesses via the PCIe VPD Capability Structure are not always stored in the Flash.

**Implication:**

VPD writes are not reliable.

**Workaround:**

Do not use a RW area in the VPD structure. RO areas function correctly.

Status: A2=Yes, A3=Yes; Fixed in NVM 3.16

## 10. NC-SI: Get NC-SI Pass-Through Statistics Response Might Contain Incorrect Packet Counts

**Problem:**

The I210 maintains packet counters that are used in the Get NC-SI Pass-Through Statistics Response. These counters are cleared by any reset of the port, including the port reset generated by a PCIe reset.



#### Implication:

If a PCIe reset or port reset has occurred since the previous Get NC-SI Pass-Through Statistics Response, the packet count values could be lower than the actual packet counts because the counters were cleared.

#### Workaround:

The packet counts in the Get NC-SI Pass-Through Statistics Response can be used for debug purposes, but they should not be used for maintaining reliable statistics.

Status: A2=Yes, A3=Yes; NoFix

## 11. MCTP Commands from SMBus are Dropped

#### Problem:

The DMTF MCTP SMBus/I<sup>2</sup>C Transport Binding Specification requires that the LSB of the 4th byte of an MCTP over SMBus packet be 1b. Such a packet is dropped by the I210.

#### Implication:

MCTP over SMBus is not functional since all commands are dropped.

#### Workaround:

None.

Status: A2=Yes, A3=Yes; Fixed in NVM 3.16

## 12. VPD Access During Shadow RAM Load to Flash Causes Firmware Reset and VPD Hang

#### Problem:

If a VPD read or write access is performed while the firmware is in the process of loading the shadow RAM to the Flash, the firmware hangs. After the firmware watchdog timer expires, the firmware is reset and the VPD access is never completed.

#### Implication:

- Any manageability configuration from the Manageability Controller (MC) is lost due to the firmware reset.
- No more VPD read or write accesses can be performed until a PCIe reset occurs.

#### Workaround:

To prevent this scenario, check that `EEC.Shadow_modified` is 0b before performing a VPD read or write access. If less than 10 ms have passed since the previous VPD write access, it is OK to ignore this bit.

Status: A2=Yes, A3=Yes; Fixed in NVM 3.20



### 13. NC-SI: Repeated Pause Time After Receiving XOFF

#### Problem:

If the I210 receives an XOFF packet from the Manageability Controller (MC) and the next packet is an NC-SI command, the pause timer is restarted when the command is received.

#### Implication:

The response to the command is delayed until the pause timer expires, which could cause the MC to detect a timeout of the command.

#### Workaround:

The MC should send an XON packet to explicitly re-enable transmission from the I210 at the end of each congestion event and should not rely on expiration of the pause time in the XOFF packet.

Status: A2=Yes, A3=Yes; NoFix

### 14. NC-SI: Set Link Command Failure in Low Power State in SerDes Modes

#### Problem:

The I210 checks the Disable 1000 in non-D0a and Disable 100 in non-D0a bits of the PHPM register when determining if the speed(s) requested in a Set Link command are valid in the non-D0a states. If there is a conflict, the command fails with a Set Link Power Mode Conflict status.

This behavior is correct when using the internal PHY, but it is incorrect when using the other link modes.

#### Implication:

Set Link command is improperly rejected in SerDes modes in low-power states.

#### Workaround:

Clear the Disable 1000/100 in non-D0a NVM bits in non-copper modes.

Status: A2=Yes, A3=Yes; Fixed in NVM 3.20

### 15. NC-SI: Maximum XOFF Renewal Interval Might be Exceeded

#### Problem:

When NC-SI flow control is enabled and the MC-to-LAN buffer is congested, the I210 sends XOFF packets to the MC. The NC-SI Specification defines a Max XOFF Renewal Interval after which the XOFF condition must be removed. The I210 violates this specification by continuing to send XOFF packets as long as the congestion condition remains.

#### Implication:

Unusual congestion on the LAN interface could prevent the MC from communicating with the I210 for extended periods of time.



**Workaround:**

None.

Status: A2=Yes, A3=Yes; Fixed in NVM 3.20

## 16. NC-SI: Set Link and Get Link Status Commands Not Supported in 1000BASE-KX Link Mode

**Problem:**

When the CTRL\_EXT.LINK\_MODE is set to 01b (1000BASE-KX), the NC-SI Set Link and Get Link Status commands do not function correctly.

**Implication:**

The MC cannot properly control the link in 1000BASE-KX link mode.

**Workaround:**

None.

Status: A2=Yes, A3=Yes; Fixed in NVM 3.20

## 17. Proxy: Invalid Neighbor Advertisement Packet with VLAN Tag and SNAP Header

**Problem:**

If a Neighbor Solicitation packet is received with a VLAN tag and a SNAP header, the Neighbor Advertisement (NA) response also contains a VLAN tag and a SNAP header. However, the length field in the SNAP header of the NA packet returned by the I210 contains an incorrect value.

**Implication:**

Neighbor Solicitation proxy offload failure.

**Workaround:**

Do not use both VLAN tag and SNAP header in a Neighbor Solicitation packet.

Status: A2=Yes, A3=Yes; Fixed in NVM 3.20

I210 with Flash: Fixed in NVM image release 3.20.

I210 Flash-less: NoFix.

## 18. Failure to Establish PCIe Link After Power Up

**Problem:**

If the first de-assertion of PE\_RST\_N following power-up lasts less than 5 ms, the PCIe PLL might be calibrated incorrectly. When this occurs, the PLL does not lock and the PCIe logic remains in reset until the next power cycle.



**Implication:**

Failure to establish PCIe link.

**Workaround:**

Ensure that the duration of the first de-assertion of PE\_RST\_N after power-up is at least 5 ms.

A firmware workaround for this issue is included in NVM image release 3.25.

Status: A2=Yes, A3=Yes; NoFix

## 19. Proxy: Neighbor Solicitation with Multicast Target Address is Not Dropped

**Problem:**

According to Section 7.1.1 of RFC 4861, a Neighbor Solicitation packet with a multicast Target Address field should be silently dropped. The I210 accepts and responds to such a packet if the Target Address corresponds to the Solicited Node address provided by the host.

**Implication:**

No implication when the network is functioning correctly since this is not a valid packet. Reduced immunity to invalid inputs.

**Workaround:**

None.

Status: A2=Yes, A3=Yes; Fixed in NVM 3.25

I210 with Flash: Fixed in NVM image release 3.25.

I210 Flash-less: NoFix.

## 20. Proxy: Missing Target Link-Layer Address in Neighbor Advertisement

**Problem:**

If a Neighbor Solicitation packet does not include a source link-layer address option, the Neighbor Advertisement packet sent by the I210 in response does not include a target link-layer address option.

**Implication:**

If the link partner is performing Duplicate Address Detection, the Neighbor Advertisement packet generated by the I210 is dropped by the receiver since the target link-layer address is missing. As a result, there could be undetected duplicate addresses on the network.

**Workaround:**

None.

Status: A2=Yes, A3=Yes; Fixed in NVM 3.25

I210 with Flash: Fixed in NVM image release 3.25.

I210 Flash-less: NoFix.





## 21. NC-SI: Hardware Arbitration Disable is Not Preserved Across Firmware Reset

### Problem:

If NC-SI hardware arbitration is enabled from the NVM and it is disabled by the Select Package command, the hardware arbitration is enabled after a firmware reset.

### Implication:

NC-SI interface hang in this situation.

### Workaround:

Hardware arbitration should be disabled in the NVM if it is not required. The Select Package command should not be used to disable hardware arbitration.

Status: A2=Yes, A3=Yes; Fixed in NVM 3.25

## 22. NC-SI: Count of Dropped Control Packets Could be Incorrect

### Problem:

The NC-SI Control Packets Dropped counter in the Get NC-SI Statistics Response packet does not include control packets that were dropped due to a checksum error.

### Implication:

Misleading statistics when debugging.

### Workaround:

Add the value of the NC-SI Command Checksum Errors counter to the value of the NC-SI Control Packets Dropped counter when processing a Get NC-SI Statistics Response packet.

Status: A2=Yes, A3=Yes; Fixed in NVM 3.25

## 23. Transmit Halt After a D3-to-D0 Power State Transition

### Problem:

If EEE is active on a port's transmit path and `MANC.KEEP_PHY_LINK_UP` is 1b, data transmission from the MAC might halt following a D3-to-D0 power state transition.

### Implication:

Loss of communication over the LAN.

### Workaround:

Clear `EEER.TX_LPI_EN` to disable EEE in the transmit path when going to the D3 state if `KEEP_PHY_LINK_UP` is 1b.

This workaround is implemented in firmware in NVM image release 3.25.

Status: A2=Yes, A3=Yes; NoFix



## 24. Failure of Flash Update from Shadow RAM

### Problem:

If a Flash update from a shadow RAM procedure is performed while there is a management command or proxy packet pending, the Flash update fails and no further updates are performed. This failure is indicated by the value 0x05 in *FWSM.Ext\_Err\_Ind*.

During typical operation, this is a low-probability scenario since Flash updates from the shadow RAM are rarely performed and management commands and proxy packets also do not arrive at a high rate.

However, when the Restore MAC Address feature is enabled in the NVM, a Flash update from the shadow RAM is triggered after power-up. If the MC is also polling for the presence of the device at this time, this failure can occur with high probability.

### Implication:

Flash updates (by writing *EEC.FLUPD*) cannot be performed. In Non-Secure Mode the flash can instead be updated directly by software, using the *FLSWCTL* and *FLSWDATA* registers.

### Workaround:

If the Restore MAC Address feature is enabled in the NVM, the MC should wait 500 ms after power is applied to the I210 before sending commands to the I210.

If this failure is observed, as indicated by *FWSM.Ext\_Err\_Ind*, contact your Intel representative.

Status: A2=Yes, A3=Yes; Fixed in NVM 3.25

## 25. Slow System Clock

### Problem:

On some devices, the internal PLL circuit occasionally provides the wrong clock frequency after power up. The probability of failure is typically less than one failure per 1000 power cycles. When the failure occurs, the internal clock frequency is in the range of 1/10 to 1/20 of the correct frequency.

The failure can be observed on the *NVM\_SK* output, which will be running at a frequency below 5 MHz.

The failure can be detected from software by either of the following:

- Read internal PHY register 14 from page 252 as detailed in Step 3 of the workaround. The failing state is indicated by a value of 0xFF in bits 7:0.
- Read the *FRTIMER* register twice at a known time interval and see if the difference in the two values matches the interval.

### Implication:

No link can be established until the next power cycle.

### Workaround:

NVM image release 3.25 contains a workaround in firmware. If the APM Enable bit is set in NVM Word 0x24, the minimum time from power up until *PE\_RST* de-assertion (*Tm-per*) must be increased to 250 ms to ensure that the workaround is executed.

For flash-less applications, the following workaround can be performed in software.



**Note:** If a failure occurs, there is no link before the software runs, so APM WoL is not totally reliable in these applications.

1. Acquire the PHY semaphore.
2. Set MDICNFG.*Destination* to 0b.
3. Read PHY register 14 from page 252:
  - a. Write 0xFC to PHY register 22 (dec) using MDIC.
  - b. Wait at least 20  $\mu$ s.
  - c. Read from PHY register 14 (dec) using MDIC.
  - d. Wait at least 20  $\mu$ s.
  - e. Write 0b to PHY register 22 (dec) using MDIC.

If bits 7:0 of the PHY register read in sub-step (c)  $\neq$  0xFF, go to Step 15.

If the value is 0xFF after several (5) attempts to fix it (loops through Step 14), exit with a fatal error.

4. Set CTRL.*PHY\_RST* to 1b.
5. Set both CTRL\_EXT.*PHY\_Power\_Down\_Enable* and CTRL\_EXT.*SerDes\_Low\_Power\_Enable* to 1b.
6. Clear WUC.
7. Determine the value of auto-load word 0x0A. If this word exists in the iNVM, use that value. Otherwise, use the hardware default value, 0x202F.
8. Perform a bitwise OR of 0x0010 with the value from the Step 6 and write it as an auto-load of 0x0A using EEARBC.
9. Set PCIe configuration space register PMCSR bits 1:0 to 11b. (D3 state).
10. Wait 1 ms.
11. Set PCIe configuration space register PMCSR bits 1:0 to 00b. (D0 state).
12. Write the value from Step 6 as an auto-load of 0x0A using EEARBC.
13. Restore WUC to its original value, if necessary.
14. Go to Step 2.
15. Restore MDICNFG.*Destination* to its original value, if necessary.
16. Release the PHY semaphore

This workaround has been implemented in Intel software device driver 19.1.

Status: A2=Yes, A3=Yes; NoFix

## 26. NC-SI: SerDes Link Bit is Clear in Link Status Structure in 1000BASE-KX Link Mode

### Problem:

The response to a Get Link Status command in 1000BASE-KX link mode (CTRL\_EXT.*Link\_Mode* = 01b) has the SerDes Link bit set to 0b when it should be set to 1b. The same applies to a Link Status Change AEN.



**Implication:**

Incorrect indication of link mode. Other fields in the response might be interpreted incorrectly as a result.

**Workaround:**

The MC should use another method to determine the link mode.

Status: A2=Yes, A3=Yes; Fixed in NVM 3.25

## 27. Dynamic Device Off is Not Functional

**Problem:**

The I210 does not actually enter the Dynamic Device Off state even if all the necessary conditions are satisfied.

This does not apply to flash-less applications.

**Implication:**

Power consumption is higher than expected.

**Workaround:**

None.

Status: A2=Yes, A3=Yes; NoFix

## 28. SMBus: Set Common Filters Command Does Not Set MNGONLY Bit in Shared MAC Address Mode

**Problem:**

When executing a Set Common Filters command with the CBDM bit set to 0b (Shared MAC Address), the I210 uses the MDEF7 register to enable the IP address and/or port number filters specified in the command, but it does not set bit 7 of the MNGONLY register.

**Implication:**

Management traffic is duplicated and forwarded to the host in addition to the MC.

**Workaround:**

After sending the Set Common Filters command, the MC should send an Update Management Receive Filter Parameters command (Parameter Number 0xF) to set bit 7 of the MNGONLY register.

Status: A2=Yes, A3=Yes; NoFix



## 29. SMBus: Interference with Get UDID Directed to Another Device

### Problem:

If the I210 shares an SMBus connection with other slave devices, it interferes with Get UDID commands directed to the other devices.

### Implication:

Failure of Get UDID (directed) commands on a shared SMBus.

### Workaround:

Do not use Get UDID (directed) commands when the I210 is on a shared SMBus. The standard SMBus ARP flow does not require the Get UDID (directed) command, so this restriction should not interfere with the ability to perform SMBus ARP.

Status: A2=Yes, A3=Yes; NoFix

## 30. NC-SI Hardware Arbitration Hang

### Problem:

When using NC-SI hardware arbitration, the arbitration state machine of the device with the lowest Package ID could hang. This can only occur during PCIe reset following power-up of the device and only with the following NVM settings:

- *APM Enable* = 0b (Word 0x24)
- *EN\_PHY\_IN\_D3* = 0b (Common Firmware Parameters 2 word)

### Implication:

No transmission to the BMC from any of the devices.

### Workaround:

Set the *EN\_PHY\_IN\_D3* NVM bit (Bit 9 of Common Firmware Parameters 2) to 1b if NC-SI hardware arbitration is enabled.

Status: A2=Yes, A3=Yes; NoFix

## 31. Certain Malformed IPv6 Extension Headers are Not Processed Correctly by the Device

### Problem:

Certain malformed IPv6 extension headers are not processed correctly by the device.

### Implication:

If a packet containing such malformed IPv6 extension headers is received, the device might behave unpredictably.



#### Workaround:

Set bit 16 (*IPv6\_ExDis*) in the RFCTL register to disable the processing of received IPv6 extension headers.

**Note:** With this bit set, checksum calculation and RSS are disabled for IPv6 packets containing extension headers.

This workaround has been implemented in Intel drivers starting from Release 20.2.

Status: A2=Yes, A3=Yes; NoFix

## 32. NC-SI Output Signals Have Indeterminate Value After Power Up

#### Problem:

The NC-SI output signals have an indeterminate value after power up until the first rising edge of the NC-SI input clock. The signals could be tri-stated or driven high or low.

#### Implication:

Current leakage through the NC-SI I/O buffers.

#### Workaround:

If the NC-SI input clock is not driven after power up, connect the NC-SI clock input pin so that there is a rising edge after power has stabilized. For example, it could be connected via a resistor to a power-good indication on the board.

Status: A2=Yes, A3=Yes; NoFix

## 33. PCIe Advanced Error Reporting: First Error Pointer

#### Problem:

The First Error Pointer in the Advanced Error Capabilities and Control Register (PCIe register 0x118 bits 4:0) is a field that identifies the bit position of the first error reported in the Uncorrectable Error Status register. In the I210 implementation, the following bits of the Uncorrectable Status Register are not covered by this field:

- Bit 4 - Data Link Protocol Error Status.
- Bit 13 - Flow Control Protocol Error Status.
- Bit 14 - Completion Timeout Status.

#### Implication:

PCIe specification compliance issue.

#### Workaround:

None.

Status: A2=Yes, A3=Yes; NoFix



## 34. PCIe Throughput with Few Credits

### Problem:

A received Update FC DLLP is not always processed immediately. It sometimes stalls in the I210 until the next TLP or DLLP is received.

### Implication:

Reduced PCIe throughput when the number of credits provided by the PCIe port to which the I210 is connected is too small for continuous PCIe traffic.

### Workaround:

Connect the I210 to a PCIe port that provides enough PCIe credits for continuous PCIe traffic.

Status: A2=Yes, A3=Yes; NoFix

## 35. NC-SI Get Link Status Command Not Supported when Using SGMII

### Problem:

When `CTRL_EXT.LINK_MODE` is 10b (SGMII), the NC-SI Get Link Status command is not supported.

### Implication:

The I210 connecting via SGMII to an external PHY does not pass link status to the MC.

### Workaround:

Use keep-alive packets to determine connectivity.

Status: A2=Yes, A3=Yes; NoFix

## 36. Internal Clock Malfunction

### Problem:

Some I210 units fail to generate an internal clock after power-up. This has been observed more often when powering up at high temperature.

This failure only occurs on Fiber (SerDes) SKUs. This erratum does not apply to Copper SKUs.

### Implication:

The I210 cannot be enumerated on the PCIe bus and does not establish an Ethernet link.

### Workaround:

A power cycle at a lower temperature can restore functionality.

Status: A2=Yes; NoFix. A3=No; Fixed

Fixed in the A3 revision.



### 3. Software Clarifications

---

**Table 3-1 Summary of Software Clarifications**

Software Clarification	Status
1. While in TCP Segmentation Offload, Each Buffer is Limited to 64 KB	N/A
2. Serial Interfaces Programmed by Bit Banging	N/A

#### 1. While in TCP Segmentation Offload, Each Buffer is Limited to 64 KB

The I210 supports 256 KB TCP packets. However, each buffer is limited to 64 KB since the data length field in the transmit descriptor is only 16 bits. This restriction increases driver implementation complexity if the operating system passes down a scatter/gather element greater than 64 KB in length. This can be avoided by limiting the offload size to 64 KB.

Investigation has concluded that the increase in data transfer size does not provide any noticeable improvements in LAN performance. As a result, Intel network software drivers limit the data transfer size in all drivers to 64 KB.

Please note that Linux operating systems only support 64 KB data transfers.

For further details about how Intel network software drivers address this issue, refer to Technical Advisory TA-191.

#### 2. Serial Interfaces Programmed by Bit Banging

When bit-banging on a serial interface (such as SPI, I<sup>2</sup>C, or MDIO), it is often necessary to perform consecutive register writes with a minimum delay between them. However, simply inserting a software delay between the writes can be unreliable due to hardware delays on the CPU and PCIe interfaces. The delay at the final hardware interface might be less than intended if the first write is delayed by hardware more than the second write. To prevent such problems, a register read should be inserted between the first register write and the software delay, i.e. "write", "read", "software delay", "write".





***NOTE: This page intentionally left blank.***



## LEGAL

---

No license (express or implied, by estoppel or otherwise) to any intellectual property rights is granted by this document.

Intel disclaims all express and implied warranties, including without limitation, the implied warranties of merchantability, fitness for a particular purpose, and non-infringement, as well as any warranty arising from course of performance, course of dealing, or usage in trade.

This document contains information on products, services and/or processes in development. All information provided here is subject to change without notice. Contact your Intel representative to obtain the latest forecast, schedule, specifications and roadmaps.

The products and services described might contain defects or errors which might cause deviations from published specifications.

Copies of documents which have an order number and are referenced in this document might be obtained by calling 1-800-548-4725 or by visiting [www.intel.com/design/literature.htm](http://www.intel.com/design/literature.htm).

Intel and the Intel logo are trademarks of Intel Corporation in the U.S. and/or other countries.

\* Other names and brands might be claimed as the property of others.

© 2012-2018 Intel Corporation.