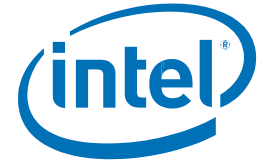




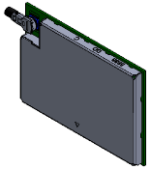
PRODUCT BRIEF

Intel® Wireless Gigabit 11000
 WiGig (802.11ad) Stand Alone Module
 Intel® Wireless Gigabit Antenna-M 10042R
 WiGig (802.11ad) Antenna Module



Intel® Wireless Gigabit 11000

Intel® Wireless Gigabit Antenna-M 10042R



Intel® Wireless Gigabit 11000



Intel® Wireless Gigabit Antenna-M 10042R


Product Description

The Intel® Wireless Gigabit 11000 delivers high-speed, 60 GHz WiGig (802.11ad) wireless docking connectivity for mobile client device (2 in 1, tablet, laptop) with up to 4.7 Gbps¹ of bidirectional throughput. It's available in a stand-alone soldered-down form factor optimized for thinner and lighter mobile device designs. Complemented with the Intel® Wireless Gigabit Sink-M 13100, it enables wire-equivalent user experience for wireless docking, peripherals access and device-to-device communications.

Intel® Wireless Gigabit 11000 supports innovative Intel-only features including Intel® Wireless Gigabit Docking.

Intel® Wireless Gigabit (802.11ad)	Benefits
Wireless Gigabit Docking (Client)	Allows wire-equivalent quality for up to two full HD displays, low-latency human interface (HID) devices, and multi-Gbps IO for on-desk productivity experience.
Wireless Access to Peripherals	Enables wire-free multi-Gbps connectivity for any USB 3.0 device, such as storage or HD camera that is WiGig-enabled or connected to a Wireless Gigabit dock station.
Device to Device	Allows multi-Gbps connectivity between devices.
WiGig Display Extension (WDE)	WiGig Wireless Display Extension, for visually-lossless, low latency, robust video and HD audio.
WiGig Serial Extension (WSE)	WiGig Wireless Serial Extension, for efficient, native USB 3.0 transfers including Bulk and Isochronous.
Client Dock Management	Dedicated, user-friendly Intel® Wireless Gigabit Dock Manager utility on the client to configure the dock settings (password protectable).
Dock Lock	Whitelist to allow OEM's control of client-dock connectivity capabilities.

Experience the Intel Difference

 Wire-Like Desktop Connectivity Intel® Wireless Gigabit Docking	Allows wire-equivalent quality for up to two full HD displays, low-latency human interface (HID) devices, and multi-Gbps IO for on-desk productivity experience. Enables seamless connectivity to desktop devices and the Intel® Wireless Gigabit Dock Manager to easily configure Intel® Wireless Gigabit Docking from the client.
---	---

Intel® Wireless Gigabit 11000 Module Specifications

Dimensions (H x W x D)	20.5x14.2mm ² x1.8mm (shield included)
Weight	2gr
Radio ON/OFF Control	Supported in both hardware and software
Connector interface	Soldered module has a proprietary land plan. Interface to Intel® Wireless Gigabit-Antenna M10041 Module using X-FL (single coax cable to carry power, IF and control)
LED Output	On/Off
Operating Temperature (Adapter Shield)	0° to +80°C
Humidity Non-Operating	50% to 90% RH non-condensing (at temperatures of 25°C to 35°C)
Operating Systems	Microsoft Windows 7*, Microsoft Windows 8.1* with connected standby, Microsoft Windows 10* with connected standby
IEEE WLAN Standard	802.11ad

Intel® Wireless Gigabit Antenna-M10042R Module Specifications

Dimensions (H x W x D)	7.5 mm x 24.5 mm x 2.1 mm
Weight	1g
Connector interface	X.FL
Operating Temperature (Adapter Shield)	0° to +80°C
Humidity Non-Operating	50% to 90% RH non-condensing (at temperatures of 25°C to 35°C)

Product Name Model Number Version

Intel® Wireless Gigabit 11000	11000D2W	802.11ad (Channels 1,2,3)
Intel® Wireless Gigabit Antenna M10042R	10042RRFW	802.11ad radio module



For more information on Intel® Wireless products, visit intel.com/wireless

¹ Based on the theoretical maximum bandwidth enabled by 802.11ad implementations. Actual wireless throughput and/or range will vary depending on your specific operating system, hardware and software configurations. Check with your PC manufacturer for details.

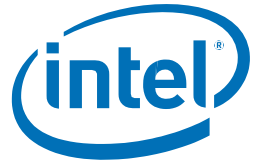
Software and workloads used in performance tests may have been optimized for performance only on Intel microprocessors. Performance tests, such as SYSmark and MobileMark, are measured using specific computer systems, components, software, operations and functions. Any change to any of those factors may cause the results to vary. You should consult other information and performance tests to assist you in fully evaluating your contemplated purchases, including the performance of that product when combined with other products.

No license, express or implied, by estoppel or otherwise, to any intellectual property rights is granted by this document. Except as provided in Intel's Terms and Conditions of Sale for such products, Intel assumes no liability whatsoever, and Intel disclaims any express or implied warranty, relating to sale and/or use of Intel products including without limitation, liability or warranties relating to fitness for a particular purpose, merchantability, or infringement of any patent, copyright or other intellectual property right. Intel products are not intended for use in medical, lifesaving, or life sustaining applications. Intel may make changes to specifications and product descriptions at any time, without notice. For the most current product information, please visit: <http://www.intel.com/wireless>

Intel, the Intel logo, Intel, and Intel Centrino are trademarks or registered trademarks of Intel Corporation or its subsidiaries in the United States and other countries.

*Other names and brands may be claimed as the property of others

Copyright © 2015 Intel Corporation. All rights reserved.



332927-001EN