

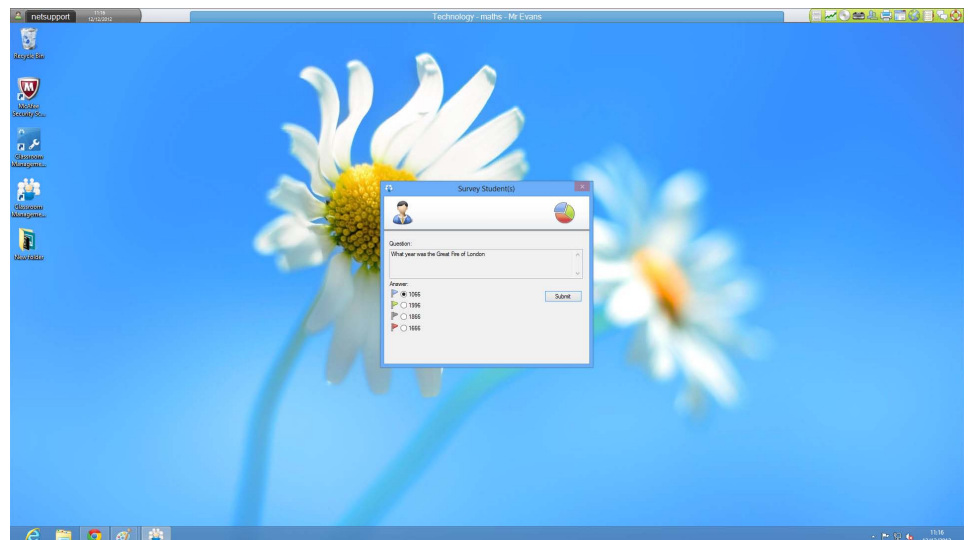
Classroom Management, Part of Intel® Education

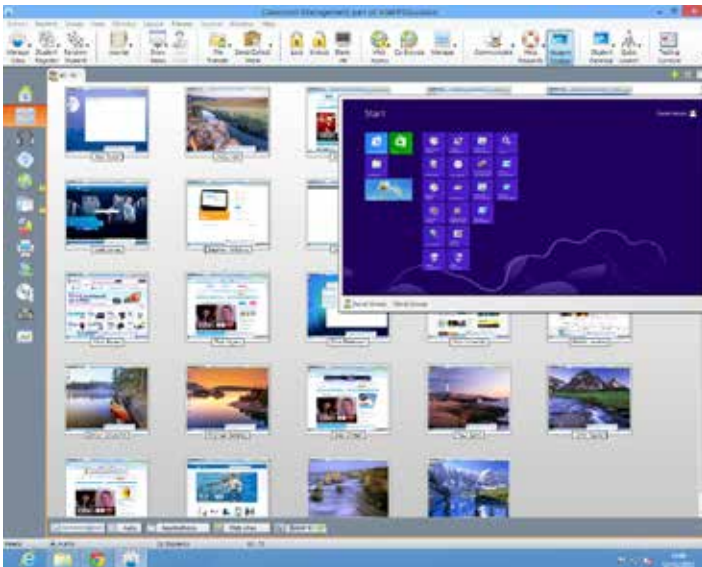
Classroom Management can enhance overall classroom productivity and support collaborative student work. The application provides teachers with tools to organize and send/receive lessons, administer assessments, and control student activity while eliminating distractions.



FEATURES/BENEFITS

- **Thumbnail monitoring:** Teachers can monitor student activity through thumbnail screen views of student PCs.
- **Assessments:** Educators can design and easily administer formative assessments, with data shown in real time.
- **File transfer:** Teachers can distribute files to students and collect homework electronically, automatically creating a file system on the teacher's PC that can be helpful in creating student portfolios and proof of performance for teacher evaluations.
- **Application blocking:** Teachers can shut down applications such as IM, Internet browsing, and social media to remove distractions.
- **Screen sharing:** Teachers can share their own screen with the whole class or choose a student's screen to share.
- **Chat:** Students and teachers can chat privately with each other during class.
- **Screen lock:** Teachers can blank student screens to direct the lesson and get students' attention.
- **Student journal:** Student Journal delivers a complete record of all activity within a lesson, aids homework and revision, provides a valuable resource for students who have missed a lesson, and gives teachers a full record of activity.





UNIT PLANS

Subject	Description	Use of Classroom Management
Language Arts	Students choose a novel highlighting a social or political issue and examine primary sources from the time in which it was written. Students analyze data to produce two digital products: a commentary written by a contemporary of the author and a modern discussion of the novel.	Teachers use Classroom Management to monitor student activity through thumbnail screen views, distribute samples and other reading materials to student machines, and create a formative assessment to evaluate student progress.
Science (K-2)	Working with older buddies, students become experts on eight species of bears. Students estimate and measure differences between themselves and bears, and compare two bear species' habitats, sizes, and needs. Students dig deeper to learn about one species and create a guide for children who visit the local zoo.	Teachers use Classroom Management to monitor individual and collaborative student activity. Teachers can shut down distracting web sites or social media, and give assessments.
Science (Grades 6-8)	Students research and analyze community recycling and waste management methods. Students develop a new recycling plan for the local community, propose recommendations to a committee, design a web page, and more.	Teachers use Classroom Management to manage class time by assessing student progress with thumbnail views in the teacher's console. Teachers can share student screens to show the class examples of good work.