

Manage Your Remote Work Devices from the Cloud

intel

The Intel vPro® platform: Enabling modern manageability from the cloud

By 2025, an estimated 70 percent of the workforce will be working remotely at least five days per month.¹

This new hybrid onsite/remote workplace brings fresh challenges to IT.

Some IT departments manage more than 150,000 client devices worldwide.

This also means more attack surfaces for potential data breaches.

When remote work increased in 2020, the FBI received 4x the cybersecurity complaints each day as it did before the pandemic.²

Intel vPro technologies work together to help IT patch, manage, secure, and repair remote devices

even when devices are powered off or the operating system isn't responsive.³



Intel® Active Management Technology (Intel® AMT):

Hardware for out-of-band management



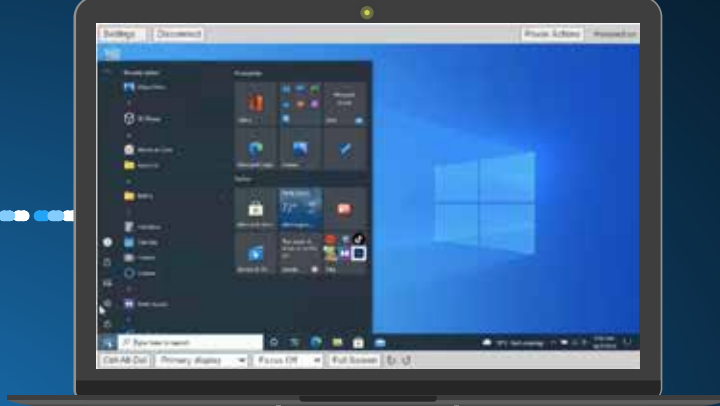
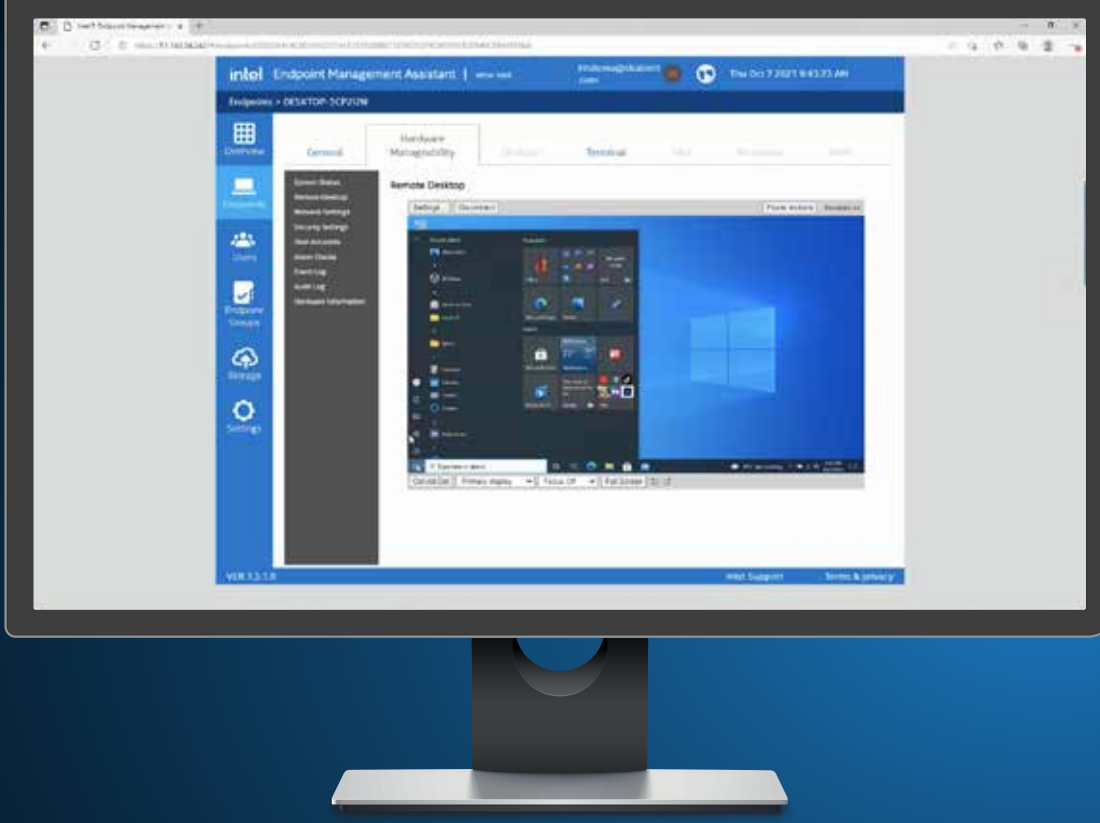
Intel® Endpoint Management Assistant (Intel® EMA):

Software for cloud-based functionality

What this means for IT

Manage devices proactively

Wake devices and run routine software updates, including regular security patches, remotely during off hours.

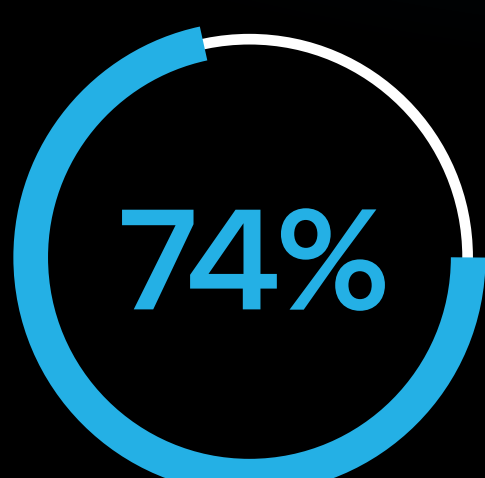


Respond to unplanned events

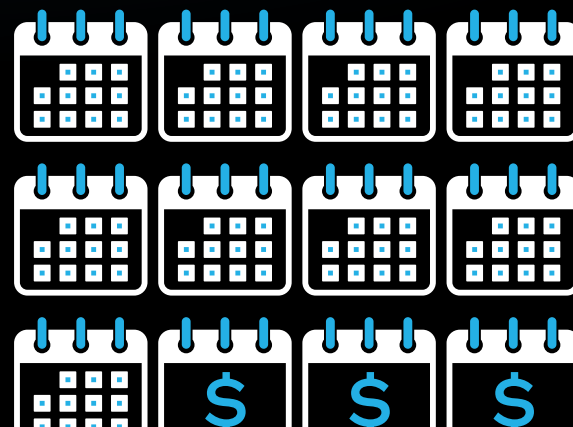
Troubleshoot with keyboard/video/mouse (KVM) capabilities to view a system as if actually deskside, and remotely reimaged and reboot.

What this means for business

Save time and costs



of IT decision makers (ITDMs) surveyed found that laptop- and desktop-management costs were reduced with the Intel vPro platform.⁴



The Intel vPro platform could deliver payback in an estimated 9 months for an organization of 100,000 PCs.⁵

Learn more about how the Intel vPro platform is changing what IT can do for remote work:

Read the e-book today.

intel

¹Rani Molla. "How remote work is quietly remaking our lives." *Recode by Vox*. October 2019. <https://recode.2019/10/9/20885699/remote-work-from-an-where-change-coworking-office-real-estate>.

²The Hill. "FBI sees spike in cyber crime reports during coronavirus pandemic." <https://thehill.com/policy/cybersecurity/493198-fbi-sees-spike-in-cyber-crime-reports-during-coronavirus-pandemic>.

³Intel AMT requires a wired or wireless network connection to provide remote management. Wireless support requires Intel AMT to be preconfigured with Wi-Fi profiles or to be configured to duplicate Wi-Fi profiles from the OS when it connects to a new Wi-Fi network. Intel AMT cannot join new Wi-Fi networks without the OS first connecting to them. Results may vary by use, configuration, and other factors.

⁴Survey of 416 ITDMs at enterprises across the world using Intel vPro platform-based systems, including in the United States, UK, Germany, Japan, and China. 74 percent of respondents marked "agree" or "strongly agree" to the statement, "Laptop and desktop management costs have been reduced." Source: Forrester Consulting. "The Total Economic Impact of the Intel vPro Platform." Commissioned by Intel. January 2021. <https://tools.totaleconomicimpact.com/go/intel/vproplatform/>.

⁵Survey of 416 ITDMs at enterprises across the world using Intel vPro platform-based systems, including in the United States, UK, Germany, Japan, and China. For the purposes of this data, there are two assumptions being made to simplify analysis and explanation: 1) The composite organization assumes 100 percent laptop use—this helps simplify having to break out secondary inputs of device type counts and costs, which readers can do for their own business-case analyses; 2) The composite organization assumes no growth to avoid attributing organic growth with value gains attributable to Intel vPro technology, or complex explanation to subtract those gains from the return on investment (ROI) that is specific to the Intel vPro platform investment. Source: Forrester Consulting. "The Total Economic Impact of the Intel vPro Platform." Commissioned by Intel. January 2021. <https://tools.totaleconomicimpact.com/go/intel/vproplatform/>.

Intel technologies may require enabled hardware, software or service activation.

No product or component can be absolutely secure.

Your costs and results may vary.

Intel does not control or audit third-party data. You should consult other sources to evaluate accuracy.

© Intel Corporation. Intel, the Intel logo, and other Intel marks are trademarks of Intel Corporation or its subsidiaries. Other names and brands may be claimed as the property of others.