



# INTEL UNITE<sup>®</sup> SOLUTION - QUICK START GUIDE

## Using the Intel Unite<sup>®</sup> Solution



## Launch, Connect and Present with the Intel Unite Solution in 3 steps

**1**

### Launch

**2**

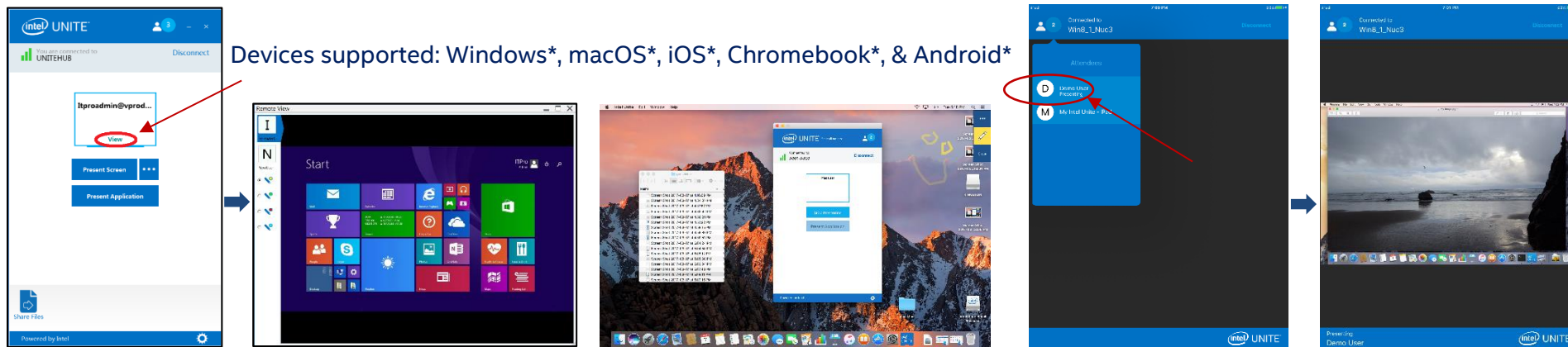
### Enter PIN

**3**

### Present

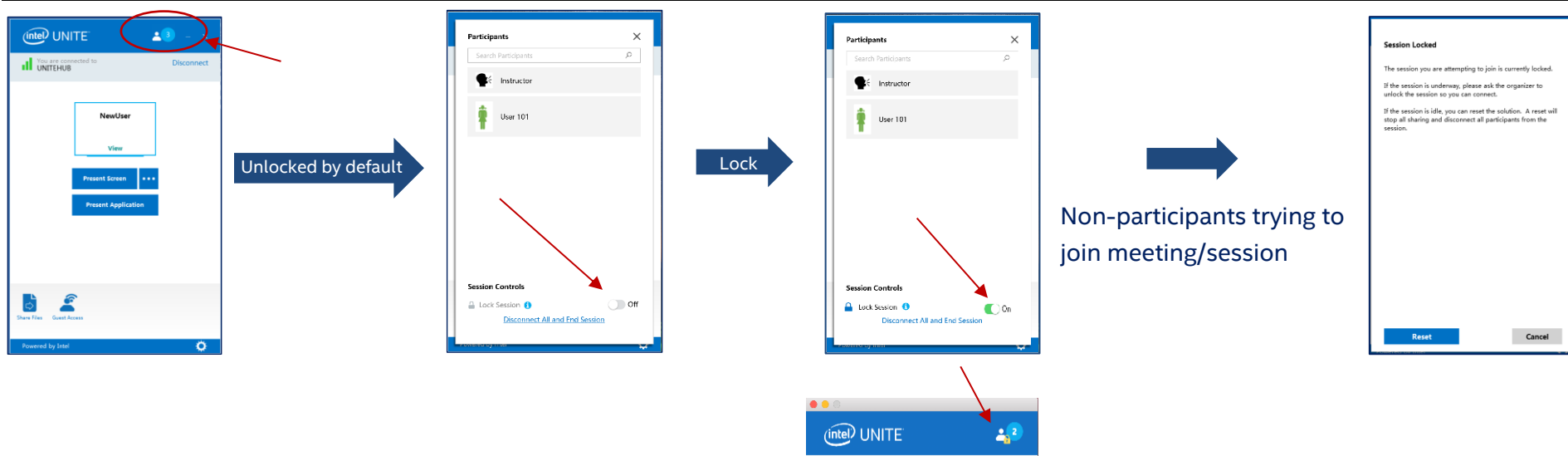
- Your Screen
- An Application
- Virtual Display (If applicable)

## View Presentation on your Device

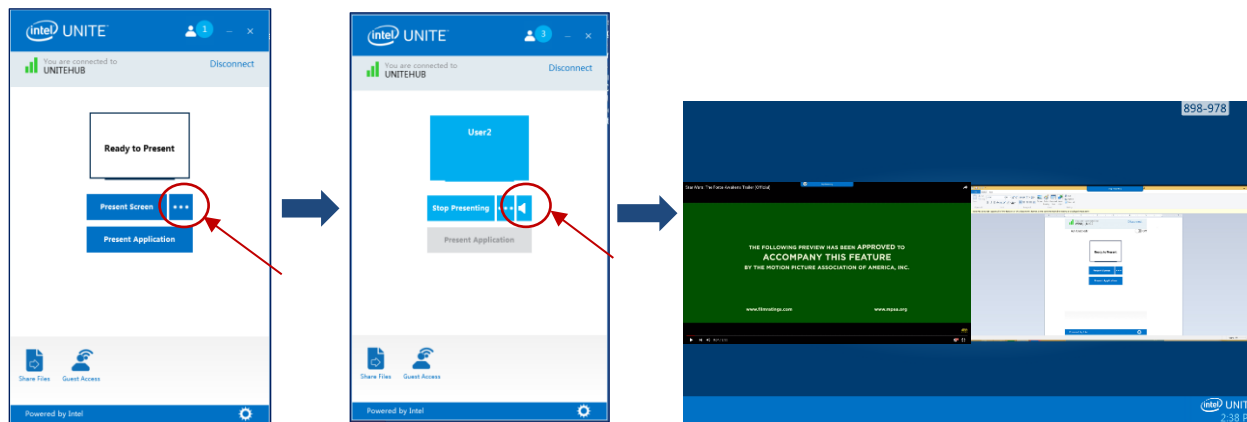


Not all devices are supported on the Small Business version of the Intel Unite® app

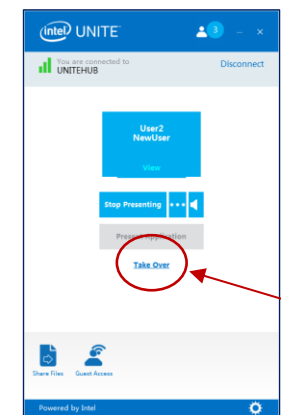
## Lock a Meeting



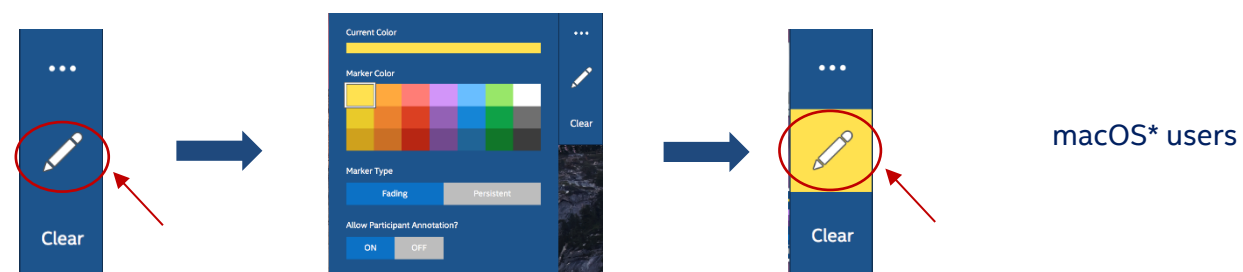
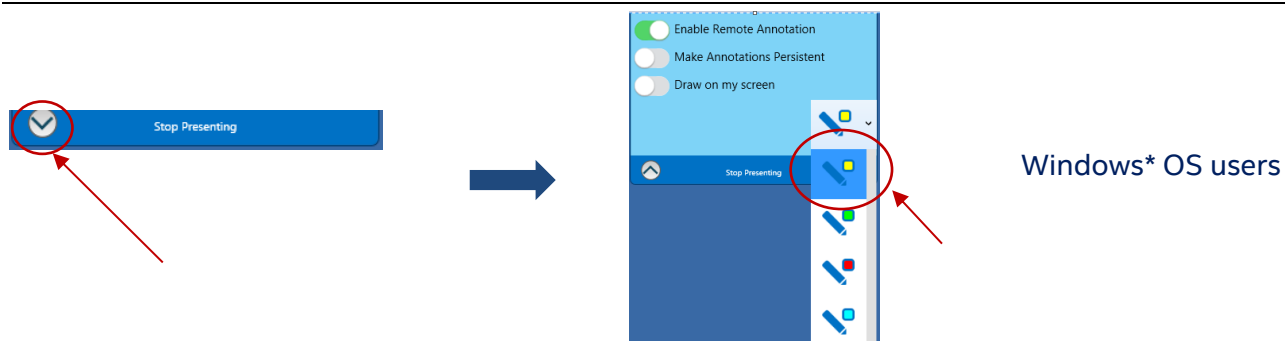
## Play a Video with Audio Support



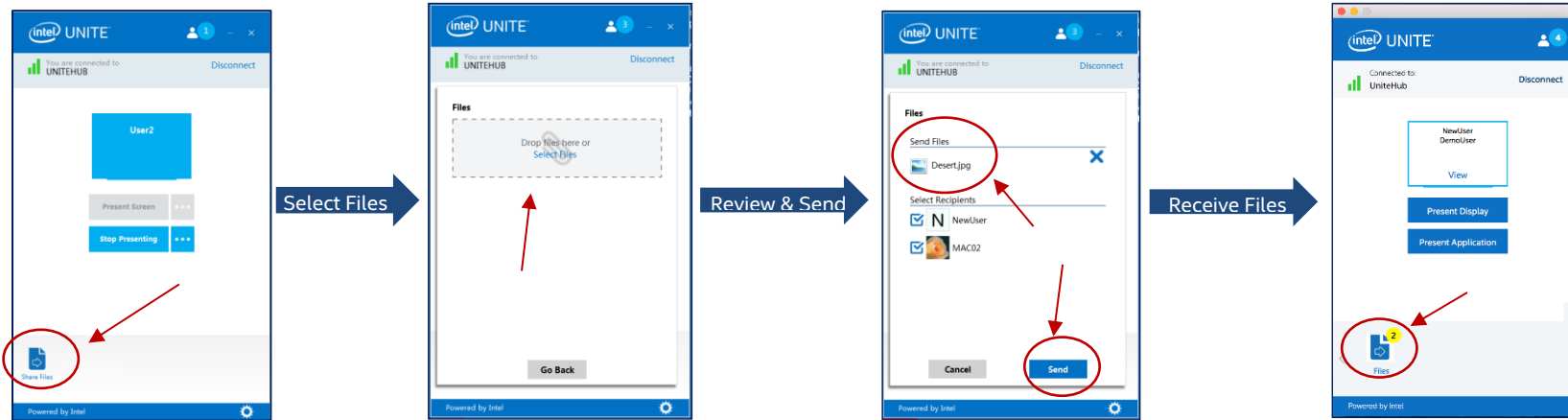
## Take Over a Presentation



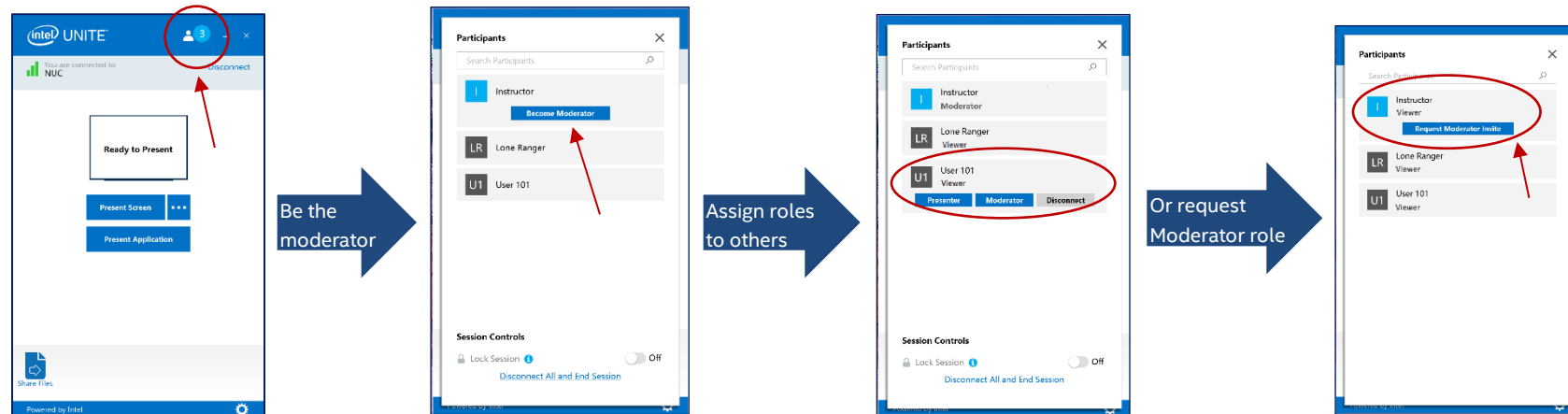
## Annotate on Presentations



## Share Files with other Participants

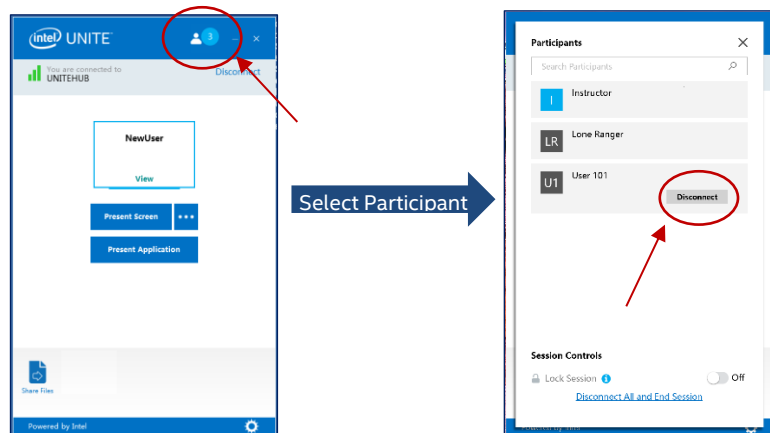


## Moderated Presentations

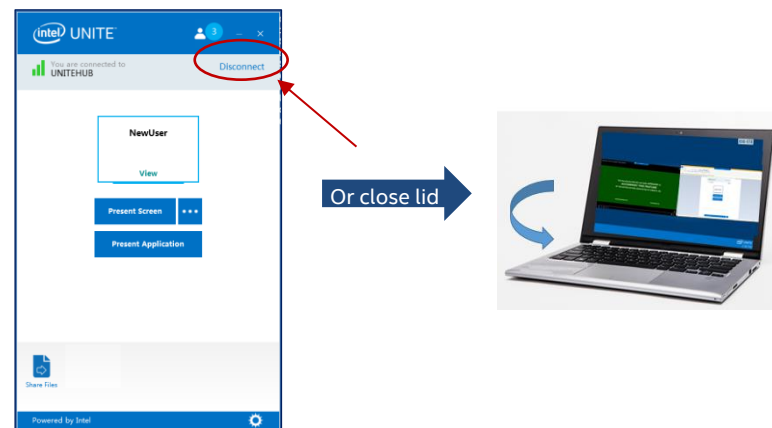


The Moderated sessions feature must be enabled by your system administrator. The “Self Promote mode” is shown above.

## Disconnect other Participants



## Disconnect from a Meeting/Session



Copyright © Intel Corporation, 2017. All rights reserved.  
\*Other names and brands may be claimed as the property of others.