

# Intel Unite<sup>®</sup> Plugin Guide for VDO360 CompassX\*

## INSTALLATION AND USER GUIDE

---

Version 1.2



## Legal Disclaimers & Copyrights

All information provided here is subject to change without notice. Contact your Intel representative to obtain the latest Intel product specifications and roadmaps.

Intel technologies' features and benefits depend on system configuration and may require enabled hardware, software or service activation. Performance varies depending on system configuration. No computer system can be absolutely secure. Check with your system manufacturer or retailer or learn more at [intel.com](http://intel.com).

You may not use or facilitate the use of this document in connection with any infringement or other legal analysis concerning Intel products described herein. You agree to grant Intel a non-exclusive, royalty-free license to any patent claim thereafter drafted which includes subject matter disclosed herein.

No license (express or implied, by estoppel or otherwise) to any intellectual property rights is granted by this document.

The products described may contain design defects or errors known as errata which may cause the product to deviate from published specifications. Current characterized errata are available on request. Intel disclaims all express and implied warranties, including without limitation, the implied warranties of merchantability, fitness for a particular purpose, and non-infringement, as well as any warranty arising from course of performance, course of dealing, or usage in trade.

Intel does not control or audit third-party benchmark data or the web sites referenced in this document. You should visit the referenced web site and confirm whether referenced data are accurate.

Intel, the Intel logo, and Intel Unite are trademarks of Intel Corporation or its subsidiaries in the U.S and other countries.

\*Other names and brands may be claimed as the property of others

© 2017 Intel Corporation. All rights reserved.



## Revision History

---

Revision	Date	Revision Notes
0.1	June 14 , 2017	Outline
1.0	November 13, 2017	Review and edit product names
1.1	November 17, 2017	Changes in layout
1.2	December 11, 2017	Changes in layout



## Contents

---

1	Introduction.....	5
1.1	Audience .....	5
2	Intel Unite® Plugin Requirements .....	6
2.1	Software Requirements.....	6
2.2	Hardware Requirements .....	6
3	Intel Unite® Plugin Installation.....	7
3.1	Intel Unite Software for Hubs Version 3.1 Installation.....	7
3.2	Installing the Intel Unite Plugin.....	8
4	Using the Intel Unite® Plugin for VDO360 CompassX* .....	12
4.1	Launch the Intel Unite Plugin in a Client.....	12
5	Using the VDO360 CompassX* Device .....	13
5.1	Camera 1 Controls .....	14
5.2	Camera 2 Controls .....	15
5.3	Camera Presets .....	16



# 1 Introduction

---

Welcome to the Intel Unite® Plugin Guide for VDO360 Clearwater\* with the VDO360 CompassX\* camera. This document highlights the basic but necessary steps to setup the plugin for a production environment.

## 1.1 Audience

This document is designed for use by IT professionals operating within a corporate environment, who are responsible for installing the Intel Unite software and adding optional features to the application.

## 2 Intel Unite® Plugin Requirements

---

### 2.1 Software Requirements

#### Server

- Intel Unite® solution with PIN server deployed

#### Hub

- Intel Unite® software for hubs version 3.1 or higher
- [VDO360\\* Camera Control Software](#)
- Intel Unite® plugin for VDO360 CompassX\* version 1.0.10
  - Download location: <https://uniteappshowcase.intel.com/>

#### Client

- Intel Unite® client software, version 3.1 (download from hardware vendors website)

### 2.2 Hardware Requirements

#### Hub

- [VDO360 Clearwater\\* device](#)
- VDO360 CompassX\* device as shown in [Figure 1](#).

Figure 1. VDO360 CompassX USB Camera



## 3 Intel Unite® Plugin Installation

---

### 3.1 Intel Unite Software for Hubs Version 3.1 Installation

In a standard installation, the VDO360 CompassX Plugin is designed as a two-camera system using the VDO360 Clearwater\* device and the remote VDO360 CompassX\* USB camera.

The VDO360 Clearwater device is a Windows\*-based PC with a camera mounted to it. The cameras require installation of the [CompassX software](#).

Figure 2. VDO360 Clearwater

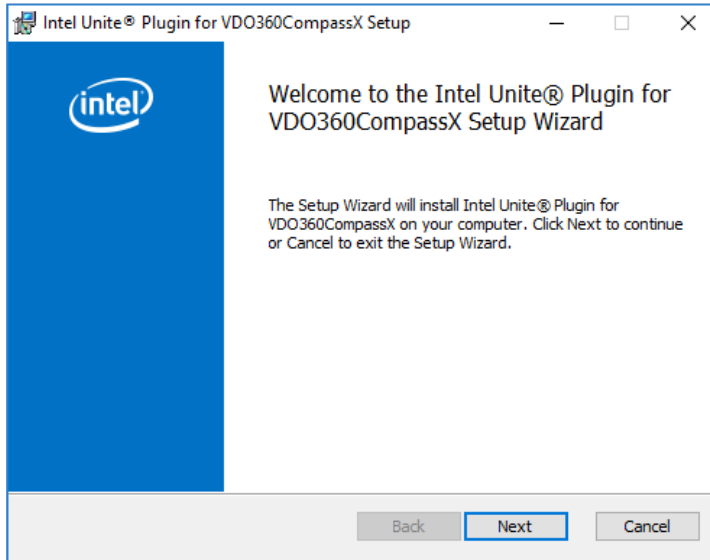


## 3.2 Installing the Intel Unite Plugin

On the hub running the Intel Unite® software (the VDO360 Clearwater device), install the Intel Unite plugin for the VDO360 Clearwater devices using the following steps.

1. Open the VDO360 Clearwater **Plugin MSI** file.  
The **Setup** window opens as shown in [Figure 3](#).

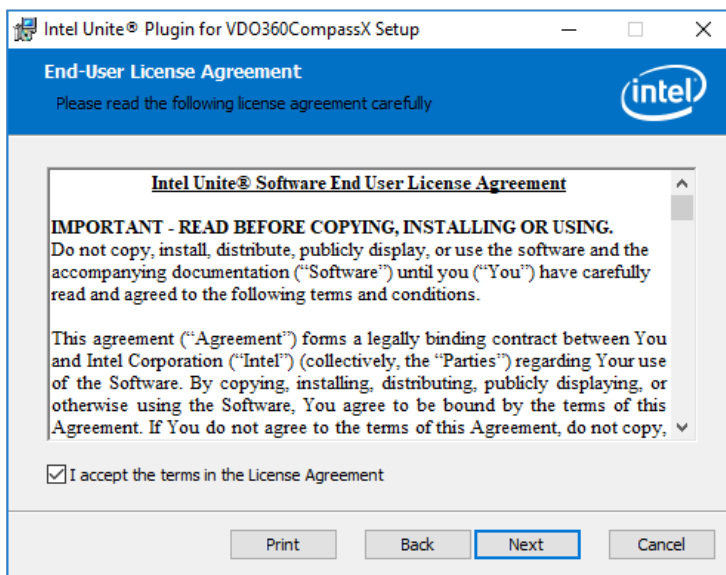
Figure 3. Setup Window



2. Select **Next** ([Figure 3](#)).

The **End User License Agreement** window opens as shown in [Figure 4](#).

Figure 4. License Agreement Window

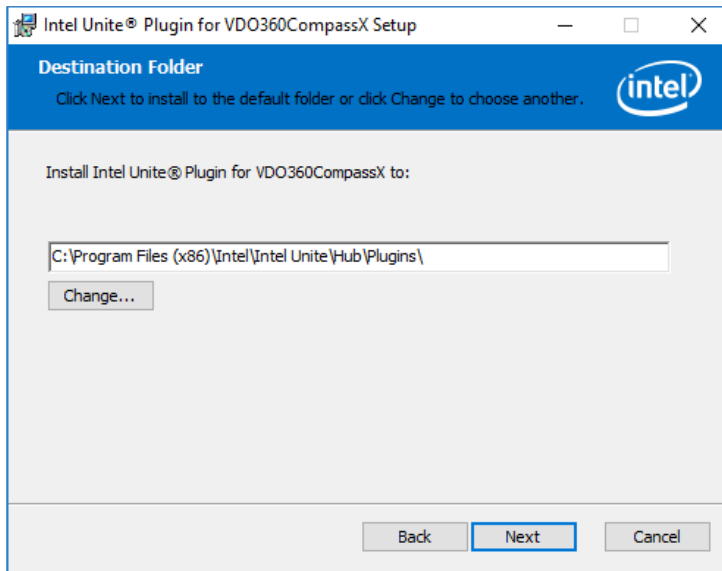




3. Accept the terms in the **License Agreement** (Figure 4).
4. Select **Next** (Figure 4).

The **Destination Folder** window opens as shown in Figure 5.

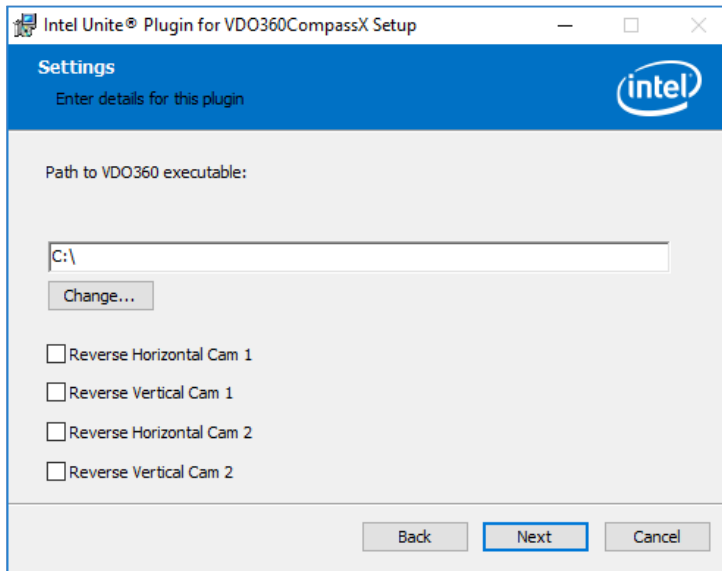
Figure 5. Destination Folder Window



5. Select **Next** (Figure 5).

The **Plugin Configuration** window opens as shown in Figure 6.

Figure 6. Plugin Configuration Window

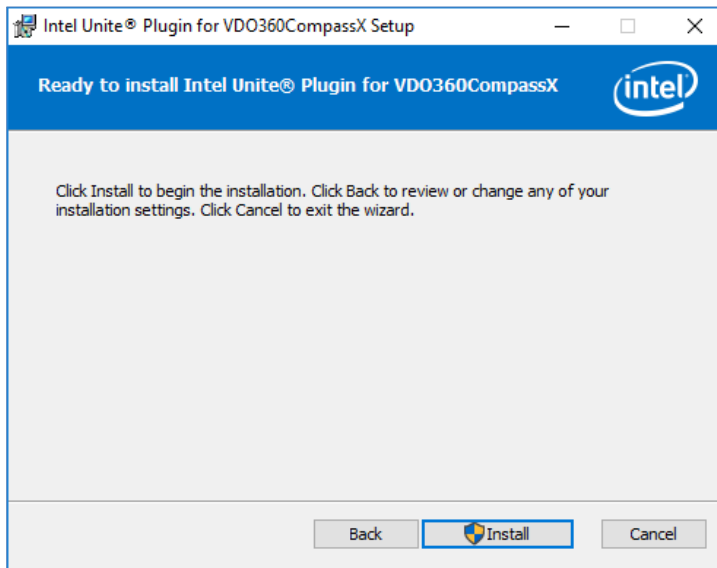


6. Specify the path for installation of the VDO360 CompassX application (see [Figure 6](#)). Currently the VDO360NECC\* software does not have an installer, so the installation location of the control app is user defined.
7. If your camera is in a position that requires the controls to be reversed, select the correct checkboxes (shown above in [Figure 6](#)):
  - **Reverse Horizontal Cam 1**
  - **Reverse Vertical Cam 1**
  - **Reverse Horizontal Cam 2**
  - **Reverse Vertical Cam 2**

8. Select **Next** (Figure 6).

The **Install** window opens as shown in Figure 7.

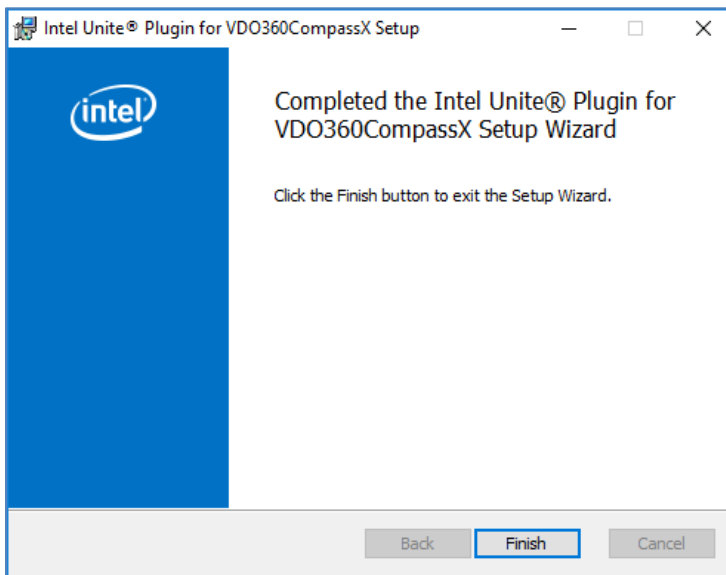
Figure 7. Install Window



9. Select **Install** (Figure 7).

The **Completed Install** window opens as shown in Figure 8.

Figure 8. Completed Install Window



10. Select **Finish** (Figure 8).

## 4 Using the Intel Unite® Plugin for VDO360 CompassX\*

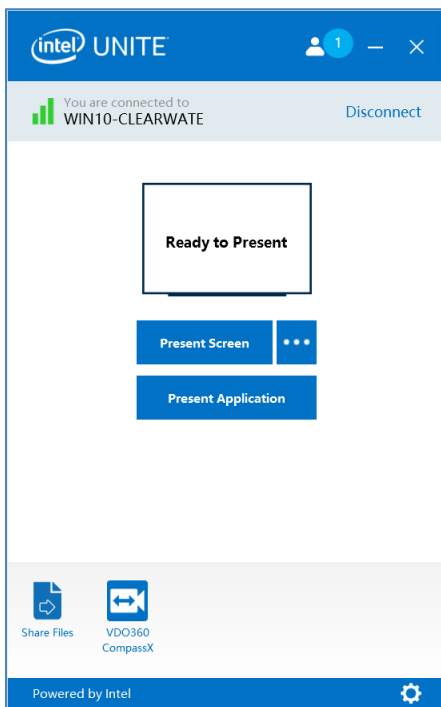
After the plugin is installed on the hub running the Intel Unite software, the plugin is automatically available to any Intel Unite client that makes a connection to the hub.

### 4.1 Launch the Intel Unite Plugin in a Client

The user makes the connection to the session on the Intel Unite solution using the PIN code. After the connection has been made, the **VDO360 CompassX Plugin\*** is visible at the bottom of the **Intel Unite Client Present** window as shown in [Figure 9](#).

To launch the plugin, select the **VDO360 CompassX Plugin** icon located at the bottom of the window ([Figure 9](#)).

Figure 9. Intel Unite® Client Present Window



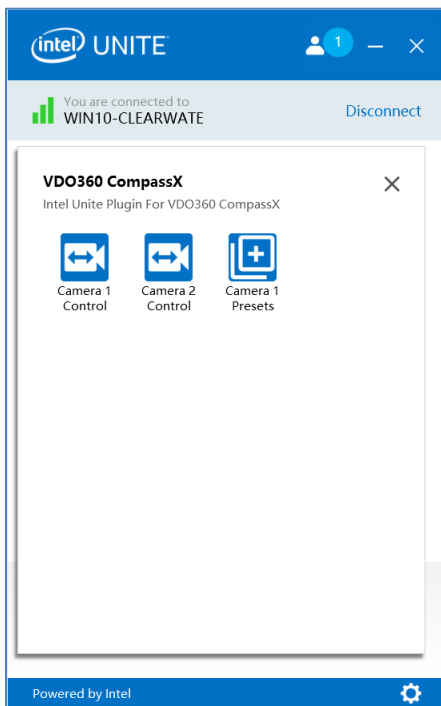
## 5 Using the VDO360 CompassX\* Device

After the plugin is launched, the **Plugin Management** window opens (Figure 10).

Within this window, the following controls are available:

- **Camera 1 Control:**  
Takes the user to the **Camera 1 Control** window. This camera is mounted to the VDO360 Clearwater\* PC.
- **Camera 1 Presets:**  
Takes the user to the **Camera 1 Presets** window. Allows the user to use preset positioning of the camera. Presets are configured from within the VDO360 camera app on the hub
- **Camera 2 Control:**  
Takes the user to the **Camera 2 Control** window. This remote camera is attached to the VDO360 main device via USB\* cord.

Figure 10. Plugin Management Window

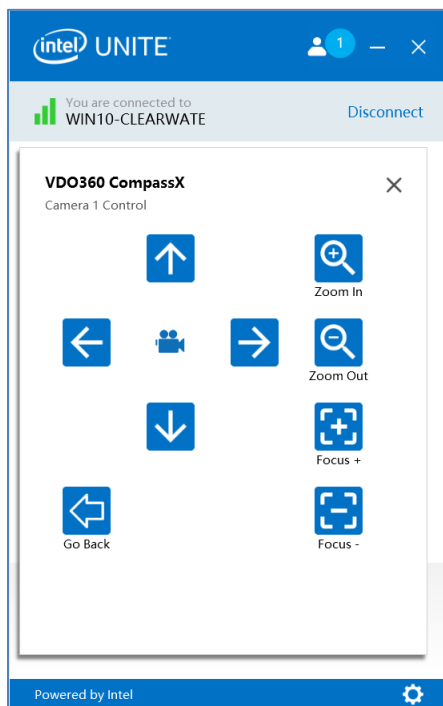


## 5.1 Camera 1 Controls

Selecting the **Camera Control** icon opens the **Camera Controls** window shown in [Figure 11](#) for the VDO360 Clearwater camera (Camera 1).

- Camera 1 Controls
  - **Move Up** and **Move Down**: Camera movement controls are reflected by the physical camera movements and are shown on the video stream.
  - **Move Right** and **Move Left**: Camera movement controls are reflected by physical camera movements and are shown on the video stream.
  - **Zoom In** and **Zoom Out**: Camera control that allows the camera to zoom in and out.
  - **Focus +** or **Focus -**: Controls for manual adjustment of the camera focus.
  - **Go Back**: Steps back to the **Plugin Management** window ([Figure 10](#)).

Figure 11. Camera Controls (Camera 1)

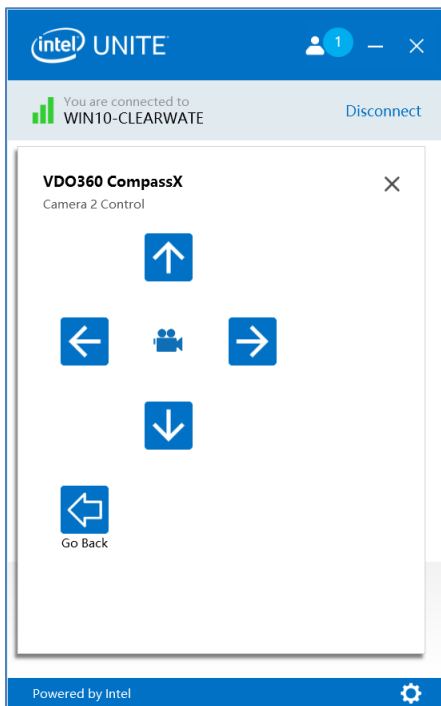


## 5.2 Camera 2 Controls

Select the **Camera 2 Control** icon to open the **Camera Controls** window for the VDO360 CompassX camera (Figure 12).

- **Move Up** and **Move Down**: Camera movement controls are reflected by the physical camera movements and are shown on the video stream.
- **Move Right** and **Move Left**: Camera movement controls are reflected by physical camera movements and are shown on the video stream.
- **Go Back**: Steps back to the **Plugin Management** window.

Figure 12. Camera Controls for Camera 2



## 5.3 Camera Presets

If the VDO360 Clearwater Camera Software created presets, these icons access the presets shown in Figure 13.

When the camera presets are selected, the camera moves to its previously established position.

Figure 13. Camera Presets

