

# Intel Unite<sup>®</sup> Plugin Guide for Sennheiser TeamConnect Wireless\*

## INSTALLATION AND USER GUIDE

---

Version 1.2



## Legal Disclaimers & Copyrights

All information provided here is subject to change without notice. Contact your Intel representative to obtain the latest Intel product specifications and roadmaps.

Intel technologies' features and benefits depend on system configuration and may require enabled hardware, software or service activation. Performance varies depending on system configuration. No computer system can be absolutely secure. Check with your system manufacturer or retailer or learn more at [intel.com](http://intel.com).

You may not use or facilitate the use of this document in connection with any infringement or other legal analysis concerning Intel products described herein. You agree to grant Intel a non-exclusive, royalty-free license to any patent claim thereafter drafted which includes subject matter disclosed herein.

No license (express or implied, by estoppel or otherwise) to any intellectual property rights is granted by this document.

The products described may contain design defects or errors known as errata which may cause the product to deviate from published specifications. Current characterized errata are available on request.

Intel disclaims all express and implied warranties, including without limitation, the implied warranties of merchantability, fitness for a particular purpose, and non-infringement, as well as any warranty arising from course of performance, course of dealing, or usage in trade.

Intel does not control or audit third-party benchmark data or the web sites referenced in this document. You should visit the referenced web site and confirm whether referenced data are accurate.

Intel, the Intel logo, and Intel Unite are trademarks of Intel Corporation or its subsidiaries in the U.S and other countries.

\*Other names and brands may be claimed as the property of others

© 2017 Intel Corporation. All rights reserved.



## Revision History

---

Revision	Date	Revision Notes
0.1	June 14 , 2017	Outline
1.0	November 13, 2017	Review and edit product names
1.1	November 17, 2017	Format changes
1.2	December 11, 2017	Changes in Layout



## Contents

---

1	Introduction .....	5
1.1	Audience.....	5
2	Intel Unite® Plugin Requirements .....	6
2.1	Software Requirements .....	6
2.2	Hardware Requirements.....	6
3	Intel Unite® Plugin for Sennheiser TeamConnect Wireless* Installation .....	7
3.1	Sennheiser TeamConnect Wireless Device Controls .....	7
3.2	Sennheiser TeamConnect Wireless Prerequisites.....	7
3.3	Sennheiser TeamConnect Wireless* Hardware Setup and Installation .....	8
3.3.1	Setup for Sennheiser TeamConnect Wireless Devices on the hub .....	8
3.4	Installing Intel Unite® Plugin for Sennheiser TeamConnect Wireless* Devices .....	9
4	Using the Sennheiser TeamConnect Wireless* .....	12



# 1 Introduction

---

Welcome to the Intel Unite® Plugin Guide for Sennheiser TeamConnect Wireless\* device. This document highlights the basic but necessary steps to set up the plugin for a production environment.

## 1.1 Audience

This document is designed for use by IT professionals operating within a corporate environment, who are responsible for installing the Intel Unite software and adding optional features to the application.

## 2 Intel Unite® Plugin Requirements

---

### 2.1 Software Requirements

The following software is required for the installation and use of Intel Unite® solution and the Sennheiser TeamConnect Wireless\* device.

- Intel Unite software for hubs version 3.1 or higher
- Intel Unite plugin for Sennheiser TeamConnect Wireless version 1.0.2
  - Download location: <https://uniteappshowcase.intel.com/>

### 2.2 Hardware Requirements

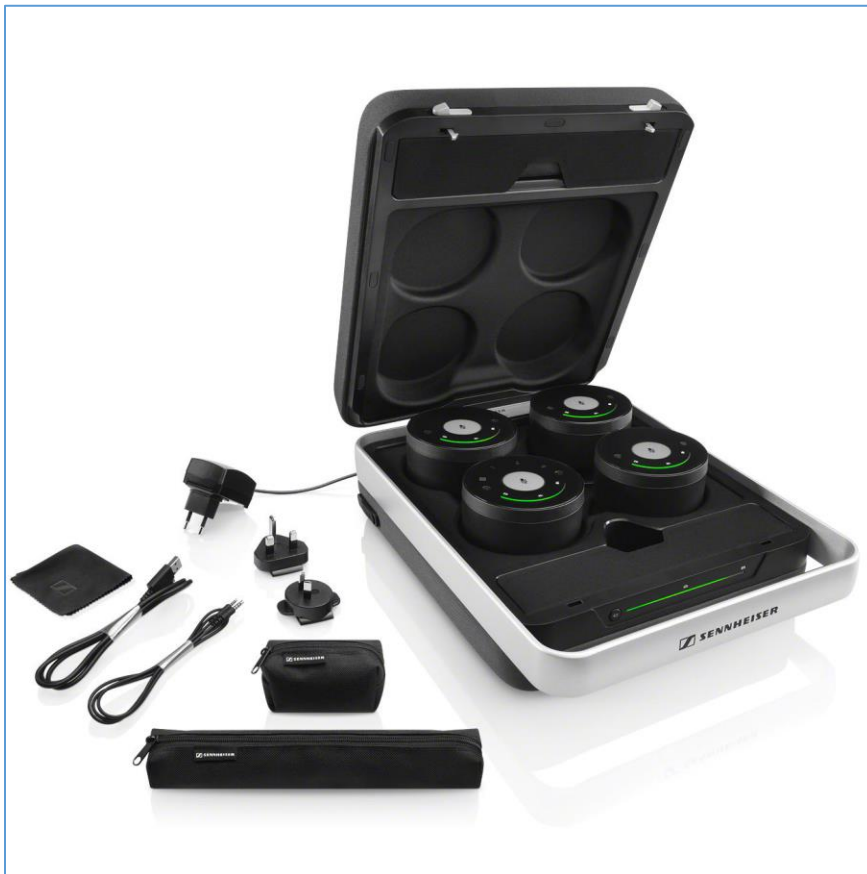
The Sennheiser TeamConnect Wireless Case Set is shown in [Figure 1](#).

## 3 Intel Unite® Plugin for Sennheiser TeamConnect Wireless\* Installation

---

The Sennheiser TeamConnect Wireless to be installed is shown in Figure 1.

Figure 1. [Sennheiser TeamConnect Wireless Case Set](#)



### 3.1 Sennheiser TeamConnect Wireless Device Controls

- **Audio** out +/- Mute
- **Microphone** +/- Mute

### 3.2 Sennheiser TeamConnect Wireless Prerequisites

- The Sennheiser system does not require any software or driver installation.
- The Intel Unite plugin requires setting the system default for Playback and Recording devices to be the Sennheiser device.
- The Intel Unite plugin for the Sennheiser device is to be downloaded from <https://uniteappshowcase.intel.com/>
- Install the Intel Unite software for hubs in Enterprise mode.

## 3.3 Sennheiser TeamConnect Wireless\* Hardware Setup and Installation

To install the hardware, connect the Sennheiser Wireless to the hub running the Intel Unite software via USB or Bluetooth following the vendor instructions.

### 3.3.1 Setup for Sennheiser TeamConnect Wireless Devices on the hub

The Intel Unite plugin for Sennheiser requires that the Sennheiser device be configured as the system default devices for playback and recording devices.

To set the system defaults:

1. Right-click the **Speaker** icon in the system tray.
2. Select **Playback Devices**.
  - a. Select the **Sennheiser** device that starts with **TC-W\*** from the list of output devices.



- b. Right-click and then select **Set as Default Device**.
3. Select the **Recording Tab**.
  - a. Select the **Sennheiser** device that starts with **TC-W\*** from the list of output devices.



- b. Right-click and then select **Set as Default Device**.



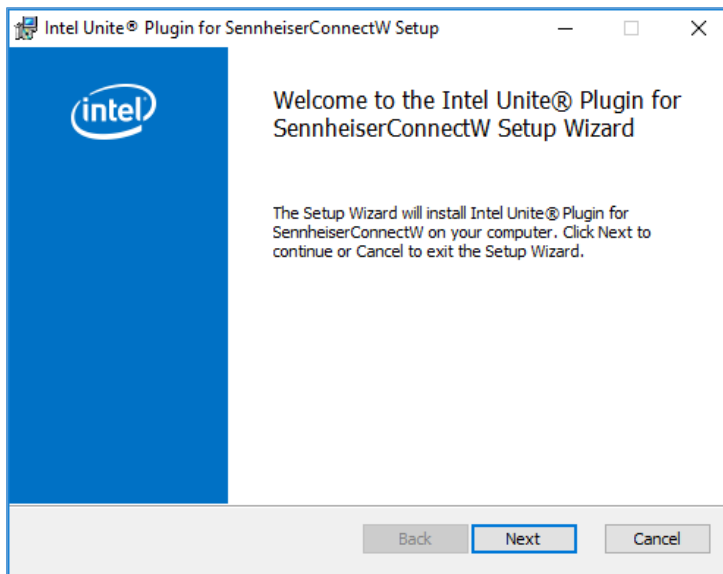
### 3.4 Installing Intel Unite® Plugin for Sennheiser TeamConnect Wireless\* Devices

On the hub running the Intel Unite software, install the Intel Unite plugin for Sennheiser using the following steps.

1. Open the Sennheiser **Plugin MSI** file.

The **Setup** window opens as shown in [Figure 2](#).

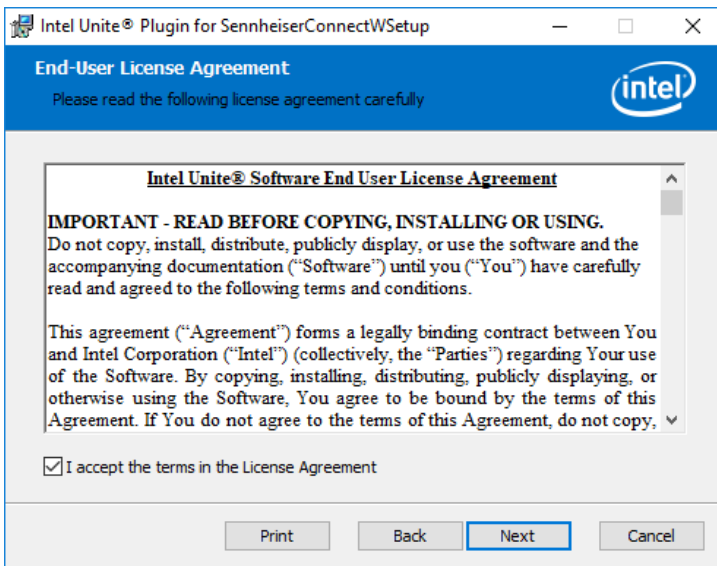
Figure 2. Setup Window



2. Select **Next** ([Figure 2](#)).

The **End User License Agreement** window opens as shown in [Figure 3](#).

Figure 3. License Agreement Window

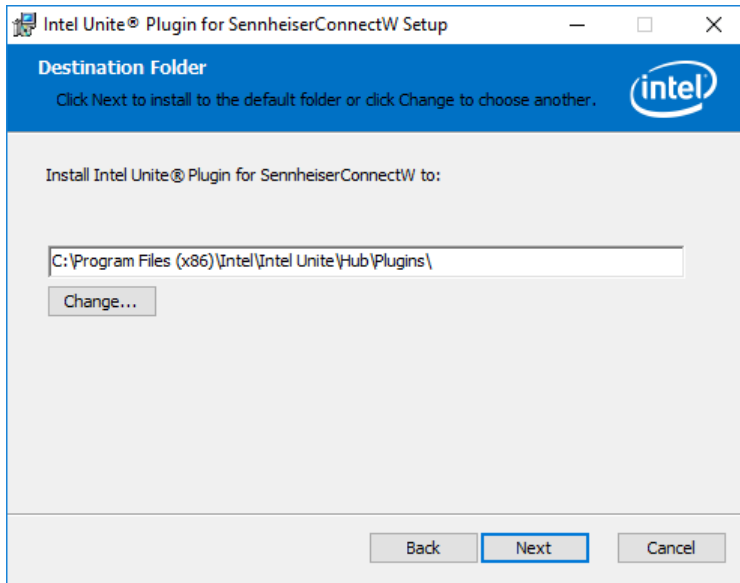


3. Accept the terms in the **License Agreement** ([Figure 3](#)).

4. Select **Next** (Figure 3).

The **Destination Folder** window opens as shown in Figure 4.

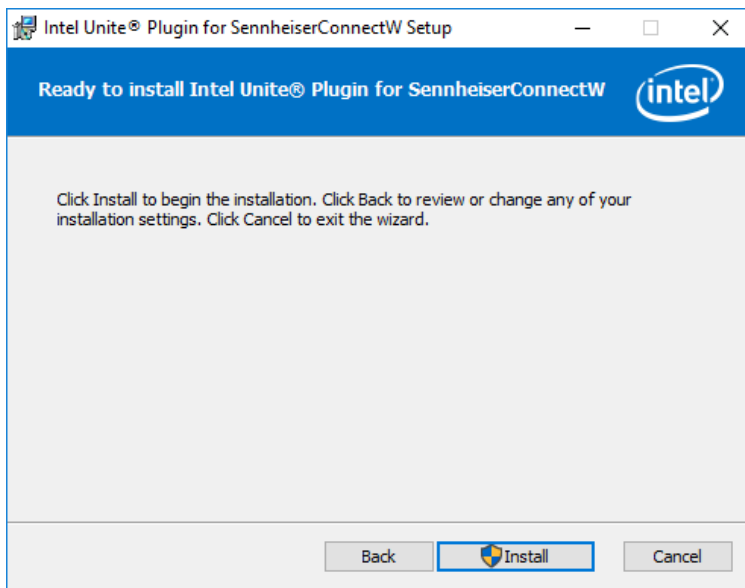
Figure 4. Destination Folder Window



5. Select **Next** (Figure 4).

The **Ready to install** window opens as shown in Figure 5.

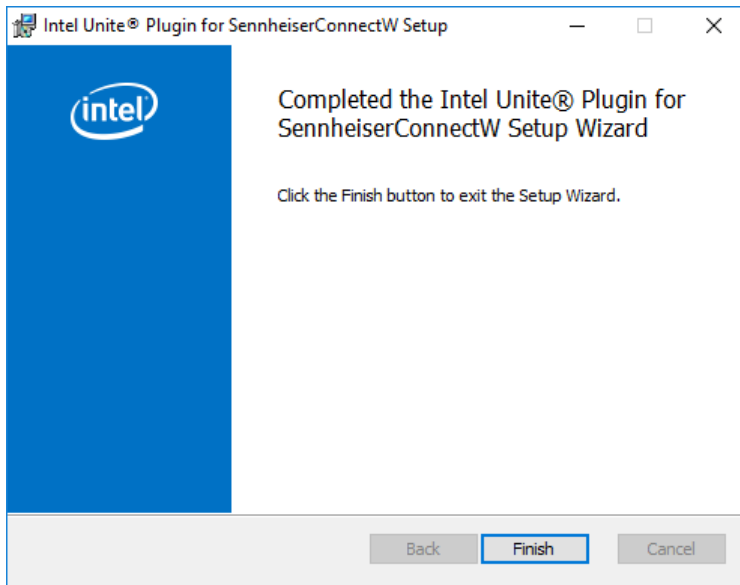
Figure 5. Install Window



6. Select **Install** (Figure 5).

The **Completed Install** window opens as shown in Figure 6.

Figure 6. Completed Install Window



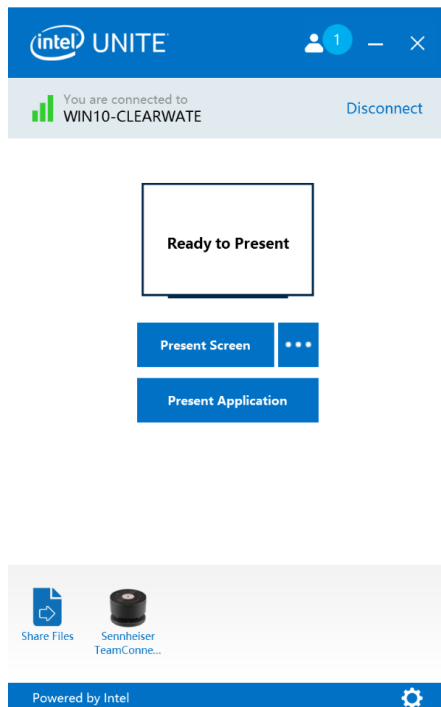
7. Select **Finish** (Figure 6).

## 4 Using the Sennheiser TeamConnect Wireless\*

The user makes the connection to the session in the Intel Unite® solution by entering the PIN code that is displayed on the hub into the Intel Unite client present screen. After the connection has been made, the **Sennheiser Plugin** icon is visible at the bottom of the **Intel Unite Client Present** window.

To launch the Intel Unite plugin for Sennheiser TeamConnect Wireless, Select the **Sennheiser Plugin** icon located at the bottom of the **Intel Unite Client Present** window (Figure 7).

Figure 7. Sennheiser TeamConnect Icon



After the Intel Unite plugin for Sennheiser TeamConnect Wireless is launched, the **Audio Management** window displays (Figure 8).

There are four audio controls available.

- **Volume Up:** Controls **Volume Up** for all speakers.
- **Volume Down:** Controls **Volume Down** for all speakers.
- **Mute Speaker:** Controls **Speaker** mute for all speakers.
- **Mute Microphones:** Controls **Microphone** gain and mute for all speakers.

Figure 8. Audio Management Window

