



Intel Unite[®] Solution

Version 4.0

Scratchpad Plugin Guide

Revision 1.0g

January 2019



Legal Disclaimers and Copyrights

This document contains information on products, services and/or processes in development. All information provided here is subject to change without notice. Contact your Intel representative to obtain the latest forecast, schedule, specifications and roadmaps.

Intel technologies' features and benefits depend on system configuration and may require enabled hardware, software or service activation. Performance varies depending on system configuration. No computer system can be absolutely secure. Check with your system manufacturer or retailer or learn more at Intel.com.

You may not use or facilitate the use of this document in connection with any infringement or other legal analysis concerning Intel products described herein. You agree to grant Intel a non-exclusive, royalty-free license to any patent claim thereafter drafted which includes subject matter disclosed herein.

No license (express or implied, by estoppel or otherwise) to any intellectual property rights is granted by this document.

The products and services described may contain defects or errors known as errata which may cause deviations from published specifications. Current characterized errata are available on request.

Intel disclaims all express and implied warranties, including without limitation, the implied warranties of merchantability, fitness for a particular purpose, and non-infringement, as well as any warranty arising from course of performance, course of dealing, or usage in trade.

Intel does not control or audit third-party benchmark data or the web sites referenced in this document. You should visit the referenced web site and confirm whether referenced data are accurate.

Intel, the Intel logo, and Intel Unite are trademarks of Intel Corporation or its subsidiaries in the U.S. and/or other countries.

*Other names and brands may be claimed as the property of others.

© 2018 Intel Corporation. All rights reserved.



Contents

1	Introduction	5
1.1	Audience	5
1.2	Overview	5
2	Scratchpad Plugin Flow	6
3	Scratchpad Installation	7
3.1	Prerequisites	7
3.1.1	Software requirements	7
3.1.2	Hardware requirements	7
3.2	Plugin Installation	7
3.2.1	Upload the Scratchpad Package	7
3.2.2	Approve the Scratchpad Package	7
3.2.3	Add Scratchpad to a Hub Configuration	8
3.2.4	Download Scratchpad to a Hub	8
4	Scratchpad on Client Devices	9
5	Scratchpad User Interface	11



Figures

Figure 1: Scratchpad Plugin Flow.....	6
Figure 2: Client Connected.....	9
Figure 3: Launch Scratchpad.....	10
Figure 4: Stop Scratchpad	10
Figure 5: Scratchpad User Interface	11



1 Introduction

Welcome to the Intel Unite® solution guide for the Scratchpad plugin. This guide provides instructions on installing the Scratchpad plugin and describes key features.

1.1 Audience

This document is designed for use by IT professionals who are responsible for installing the Intel Unite® software and adding optional features to the application.

1.2 Overview

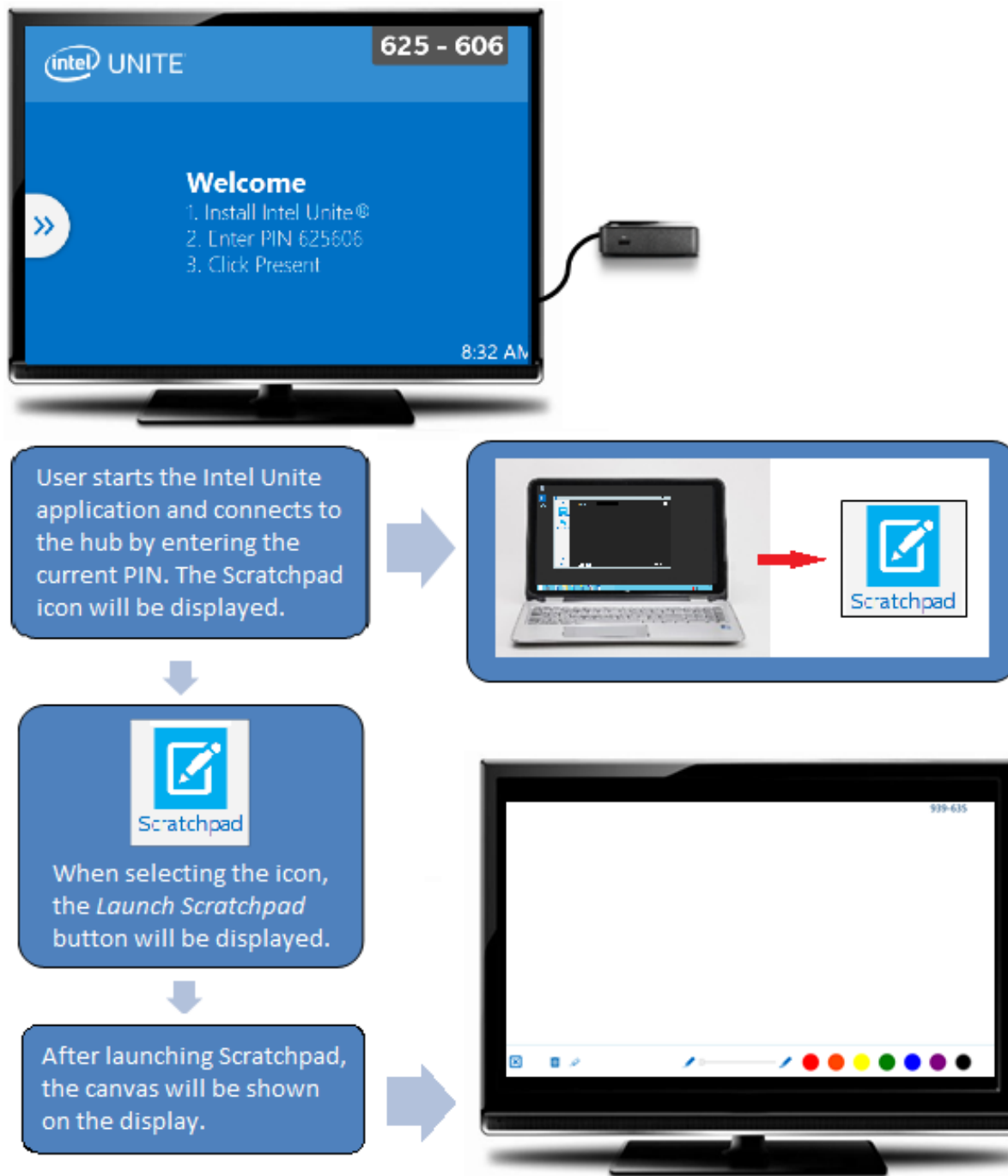
The Intel Unite® plugin for Scratchpad enables creative brainstorming and intuitive annotating for in-room users by providing a touchscreen drawing pad. The touchscreen enables participants to draw on the screen during a session.

With the Intel Unite® app, a touchscreen becomes a Scratchpad when the screen is enabled by an in-room participant. Participants can then collaborate in real time, and, when the session is over, the Scratchpad is cleared automatically.

2 Scratchpad Plugin Flow

In the figure below, the Scratchpad plugin is installed and configured on the hub.

Figure 1: Scratchpad Plugin Flow





3 Scratchpad Installation

This section describes the installation procedures for the Scratchpad plugin.

3.1 Prerequisites

The Intel Unite® plugin for Scratchpad must be installed on the hub after being uploaded to the server, and it has the following requirements.

3.1.1 Software requirements

- Intel Unite® software for the server, version 4.0 or greater.
- Intel Unite® software for the hub, version 4.0 or greater.

3.1.2 Hardware requirements

- Any touch-enabled display or touchscreen connected to the hub.

3.2 Plugin Installation

The Scratchpad installation requires interaction with the server and hub. This section describes the steps required to install the Scratchpad plugin on the server and hub.

3.2.1 Upload the Scratchpad Package

Using a system on the same network as the Admin Portal server, complete the following steps to upload the Scratchpad installation package:

1. Open a web browser (Intel recommends Chrome* for this installation).
2. Browse to the Admin Portal (<https://<FDQN of Server>/intelunite/admin>).
3. Log in to the Admin Portal with an account that has permission to upload packages.
4. Under **Device Management** menu, click **UPLOAD PACKAGE**.
5. Browse to the location of the Scratchpad .cab package file.
6. Select the Scratchpad .cab package file.
7. Click **Open**.
8. Confirm the appearance of the Success message.

3.2.2 Approve the Scratchpad Package

Using a system on the same network as the Admin Portal server, approve the Scratchpad package for installation, as follows:

1. Open a web browser (Intel recommends using Chrome for this installation).
2. Browse to the Admin Portal (<https://<FDQN of Server>/intelunite/admin>).



3. Log in to the Admin Portal with an account that has permission to approve packages.
4. Under **Device Management** menu, click **FEATURES/APPS**.
5. Click **Package Approval** to display the list of package(s) awaiting approval.
6. Find the line item with the name Scratchpad.
7. Click **Approve** for the Scratchpad line item.

3.2.3 Add Scratchpad to a Hub Configuration

Using a system on the same network as the Admin Portal server, complete the following steps to add Scratchpad to a hub configuration:

1. Open a web browser (Intel recommends using Chrome for this installation).
2. Browse to the Admin Portal (<https://<FDQN of Server>/intelunite/admin>).
3. Log in to the Admin Portal with an account that has permission to create and modify configurations.
4. Under **Device Management** menu, click **CONFIGURATIONS**.
5. Click **Hub Configurations** to display the list of hub configurations.
6. Click **Edit** next to the hub configuration that will have the Scratchpad capability.
7. Click the **plus sign** next to Scratchpad in the Available Features/Apps section, and verify that Scratchpad appears in the Selected Features/Apps section.
8. Click **Save Changes**.
9. Confirm the hub device is assigned to a hub group that has the hub configuration with Scratchpad assigned.

3.2.4 Download Scratchpad to a Hub

To download Scratchpad to a configured hub, complete the following steps on the hub:

1. On the hub device, close the Intel Unite® application, if it is running.
2. Open the Intel Unite® application for the hub.
3. Verify that the package is downloading on the hub.
4. Expand the side panel by clicking >> on the left side. If the >> is not shown, contact IT to enable this feature.
5. Click the **Apps** to display the plugins available on the hub. Verify that the Scratchpad plugins appears in the Apps section.

4 Scratchpad on Client Devices

To launch Scratchpad on client devices, meeting participants enter an Intel Unite® solution enabled room where the application is installed and then complete the following steps:

1. On the client device, open the Intel Unite® app.
2. Enter the PIN displayed on the hub.
3. Click the **Scratchpad** icon.
4. Click the **Launch Scratchpad** icon. The hub shows the Scratchpad on the display.

Closing Scratchpad does not delete the contents of the canvas. Closing enables participants to switch between Scratchpad, presentations, and other integrations without losing data. When all users disconnect from the Intel Unite® app, Scratchpad automatically resets and clears the canvas.

The steps and figures below illustrate how to launch and close Scratchpad.

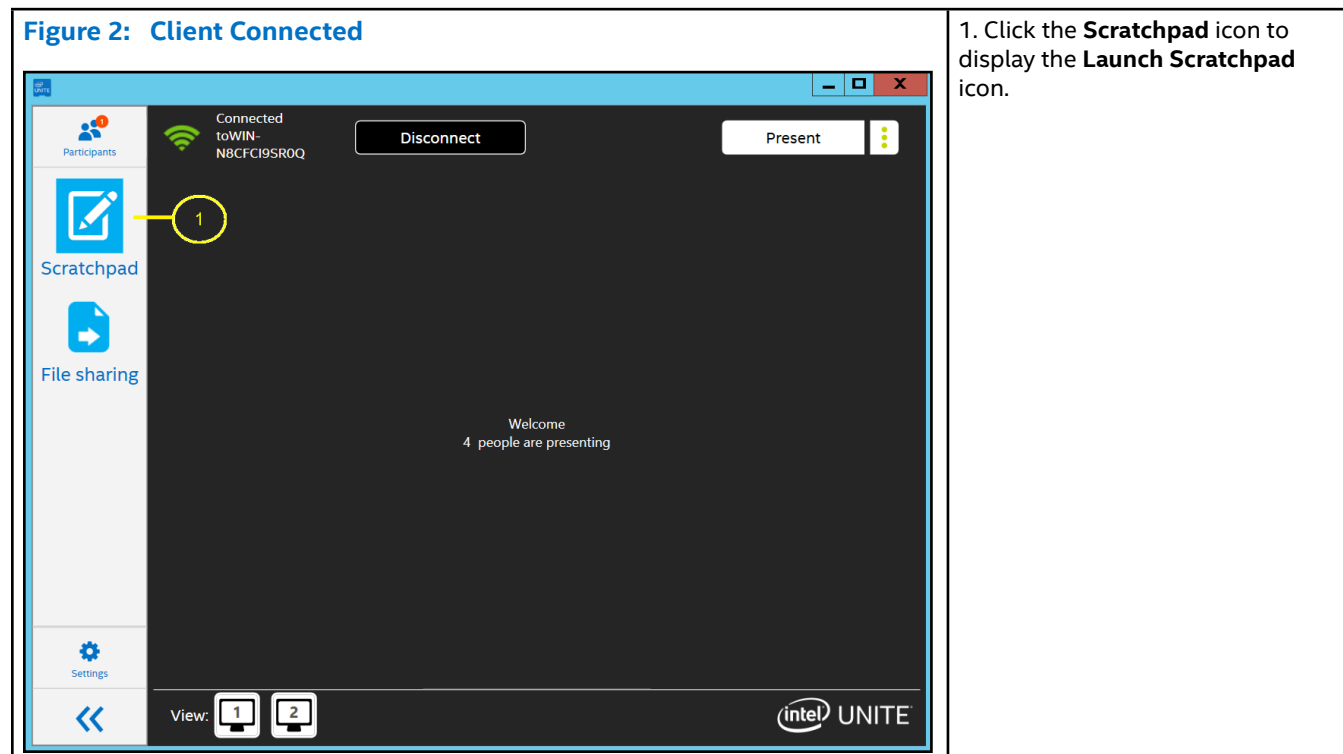
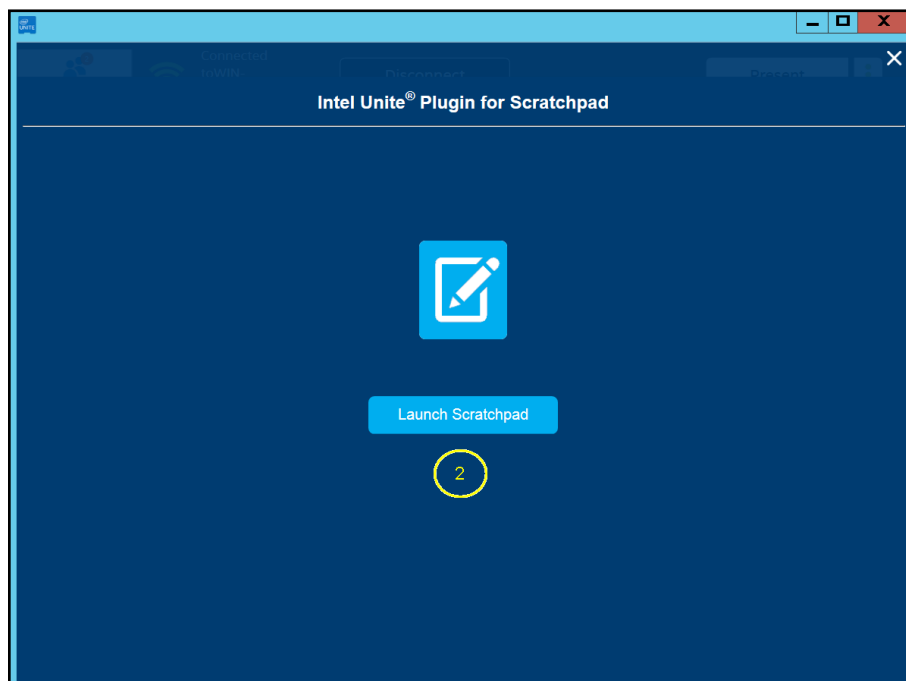
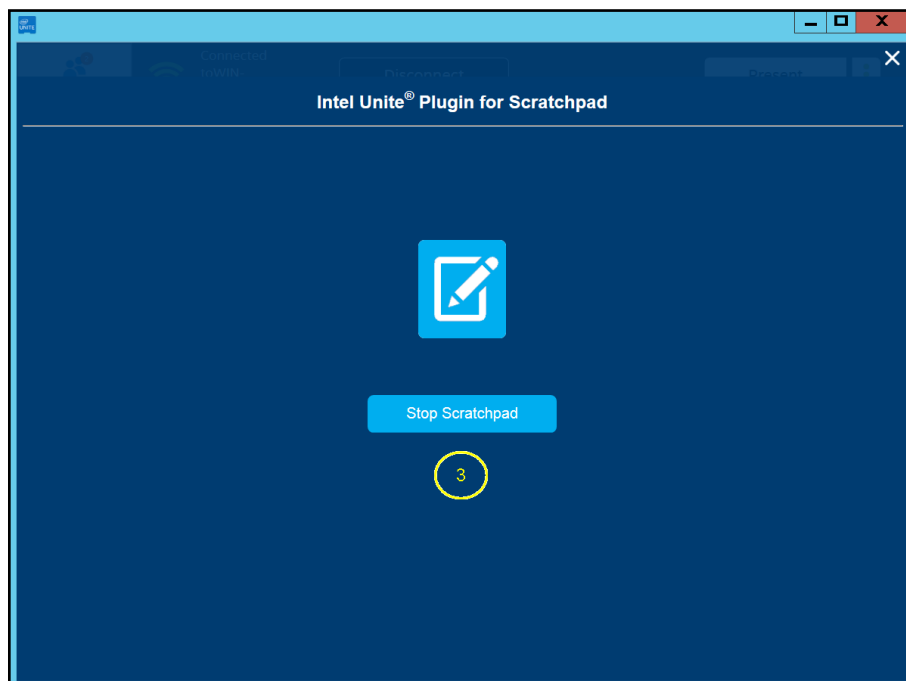


Figure 3: Launch Scratchpad



2. Click **Launch Scratchpad** to start Scratchpad on the hub.

Figure 4: Stop Scratchpad



3. To close Scratchpad, click **Stop Scratchpad**.

5 Scratchpad User Interface

The following details major components of the Scratchpad user interface.

1. Close (does not clear the Scratchpad canvas)
2. Eraser
3. Delete (clears the Scratchpad canvas)
4. Open Side Panel
5. Pen Color
6. Pen Width
7. Hub PIN
8. Touch canvas

Figure 5: Scratchpad User Interface

