

# Intel<sup>®</sup> Active System Console v7.0

## Release Notes

---

Release Date: Apr 2015

Build # 27

## Legal Statements

INFORMATION IN THIS DOCUMENT IS PROVIDED IN CONNECTION WITH INTEL® PRODUCTS FOR THE PURPOSE OF SUPPORTING INTEL DEVELOPED SERVER BOARDS AND SYSTEMS. NO LICENSE, EXPRESS OR IMPLIED, BY ESTOPPEL OR OTHERWISE, TO ANY INTELLECTUAL PROPERTY RIGHTS IS GRANTED BY THIS DOCUMENT. EXCEPT AS PROVIDED IN INTEL'S TERMS AND CONDITIONS OF SALE FOR SUCH PRODUCTS, INTEL ASSUMES NO LIABILITY WHATSOEVER, AND INTEL DISCLAIMS ANY EXPRESS OR IMPLIED WARRANTY, RELATING TO SALE AND/OR USE OF INTEL PRODUCTS INCLUDING LIABILITY OR WARRANTIES RELATING TO FITNESS FOR A PARTICULAR PURPOSE, MERCHANTABILITY, OR INFRINGEMENT OF ANY PATENT, COPYRIGHT OR OTHER INTELLECTUAL PROPERTY RIGHT.

UNLESS OTHERWISE AGREED IN WRITING BY INTEL, THE INTEL PRODUCTS ARE NOT DESIGNED NOR INTENDED FOR ANY APPLICATION IN WHICH THE FAILURE OF THE INTEL PRODUCT COULD CREATE A SITUATION WHERE PERSONAL INJURY OR DEATH MAY OCCUR.

Intel may make changes to specifications and product descriptions at any time, without notice. Designers must not rely on the absence or characteristics of any features or instructions marked "reserved" or "undefined." Intel reserves these for future definition and shall have no responsibility whatsoever for conflicts or incompatibilities arising from future changes to them. The information here is subject to change without notice. Do not finalize a design with this information.

The products described in this document may contain design defects or errors known as errata which may cause the product to deviate from published specifications. Current characterized errata are available on request.

Contact your local Intel sales office or your distributor to obtain the latest specifications and before placing your product order.

Intel is a trademark of Intel Corporation in the U.S. and other countries.

Microsoft, Windows, Windows Server, Active Directory, and Vista are trademarks, or registered trademarks of Microsoft Corporation in the United States and/or other countries.

\* Other names and brands may be claimed as the property of others.

Copyright © 2008 – 2015 Intel Corporation. All rights reserved.

## 1. PACKAGE CONTENTS

Intel® Active System Console v7.0.27 (abbreviated as **IASC** hereafter)

## 2. SUPPORTED OPERATING SYSTEMS

Microsoft Windows\* Server 2012 R2 EM64T

Microsoft Windows\* Server 2012 Enterprise

Microsoft Windows\* Server 2008 R2 SP1 EM64T

Red Hat Enterprise Linux 6\* Version 5 32-bit & EM64T (abbreviated as **RHEL** hereafter)

Red Hat Enterprise Linux 7\* EM64T

SUSE Linux Enterprise Server\* 11 SP3 32-bit & EM64T (abbreviated as **SLES** hereafter)

SuSE\* Linux ES 10 SP4 (x86/x64)

SuSE\* Linux ES 11 SP2 (x86/x64)

SuSE\* Linux ES 11 SP3 (x86/x64)

SuSE\* Linux ES 12 SP0 (x64)

**Note:** OS without GUI (Graphical User Interface) is not supported.

## 3. SUPPORTED WEB BROWSER

Mozilla\* Firefox 3.6 and later versions

Microsoft Internet Explorer 7.0, 8.0, 9.0, 10.0 & 11.0

(Best viewed in screen resolution from **1024 X 768** to **1440 X 900**)

## 4. SUPPORTED SERVER PLATFORMS

Intel® Servers board S2600WC

Intel® Servers board S2600KP

Intel® Servers board S2600TP

Intel® Servers board S2600CW

## 5. SUPPORTED LANGUAGE

English

## 6. FEATURES

Refer to the *Intel® Active System Console User Guide* for detailed features and usage

## 7. IMPORTANT NOTES AND FAQs

**Table 1: TCP ports used by Intel® Active System Console**

Port #	Description	Firewall Exception Required
7777	Used for discovery and management by Intel® Multi Server Manager (MSM)	Yes **
9393	Used for web server hosting	Yes ***
4369	Used for socket based IPC on the software backend	No

9191	Used for Lighttpd web service	No
521	Used for Lighttpd web service and PHP CGI.	No

**Notes:**

- \*\* 7777 must not be blocked by Firewall when running IASC.
- \*\*\* 9393 must not be blocked by Firewall to allow remote access of IASC over a network.

**8. INSTALLATION ISSUES AND ENVIRONMENT REQUIREMENTS**

8.1 System runtime components such as Microsoft Visual C++ Redistributions 2005 and 2010 x86 are pre-requisites for IASC installation, the IASC installer will install those components automatically.

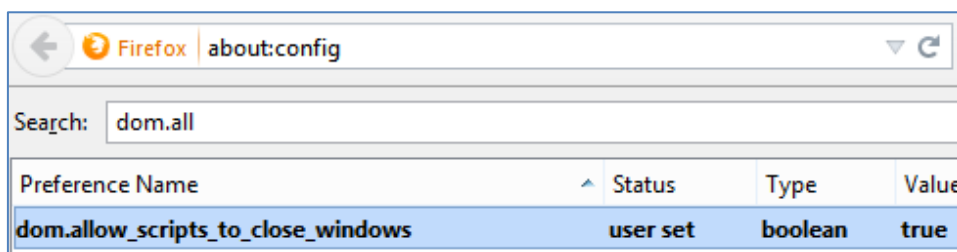
8.2 During installation of IASC on Linux Operating Systems, the License Agreement may be loaded with Firefox browser and cannot be closed by clicking the "Close" button. This is due to the Firefox browser's default setting which disabled any external script to terminate the browser.

To enable the button,

**Step 1:** In Mozilla Firefox browser, type **about:config** in the URL textbox.

**Step 2:** Search for **dom.allow\_scripts\_to\_close\_windows** and double-click it to set the value to "true".

**Step 3:** Click the "Close" button, it shall close the License Agreement and browser in all.



8.3 Installation of IASC on RHEL\* 5.x requires **libxslt.so**, a compiled library file which is not installed by default OS setting. This may halt the installation with dependency error message. To resolve the issue, install compatible **libxslt.<os\_arch>.rpm** before re-installing IASC.

8.4 For RHEL\* 6.4 (Legacy Boot and UEFI Optimized Boot), SLES\* 11 (UEFI Optimized Boot only) and their consecutive releases, the Intelligent Platform Management Interface (IPMI) drivers must always be started before starting IASC service, including the installation.

To start the IPMI service,

**Step 1:** Enter **modprobe ipmi\_devintf** \* in a Linux Terminal.

*\*This command works only if the openIPMI package has been installed in the OS.*

**Step 2:** (i) For first-time installation of IASC®, re-launch the installation script after **Step 1**, IASC service will use the latest setting of IPMI.

- (ii) For post-installation, run `/usr/local/asc/bin/IASCService.sh` script to restart IASC after **Step 1**, this will update the IPMI setting in IASC.

**Note:** Both steps have to be performed for each System reboot.

- 8.5 (i) Installation of IASC on RHEL\* 6.x (x64 architecture only) requires the following 32-bit shared library files which are not installed with the OS by default. The shared libraries could be installed from the RHEL\* OS installation image disc (ISO) containing their respective RPMs.

**Table 2: Required RPMs for IASC Installation**

1. zlib-1.2.3*i686*	15. nss-softokn-3.12.9*i686*
2. libxml2-2.7.6*i686*	16. nss-3.14.0.0*i686*
3. libgpg-error-1.7*i686*	17. cyrus-sasl-lib-2.1.23*i686*
4. libgcrypt-1.4.5*i686*	18. libidn-1.18-2*i686*
5. libxslt-1.1.26*i686*	19. libcom_err-1.41.12*i686*
6. libstdc++-4.4.7*i686*	20. openldap-2.4.23*i686*
7. compat-libstdc++-33-3*i686*	21. keyutils-1.4-4*x86_64*
8. ncurses-libs-5.7-3*i686*	22. keyutils-libs-1.4-4*i686*
9. ncurses-devel-5.7-3*i686*	23. libselinux-2.0.94*i686*
10. db4-4.7*i686*	24. krb5-libs-1.10.3*i686*
11. nspr-4.9*i686*	25. openssl-1.0.0-27*i686*
12. nss-util-3.14.0*i686*	26. libssh2-1.4.2*i686*
13. readline-6.0*i686*	27. openssl098e-0.9.8e-17*i686*
14. sqlite-3.6.20*i686*	28. libcurl-7.19.7*i686*

Installation in openSUSE\* Enterprise Linux 12 x64\_86 and above version requires the following minimum version of the packages preinstalled in the system

1. libxslt1-32bit-1.1.28-6.57.x86\_64\*
2. libgcrypt20-32bit-1.6.1-9.1.x86\_64\*

**Note:** The RPMs have inter-dependency which requires them to be installed in sequence as numbered as in **Table 2**.

- (ii) The IASC installation package has included a shell script `RHELx86_64AUTO.sh` for the convenience of installing the 26 RPMs all in once.

To use the script,

**Step 1:** Insert a RHEL\* 6.x OS installation image disc containing the 32-bit shared library RPMs to the system.

**Step 2:** Unzip the shell script and run `sh RHELx86_64AUTO.sh` in Linux Terminal.

**Disclaimer:** The `RHELx86_64AUTO.sh` script is intended to be used as an installation auxiliary, and it is not maintained as an Intel® product, thus its content may be outdated and rendered the script erroneous. However, user may install each of the RPMs directly from the RHEL\* OS ISO Disc or download using `yum install`.

8.6 User may see the following warnings during installation of IASC on SLES\*:

*Insserv: warning: script 'K01Appcore' missing LSB tags and overrides*

*Insserv: warning: script 'S01Appcore' missing LSB tags and overrides*

Insserv warning are bootscript comment header warning. User may ignore these warnings as they do not affect the installation.

8.7 Installation of IASC on Microsoft Windows 8\* and Windows 2012\* R2 requires UAC to be disabled using direct registry modification.

**Step 1:** Launch regedit.exe, look through directories for

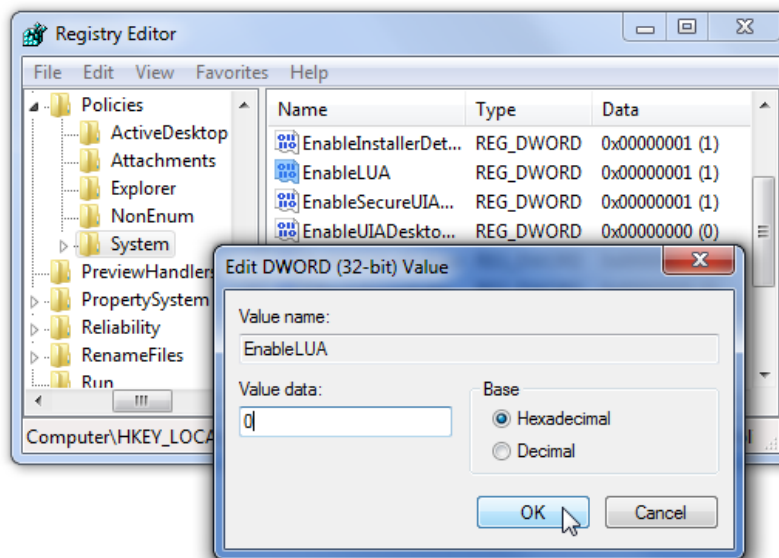
**HKEY\_LOCAL\_MACHINE\SOFTWARE\Microsoft\Windows\CurrentVersion  
\Policies\System**

**Step 2:** Look for entry EnableLUA, and alter the values as followed

UAC Enabled: 1

UAC Disabled: 0

**Step 3:** Save the setting and reboot the system if required.



8.9 User must make sure all necessary services below are running on Linux OS before launching IASC:

- (i) lighttpd
- (ii) ascpolicy
- (iii) Appcore

8.9 Run the shell script file **/usr/local/asc/bin/IASCService.sh** or run the following command if those services are not running:

- (i) **/etc/init.d/lighttpd start**
- (ii) **/etc/init.d/ascpolicy start**
- (iii) **/etc/init.d/Appcore start**

8.10 If web-server seems to be non-responsive on Linux\* OS, run the following command:

**`/etc/init.d/lighttpd restart`**

8.11 User must make sure two Windows\* services, **IASCServiceManager** and **Appcore**, are always running on Windows\* OS. To run the services, execute the batch file "**IASCService.bat**" in the installed path, user may run "services.msc" from command line and search for the service names.

Manually start these services if they are stopped. If the problem persists due to Baseboard Management Controller (BMC) interface being non-responsive, a power cycle may resolve the problem.

8.12 User must make sure that the system installed with IASC is **NOT** installed with SNMP-SA or equivalent applications. IASC may provide incorrect and incomplete information or even ceased from running as it would conflict with SNMP-SA on using the same system resources.

8.13 Installation of IASC in Linux\* Operating Systems will show warning message (shown below message) at the end of the installation process. This warning is to let user know user may experience IASC login failure if the system network configuration not working properly. For more details refer section 10.

"!!! Warning.....!!!!

*Please check the DNS server setting or add the hostname into system file /etc/hosts in order for the Active System Console to do name resolution for the system name to avoid login fail issue, refer to the software Release Notes for details."*

## **9. USER LOGIN ISSUES AND BROWSER SETTINGS**

9.1 IASC supports secure transport using SSL/TLS authentication process with self-signed certification. But as the certification is not signed by publicly acknowledged authority, default security settings of web browsers may blocked IASC Login Page from loading and prompt warning messages of "Untrusted Connection" (Firefox) or "Invalid Security Certification" (Internet Explorer)

To resolve this,

**Method 1:** Override the warnings and accept the certificate, proceed to login page. User must ensure the certificate is originated from the application on a trusted secure network.

**Method 2:** Add your own certificate, please refer to User Guide for further instructions.

9.2 When user logged into IASC webpage [https://system\\_IP:9393/asc/](https://system_IP:9393/asc/) for the first time, IASC may appear unresponsive for a few minutes as it is updating its system health data enquiries with latest information.

9.3 When using Internet Explorer to launch IASC, users may clicked button with no response, or not able to launch pop-up active windows upon clicking button.

To resolve this, user must edit setting of Internet Explorer:

**Step 1:** Go to **Menu -> Tools -> Options -> Security -> Select Internet Zone -> Custom Level -> Scripting**

**Step 2:** Under Scripting, enable all Active Scripting and Scripting options.

**Step 3:** Save the new setting, then restart Internet Explorer and load IASC page.

9.3 User may not able to save the reports generated by Report feature of IASC in Internet Explorer\* due to browser setting.

To change this,

**Step 1:** Go to **Tools -> Internet Options -> Advanced -> Security**, and uncheck the 'Do not save encrypted pages to disk'.

**Step 2:** Retry generating the reports and save.

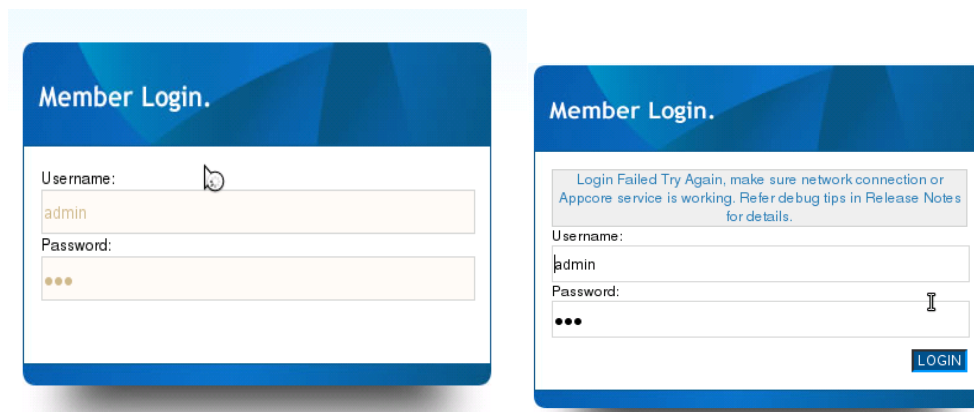
9.4 The "waiting" icon (spinning wheel, flashing dots) and Critical Event scrolling may not work if the browser does not allow animation to play.

To enable the feature in Internet Explorer,

**Step 1:** Go to **Tools -> Internet Options -> Advanced -> Multimedia**, and check the 'Play animations' option.

**Step 2:** Refresh browser or re-launch IASC.

**10.** When IASC login shows "Login Failed Try Again" or no activity, user should follow the methods below to debug the issue.



To resolve this,

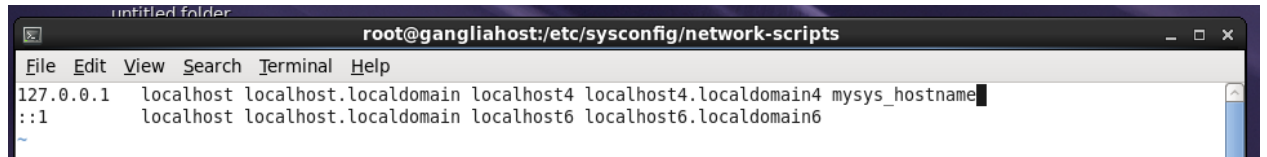
**Method 1:** If Appcore service is stop, restart the service by running shell script file `/usr/local/asc/bin/IASCService.sh`.

**Method 2:** Check the network connection. If DNS network connection is disconnected, IASC will keep looping until time-out. If user decides not to use DNS network anymore, user can set the system hostname into the `/etc/hosts` refer below example



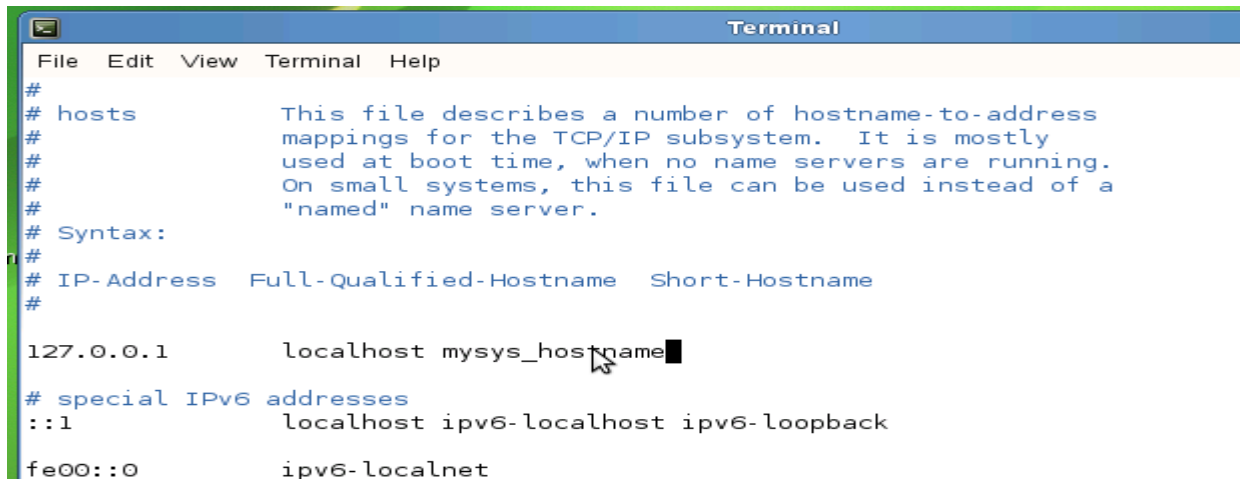
(mysys\_hostname added into hosts file). Restart IASC service after setting the system hostname.

Rhat OS:



```
untitled folder
root@gangliahost:/etc/sysconfig/network-scripts
File Edit View Search Terminal Help
127.0.0.1 localhost localhost.localdomain localhost4 localhost4.localdomain4 mysys_hostname
::1 localhost localhost.localdomain localhost6 localhost6.localdomain6
```

SuSE OS:



```
Terminal
File Edit View Terminal Help
#
# hosts This file describes a number of hostname-to-address
# mappings for the TCP/IP subsystem. It is mostly
# used at boot time, when no name servers are running.
# On small systems, this file can be used instead of a
# "named" name server.
# Syntax:
#
# IP-Address Full-Qualified-Hostname Short-Hostname
#
127.0.0.1 localhost mysys_hostname
# special IPv6 addresses
::1 localhost ipv6-localhost ipv6-loopback
fe00::0 ipv6-localnet
```

## 11. KNOWN INFORMATIONAL IRREGULARITIES AND ISSUES

1. Part of system sensor information, such as on Memory and Processor, are not available in IASC that installed on system with GPT volume.
2. Sensor Events are generated by IASC only if the sensor is functional and providing analyzable reading; sensors which are showing *NOT\_AVAILABLE* state are not used in system health calculation, e.g. PCIe Corr sensor.
3. When a CD/DVD is inserted to the system, IASC would show "0MB space left" and generates a Critical warning. Once the CD/DVD is removed from system, IASC® returns to Healthy state.
4. IASC may not able to comprehend FRUSDR details which have special characters such as "&,\*,#", thus blank values may be shown.
5. IASC is not supported on Virtual Environment and Non-BMC Server Board.
6. SOL BAUD Rate configuration is not available for Intel® Server S1200RP product family.
7. HSC FW version for Intel® Server S1200RP product family is shown in unseparated format on screen.
8. Boot order changes might not be successful if "syscfg /bbo" command is being used before using IASC to change the boot order. Use bios F2 setup page, press F9 to load bios default & reconfigure the boot order if this issue happen.

**Note:** To obtain additional support information, please go to

[http://www.intel.com/p/en\\_US/support/highlights/server/sysmgmt](http://www.intel.com/p/en_US/support/highlights/server/sysmgmt)