

プログラム名	DHA-B
機種名	F90T12NS1F7-57A01B1
ファン型式	F90T12NS1F7 シリーズ
ヒートシンク型式	F90T B シリーズ

寸法番号	CTF寸法 リスク区分	測定器
F H S A	1	中リスク HG, DI
	2-1	低リスク CMM
	2-2	低リスク CMM
	3	高リスク HG, DI
		注記6 JIG
20	低リスク ECB	

寸法番号	CTF寸法 リスク区分	測定器
F A N	4	低リスク DN
	寸法番号	CTF寸法 リスク区分
H S K	5	高リスク CMM
	6	中リスク HG, DI

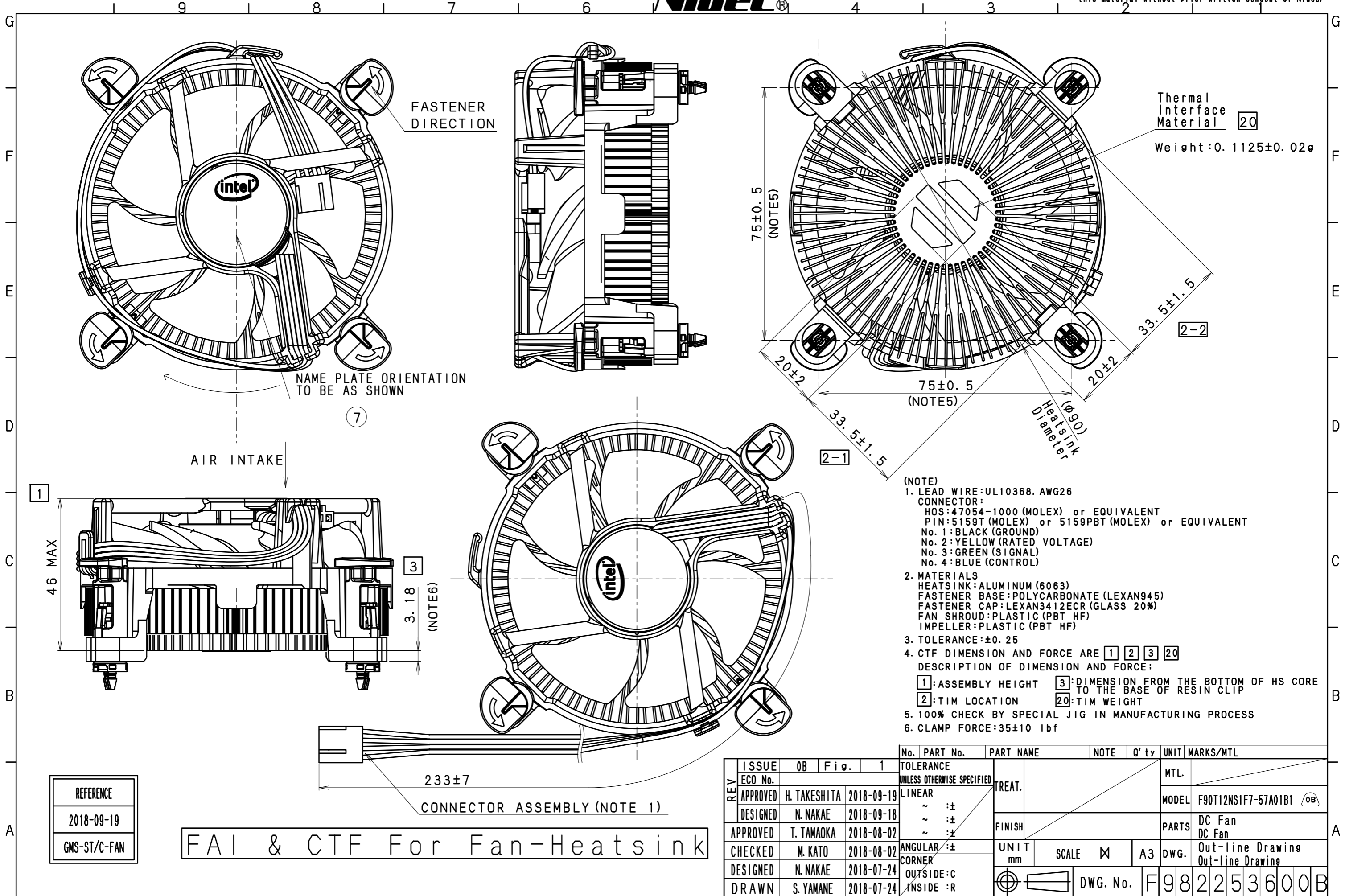
注記

- 寸法はCTFかつFAI寸法、○寸法はFAI寸法を表す。
- ヒートシンクファンのCTF寸法もしくはFAI寸法測定時には3981544900*に記載されている内容に従うこと。
- CTF寸法測定時には本図面1枚目のリスク区分に注意すること。
- 毎月の測定結果はCTF Reportとして記録管理すること。
- 測定器略号は以下の通りとする。

CMM: 3次元測定器 LC: ロードセル
 HG: ハイトゲージ ECB: 電子天秤
 DN: デジタルノギス
 DI: デジタルインジケータ
 JIG: 治具

REFERENCE
2018-09-19
GMS-ST/C-FAN

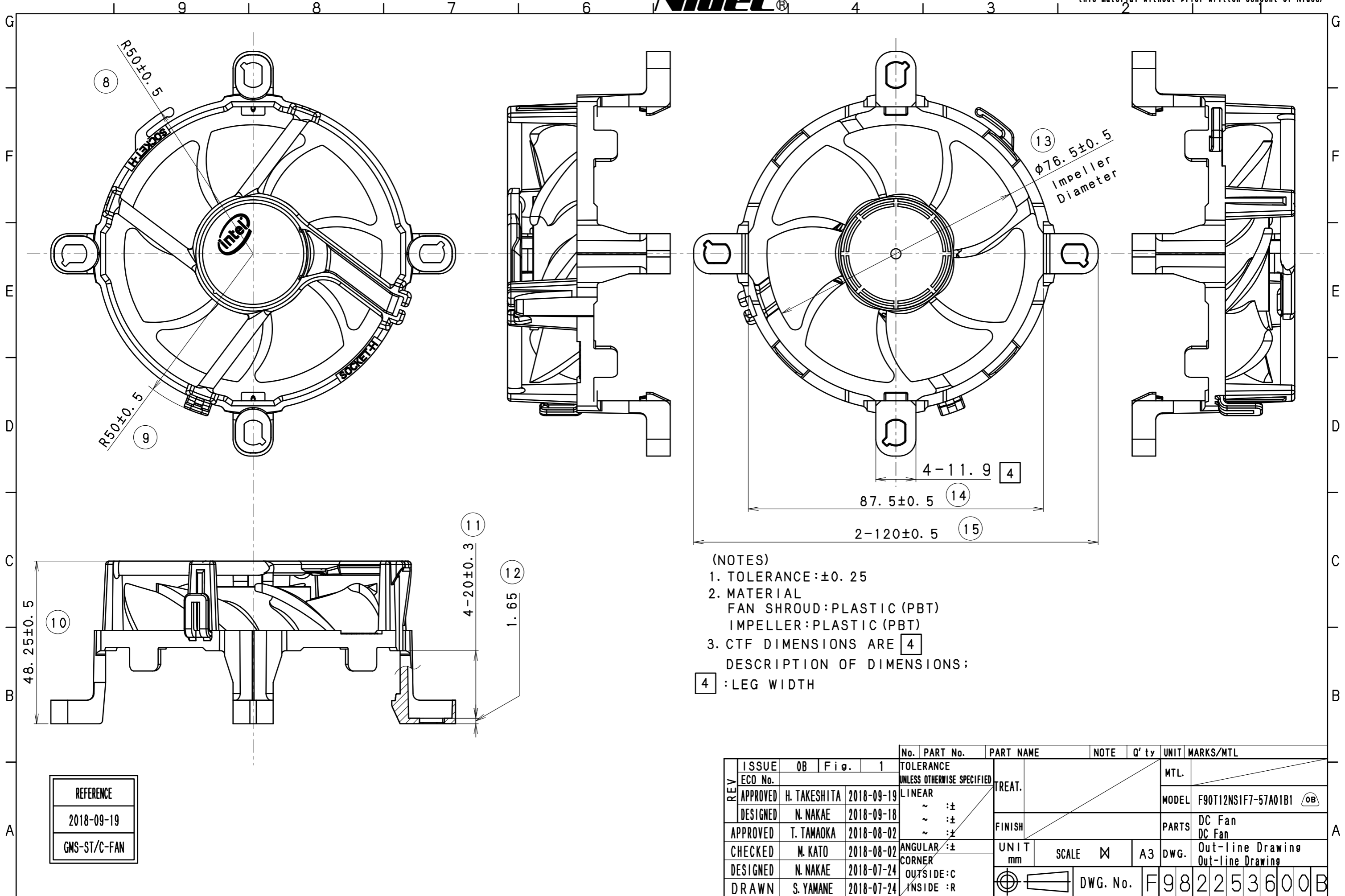
No.	PART No.	PART NAME	NOTE	Q'ty	UNIT	MARKS/MTL
ISSUE	08	Fig. 1	TOLERANCE			
ECO No.			UNLESS OTHERWISE SPECIFIED			MTL.
APPROVED	H. TAKESHITA	2018-09-19	LINEAR			MODEL
DESIGNED	N. NAKAE	2018-09-18	~ 注			F90T12NS1F7-57A01B1 (OB)
APPROVED	T. TAMAOKA	2018-08-02	~ 注			PARTS
CHECKED	M. KATO	2018-08-02	ANGULAR 注			DC Fan
DESIGNED	N. NAKAE	2018-07-24	CORNER			DC Fan
DRAWN	S. YAMANE	2018-07-24	OUTSIDE:C INSIDE:R			DWG.
			UNIT	SCALE	A3	Out-line Drawing
			mm	☒		Out-line Drawing
				DWG. No.	F982253600B	



- (NOTE)
- LEAD WIRE: UL10368, AWG26
CONNECTOR:
HOS: 47054-1000 (MOLEX) or EQUIVALENT
PIN: 5159T (MOLEX) or 5159PBT (MOLEX) or EQUIVALENT
No. 1: BLACK (GROUND)
No. 2: YELLOW (RATED VOLTAGE)
No. 3: GREEN (SIGNAL)
No. 4: BLUE (CONTROL)
 - MATERIALS
HEATSINK: ALUMINUM (6063)
FASTENER BASE: POLYCARBONATE (LEXAN945)
FASTENER CAP: LEXAN3412ECR (GLASS 20%)
FAN SHROUD: PLASTIC (PBT HF)
IMPELLER: PLASTIC (PBT HF)
 - TOLERANCE: ±0.25
 - CTF DIMENSION AND FORCE ARE [1] [2] [3] [20]
DESCRIPTION OF DIMENSION AND FORCE:
[1]: ASSEMBLY HEIGHT [3]: DIMENSION FROM THE BOTTOM OF HS CORE TO THE BASE OF RESIN CLIP
[2]: TIM LOCATION [20]: TIM WEIGHT
 - 100% CHECK BY SPECIAL JIG IN MANUFACTURING PROCESS
 - CLAMP FORCE: 35±10 lbf

REFERENCE
2018-09-19
GMS-ST/C-FAN

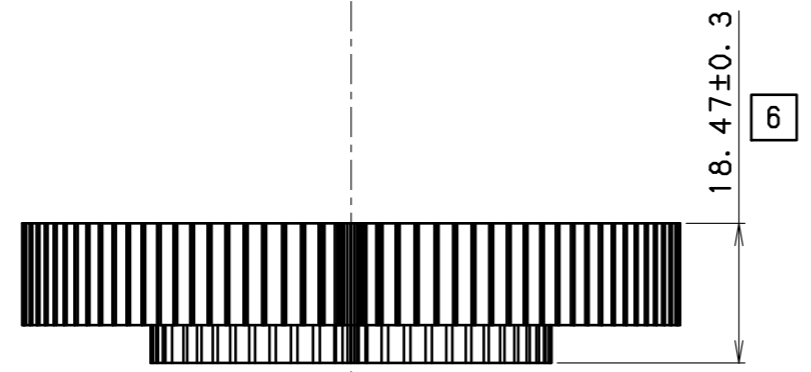
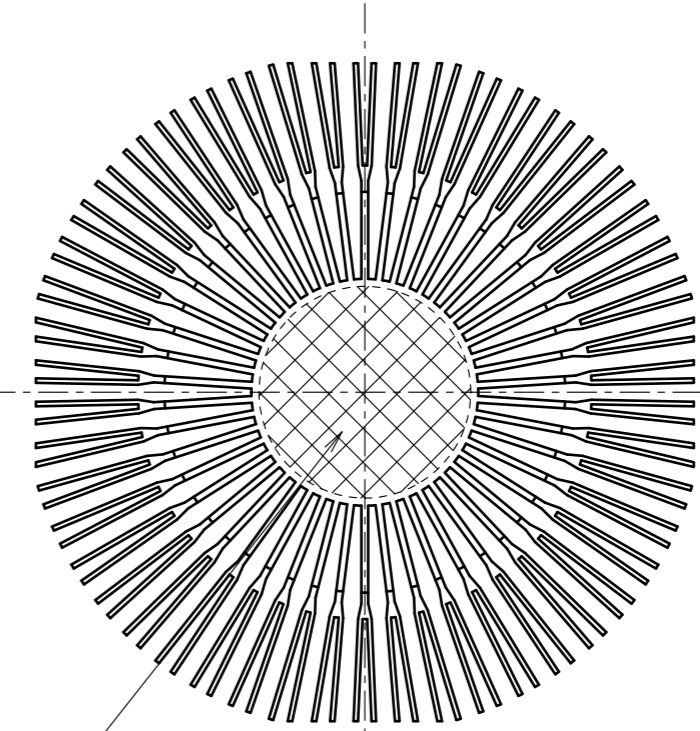
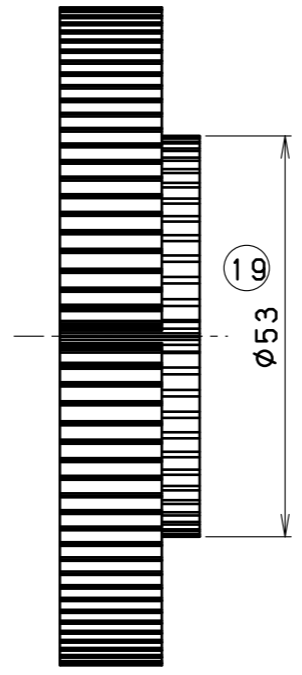
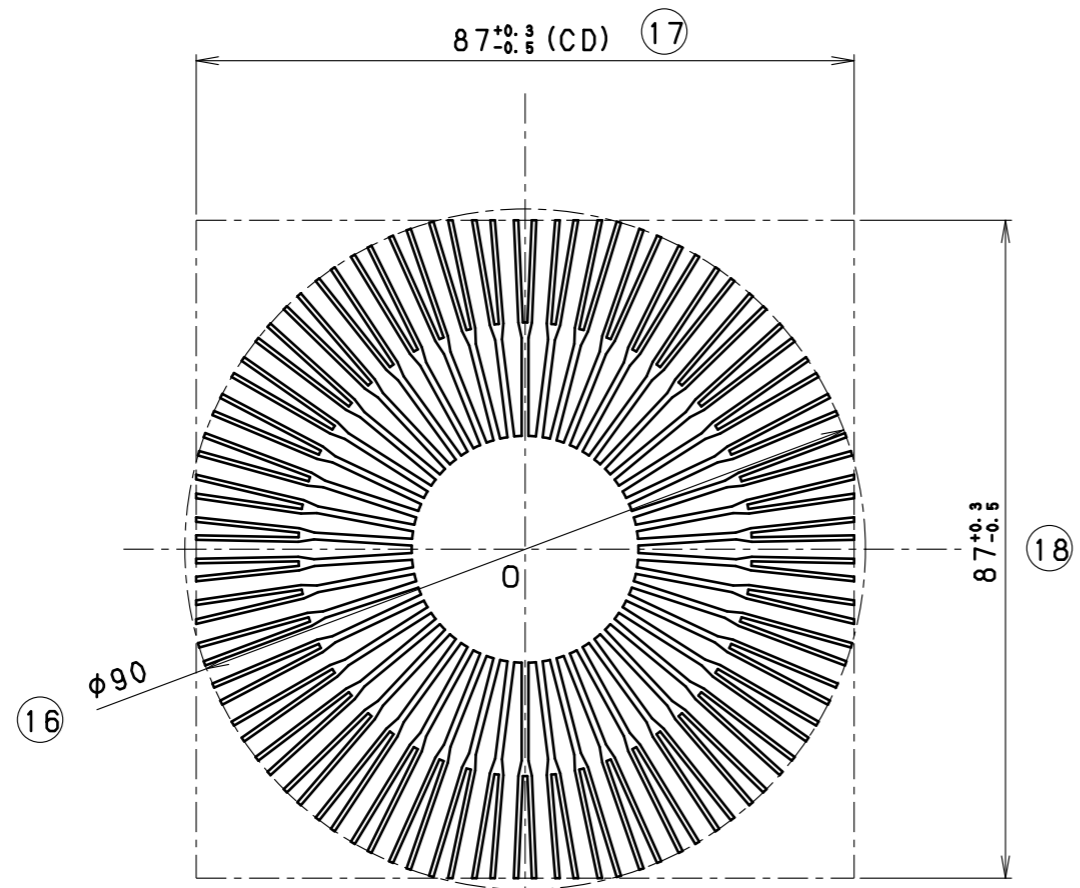
REV	ISSUE	ECO No.	DESIGNED	APPROVED	CHECKED	DESIGNED	DRAWN	No.	PART No.	PART NAME	NOTE	Q'ty	UNIT	MARKS/MTL
1	OB	Fig. 1												
										TOLERANCE UNLESS OTHERWISE SPECIFIED				MTL.
										LINEAR				MODEL F90T12NS1F7-57A01B1 (OB)
										~ ±				PARTS DC Fan
										~ ±				DC Fan
										~ ±				
										ANGULAR ±			UNIT mm	
										CORNER			SCALE	
										OUTSIDE: C			A3	DWG. Out-line Drawing
										INSIDE: R				Out-line Drawing
													DWG. No.	F982253600B



- (NOTES)
1. TOLERANCE : ± 0.25
 2. MATERIAL
FAN SHROUD : PLASTIC (PBT)
IMPELLER : PLASTIC (PBT)
 3. CTF DIMENSIONS ARE 4
- DESCRIPTION OF DIMENSIONS:
4 : LEG WIDTH

REFERENCE
2018-09-19
GMS-ST/C-FAN

REV	ISSUE	OB	Fig.	1	No.	PART No.	PART NAME	NOTE	Q'ty	UNIT	MARKS/MTL
	ISSUE	OB	Fig.	1							
	ECO No.										MTL.
	APPROVED	H. TAKESHITA	2018-09-19				TREAT.				MODEL
	DESIGNED	N. NAKAE	2018-09-18								F90T12NS1F7-57A01B1 (OB)
	APPROVED	T. TAMAOKA	2018-08-02				FINISH				PARTS
	CHECKED	M. KATO	2018-08-02								DC Fan
	DESIGNED	N. NAKAE	2018-07-24								DC Fan
	DRAWN	S. YAMANE	2018-07-24				UNIT	SCALE	A3	DWG.	Out-line Drawing
							mm	\times			Out-line Drawing
										DWG. No.	F982253600B
											3 OF 5 SHEETS



- (NOTE)
- TOLERANCE : ±0.5
 - MATERIALS
HEATSINK : ALMINUM (6063)
 - CTF DIMENSION IS 5
- DESCRIPTION OF DIMENSION:
- 5 : HS BASE FLATNESS
 - 6 : HS HEIGHT

REFERENCE
2018-09-19
GMS-ST/C-FAN

REV	ISSUE	OB	Fig.	1	No.	PART No.	PART NAME	NOTE	Q'ty	UNIT	MARKS/MTL	
	ISSUE	OB	Fig.	1	TOLERANCE						MTL.	
	ECO No.				UNLESS OTHERWISE SPECIFIED						MODEL	
	APPROVED	H. TAKESHITA	2018-09-19		LINEAR						F90T12NS1F7-57A01B1 (OB)	
	DESIGNED	N. NAKAE	2018-09-18		~ ±						PARTS	
	APPROVED	T. TAMAOKA	2018-08-02		~ ±						DC Fan	
	CHECKED	M. KATO	2018-08-02		~ ±						DC Fan	
	DESIGNED	N. NAKAE	2018-07-24		ANGULAR ±					UNIT	DWG.	
	DRAWN	S. YAMANE	2018-07-24		CORNER					mm	SCALE	
					OUTSIDE : C					∞	A3	Out-line Drawing
					INSIDE : R							Out-line Drawing
					DWG. No.							
					F982253600B							

FHS SPECIFICATION

FAN TYPE	AXIAL FAN
MASS	210g (NOMINAL)
OPERATING VOLTAGE	10.8V TO 13.2V
CURRENT	0.14A (NOMINAL)
SPEED	RATED SPEED: 3000MIN ⁻¹ (NOMINAL)
	Minimum SPEED: 1000MIN ⁻¹ (AT LOW PWM)
SOUND (AT SOUND POWER)	AT RATED SPEED: 4.5BA (NOMINAL)
OPERATING TEMPERATURE RANGE	0℃ TO 70℃
FAN PROTECTION	CURRENT LIMIT PROTECTION

REVISION TABLE

REV.	PAGE	DISCRIPTION	DATE
00	-	CREATED	7/24/18
0A	1	CORRECTION OF ERROR	8/ 3/18
0B	1-5	CHANGED MODEL	9/18/18

REFERENCE
2018-09-19
GMS-ST/C-FAN

No.	PART No.	PART NAME	NOTE	Q'ty	UNIT	MARKS/MTL
REV	ISSUE	0B	Fig.	1	TOLERANCE	UNLESS OTHERWISE SPECIFIED
	ECO No.				LINEAR	TREAT.
	APPROVED	H. TAKESHITA	2018-09-19		~ :±	MTL.
	DESIGNED	N. NAKAE	2018-09-18		~ :±	MODEL
	APPROVED	T. TAMAOKA	2018-08-02		~ :±	PARTS
	CHECKED	M. KATO	2018-08-02		ANGULAR :±	DC Fan
	DESIGNED	N. NAKAE	2018-07-24		CORNER	DC Fan
	DRAWN	S. YAMANE	2018-07-24		OUTSIDE : C	DWG.
					INSIDE : R	Out-line Drawing
					UNIT	Out-line Drawing
					mm	
					SCALE	∞
					A3	
					DWG. No.	F982253600B