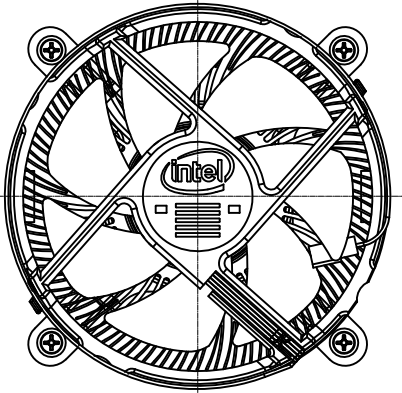


1 2 3 4



FAN HEATSINK ASSEMBLY SPECIFICATION	
FAN TYPE	LINERLY VARIABLE, DC
MASS	455 GRAMS
SOUND LEVEL	5.0 BA @ 3400 RPM NOM.

A

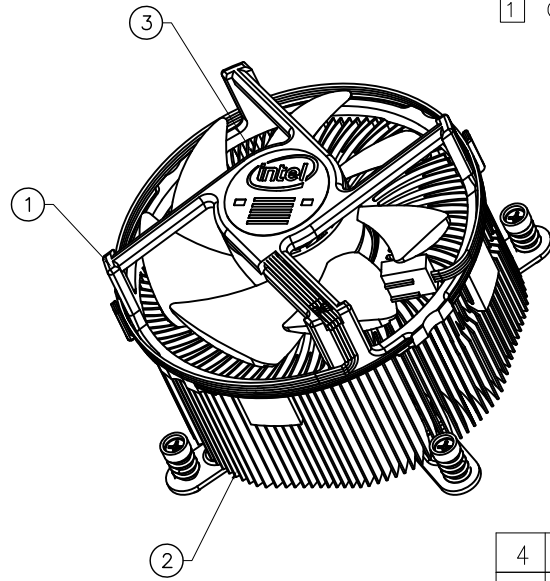
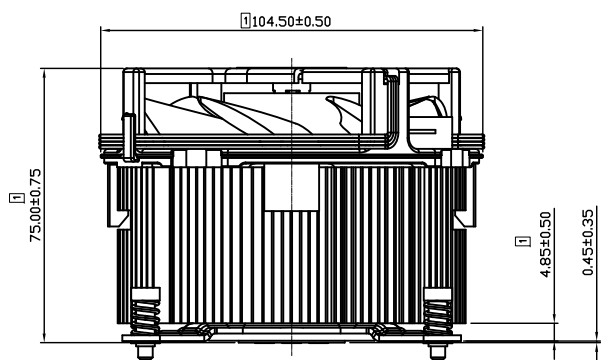
A

NOTE

① CRITICAL TO FUNCTION DIMENSION.

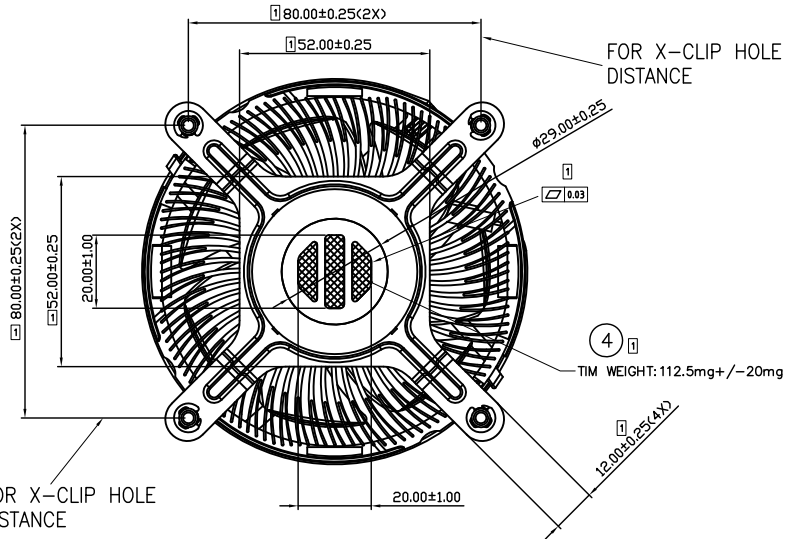
B

B



C

C



Part	Description	Material	Qty	Remark
4	TIM	TC-5630	1	DTC-EAD07-03
3	Lable	---	1	---
2	HeatSink ASSY	---	1	DTC-EAD07-02
1	Fan ASSY.	---	1	DTC-EAD07-01

<b>台達電子工業股份有限公司</b> <b>DELTA ELECTRONICS, INC.</b>		Drawn: Charles Chen Checked: Alex Hsia Approved: Alex Hsia	
THESE DRAWINGS AND SPECIFICATIONS ARE THE PROPERTY OF DELTA ELECTRONICS, INC. AND SHALL NOT BE REPRODUCED OR USED AS THE BASIS FOR THE MANUFACTURE OR SELL OF APPARATUSSES OR DEVICES WITHOUT PERMISSION.			
DIMENSIONAL TOLERANCES ( ) (V) ( ) <30 ±0.25 DECIMALS UP~100 ±0.2 250~300 ±0.4 UP~600 ±1.5 >30~100 ±0.35 X ±1.0 100~150 ±0.25 300~350 ±0.45 600~900 ±2.4 >100~300 ±0.5 XX ±0.50 150~200 ±0.3 350~400 ±0.5 900~OVER ±3.1 ABOVE 300 ±0.6 XXX ±0.25 200~250 ±0.35		Holes : ±0.05 ANGLES : ±0.5°  <b>A3</b> SIZE	
SCALE	1 : 1	UNIT	mm USED ON COOLER
PART NO.: DTC-EAD07		REV. 00	
SHEET 1 OF 1			

1 2 3 4

1

2

3

4

A

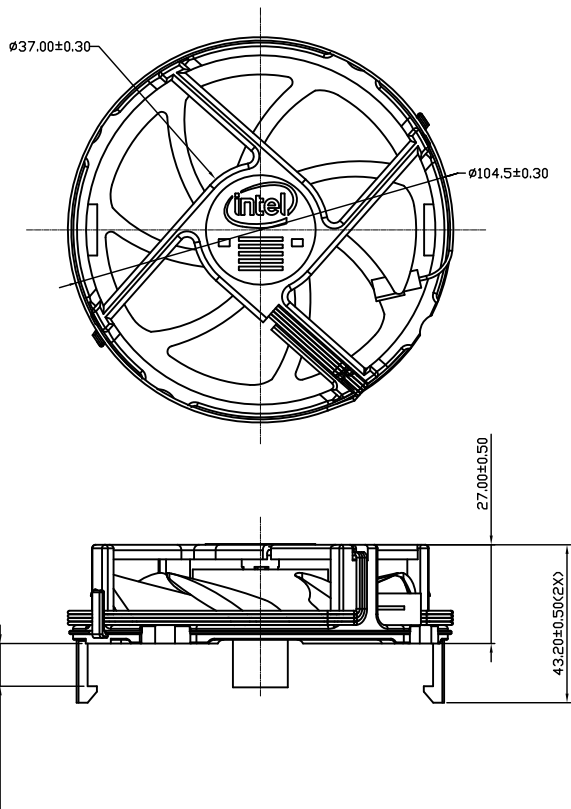
A

B

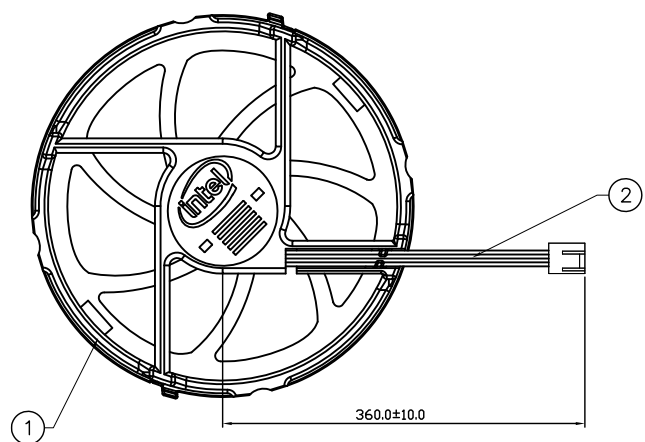
B

C

C



FAN SPECIFICATION	
FAN TYPE	LINEARLY VARIABLE, DC BRUSHLESS MOTOR
OPERATING VOLTAGE	10.8 - 13.2 VDC
INPUT CURRENT	0.24 TYP. (MAX: 0.6) A
INPUT POWER	2.88 TYP. (MAX: 7.2) W
ROTATION SPEED	3400 RPM ± 10%
OPERATING TEMPERATURE	0°C TO +70°C
OPERATING HUMIDITY	85% RELATIVE HUMIDITY @ 55°C
PROTECTION	LOCKED ROTOR, POLARITY
BEARING SYSTEM	SUPERFLO BEARING



NOTE

- 1. IMPELLER MATERIAL - PLASTIC, CLEAR, UL94V-0, PBT GLASS 30%.
- 2. CRITICAL TO FUNCTION DIMENSION.

Part	Description	Material	Qty	Remark
2	CABLE ASSY'S	---	1	DTC-EAD07-01/02
1	SHROUD	PBT	1	DTC-EAD07-01/01

<b>台達電子工業股份有限公司</b> <b>DELTA ELECTRONICS, INC.</b>		Drawn: Reek.Li Checked: Charles Chen Approved: Alex Hsia	
THESE DRAWINGS AND SPECIFICATIONS ARE THE PROPERTY OF DELTA ELECTRONICS, INC. AND SHALL NOT BE REPRODUCED OR USED AS THE BASIS FOR THE MANUFACTURE OR SELL OF APPARATUS OR DEVICES WITHOUT PERMISSION.			
<b>DIMENSIONAL TOLERANCES</b> ( ) (V) ( ) <30    ±0.25    DECIMALS    UP~100 ±0.2    250~300 ±0.4    UP~600    ±1.5 >30~100 ±0.35    X    ±0.50    100~150 ±0.25    300~350 ±0.45    600~800    ±2.4 >100~300 ±0.5    X.X   ±0.20    150~200 ±0.3    350~400 ±0.5    900~OVER ±3.1 ABOVE 300 ±0.6    X.XX ±0.10    200~250 ±0.35		<b>THIRD ANGLE PROJECTION</b> 	
<b>SCALE</b> 1 : 1 <b>UNIT</b> mm <b>USED ON</b> COOLER		<b>DESCRIPTION:</b> FAN ASSY. (H17656-001_XP03) <b>PART NO.:</b> DTC-EAD07-01 <b>REV.</b> 00	
<b>SIZE</b> A3		<b>SHEET</b> 1 OF 1	

1

2

3

4

1

2

3

4

A

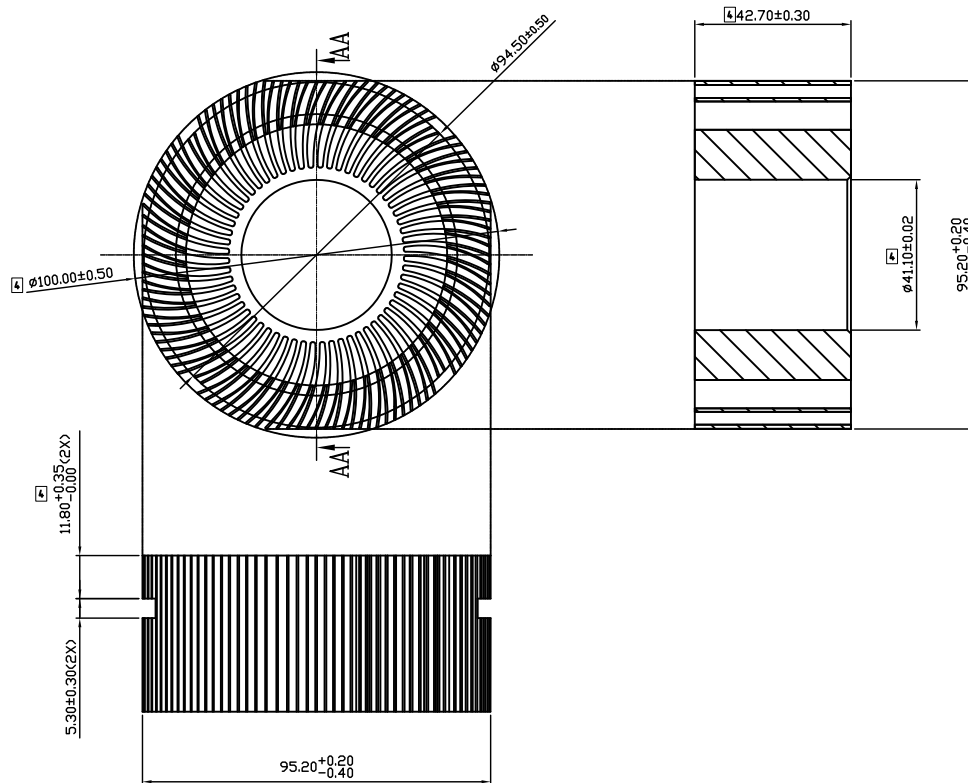
A

B

B

C

C



NOTE

- 1. MATERIAL : AL A6063 T5, FINISH : NONE
  - 2. UNLESS OTHERWISE SPECIFIED – ALL ROUNDS & FILLETS R0.1, AND BURRS & SHARP EDGES TO BE WITHIN 0.1.
  - 3. APPEARANCE OF SURFACES TO BE UNIFORM, AND FREE OF DUST, METAL FLAKES, ADHESIVES, OIL, BLEMISHES AND SCRATCHES.
- ☐ CRITICAL TO FUNCTION DIMENSION.

台達電子工業股份有限公司 DELTA ELECTRONICS, INC.		Drawn: Reek.Li	
		Checked: Charles Chen	
THESE DRAWINGS AND SPECIFICATIONS ARE THE PROPERTY OF DELTA ELECTRONICS, INC. AND SHALL NOT BE REPRODUCED OR USED AS THE BASIS FOR THE MANUFACTURE OR SELL OF APPARATUSSES OR DEVICES WITHOUT PERMISSION.		Approved: Alex Hsia	
		DESCRIPTION: HEATSINK	
DIMENSIONAL TOLERANCES ( ) (V) ( ) ( ) <30 :±0.25 DECIMALS UP~100 :±0.2 250~300 :±0.4 UP~600 :±1.5 >30~100 :±0.35 X :±1.00 100~150 :±0.25 300~350 :±0.45 600~800 :±2.4 >100~300 :±0.5 X.X :±0.50 150~200 :±0.3 350~400 :±0.5 900~OVER :±3.1 ABOVE 300 :±0.6 X.XX :±0.25 200~250 :±0.35		HOLES : ±0.05 ANGLES : ±0.5° THIRD ANGLE PROJECTION	
SCALE 1 : 1 UNIT mm USED ON COOLER		A3 SIZE	
PART NO.: DTC-EAD07-02/01		REV. 00	
SHEET 2 OF 8			

1

2

3

4

1

2

3

4

A

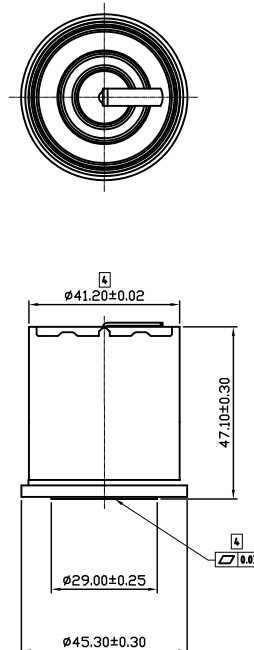
A

B

B

C



C



NOTE

1. MATERIAL : CU1100, FINISH : NONE
2. UNLESS OTHERWISE SPECIFIED – ALL ROUNDS & FILLETS R0.1, AND BURRS & SHARP EDGES TO BE WITHIN 0.1.
3. APPEARANCE OF SURFACES TO BE UNIFORM, AND FREE OF DUST, METAL FLAKES, ADHESIVES, OIL, BLEMISHES AND SCRATCHES.

 CRITICAL TO FUNCTION DIMENSION.

 <b>台達電子工業股份有限公司</b> <b>DELTA ELECTRONICS, INC.</b>		Drawn: Reek.Li	
		Checked: Charles Chen	
THESE DRAWINGS AND SPECIFICATIONS ARE THE PROPERTY OF DELTA ELECTRONICS, INC. AND SHALL NOT BE REPRODUCED OR USED AS THE BASIS FOR THE MANUFACTURE OR SELL OF APPARATUSSES OR DEVICES WITHOUT PERMISSION.		Approved: Alex Hsia	
<b>DIMENSIONAL TOLERANCES</b> ( ) (V) ( ) ( ) <30 :±0.25    DECIMALS    UP~100 :±0.2    250~300 :±0.4    UP~600 :±1.5 >30~100 :±0.35    X :±1.00    100~150 :±0.25    300~350 :±0.45    600~900 :±2.4 >100~300 :±0.5    X.X :±0.50    150~200 :±0.3    350~400 :±0.5    900~OVER :±3.1 ABOVE 300 :±0.6    X.XX :±0.25    200~250 :±0.35		HOLES : ±0.06    ANGLES : ±0.5° 	
SCALE 1 : 1    UNIT mm    USED ON COOLER		DESCRIPTION: Heat column PART NO.: DTC-EAD07-02/02    REV. 00 SHEET 3 OF 8	

1

2

3

4

1

2

3

4

A

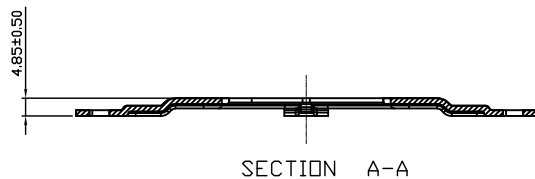
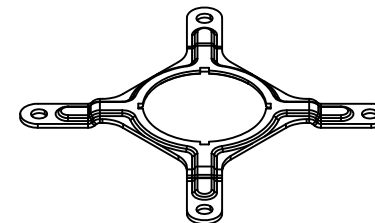
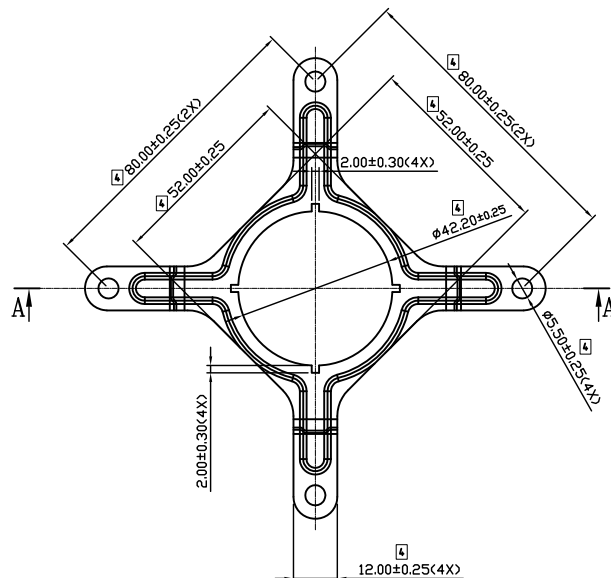
A

B

B

C

C



NOTE

- MATERIAL : S50C, FINISH : NICKEL PLATING
- UNLESS OTHERWISE SPECIFIED - ALL ROUNDS & FILLETS R0.1, AND BURRS & SHARP EDGES TO BE WITHIN 0.1.
- APPEARANCE OF SURFACES TO BE UNIFORM, AND FREE OF DUST, METAL FLAKES, ADHESIVES, OIL, BLEMISHES AND SCRATCHES.

☐ CRITICAL TO FUNCTION DIMENSION.

台達電子工業股份有限公司 DELTA ELECTRONICS, INC.		Drawn: Reek.Li Checked: Charles Chen Approved: Alex Hsia	
THESE DRAWINGS AND SPECIFICATIONS ARE THE PROPERTY OF DELTA ELECTRONICS, INC. AND SHALL NOT BE REPRODUCED OR USED AS THE BASIS FOR THE MANUFACTURE OR SELL OF APPARATUSES OR DEVICES WITHOUT PERMISSION.			
DIMENSIONAL TOLERANCES ( ) (V) ( ) ( ) <30 :±0.25    X :±1.00    UP~100 :±0.2    250~300 :±0.4    UP~600 :±1.5 >30~100 :±0.35    X.X :±0.50    100~150 :±0.25    300~350 :±0.45    600~800 :±2.4 >100~300 :±0.5    X.XX :±0.25    150~200 :±0.3    350~400 :±0.5    900~OVER :±3.1 ABOVE 300 :±0.6    X.XX :±0.25    200~250 :±0.35		HOLES : ±0.05    ANGLES : ±0.5° THIRD ANGLE PROJECTION A3 SIZE	
SCALE	1 : 1	UNIT	mm
USED ON	COOLER		
PART NO.: DTC-EAD07-02/03		REV.	00
SHEET 4 OF 8			

1

2

3

4

1

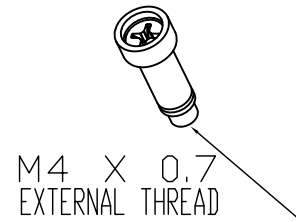
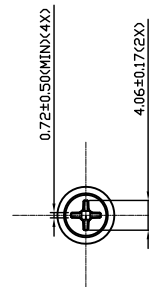
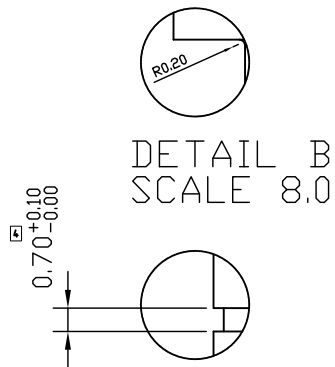
2

3

4

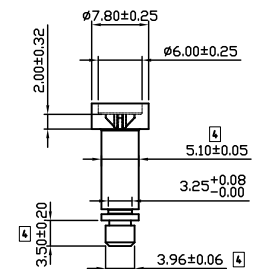
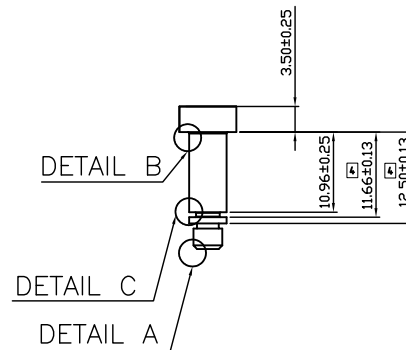
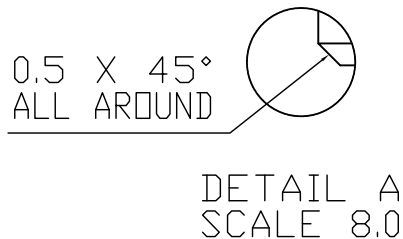
A

A



B

B



NOTE

- MATERIAL : AISI SUS304, FINISH : NONE
- UNLESS OTHERWISE SPECIFIED - ALL ROUNDS & FILLETS R0.1, AND BURRS & SHARP EDGES TO BE WITHIN 0.1.
- APPEARANCE OF SURFACES TO BE UNIFORM, AND FREE OF DUST, METAL FLAKES, ADHESIVES, OIL, BLEMISHES AND SCRATCHES.

☐ CRITICAL TO FUNCTION DIMENSION.

C

C

台達電子工業股份有限公司 DELTA ELECTRONICS, INC.		Drawn: Reek.Li	
		Checked: Charles Chen	
THESE DRAWINGS AND SPECIFICATIONS ARE THE PROPERTY OF DELTA ELECTRONICS, INC. AND SHALL NOT BE REPRODUCED OR USED AS THE BASIS FOR THE MANUFACTURE OR SELL OF APPARATUSSES OR DEVICES WITHOUT PERMISSION.		Approved: Alex Hsia	
		DESCRIPTION: Screw	
DIMENSIONAL TOLERANCES ( ) (V) ( ) ( ) <30 ±0.25 DECIMALS UP~100 ±0.2 250~300 ±0.4 UP~600 ±1.5 >30~100 ±0.35 X ±1.00 100~150 ±0.25 300~350 ±0.45 600~900 ±2.4 >100~300 ±0.5 X.X ±0.50 150~200 ±0.3 350~400 ±0.5 900~OVER ±3.1 ABOVE 300 ±0.6 X.XX ±0.25 200~250 ±0.35		HOLES : ±0.05 ANGLES : ±0.5° 	
SCALE 2 : 1	UNIT mm	USED ON COOLER	PART NO.: DTC-EAD07-02/04 SHEET 5 OF 8 REV. 00

1

2

3

4

1

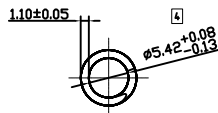
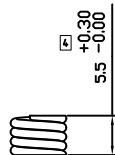
2

3

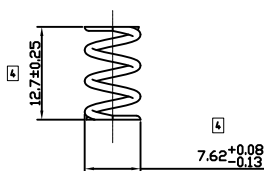
4

A

A



SOLID HIGHT



NOTE

- 1. MATERIAL : MUSIC WIRE, FINISH : COATING-ZN
- 2. UNLESS OTHERWISE SPECIFIED - ALL ROUNDS & FILLETS R0.1, AND BURRS & SHARP EDGES TO BE WITHIN 0.1.
- 3. APPEARANCE OF SURFACES TO BE UNIFORM, AND FREE OF DUST, METAL FLAKES, ADHESIVES, OIL, BLEMISHES AND SCRATCHES.

☐ CRITICAL TO FUNCTION DIMENSION.

B

B

C

C

台達電子工業股份有限公司 DELTA ELECTRONICS, INC.					Drawn: Reek.Li	
					Checked: Charles Chen	
THESE DRAWINGS AND SPECIFICATIONS ARE THE PROPERTY OF DELTA ELECTRONICS, INC. AND SHALL NOT BE REPRODUCED OR USED AS THE BASIS FOR THE MANUFACTURE OR SELL OF APPARATUS OR DEVICES WITHOUT PERMISSION.					Approved: Alex Hsia	
					DESCRIPTION: Spring	
DIMENSIONAL TOLERANCES ( ) (V) ( ) ( ) <30 ±0.25 DECIMALS UP~100 ±0.2 250~300 ±0.4 UP~600 ±1.5 >30~100 ±0.35 X ±1.00 100~150 ±0.25 300~350 ±0.45 600~800 ±2.4 >100~300 ±0.5 X.X ±0.50 150~200 ±0.3 350~400 ±0.5 900~OVER ±3.1 ABOVE 300 ±0.6 X.XX ±0.25 200~250 ±0.35					Holes : ±0.05 ANGLES : ±0.5° 	
SCALE 2 : 1 UNIT mm USED ON COOLER					PART NO.: DTC-EAD07-02/05 REV. 00 SHEET 6 OF 8	

1

2

3

4

1

2

3

4

A

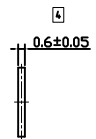
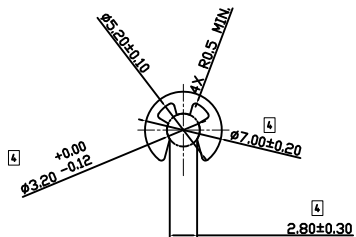
A

B

B

C




C



NOTE

- 1. MATERIAL : SPRING STEEL, FINISH : NICKEL PLATING
- 2. UNLESS OTHERWISE SPECIFIED - ALL ROUNDS & FILLETS R0.1, AND BURRS & SHARP EDGES TO BE WITHIN 0.1.
- 3. APPEARANCE OF SURFACES TO BE UNIFORM, AND FREE OF DUST, METAL FLAKES, ADHESIVES, OIL, BLEMISHES AND SCRATCHES.

☐ CRITICAL TO FUNCTION DIMENSION.

 台達電子工業股份有限公司 DELTA ELECTRONICS, INC.		Drawn: Reek.Li	
		Checked: Charles Chen	
THESE DRAWINGS AND SPECIFICATIONS ARE THE PROPERTY OF DELTA ELECTRONICS, INC. AND SHALL NOT BE REPRODUCED OR USED AS THE BASIS FOR THE MANUFACTURE OR SELL OF APPARATUSES OR DEVICES WITHOUT PERMISSION.		Approved: Alex Hsia	
		DESCRIPTION: Washer	
DIMENSIONAL TOLERANCES ( ) (V) ( ) ( ) <math><30 \pm 0.25</math>    <math><30 \pm 0.35</math>    X : ±1.00    UP~100 : ±0.2    250~300 : ±0.4    UP~600 : ±1.5 >100~100 : ±0.5    X.X : ±0.50    150~200 : ±0.3    300~350 : ±0.45    600~800 : ±2.4 ABOVE 300 : ±0.6    X.XX : ±0.25    200~250 : ±0.35    900~OVER : ±3.1		HOLES : ±0.06    ANGLES : ±0.5° 	
SCALE	3 : 1	UNIT	mm
USED ON	COOLER		
PART NO.: DTC-EAD07-02/06		REV. 00	
SHEET 7 OF 8			

1

2

3

4



1

2

3

4

A

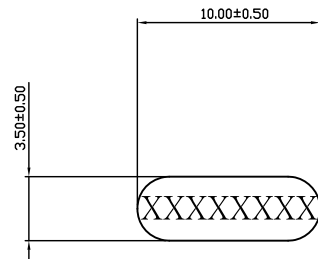
A

B

B


C

C



NOTE

- 1. MATERIAL : POLYMIND, ADHESIVE : XF-581
- 2. CRITICAL TO FUNCTION DIMENSION.

 <b>台達電子工業股份有限公司</b> <b>DELTA ELECTRONICS, INC.</b>		Drawn: Reek.Li	
		Checked: Charles Chen	
THESE DRAWINGS AND SPECIFICATIONS ARE THE PROPERTY OF DELTA ELECTRONICS, INC. AND SHALL NOT BE REPRODUCED OR USED AS THE BASIS FOR THE MANUFACTURE OR SELL OF APPARATUSSES OR DEVICES WITHOUT PERMISSION.		Approved: Alex Hsia	
<b>DIMENSIONAL TOLERANCES</b> ( ) (V) ( ) ( ) <30 :±0.25    DECIMALS    UP~100 :±0.2    250~300 :±0.4    UP~600 :±1.5 >30~100 :±0.35    X :±1.00    100~150 :±0.25    300~350 :±0.45    600~800 :±2.4 >100~300 :±0.5    X.X :±0.50    150~200 :±0.3    350~400 :±0.5    900~OVER :±3.1 ABOVE 300 :±0.6    X.XX :±0.25    200~250 :±0.35		DESCRIPTION: Datecode label	
SCALE 5 : 1    UNIT mm    USED ON COOLER		PART NO.: DTC-EAD07-02/07    REV. 00	
SIZE A3		SHEET 8 OF 8	

1

2

3

4

1

2

3

4

A

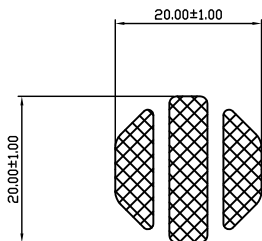
A

B



B

C

C



- NOTES: 1. THICKNESS: 0.20mm  
 2. VENDOR P/N: DOW CORNING TC-5630  
 3. COLOR: GRAY.  
 4. THERMAL CONDUCTIVITY: 4.1 W/m-°C  
 5. THERMAL CONTACT RESISTANCE: 0.06 °C-cm²/W @40psi  
 6. GROSS WEIGHT: 112.5±20 mg  
 7. VENDOR : DOW CORNING  
 8. MUST MEET DELTA'S SPEC : 10000-0162

 台達電子工業股份有限公司 DELTA ELECTRONICS, INC.		Drawn: Reek.Li	
		Checked: Charles Chen	
THESE DRAWINGS AND SPECIFICATIONS ARE THE PROPERTY OF DELTA ELECTRONICS, INC. AND SHALL NOT BE REPRODUCED OR USED AS THE BASIS FOR THE MANUFACTURE OR SELL OF APPARATUS OR DEVICES WITHOUT PERMISSION.		Approved: Alex Hsia	
DIMENSIONAL TOLERANCES ( ) (V) ( ) ( ) <30 :±0.25 DECIMALS UP~100 :±0.2 250~300 :±0.4 UP~600 :±1.5 >30~100 :±0.35 X :±0.50 100~150 :±0.25 300~350 :±0.45 600~800 :±2.4 >100~300 :±0.5 X.X :±0.30 150~200 :±0.3 350~400 :±0.5 900~OVER :±3.1 ABOVE 300 :±0.6 X.XX :±0.20 200~250 :±0.35		HOLES : ±0.06 ANGLES : ±0.5°  DESCRIPTION: THERMAL INTERFACE (D60392-001_XP01)	
SCALE	1 : 1	UNIT	mm
USED ON	COOLER	PART NO.: DTC-EAD07-03 SHEET 1 OF 1	
A3 SIZE		REV. 00	

1

2

3

4