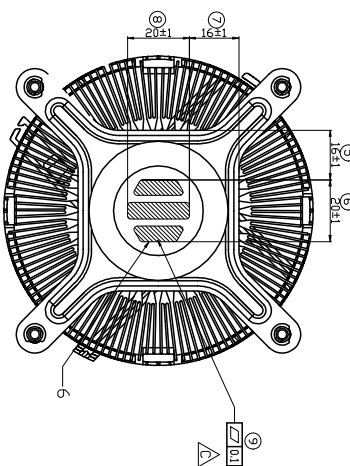
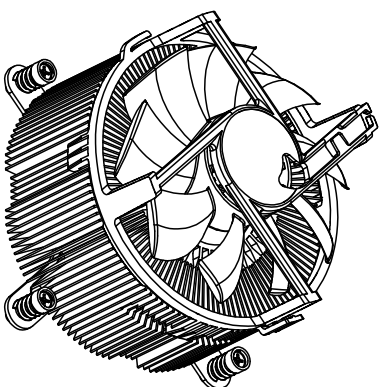
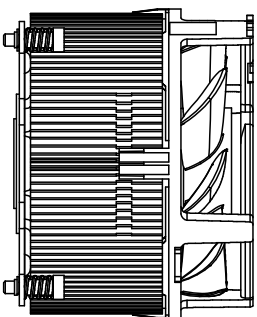
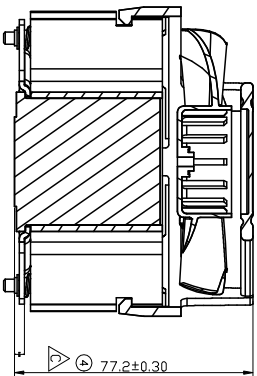
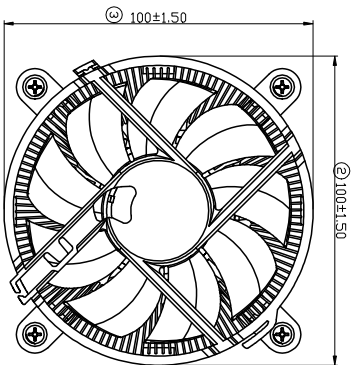


REV	DESCRIPTION	Section	Engineer	Checked	Date
A2	Revised drawings, delete the part size	A4 - B3	Leo	Zhouhh	2016.03.03



1. Clip Force : 65±10 LBF
2. It's natural round in all corners and edges that not marked with texts
3. ROHS-PRODUCT SHOULD Be ROHS COMPLIANT

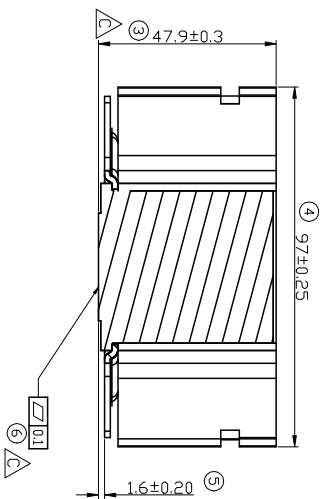
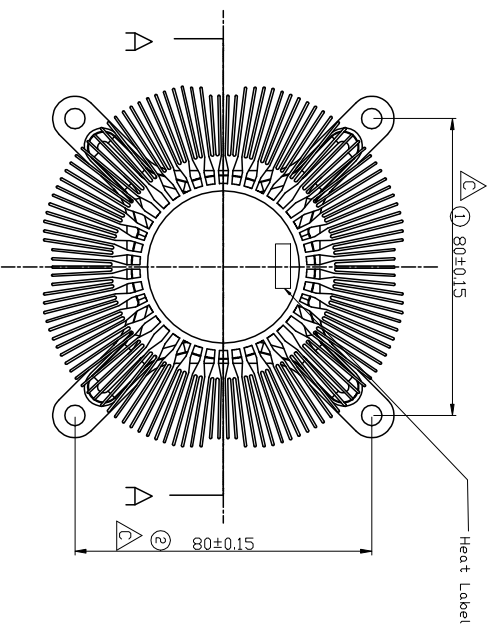
Item	Part No.	Part Name	Material	Qty	Remark
1	600027370-GP3	HS	AL+CU	1	
2	FM10025M12LPA001	Fan		1	
3	15009990-GP3	Screw	AISI1018	4	Plating-Ni
4	450012490-GP3	Spring	SWP-B	4	Plating-Ni
5	300002012-GP	E-Ring	SK7	4	Plating-Ni
6	520001250-GP3	Interface	TC-5630	0.179	T=0.15~0.22mm
7		Fan LABEL	PET	1	

DRAWN		TOL ±		General tolerances:	
Leo Peng		Range		Don't use the crossed items	
DATE	2016.03.03	0 ~ 10	0.1	0.1	0.15
ENGINEER	Leo Peng	10 ~ 30	0.15	0.2	0.25
DATE	2016.03.03	30 ~ 50	0.2	0.3	0.35
CHECKED	Zhouhh	50 ~ 100	0.25	0.4	0.5
DATE	2016.03.03	100 ~	0.3	0.5	0.6
APPROVAL	Zhouhh	Angles	1°	2°	3°
DATE	2016.03.03	Scale	1/8	Sheet-draft	Size
					A4

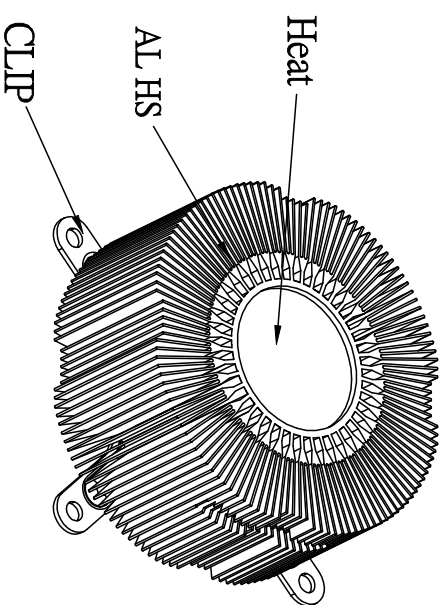
Part Name  
CDLER MASTER  
CD, LTD.

File Name  
CEL-00007-N1-HF

REV	DESCRIPTION	Section	Engineer	Checked	Date
A2	Revised drawings, delete the part size	B3、C3	Leo	Zhouhh	2016.03.03



SECTION-A-A

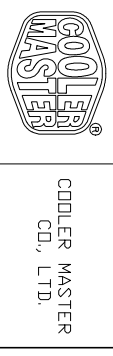


1.It's natural round in all corners and edges that not marked with texts  
 3.RoHS-PRODUCT SHOULD Be RoHS COMPLIANT

Item	Part No.	Part Name	Material	Qty	Remark
4		Heat label	PET	1	
3	450012500-GP3	CLIP	ALSI1065	1	Plating-NI
2	266000920-GP3	Heat	CI020	1	Cleaning
1	250058780-01-GP3	AL HS	AL 6063 T5	1	

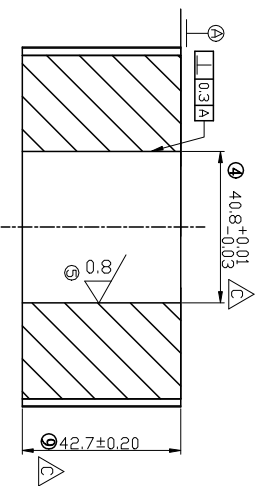
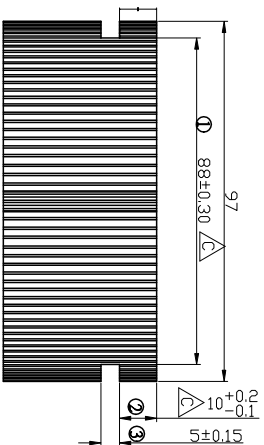
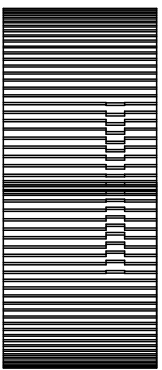
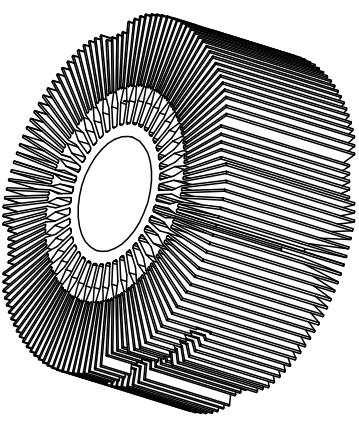
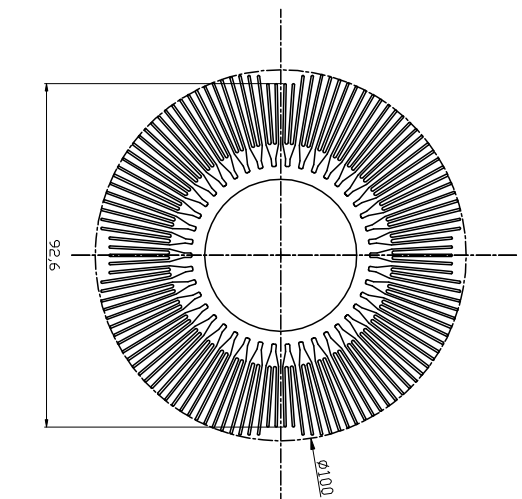
  

DRAWN		Leo Peng		TOL ±		General tolerance:		
DATE	2016.03.03	Range	0 ~ 10	0.1	0.1	0.15	0.2	
ENGINEER	Leo Peng		10 ~ 30	0.15	0.2	0.25	0.3	
DATE	2016.03.03		30 ~ 50	0.2	0.3	0.35	0.4	
CHECKED	Zhouhh		50 ~ 100	0.25	0.4	0.4	0.6	
DATE	2016.03.03		100 ~	0.3	0.5	0.6	0.8	
APPROVAL	Zhouhh	Angles	1°	2°	3°	3°	5°	
DATE	2016.03.03	Scale	Sheet-drawt					Size
			2/8					A4
File Name		10301R042-HS-A2						

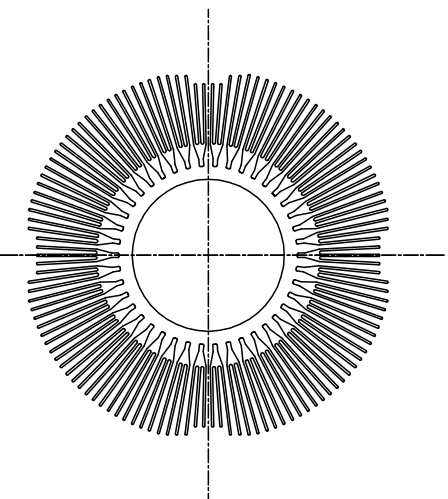


Part Name  
600027370-GP3

REV	DESCRIPTION	Section	Engineer	Checked	Date



SECTION



1. Material: Al 6063 T5
2. It's natural round in all corners and edges that not marked with texts

DRAWN		TOL ±		General tolerances:		Part Name					
DATE	Range	0 ~ 10	10 ~ 30	30 ~ 50	50 ~ 100	100 ~	Angles	Scale	Sheet-plant	Size	File Name
2014.06.10	0 ~ 10	0.1	0.15	0.2	0.3	0.4	1°	3/8	A4	10301R042-sink-01-A1	COOLER MASTER COOLER MASTER CO., LTD.
2015.08.28	10 ~ 30	0.15	0.2	0.25	0.3	0.4	2°	3/8	A4	10301R042-sink-01-A1	COOLER MASTER COOLER MASTER CO., LTD.
2015.08.28	30 ~ 50	0.2	0.3	0.35	0.4	0.6	3°	3/8	A4	10301R042-sink-01-A1	COOLER MASTER COOLER MASTER CO., LTD.
2015.08.28	50 ~ 100	0.25	0.4	0.4	0.6	0.8	5°	3/8	A4	10301R042-sink-01-A1	COOLER MASTER COOLER MASTER CO., LTD.
2015.08.28	100 ~	0.3	0.5	0.6	0.8	1.0	5°	3/8	A4	10301R042-sink-01-A1	COOLER MASTER COOLER MASTER CO., LTD.

D

C

B

A

4

4

3

3

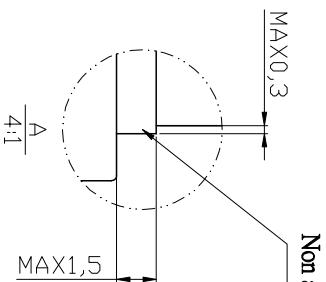
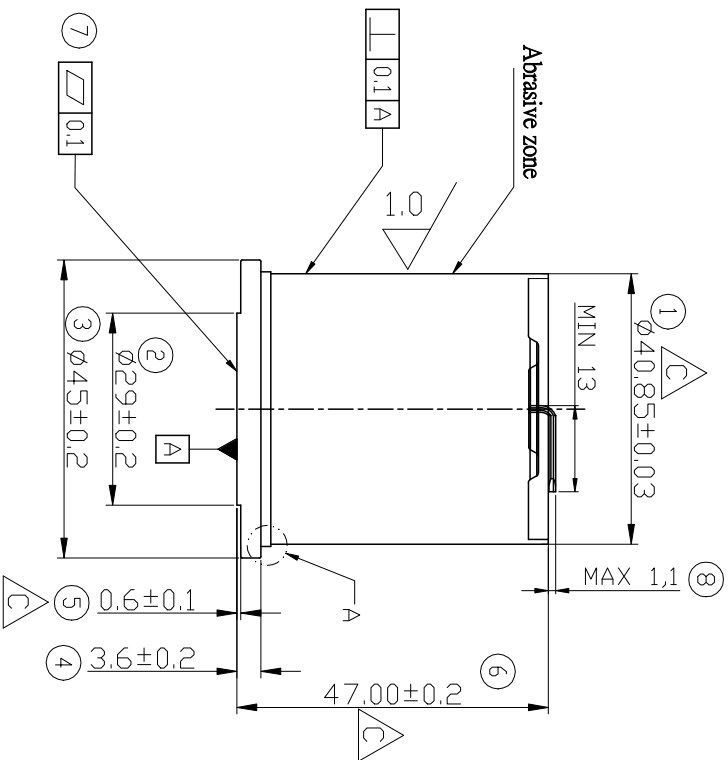
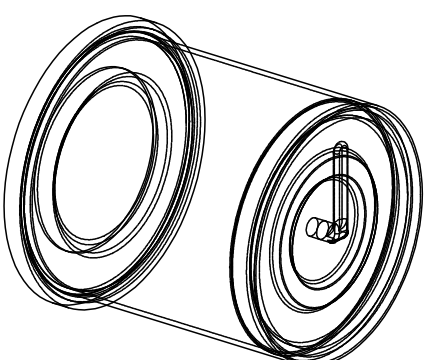
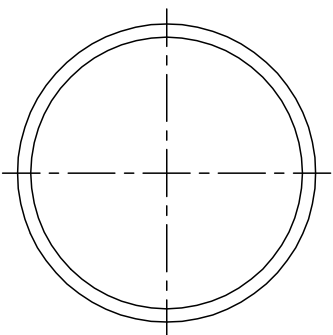
2

2

1

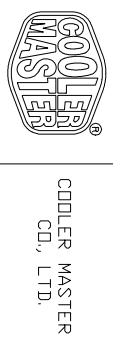
1

REV	DESCRIPTION	Section	Engineer	Checked	Date
A2	Delete 30±0.2, increased by 0.6±0.1	D3	Leo	Zhouhh	2016.03.03



1. Material: Cu C1020  
2. Finish: Plating Ni

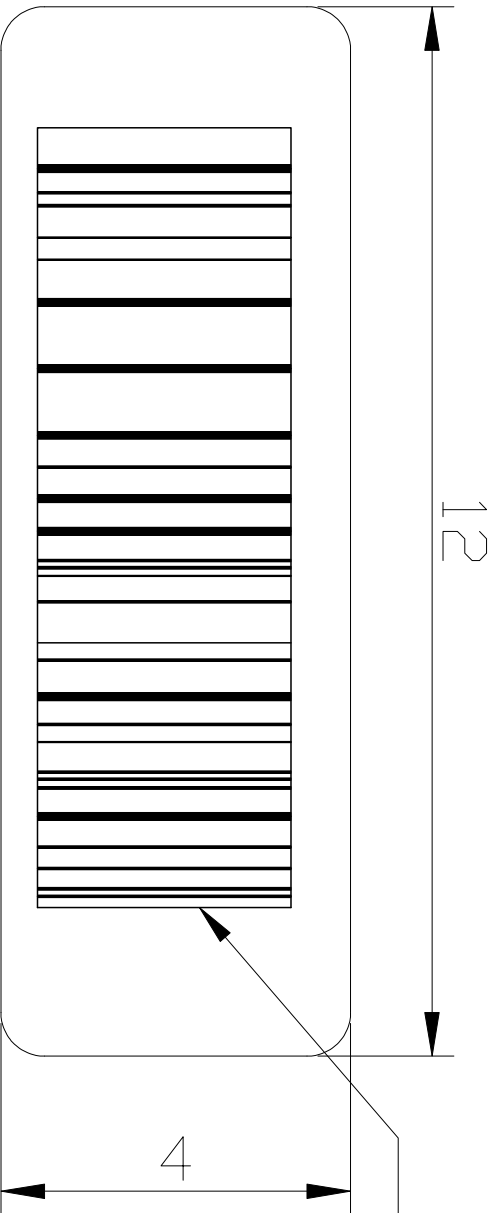
DATE	DESCRIPTION	SCALE	SIZE	FILE NAME
2016.03.03	Leo Peng	4/8	A4	10301R042-Heat-01-A2
2016.03.03	Leo Peng			
2016.03.03	Leo Peng			
2016.03.03	Zhouhh			
2016.03.03	Zhouhh			



4 3 2 1

D C B A

REV	DESCRIPTION	Section	Engineer	Checked	Date



Code 128  
Commodity Tracking Number

- NOTE:**
1. Materia : PET
  2. Thickness : 0.1± 0.01mm
  3. Visual : Don't have dirt and damage on the surface.
  4. Color : White paper Black text
  5. Bar code format : Code 128

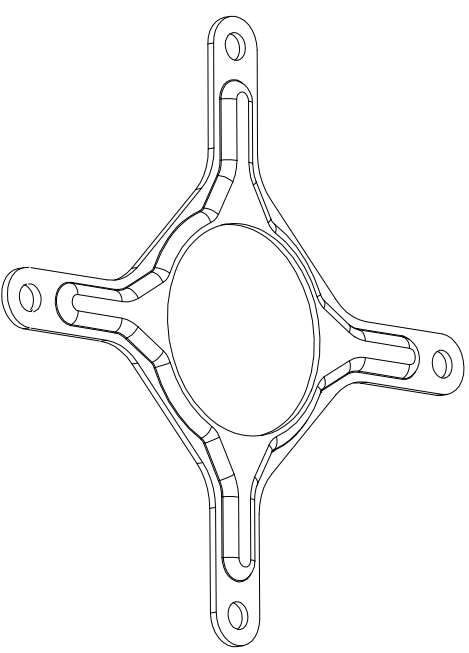
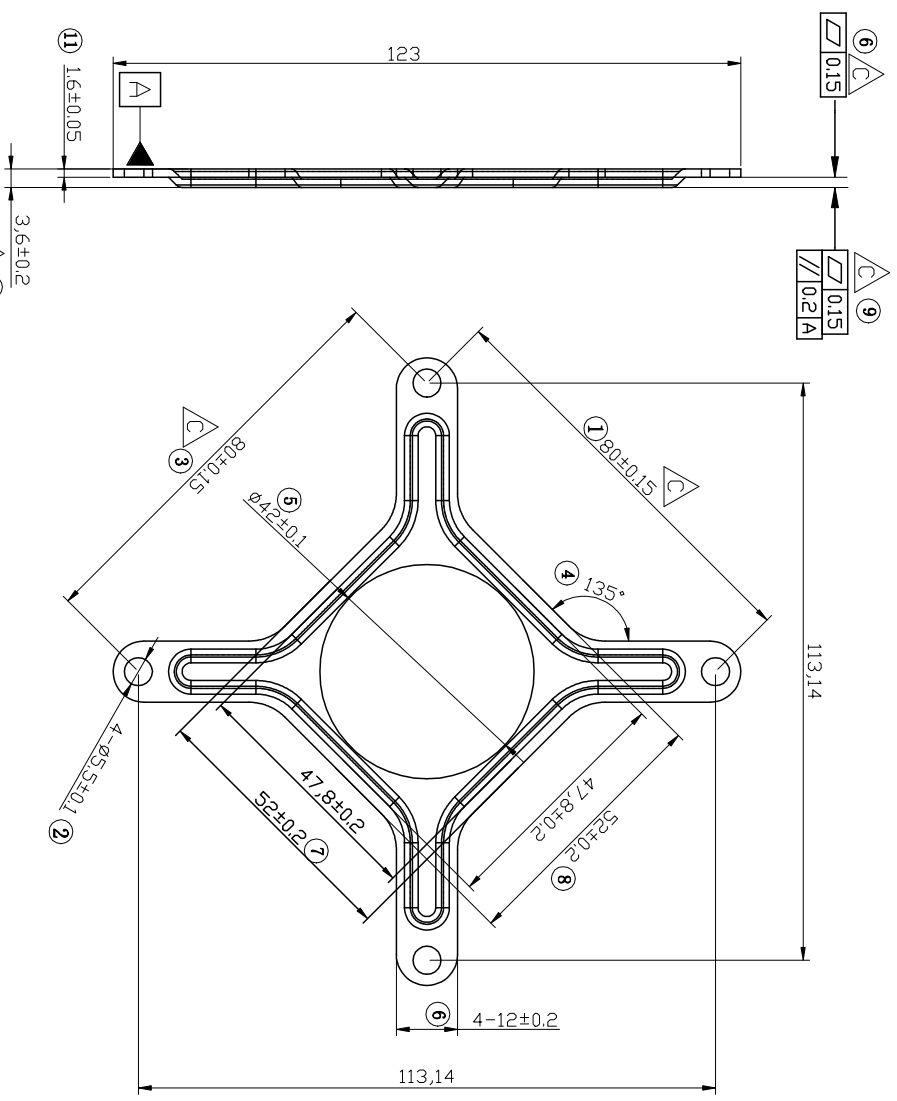
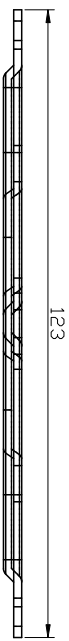
DRAWN		Leo Peng		TOL ±		General tolerances:		Part Name	
DATE	ENGINEER	Range	0 ~ 10	10 ~ 30	30 ~ 50	50 ~ 100	100 ~	Angles	Scale
2015.12.16	Leo Peng	0.1	0.15	0.2	0.3	0.4	0.6	1°	1/1
2015.12.16	Leo Peng	0.2	0.25	0.35	0.4	0.6	0.8	2°	1/1
2015.12.16	Zhouth	0.3	0.35	0.4	0.6	0.8	1.0	3°	1/1
2015.12.16	Zhouth	0.4	0.4	0.4	0.6	0.8	1.0	3°	1/1
2015.12.16	Zhouth	0.4	0.4	0.4	0.6	0.8	1.0	3°	1/1



Part Name  
Heat - LABEL

File Name  
10301R042-label-01-A1

REV	DESCRIPTION	Section	Engineer	Checked	Date
A2	[[0.2] Revised to [[0.2] A] [[0.15]	A4	Leo	Zhouhh	2016.03.03
A2	[[0.2] Revised to [[0.15]	A4	Leo	Zhouhh	2016.03.03
A2	Hole - change from 80H0.2 to 80H0.15	B3	Leo	Zhouhh	2016.03.03



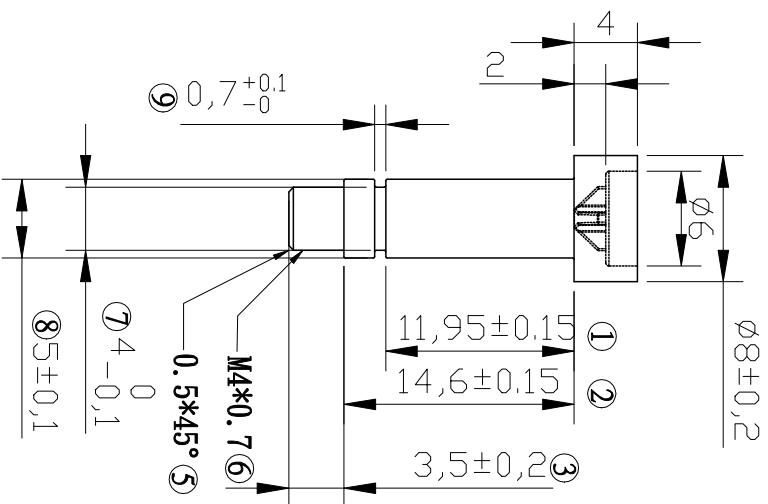
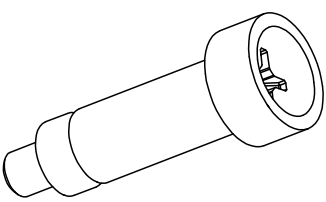
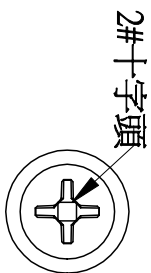
1. Material: AISI 1065
2. Finish: Plating Ni

DRAWN		TOL ±		General tolerances:		Part Name			
DATE	ENGINEER	Range	Don't use the crossed items				COOLER MASTER	COOLER MASTER CO., LTD.	
2016.03.03	Leo Peng	0 ~ 10	0.1	0.1	0.15	0.2	10301R042-Bracket-01-A2		
2016.03.03	Leo Peng	10 ~ 30	0.15	0.2	0.25	0.3	450012500-GP3		
2016.03.03	Zhouhh	30 ~ 50	0.2	0.3	0.35	0.4			
2016.03.03	Zhouhh	50 ~ 100	0.25	0.4	0.4	0.6			
2016.03.03	Zhouhh	100 ~	0.3	0.5	0.6	0.8			
APPROVAL		Angles	1°	2°	3°	3°	File Name		
DATE 2016.03.03		Scale	Sheet-drawit				Size		
			5/8	mm		A4			

4 3 2 1

D C B A

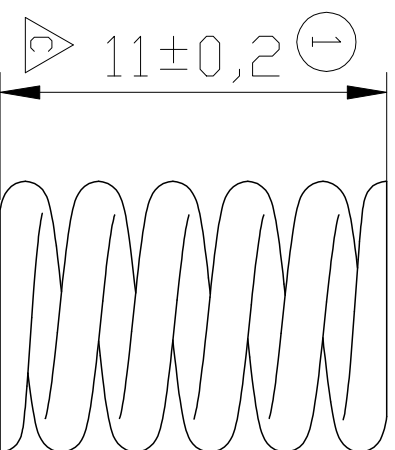
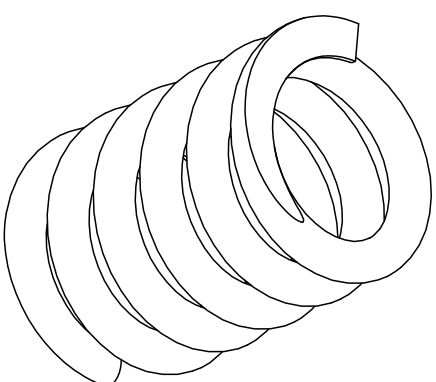
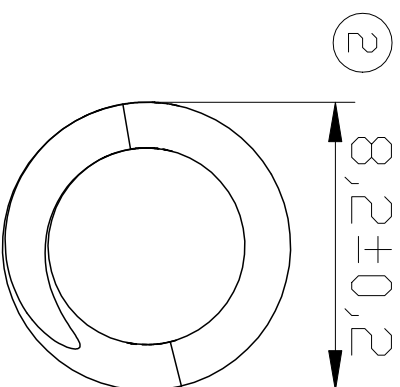
REV	DESCRIPTION	Section	Engineer	Checked	Date



1. Material: AISI 1018  
 2. Finish: Plating Ni

DRAWN		TOL ±					General tolerances:			Part Name 150039090-GP3	Cooler Master Logo	COOLER MASTER CO., LTD.
Leo Peng	Range	0 ~ 10	10 ~ 30	30 ~ 50	50 ~ 100	1°	2°	3°	5°			
DATE 2015.07.22	0.1	0.1	0.15	0.2	0.3	1°	2°	3°	5°	10301R042-SCREW-01-A1	COOLER MASTER CO., LTD.	
ENGINEER	0.2	0.25	0.3	0.4	0.6	1°	2°	3°	5°	10301R042-SCREW-01-A1		
DATE 2015.07.22	0.2	0.3	0.35	0.4	0.6	1°	2°	3°	5°	10301R042-SCREW-01-A1	COOLER MASTER CO., LTD.	
CHECKED	0.4	0.4	0.4	0.6	0.8	1°	2°	3°	5°	10301R042-SCREW-01-A1		
DATE 2015.07.22	0.4	0.4	0.4	0.6	0.8	1°	2°	3°	5°	10301R042-SCREW-01-A1	COOLER MASTER CO., LTD.	
APPROVAL	0.5	0.6	0.8	1.0	1.0	1°	2°	3°	5°	10301R042-SCREW-01-A1		
DATE 2015.07.22	0.6	0.8	1.0	1.0	1.0	1°	2°	3°	5°	10301R042-SCREW-01-A1	COOLER MASTER CO., LTD.	
	1.0	1.0	1.0	1.0	1.0	1°	2°	3°	5°	10301R042-SCREW-01-A1		

REV	DESCRIPTION	Section	Engineer	Checked	Date



- Notes:
1. Material: SWPB U1.3
  2. Effective circles: 2.5; Total circles: 4.5
  3. Spring K=4.76LBF/mm, after the heat sink assemble on the Mother Board the spring pressed total 3.5mm.
  4. Finishing: Nickel-plated
  5. Emphasis Dimension: 1 ~ X

DRAWN		Leo Peng		TOL ±		General tolerances:		Don't use the crossed items	
DATE	ENGINEER	Range	0 ~ 10	0.1	0.15	0.2	0.3	0.4	0.5
2015.07.22	Leo Peng	10 ~ 30	0.15	0.2	0.25	0.3	0.4	0.5	0.6
2015.07.22	Zhouhui	30 ~ 50	0.2	0.3	0.35	0.4	0.5	0.6	0.8
2015.07.22	Zhouhui	50 ~ 100	0.25	0.4	0.4	0.6	0.8	1.0	1.0
2015.07.22	Zhouhui	100 ~	0.3	0.5	0.6	0.8	1.0	1.0	1.0
APPROVAL		Scale	1°	2°	3°	3°	5°	Angles	
DATE 2015.07.22		Sheet	7/8	mm	mm	mm	mm	Size	
DATE 2015.07.22		Part Name	450012490-GP3		Cooler Master		CDLER MASTER CO., LTD.		File Name
DATE 2015.07.22		Part Name	10301R042-SPRING-01-A1		Cooler Master		CDLER MASTER CO., LTD.		File Name

D

C

B

A

4

4

3

3

2

2

1

1

D

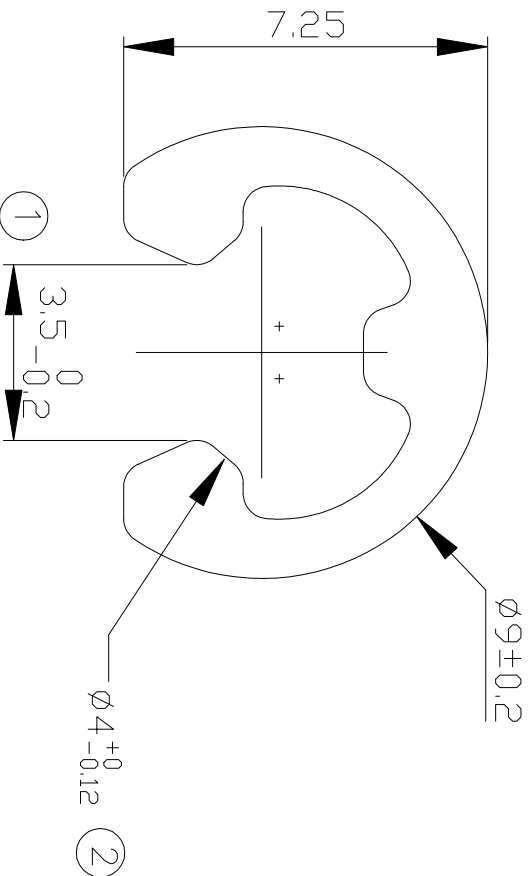
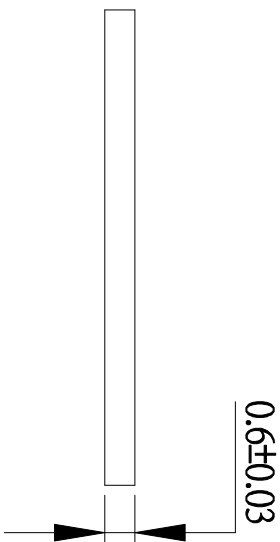
C

B

A



REV	DESCRIPTION	Section	Engineer	Checked	Date



- Notes :**
1. Material : SK5
  2. Finish: Ni-Plating

DRAWN		TOL ±					General tolerances:			Part Name		COOLER MASTER		
Leo Peng	Range	0 ~ 10	0.1	0.1	0.15	0.2	0.3	Don't use the crossed items	Scale	Sheet	Sheet	Size	File Name	CDLER MASTER
DATE 2015.07.22	ENGINEER	10 ~ 30	0.15	0.2	0.25	0.3	0.4		8/8	mm		A4	10901R042-E-ring-01-A1	CD., LTD.
DATE 2015.07.22	CHECKED	30 ~ 50	0.2	0.3	0.35	0.4	0.6						3000002012-GP	
DATE 2015.07.22	Zhouzh	50 ~ 100	0.25	0.4	0.4	0.6	0.8							
DATE 2015.07.22	APPROVAL	100 ~	0.3	0.5	0.6	0.8	1.0							
DATE 2015.07.22	Zhouzh	Angles	1°	2°	3°	3°	5°							

A  
B  
C  
D

4 3 2 1