

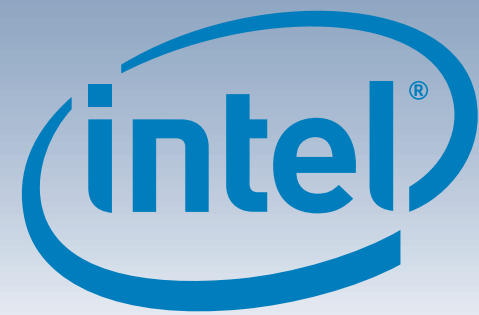
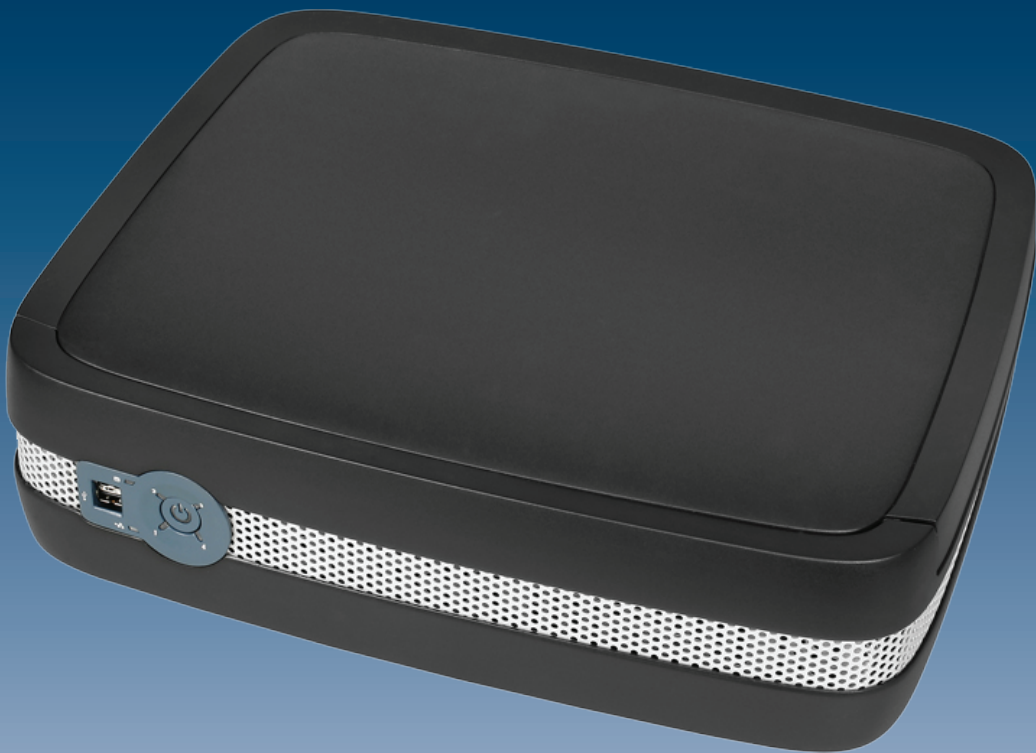
Intel® Entry Storage System SS4200-E

Quick Start User's Guide

Thank you for purchasing an Intel® Entry Storage System SS4200-E. This document describes how to set up the Intel® Entry Storage System SS4200-E, install hard drives, turn on the system, and complete basic setup for the system.

This guide and other supporting documents are located on the web at <http://support.intel.com/support/motherboards/server>.

If you are not familiar with ESD (Electrostatic Discharge) procedures used during system integration, please see the *Intel® Server Board and Server Chassis Safety Information* document at <http://support.intel.com/support/motherboards/server/sb/cs-010770.htm>.



Warning

Safety information: Read all the safety and caution statements in this document before performing any of the instructions. Also, see the *Intel® Server Board and Server Chassis Safety Information* document at: <http://support.intel.com/support/motherboards/server/sb/cs-010770.htm> for complete safety information.

Installation and service: Installation and service of this product is to be performed only by qualified service personnel to avoid risk of injury from electrical shock or energy hazard.

Enclosure cover: In order to comply with applicable safety, emission, and thermal requirements, no covers should be removed.

Caution

Electrostatic discharge: Observe normal Electrostatic Discharge (ESD) procedures during system integration to avoid possible damage to the system board and/or other components of the storage system.

Storage system power: The power connection must always be removed before disconnecting the power supply module from the storage enclosure.

Package Contents

- Intel® Entry Storage System SS4200-E
- This document
- (16) RVR (rotational vibration reduction) screws (inside chassis). Spare screws located, inside, next to front panel board.
- AC power cord (North America only)
- Resource CD

Installation Requirements

- One wired RJ-45 network connection
- Microsoft Internet Explorer® 6.0 or later, or Firefox® 1.06 or later
- One installed Serial ATA hard drive with 80-GB minimum capacity (a minimum of two drives are recommended to provide data protection)

Supported Operating Systems

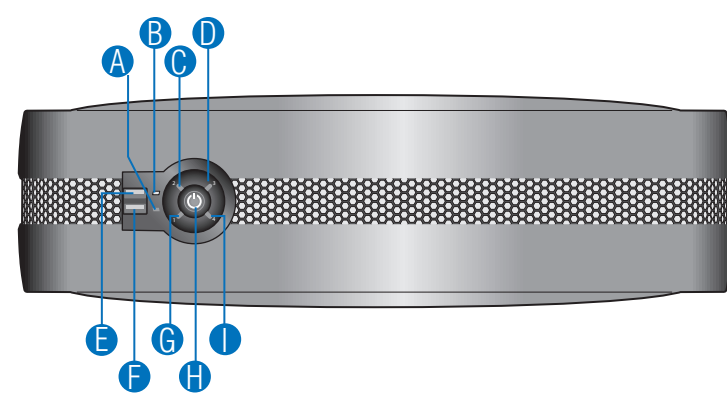
Microsoft Windows XP® Professional, SP2
Microsoft Windows XP® Home, SP2
Microsoft Windows Vista® Home Basic
Microsoft Windows Vista® Ultimate
Microsoft Windows 2000® Professional, SP2
Apple® Macintosh OS X, V10.4.10

Supported Browsers

Mozilla® Firefox V1.x and V2.x
Microsoft Internet Explorer® V7.x
Apple® Safari V2.0.4

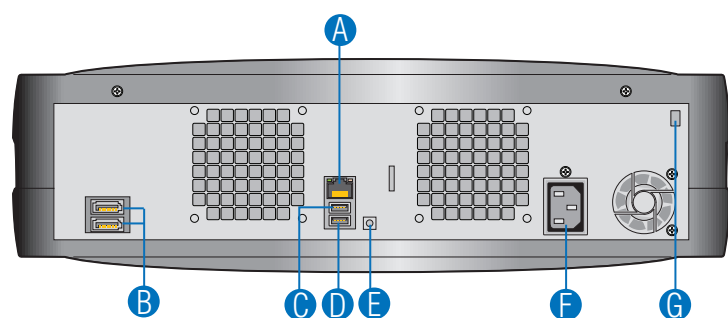
Refer to the *Tested Hardware and Operating Systems List* on <http://support.intel.com/support/motherboards/server> for a list of compatible hard drives.

Front Panel



- A NIC Activity LED
- B Disk Drive Activity LED
- C Disk Drive 2 Status LED
- D USB Port 3
- E USB Port 0
- F USB Port 1
- G Disk Drive 1 Status LED
- H Power/Status Push-button
- I Disk Drive 4 Status LED

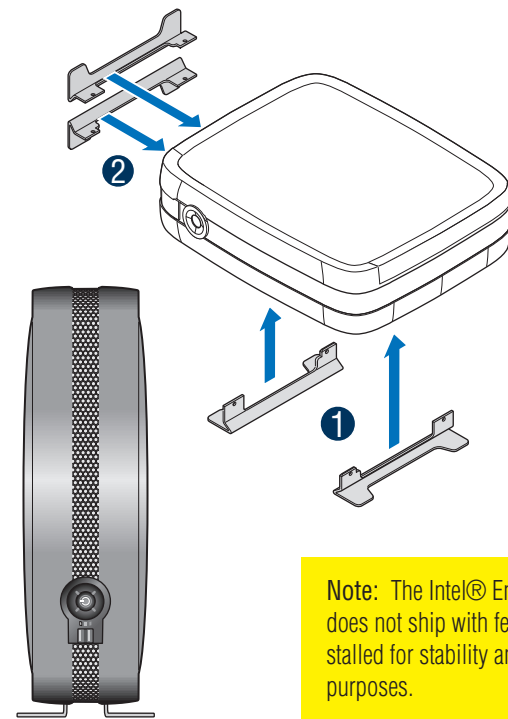
Back Panel



- A NIC Port (1 GB)
- B e-SATA Ports
- C USB Port 2
- D USB Port 3
- E Reset Button
- F A/C Power
- G Chassis Cable Lock

1

Configure Feet



To install feet for horizontal configuration:

- 1 Insert feet into horizontal position slots in chassis. Feet are keyed to fit only one way in slots.

To install feet for vertical configuration:

- 2 Insert feet into vertical position slots in chassis. Feet are keyed to fit only one way in slots.

Note: The Intel® Entry Storage System SS4200-E does not ship with feet installed. Feet should be installed for stability and rotational vibration dampening purposes.

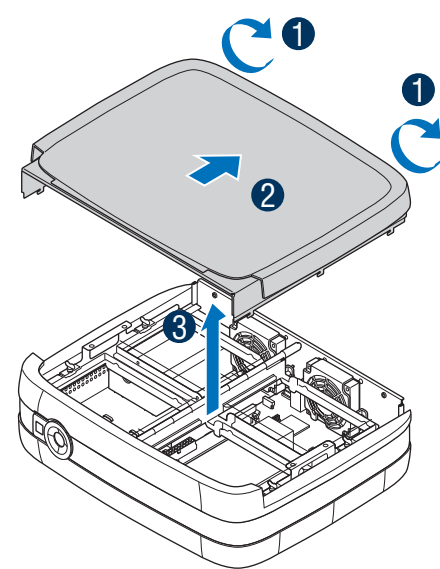
If NO hard drives are installed in your system, proceed with Step 2.

If hard drives are installed in your system, proceed with Step 5.

2

Remove Enclosure Cover

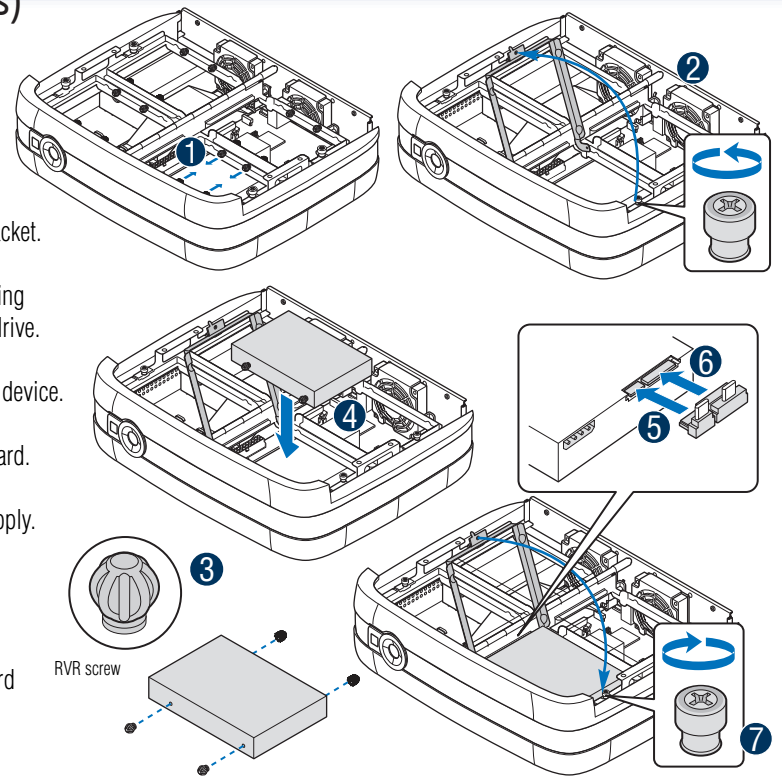
- 1 Loosen the two captive screws at rear of system.
- 2 Slide enclosure cover toward rear of system.
- 3 Lift enclosure cover upward to remove from system.



3

Install Hard Drive(s)

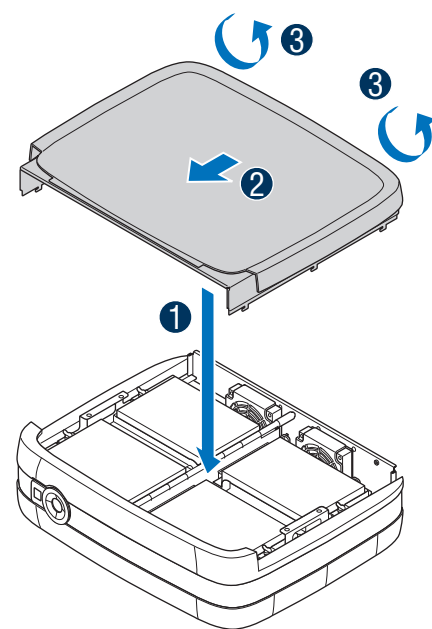
- 1 Remove four RVR screws from drive retention bracket.
- 2 Loosen the captive screw at front of drive retention bracket and lift up bracket.
- 3 Remove new hard drive from packaging and attach four RVR screws to hard drive.
- 4 Install hard drive into drive retention device.
- 5 Connect SATA cable from system board.
- 6 Connect power cable from power supply.
- 7 Lower drive retention bracket and tighten captive screw.
- 8 Repeat above steps for remaining hard drives.



4

Install Enclosure Cover

- 1 Align enclosure cover over sides of system.
- 2 Slide enclosure cover toward front of system.
- 3 Tighten the two captive screws at rear of system to secure enclosure cover to chassis.

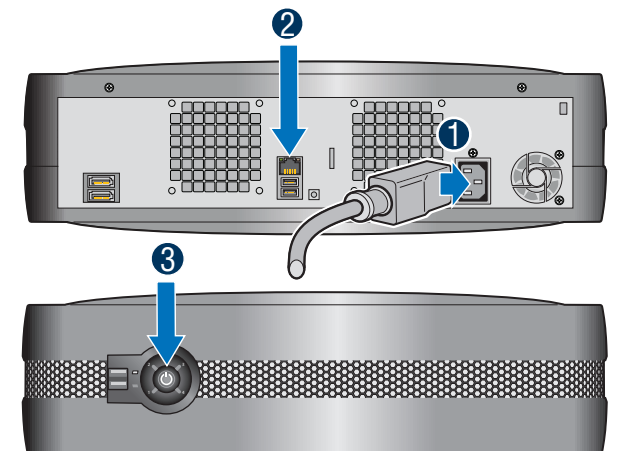


5

Connect Cables

- 1 Connect power cord to back of storage system.
- 2 Connect RJ-45 cable from your network (client, switch, router, hub, etc.) to the Ethernet port.
- 3 Power up system by pressing power button on front panel. The power button LED will turn solid blue when system is operational.

Warning: WAIT! Do not proceed until all front panel lights are blue. The file system is created the first time you power on the storage system. This process can take up to one hour to complete. You may proceed with the installation; however, you will not be able to use the system until the file system creation process is complete.



Accessories and Order Codes	
Power Supply	FXXSS4200EPSU
Cooling Fan	FXXSS4200EFAN
RVR Screw	FXXSS4200ESCR

A complete list of accessories and spares can be found at: www.intel.com/go/serverbuilder.

E24029-003



Intel is a registered trademark of Intel Corporation or its subsidiaries in the United States and other countries.

*Other names and brands may be claimed as the property of others.

Copyright © 2007, Intel Corporation. All rights reserved.