

6 Loading the Storage System Software

Note: On Apple® Macintosh operating systems, setup screens have same functionality but may appear different.

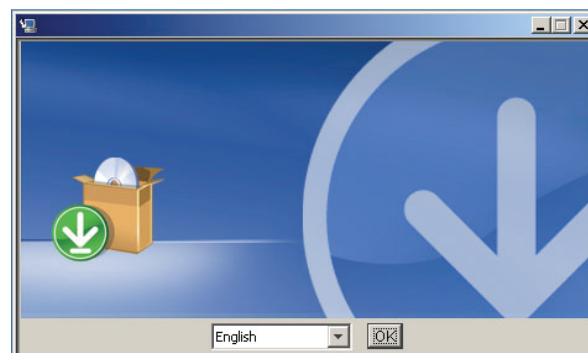
Note: It is recommended that the storage system is connected to a DHCP-enabled network to complete the software install.

- 1 Insert the Resource CD that shipped with your Intel® Entry Storage System SS4200-E into a computer connected to the same network as the storage system.

Note: If the Resource CD does not start automatically, navigate to the Resource CD and manually run `install.exe`. The storage system manager software must be installed on a computer that is on the same network as your storage system.

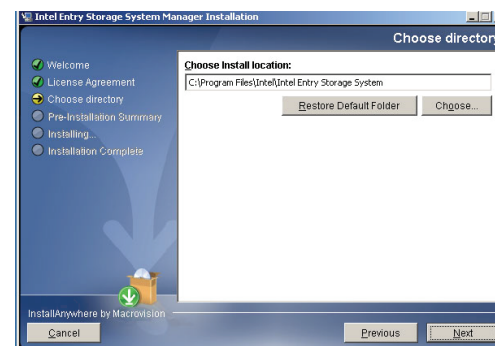
- 2 Proceed through the Installation Wizard.

Select Language and click OK to continue.

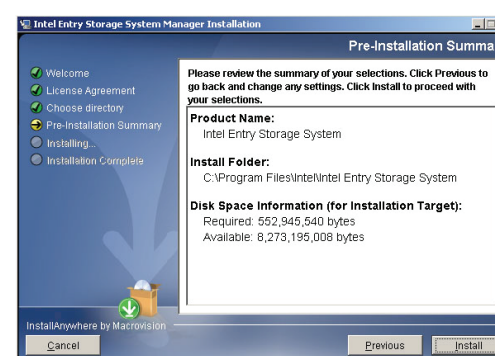


- 3 Select I accept the terms of the License Agreement on the license agreement screen. Click Next to continue.

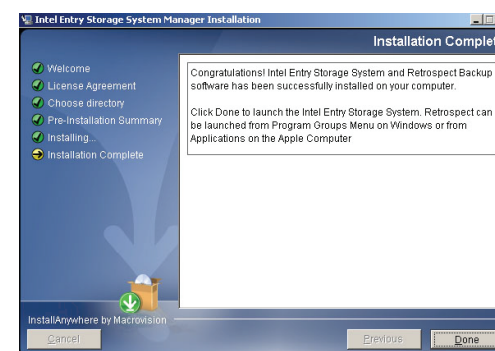
- 4 Select location for the install and click Next to continue.



- 5 Click Install.



- 6 The Installation Complete screen will appear. Click on Done.



Note: If your storage system is not detected by the manager, the Hardware Setup instructions will display.

- 7 The storage system manager will open automatically in the browser. The Welcome screen will display.



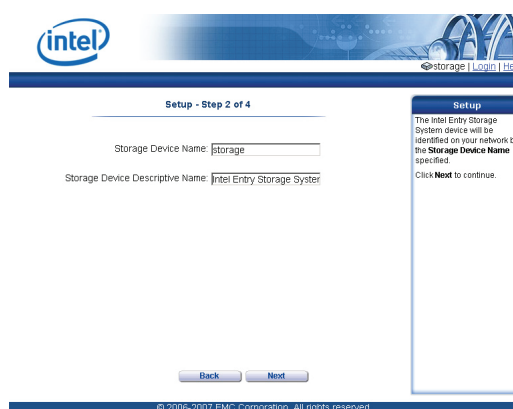
Note: When attempting to connect, Microsoft Internet Explorer® may display a security certificate warning screen. If this occurs, click Yes or Accept to proceed.

- 8 Click Next to start the Setup Wizard.

8 Identifying Storage System on Network

The default name for the storage system is storage. You may keep this default name if desired.

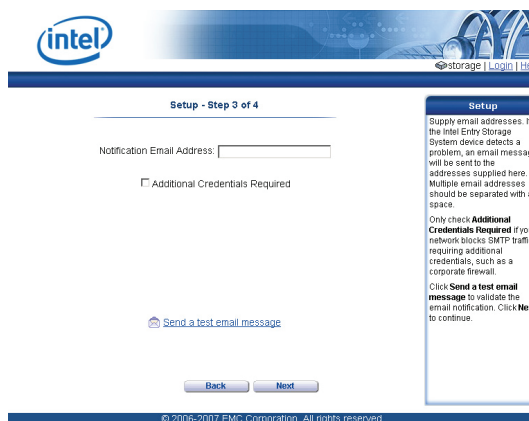
- 1 Enter a device name for the storage system. You will use this name to identify the system on the network.
- 2 Enter a descriptive name for the storage system.



- 3 Click Next to continue.

9 Setting Up Email Notification

- 1 (Optional) Enter a valid email address if you want the system to send out an email message when a problem is detected. Check **Additional Credentials Required** only if your network blocks SMTP traffic or requires additional credentials.



- 2 (Optional) Click on Send a test email message.
- 3 Click Next to continue.

10 Configuring Date/Time

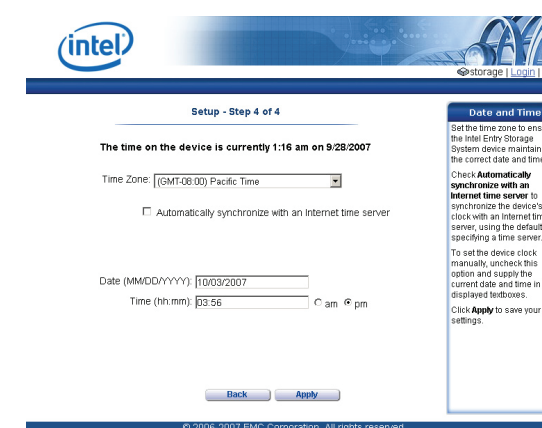
- 1 Select a time zone from the pull-down list.
- 2 Specify either a time server OR manually enter a time and date.

To use the default time server, check the **Automatically synchronize with an Internet time server** and select the default time server.

To specify a specific time server, check the **Automatically synchronize with an Internet time server** and select **Specify the time server**. Enter the URL of the Internet time server in the Server text box that displays.

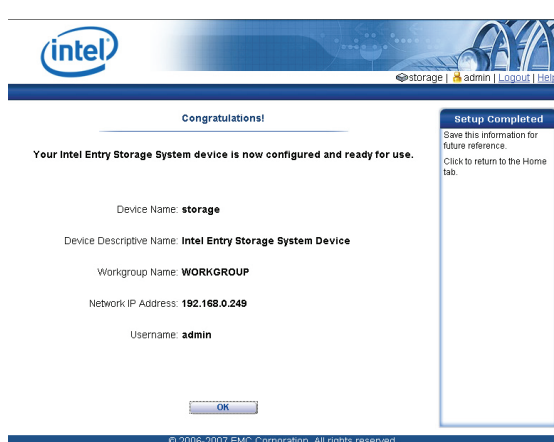
To manually specify the time, uncheck the **Automatically synchronize with an Internet time server** and enter the current Date (MM/DD/YYYY), Time (hh:mm) and either am or pm in the text boxes that display.

- 3 Click Apply to continue.




11 Completing Setup

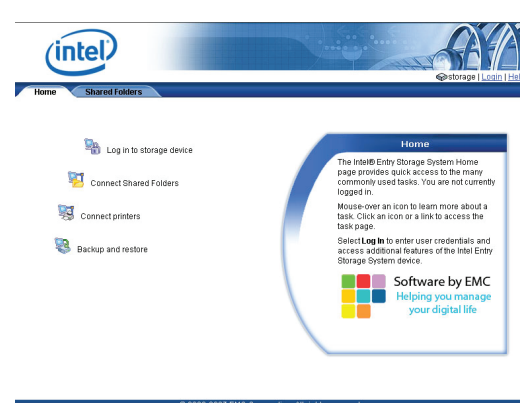
- 1 At the Congratulations screen, make a note of the IP address, then click OK.



If you have changed the device name from the default (storage), the Restart Required page displays. Click Apply to restart the storage system. Your connection may be temporarily lost during this time and you may need to log into the Storage Manager.

12 Connecting to your Storage System

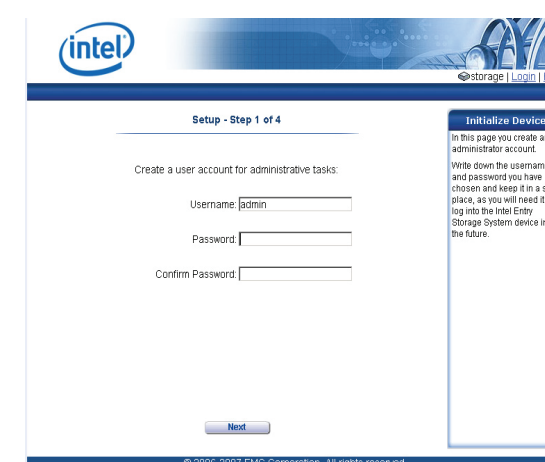
- 1 EITHER open a browser window and type in the IP address of your storage system OR double click the  icon on your desktop.
- 2 If an Internet Explorer content block screen appears, click Add. Click Add at the Trusted Sites screen.
- 3 At the Home Page, click Log in to storage device.
- 4 Type in user name and password. Click Log In.



This completes the basic user configuration of the Intel® Entry Storage System SS4200-E. Refer to the *Intel® Entry Storage System SS4200-E Software User Guide* for additional information on setting up users and shared folders. Refer to the EMC® Retrospect Backup and Recovery online help for information on backing up your system.

7 Creating an Administrator Account

- 1 Enter a username for the administrator account. The username can be up to 32 characters in length. Spaces are not allowed.
- 2 Create a password for the administrator account. For stronger security, it is recommended that the password be between 8 and 12 characters. Spaces are not allowed.



- 3 Click Next to continue.

Levels of Protection

RAID 1 (Mirrored)

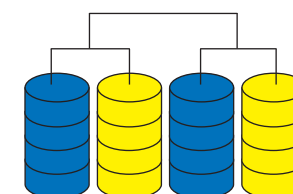


Number of Disks: 2

Net Capacity using Two 500-GB drives: 500 GB

Disk mirroring. Data is mirrored across two disks. This provides good data protection.

RAID 0+1 (Striped and Mirrored)

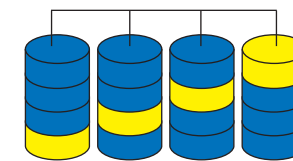


Number of Disks: 4

Net Capacity using Four 500-GB drives: 1 TB

Disk striping and mirroring. Data is striped across two disks and mirrored across the other two. This provides good performance with good data protection.

RAID 5 (Parity)



Number of Disks: 4

Net Capacity using Four 500-GB drives: 1.5 TB

Striping with parity. Data and parity information are spread among each drive in the array. A good compromise of performance, fault tolerance, and drive space utilization.