



This Technical Advisory describes an issue which may or may not affect the customer's product

Intel Technical Advisory

TA-1048-02

5200 NE Elam Young Parkway
Hillsboro, OR 97124

April 17, 2014

Java* Version 7 Update will block RMM Remote Console (KVM)

Products Affected:

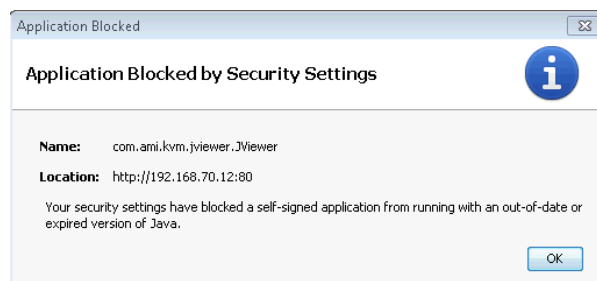
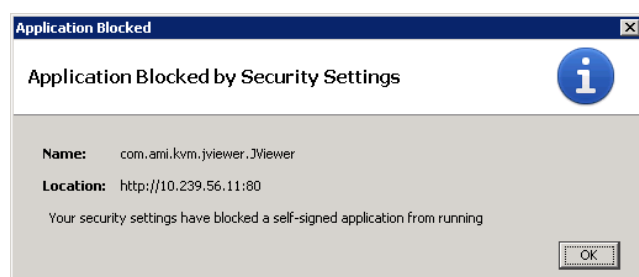
| Product Name | Product Code | MM# |
|-----------------------------------|--------------|--------|
| Intel® Remote Management Module 3 | AXXRMM3 | 900961 |
| | AXXRMM3LI | 908851 |
| | AXXRMM3LITE | 905659 |
| | AXXRMM3LITEV | 907787 |
| Intel® Remote Management Module 4 | AXXRMM4 | 911670 |
| | AXXRMM4IOM | 918249 |
| | AXXRMM4IOMW | 918304 |
| | AXXRMM4LITE | 911660 |
| | AXXRMM4R | 920858 |

Description:

Customers using the RMM remote console (KVM) will experience an informational notification concerning the self-signed application used in the RMM remote console and the application will be blocked.

The user will see a pop-up message indicating “Application Blocked by Security Settings” while downloading or starting Java console application. This issue exists in, Intel® RMM3 and Intel® RMM4 solutions.

Examples:



Root Cause:

Intel BMC firmware JAR (Java Archive) contains a self-signed JAVA signature.
The newer Java versions requires the signature to be provided by a "Trusted Authority".

Corrective Action / Resolution:

Intel's plans to incorporate a new JAR in a future BMC firmware release to address this issue.
[The table below lists the version numbers for these releases.](#)
[The workaround below can also be used to restore full operation.](#)
[Please contact your Intel Sales Representative if you require more specific information about this issue.](#)

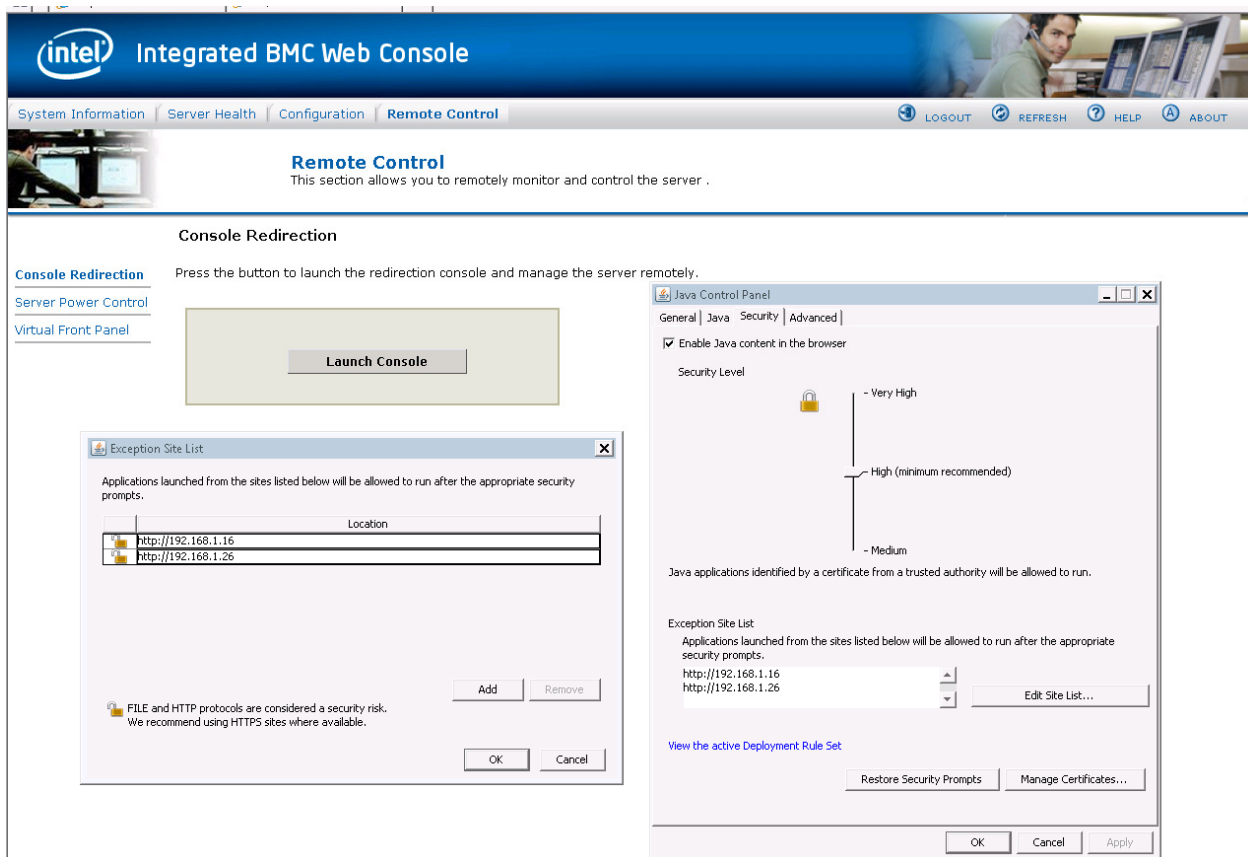
Intel Recommendations:

Workaround:

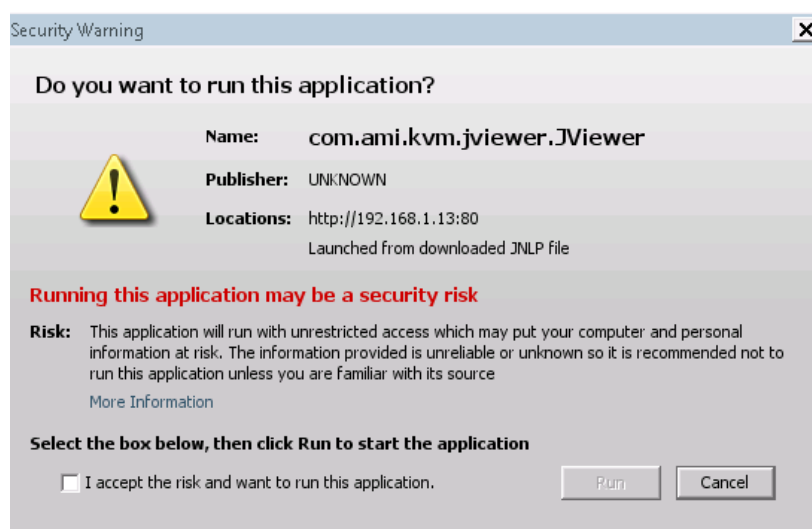
In JAVA 7U51, there is an option to allow self-signed applications by adding the RMM address to the Exception Site List in the JAVA control panel. This will allow customer to continue to use the RMM until the new code update is released.

For Windows,

- Open the windows control panel and select the Java control panel
- Click the Security tab and select the Edit Site List button
- Enter you RMM address into the Exception Site List and Click OK



When you now click the Launch Console button in the RMM browser a pop-up message will appear giving you the option to continue using the self-signed RMM JAVA application.



Pending BMC releases which will contain the new Java signature files:

| Product Code | Intel® Remote Management Module Support | BMC Rev.or higher contains new Java | Projected release |
|------------------------------------|---|-------------------------------------|-------------------|
| Intel® Server Board S5520UR | AXXRMM3 | 0.62 | Q2 ' 14 |
| Intel® Server Board S5520URT | AXXRMM3 | 0.62 | Q2 ' 14 |
| | | | |
| Intel® Server System SR1630HGPRX | AXXRMM3Lite | 1.26 | Q2 ' 14 |
| | | | |
| Intel® Server Board S1200BTLR | AXXRMM4 | 1.18 | Q3 ' 14 |
| Intel® Server Board S1200BTLRM | AXXRMM4 | 1.18 | Q3 ' 14 |
| Intel® Server System P4304BTLSCNR | AXXRMM4 | 1.18 | Q3 ' 14 |
| Intel® Server System P4304BTLSCNR | AXXRMM4 | 1.18 | Q3 ' 14 |
| Intel® Server System R1304BTLSCFNR | AXXRMM4 | 1.18 | Q3 ' 14 |
| Intel® Server System R1304BTLSCFNR | AXXRMM4 | 1.18 | Q3 ' 14 |
| | | | |
| Intel® Server Board S2400BB4 | AXXRMM4 | 1.21 | Q2 ' 14 |
| Intel® Server System R1208BB4DC | AXXRMM4 | 1.21 | Q2 ' 14 |
| Intel® Server System R1208BB4GS9 | AXXRMM4 | 1.21 | Q2 ' 14 |
| Intel® Server System R1304BB4DC | AXXRMM4 | 1.21 | Q2 ' 14 |

| | | | |
|--|---------|------|---------|
| Intel® Server System R1304BB4GS9 | AXXRMM4 | 1.21 | Q2 ' 14 |
| Intel® Server System R2208BB4GS9 | AXXRMM4 | 1.21 | Q2 ' 14 |
| Intel® Server System R2308BB4GC | AXXRMM4 | 1.21 | Q2 ' 14 |
| Intel® Server System R2312BB4GS9 | AXXRMM4 | 1.21 | Q2 ' 14 |
| Intel® Server Board S2600CP2 | AXXRMM4 | 1.21 | Q2 ' 14 |
| Intel® Server Board S2600CP4 | AXXRMM4 | 1.21 | Q2 ' 14 |
| Intel® Server System P4308CP4MHEN | AXXRMM4 | 1.21 | Q2 ' 14 |
| Intel® Server System P4308CP4MHGC | AXXRMM4 | 1.21 | Q2 ' 14 |
| Intel® Server Board S2600CO4 | AXXRMM4 | 1.21 | Q2 ' 14 |
| Intel® Server Board S2600COE | AXXRMM4 | 1.21 | Q2 ' 14 |
| Intel® Workstation Board W2600CR2 | AXXRMM4 | 1.21 | Q2 ' 14 |
| Intel® Workstation System P4304CR2LFFKN | AXXRMM4 | 1.21 | Q2 ' 14 |
| Intel® Server Board S2400EP2 | AXXRMM4 | 1.21 | Q2 ' 14 |
| Intel® Server Board S2400EP4 | AXXRMM4 | 1.21 | Q2 ' 14 |
| Intel® Server System R1304EP2SHFN | AXXRMM4 | 1.21 | Q2 ' 14 |
| Intel® Server Board S1400FP2 | AXXRMM4 | 1.21 | Q2 ' 14 |
| Intel® Server Board S1400FP4 | AXXRMM4 | 1.21 | Q2 ' 14 |
| Intel® Server Board S2600GL | AXXRMM4 | 1.21 | Q2 ' 14 |
| Intel® Server Board S2600GZ | AXXRMM4 | 1.21 | Q2 ' 14 |
| Intel® Server System R1208GL4DS | AXXRMM4 | 1.21 | Q2 ' 14 |
| Intel® Server System R1208GZ4GC | AXXRMM4 | 1.21 | Q2 ' 14 |
| Intel® Server System R1208GZ4GS9 | AXXRMM4 | 1.21 | Q2 ' 14 |
| Intel® Server System R1304GL4DS9 | AXXRMM4 | 1.21 | Q2 ' 14 |
| Intel® Server System R1304GZ4GC | AXXRMM4 | 1.21 | Q2 ' 14 |
| Intel® Server System R1304GZ4GS9 | AXXRMM4 | 1.21 | Q2 ' 14 |
| Intel® Server System R2208GL4GS | AXXRMM4 | 1.21 | Q2 ' 14 |
| Intel® Server System R2208GZ4GC | AXXRMM4 | 1.21 | Q2 ' 14 |
| Intel® Server System R2208GZ4GS9 | AXXRMM4 | 1.21 | Q2 ' 14 |
| Intel® Server System R2216GZ4GC | AXXRMM4 | 1.21 | Q2 ' 14 |
| Intel® Server System R2224GZ4GC4 | AXXRMM4 | 1.21 | Q2 ' 14 |
| Intel® Server System R2308GL4GS | AXXRMM4 | 1.21 | Q2 ' 14 |
| Intel® Server System | AXXRMM4 | 1.21 | Q2 ' 14 |

| | | | |
|--------------------------------------|---------|------|---------|
| R2308GZ4GC | | | |
| Intel® Server System R2308GZ4GS9 | AXXRMM4 | 1.21 | Q2 ' 14 |
| Intel® Server System R2312GL4GS | AXXRMM4 | 1.21 | Q2 ' 14 |
| Intel® Server System R2312GZ4GC4 | AXXRMM4 | 1.21 | Q2 ' 14 |
| Intel® Server System R2312GZ4GS9 | AXXRMM4 | 1.21 | Q2 ' 14 |
| Intel® Server Board S2600IP4 | AXXRMM4 | 1.21 | Q2 ' 14 |
| Intel® Server System P4216IP4LHJC | AXXRMM4 | 1.21 | Q2 ' 14 |
| Intel® Server System P4308IP4LHJC | AXXRMM4 | 1.21 | Q2 ' 14 |
| Intel® Server System R2208IP4LHPC | AXXRMM4 | 1.21 | Q2 ' 14 |
| Intel® Server System R2308IP4LHPC | AXXRMM4 | 1.21 | Q2 ' 14 |
| Intel® Server System R2312IP4LHPC | AXXRMM4 | 1.21 | Q2 ' 14 |
| Intel® Server Board S1600JP2 | AXXRMM4 | 1.21 | Q2 ' 14 |
| Intel® Server Board S1600JP4 | AXXRMM4 | 1.21 | Q2 ' 14 |
| Intel® Server System R1208JP4GS | AXXRMM4 | 1.21 | Q2 ' 14 |
| Intel® Server System R1208JP4OC | AXXRMM4 | 1.21 | Q2 ' 14 |
| Intel® Server System R1208JP4TC | AXXRMM4 | 1.21 | Q2 ' 14 |
| Intel® Server System R1304JP4GS | AXXRMM4 | 1.21 | Q2 ' 14 |
| Intel® Server System R1304JP4OC | AXXRMM4 | 1.21 | Q2 ' 14 |
| Intel® Server System R1304JP4TC | AXXRMM4 | 1.21 | Q2 ' 14 |
| Intel® Compute Module HNS2600JF | AXXRMM4 | 1.21 | Q2 ' 14 |
| Intel® Compute Module HNS2600JFF | AXXRMM4 | 1.21 | Q2 ' 14 |
| Intel® Compute Module HNS2600JFQ | AXXRMM4 | 1.21 | Q2 ' 14 |
| Intel® Server Board S2600JF | AXXRMM4 | 1.21 | Q2 ' 14 |
| Intel® Server Board S2600JFF | AXXRMM4 | 1.21 | Q2 ' 14 |
| Intel® Server Board S2600JFQ | AXXRMM4 | 1.21 | Q2 ' 14 |
| Intel® Server Board S2400LP | AXXRMM4 | 1.21 | Q2 ' 14 |
| Intel® Server Board S4600LH2 | AXXRMM4 | 1.21 | Q2 ' 14 |
| Intel® Server Board S4600LT2 | AXXRMM4 | 1.21 | Q2 ' 14 |
| Intel® Server System R2208LT2HKC4 | AXXRMM4 | 1.21 | Q2 ' 14 |
| Intel® Server System R2304LH2HKC | AXXRMM4 | 1.21 | Q2 ' 14 |
| Intel® Server Board S1400SP2 | AXXRMM4 | 1.21 | Q2 ' 14 |
| Intel® Server Board S1400SP4 | AXXRMM4 | 1.21 | Q2 ' 14 |

| | | | |
|--------------------------------------|---------|------|---------|
| Intel® Server System R1304SP2SHBN | AXXRMM4 | 1.21 | Q2 ' 14 |
| Intel® Server System R1304SP4SHOC | AXXRMM4 | 1.21 | Q2 ' 14 |
| Intel® Server Board S2400SC2 | AXXRMM4 | 1.21 | Q2 ' 14 |
| Intel® Server System P4304SC2SFEN | AXXRMM4 | 1.21 | Q2 ' 14 |
| Intel® Server System P4308SC2MHGC | AXXRMM4 | 1.21 | Q2 ' 14 |
| Intel® Server System R2308SC2SHFN | AXXRMM4 | 1.21 | Q2 ' 14 |
| Intel® Server System R2312SC2SHGR | AXXRMM4 | 1.21 | Q2 ' 14 |
| Intel® Compute Module HNS2600WP | AXXRMM4 | 1.21 | Q2 ' 14 |
| Intel® Compute Module HNS2600WPF | AXXRMM4 | 1.21 | Q2 ' 14 |
| Intel® Compute Module HNS2600WPQ | AXXRMM4 | 1.21 | Q2 ' 14 |
| Intel® Server Board S2600WP | AXXRMM4 | 1.21 | Q2 ' 14 |
| Intel® Server Board S2600WPF | AXXRMM4 | 1.21 | Q2 ' 14 |
| Intel® Server Board S2600WPQ | AXXRMM4 | 1.21 | Q2 ' 14 |

| | | | |
|--------------------------------------|---------|------|---------|
| Intel® Server Board S1200V3RPL | AXXRMM4 | 1.11 | Q1 ' 14 |
| Intel® Server Board S1200V3RPM | AXXRMM4 | 1.11 | Q1 ' 14 |
| Intel® Server Board S1200V3RPO | AXXRMM4 | 1.11 | Q1 ' 14 |
| Intel® Server System P4308RPLSHDR | AXXRMM4 | 1.11 | Q1 ' 14 |
| Intel® Server System R1208RPMSHOR | AXXRMM4 | 1.11 | Q1 ' 14 |
| Intel® Server System R1208RPOSHOR | AXXRMM4 | 1.11 | Q1 ' 14 |
| Intel® Server System R1304RPMSHOR | AXXRMM4 | 1.11 | Q1 ' 14 |
| Intel® Server System R1304RPOSHBN | AXXRMM4 | 1.11 | Q1 ' 14 |

Please contact your Intel Sales Representative if you require more specific information about this issue.

INFORMATION IN THIS DOCUMENT IS PROVIDED IN CONNECTION WITH INTEL PRODUCTS. NO LICENSE, EXPRESS OR IMPLIED, BY ESTOPPEL OR OTHERWISE, TO ANY INTELLECTUAL PROPERTY RIGHTS IS GRANTED BY THIS DOCUMENT. EXCEPT AS PROVIDED IN INTEL'S TERMS AND CONDITIONS OF SALE FOR SUCH PRODUCTS, INTEL ASSUMES NO LIABILITY WHATSOEVER AND INTEL DISCLAIMS ANY EXPRESS OR IMPLIED WARRANTY, RELATING TO SALE AND/OR USE OF INTEL PRODUCTS INCLUDING LIABILITY OR WARRANTIES RELATING TO FITNESS FOR A PARTICULAR PURPOSE, MERCHANTABILITY, OR INFRINGEMENT OF ANY PATENT, COPYRIGHT OR OTHER INTELLECTUAL PROPERTY RIGHT.

A "Mission Critical Application" is any application in which failure of the Intel Product could result, directly or indirectly, in personal injury or death. SHOULD YOU PURCHASE OR USE INTEL'S PRODUCTS FOR ANY SUCH MISSION CRITICAL APPLICATION, YOU SHALL INDEMNIFY AND HOLD INTEL AND ITS SUBSIDIARIES, SUBCONTRACTORS AND AFFILIATES, AND THE DIRECTORS, OFFICERS, AND EMPLOYEES OF EACH, HARMLESS AGAINST ALL CLAIMS COSTS, DAMAGES, AND EXPENSES AND REASONABLE ATTORNEYS' FEES ARISING OUT OF, DIRECTLY OR INDIRECTLY, ANY CLAIM OF PRODUCT LIABILITY, PERSONAL INJURY, OR DEATH ARISING IN ANY WAY OUT OF SUCH MISSION CRITICAL APPLICATION, WHETHER OR NOT INTEL OR ITS SUBCONTRACTOR WAS NEGLIGENT IN THE DESIGN, MANUFACTURE, OR WARNING OF THE INTEL PRODUCT OR ANY OF ITS PARTS.

Intel may make changes to specifications and product descriptions at any time, without notice. Designers must not rely on the absence or characteristics of any features or instructions marked "reserved" or "undefined". Intel reserves these for future definition and shall have no responsibility whatsoever for conflicts or incompatibilities arising from future changes to them. The information here is subject to change without notice. Do not finalize a design with this information.

The products described in this document may contain design defects or errors known as errata which may cause the product to deviate from published specifications. Current characterized errata are available on request.

INTEL Product Collaboration and Systems Division
Intel Corporation
2111 N.E. 25th Avenue
Hillsboro, OR 97124 USA