



Intel® RSTe for MS Windows GUI Simulator Documentation Guide

Revision 1.0
March, 2015

Intel®RSTe for MS Windows GUI Simulator Documentation Guide

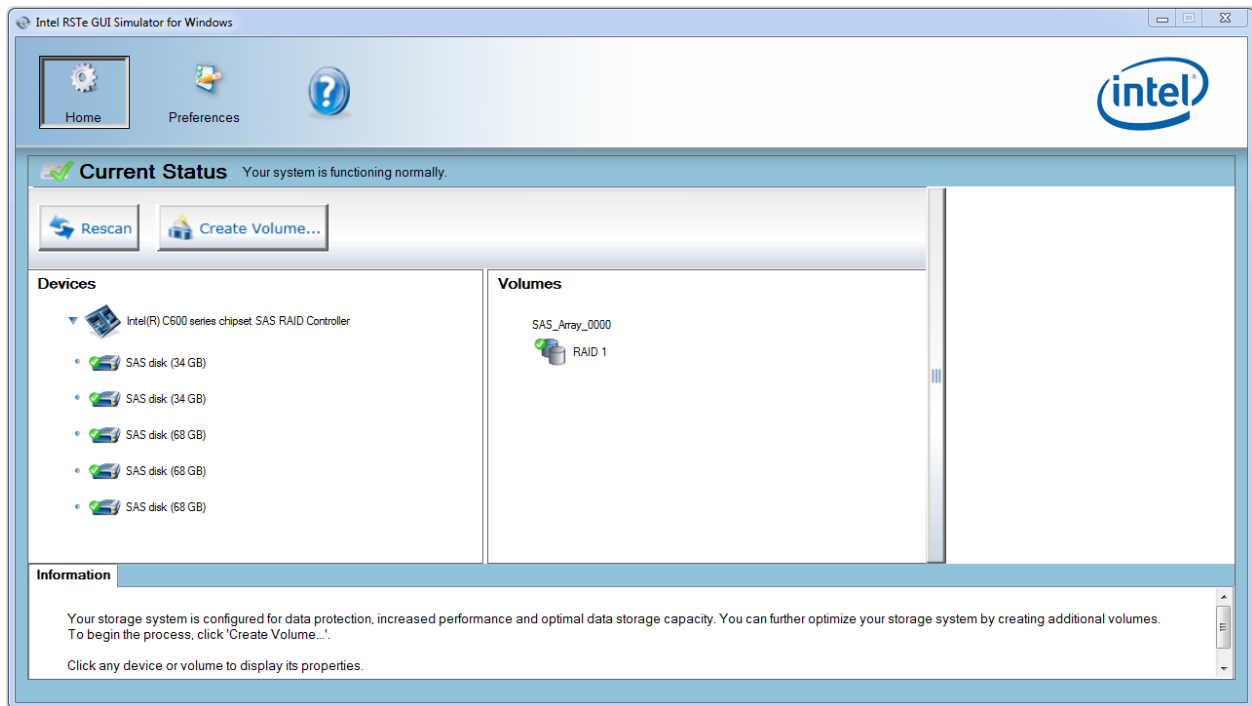
Table of Contents

Home	3
• Current Status	3
• Rescan	3
• Create Volume	4
○ Select	4
○ Configure	5
○ Confirm	6
• Devices	7
• Volumes	7
• Properties	7
Preferences	8
• System	8
• Email	9
Help	10

Intel® RSTe for MS Windows GUI Simulator Documentation Guide

Home

Use this menu to navigate through different functions of the simulator.



Current Status

Shows the current status of the system being simulated.

Rescan

Click this to rescan devices.

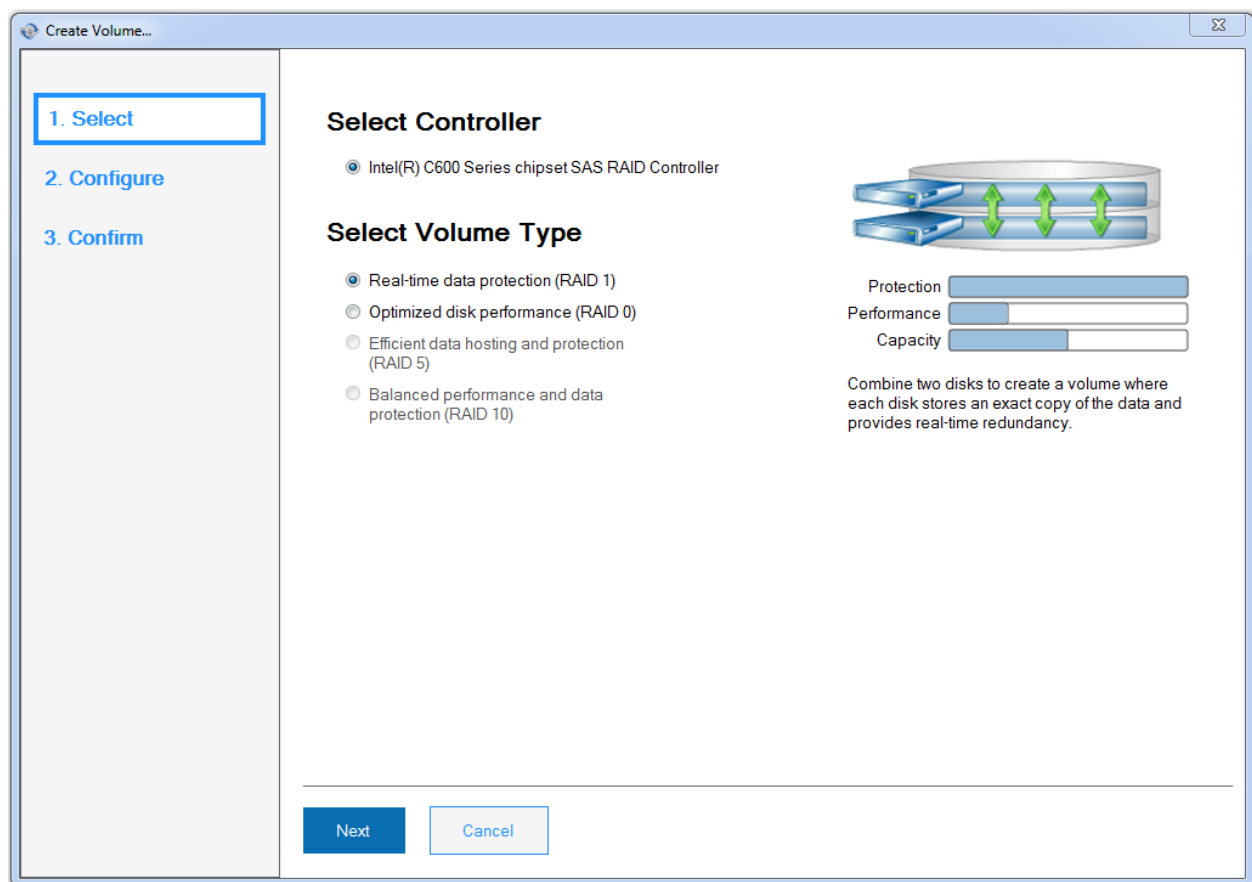
Intel® RSTe for MS Windows GUI Simulator Documentation Guide

Create Volume

Use this function to create new RAID volumes.

Select

This is the stage of Create volume function where user can select which type of RAID is to be used.



Note: The simulator does not support RAID 5 and RAID 10 simulation.

Intel® RSTe for MS Windows GUI Simulator

Documentation Guide

Configure

Configure the volume name, select array disks, and select volume size on the Configure stage.

The screenshot displays the 'Create Volume...' dialog box with the 'Configure' stage selected. The dialog is divided into three main sections: a left sidebar with step indicators, a central 'Configure Volume' area, and a right 'Proposed Configuration' area.

Left Sidebar: Shows three steps: '1. Select', '2. Configure' (highlighted with a blue border), and '3. Confirm'.

Configure Volume Section:

- Name:** A text field containing 'Volume_0000'.
- Do you want to add a volume to an existing array?** Radio buttons for 'No' (selected) and 'Yes: SAS_Array_0000'.
- Select the array disks (minimum selection required):** A yellow-highlighted box containing three checkboxes:
 - ☒ SAS disk on Controller, Phy 3 (68 GB)
 - ☒ SAS disk on Controller, Phy 4 (68 GB)
 - ☐ SAS disk on Controller, Phy 5 (68 GB)
- Volume Size:** A section with a 'Volume Size' field showing '66506.65 MB' and an 'Array Allocation' slider set to '95%'.

Proposed Configuration Section: Titled 'New Array', it shows a disk icon labeled 'Volume_0000' and two small drive icons below it.

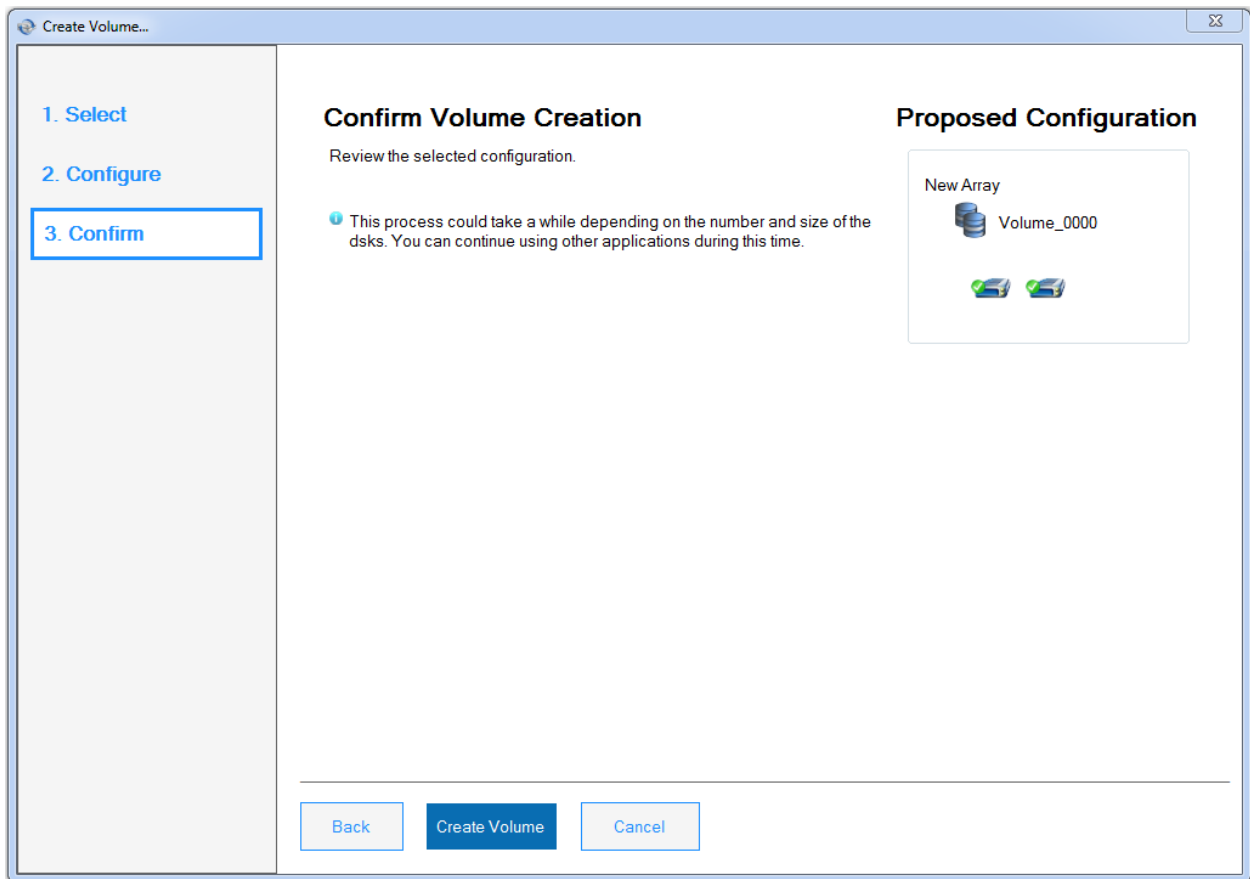
Bottom Buttons: 'Back', 'Next' (highlighted in blue), and 'Cancel'.

Intel® RSTe for MS Windows GUI Simulator

Documentation Guide

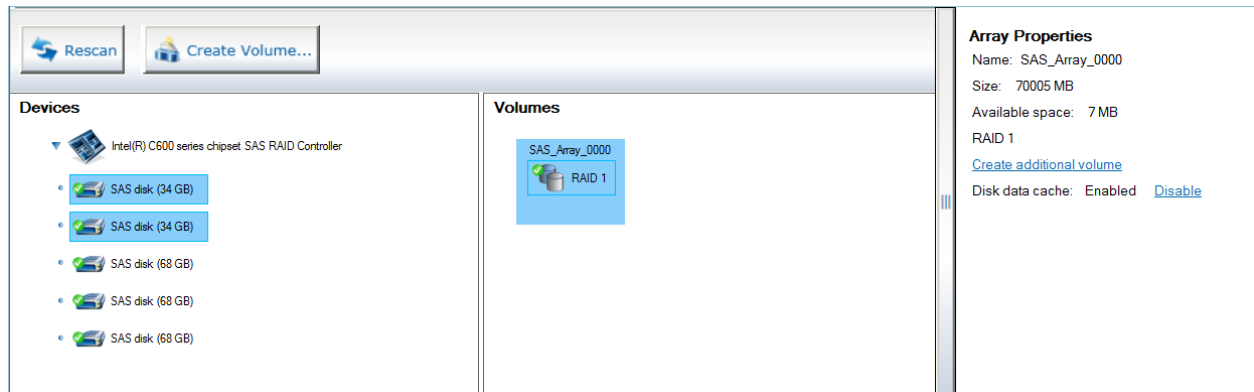
Confirm

Review the selected configuration. The Proposed Configuration box on the right side of the window shows the proposed volume name and the number of drives to be used.



Intel® RSTe for MS Windows GUI Simulator

Documentation Guide



Devices

Shows the list of RAID controllers and drives available. Click on any of the devices to show the device properties.

Volumes

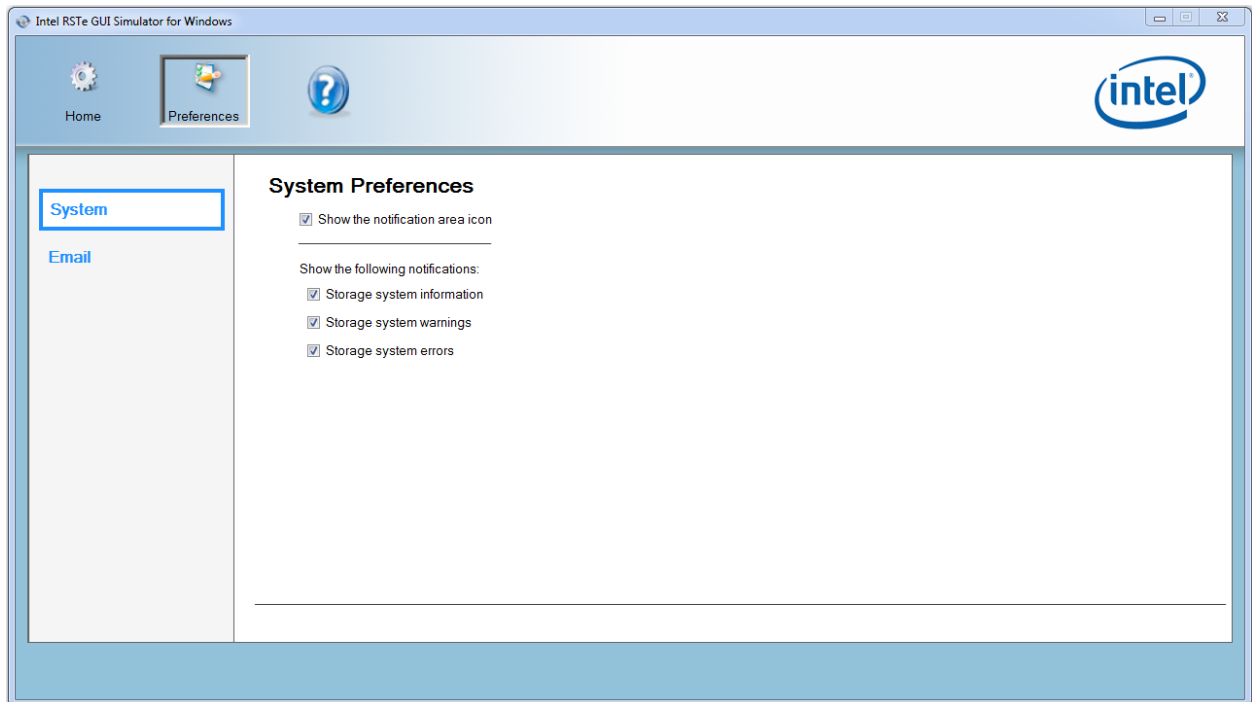
Shows the list of configured RAID volumes. Click on any of the RAID volumes to highlight the member drives on the Devices box.

Properties

Shows the properties of the devices and RAID volumes.

Intel® RSTe for MS Windows GUI Simulator Documentation Guide

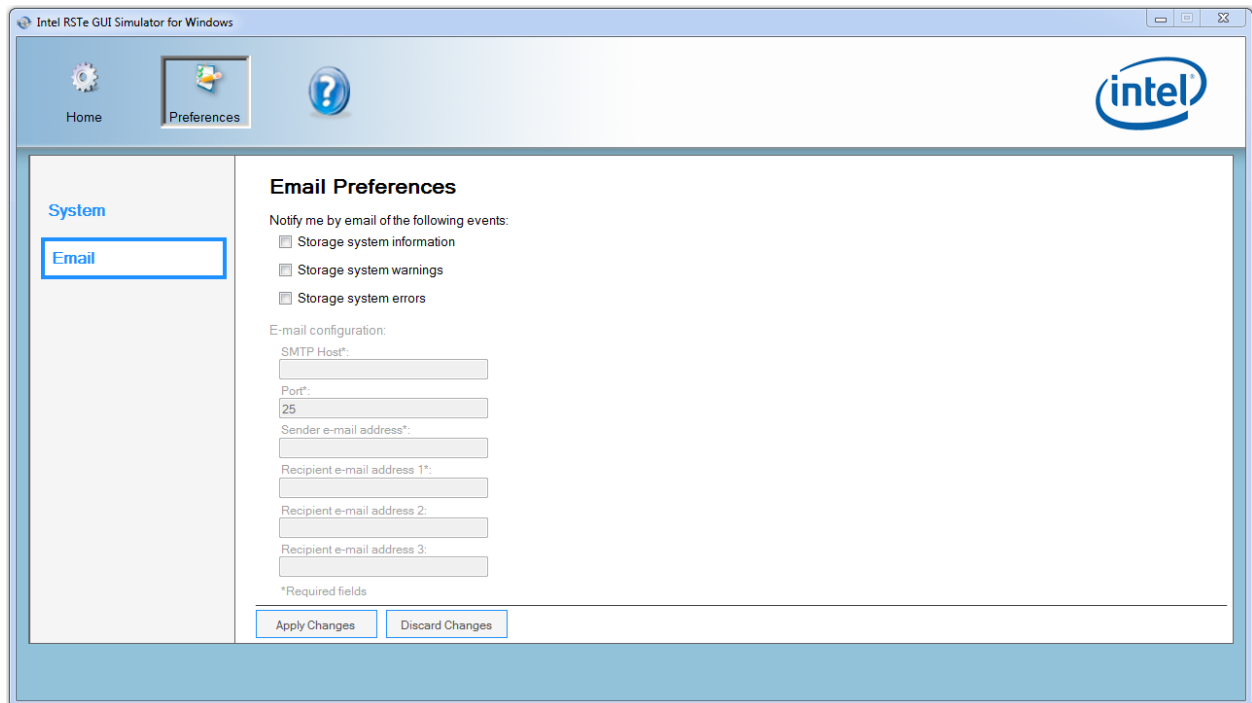
Preferences



System Preferences

The System Preferences give user the option to show or hide notifications.

Intel® RSTe for MS Windows GUI Simulator Documentation Guide

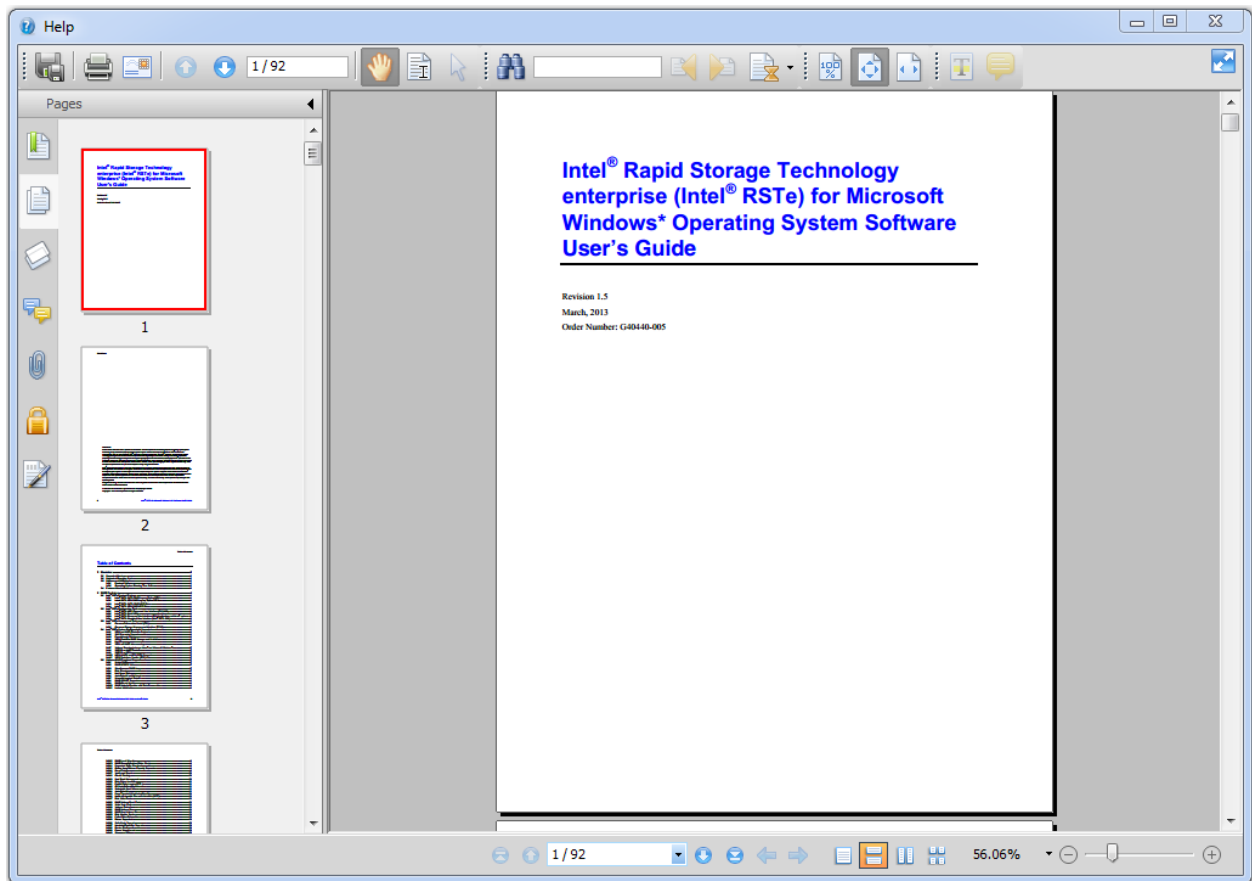


Email Preferences

Setup the email notifications and email configuration.

Note: The simulator does not support email function.

Intel® RSTe for MS Windows GUI Simulator Documentation Guide



Help

By clicking the Help button, a help window will appear loading the online Intel® Rapid Storage Technology (Intel® RSTe) for Windows* Operating System Software User's Guide