

## 10 Install Intel® RAID Activation Key and RAID Mini DIMM (optional)

- Insert the Intel® RAID Activation Key into the mid-plane board socket as shown. *Make sure the key snaps into the socket.*
- Open RAID mini DIMM socket levers and insert connector edge of mini DIMM into socket until levers close and snap into place.

## Check RAID BBU Battery Connection

- The RAID BBU has an internal battery power cable. Open the BBU case lid as shown.
- If the battery power cable is not connected, connect the cable now. Close and latch the BBU case lid.

## Install RAID Battery Backup Unit (BBU) (optional)

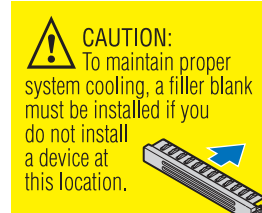
- The RAID BBU has two hooks on the underside. Align these hooks with the matching chassis tabs, then slide toward the power supply to lock into place.
- Connect the power cable between the BBU and the mid-plane board as shown.

Note: Backplane not shown for clarity.

## 11 Install Optical Device (optional)

### 1. Remove the Empty Tray

- Remove the empty tray and screw from the accessory kit box.
- For installing the optional USB floppy drive in place of a CD-ROM, see #5 below right.



### 2. Install the Interposer Board

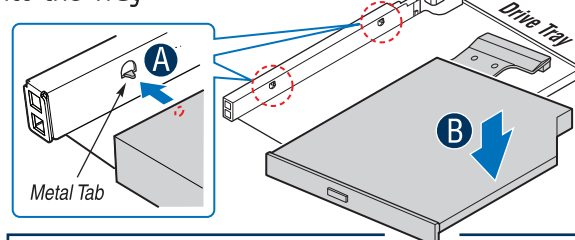
- Plug the interposer board connector into the matching connector on the back of the optical device.

### 4. Secure Interposer Board to Device Tray

- Make sure interposer board fits onto alignment pin on device tray.
- Attach with screw as shown.

### 3. Install Device into the Tray

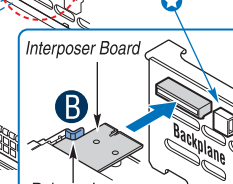
- Align the two holes on the left edge of the optical device with the two metal tabs in the tray.
- Lower opposite side of optical device into tray until it clicks into place.



### 5. Install Optical Device Tray Assembly into the Chassis

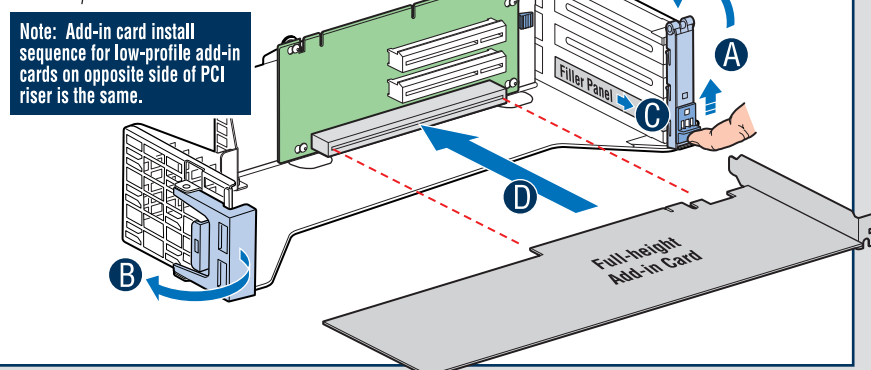
- For installing the optional USB floppy drive, note the location of the backplane USB connector at right and refer to the documentation that came with the device.

- Insert optical device tray assembly into the chassis.
- Verify that the blue release lever on the tray locks into place.



## 12 Install Add-in Card(s) • Full-height Side of PCI Riser Shown

- Open rear retention clip by pushing blue slide upward and rotating clip fully open.
- Open front retention clip by rotating 90 degrees outward.
- Remove filler panel from the selected add-in card slot.
- Insert add-in card until it seats in riser connector.
- Close both retention clips. *Note: Make sure that all empty add-in card slots have filler panels installed.*



## 13 Install PCI Add-in Card Riser Assembly

To install the riser assembly:

- Position riser card edge connector(s) over the server board riser socket(s) and align the three hooks in the riser with the slots at the back of the chassis.
- Press down uniformly until the three hooks on the rear of the PCI riser assembly engage the chassis back panel slots. The riser cards will seat into the matching sockets on the server board.

Note: The PCI riser assembly includes an intrusion switch that engages the system cover. Do not use the intrusion header located on the server board.

## 14 Second Processor Duct Modification

Configure Processor Air Duct for Two Processors:  
Note: This step only applies if your system has two processors. If only one processor is installed, leave the air dam in place and proceed to Step 15.

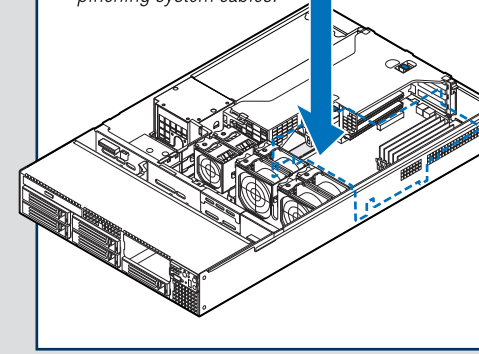
CAUTION: The CPU air dam must be in place for single processor configurations to ensure proper system cooling. Retain the air dam for future use.

- Turn processor air duct over to reveal underside.
- Remove CPU air dam by sliding slotted holes off of duct pins.

## 15 Install Processor Air Duct

Install processor air duct as shown.

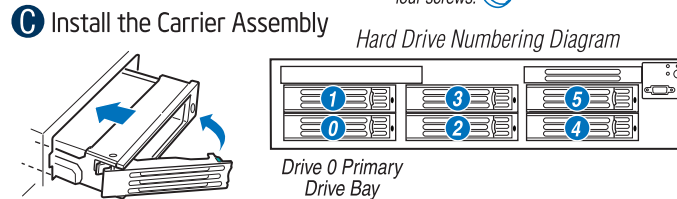
Use care to avoid pinching system cables.



## 16 Install Hard Drives/Carriers

### A Remove the Plastic Air Baffle B Install the Hard Disk Drive

- Remove the plastic air baffle from the drive carrier.
- Install the hard disk drive into the drive carrier.

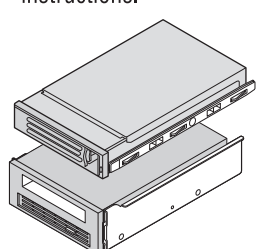


C Install the Carrier Assembly  
Note: Carrier lever must be held in the FULLY OPEN position to install into chassis. Slide carrier into chassis until it stops, then rotate the lever until it snaps shut.

CAUTIONS: If you install less than six drives or devices, empty drive bays must be occupied by carriers with baffles to maintain proper system cooling.  
To avoid possible damage to your chassis, use only carriers that came with your server system.

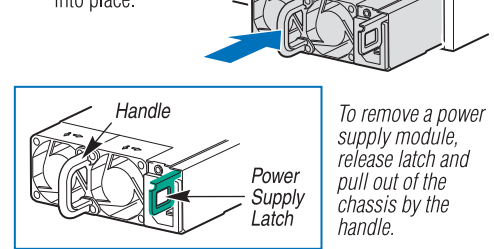
## 17 Install 6th Hard Drive or Tape Drive (optional)

See the product user's guide for optional sixth hard disk drive or tape drive installation instructions.



## 18 Install Second Power Supply Module (optional)

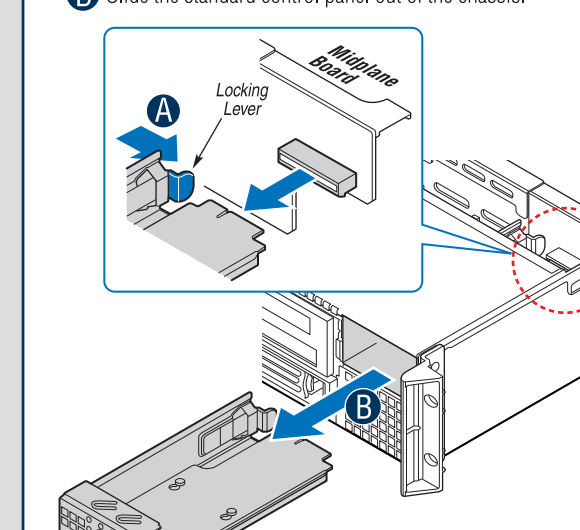
- Use the 'finger hole' to remove the filler panel.
- Insert the power supply module into the power supply cage until it clicks into place.



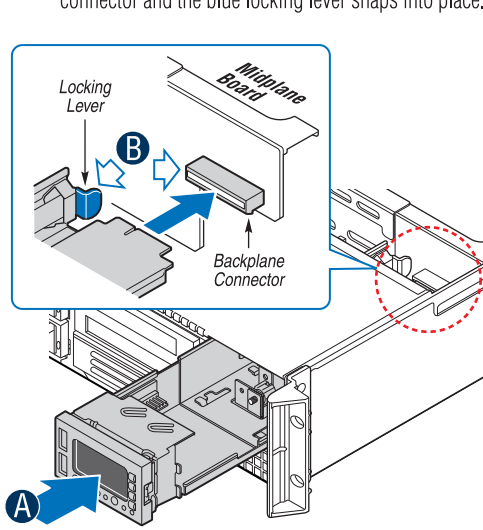
## 19 Install Intel® Local Control Panel (optional)

Remove Standard Control Panel Module

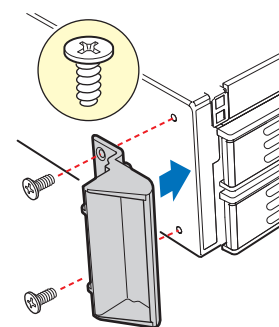
- Press the blue locking lever to release the control panel from the chassis.
- Slide the standard control panel out of the chassis.



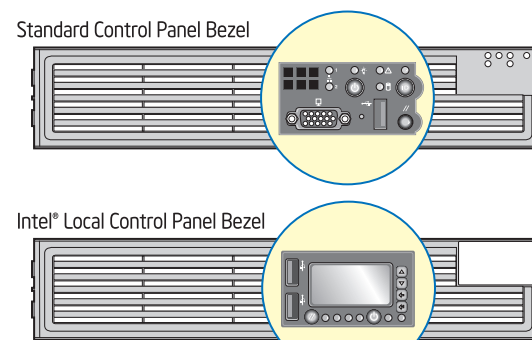
- Slide Intel® Local Control Panel into chassis.
- Make sure control panel engages the backplane connector and the blue locking lever snaps into place.



## 20 Install Rack Handles



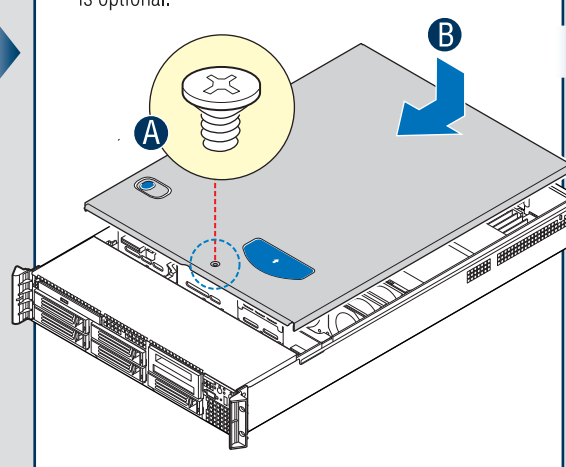
## 21 Install Bezel (optional)



Select the bezel that matches your control panel and install as shown.

## 22 Install Top Cover

Note: Security screw re-installation is optional.

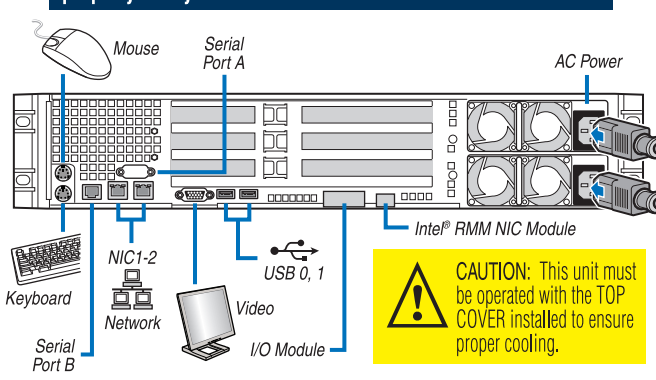


## 23 Finishing Up

Before installing your operating system, you must finish your system installation and connect back panel I/O connectors and AC power.

1. Replace the system cover.  
2. Connect your keyboard, mouse, video and other I/O cables/devices as shown. Then connect the AC power cord(s).

**IMPORTANT NOTE:** You must download and install the latest Intel® RMM software for the Intel® RMM boards to work properly with your server board.



CAUTION: This unit must be operated with the TOP COVER installed to ensure proper cooling.

## 24 Software • BIOS, Drivers, and Operating System Installation

- Update the System Software:**
  - Boot from the Intel® Server Deployment Toolkit 2.0 CD.
  - Use the Wizard to access the latest versions on the Internet and update the BIOS, firmware, and FRUSDRs. (Downloaded files on a USB key may also be used).
- Configure your RAID Controller:** If using a RAID card, use the instructions provided with the RAID controller. If using on-board RAID, you must activate RAID in the BIOS setup. See the Intel® 5000 Series Chipsets Server Board Family Datasheet for more information.
- Install your Operating System:** Use the instructions provided with the RAID controller and with the operating system.
- Install Operating System Drivers:** With the operating system running, insert the Intel® Server Deployment Toolkit 2.0 CD. The Express Installer will autoun. Click Intel® SMaRT Tool at the left side of the screen. Follow the on-screen instructions. For information about Intel® SMaRT Tool, see <http://developer.intel.com/design/servers/smarttool/index.htm>.
- Install Intel® Remote Management Software:** If you installed the Intel® Remote Management Module and the Intel® RMM NIC, download and install the Intel® Remote Management Software from <http://support.intel.com/support/motherboards/server/chassis/sr2500>.
- Install Intel® SMaRT Tool (optional):** With the operating system running, insert the Intel® Server Deployment Toolkit 2.0 CD. The Express Installer will autoun. Click Intel® SMaRT Tool at the left side of the screen. Follow the on-screen instructions. For information about Intel® SMaRT Tool, see <http://developer.intel.com/design/servers/smarttool/index.htm>.

## Reference

### Front Panel Controls and Indicators

#### Intel® Local Control Panel

- |                        |                        |
|------------------------|------------------------|
| A. USB 2.0 Port        | E. Menu Control Button |
| B. LCD Display         | F. Menu Control Button |
| C. Menu Control Button | G. ID LED              |
| D. Menu Control Button | H. Power LED           |
| I. Power Button        | J. System Status LED   |
| K. NIC 2 Activity LED  | L. NIC 1 Activity LED  |
| M. HDD Activity LED    | N. Reset Button        |
| O. USB 2.0 Port        |                        |



#### Standard Control Panel

- |                 |                            |                 |
|-----------------|----------------------------|-----------------|
| A. NIC2         | E. Hard Drive Activity LED | H. System ID    |
| B. NIC1         | F. Status LED              | I. Reset Button |
| C. Power Button | G. System ID LED           | J. USB          |
| D. Power LED    | K. NMI (recessed)          | L. Video        |

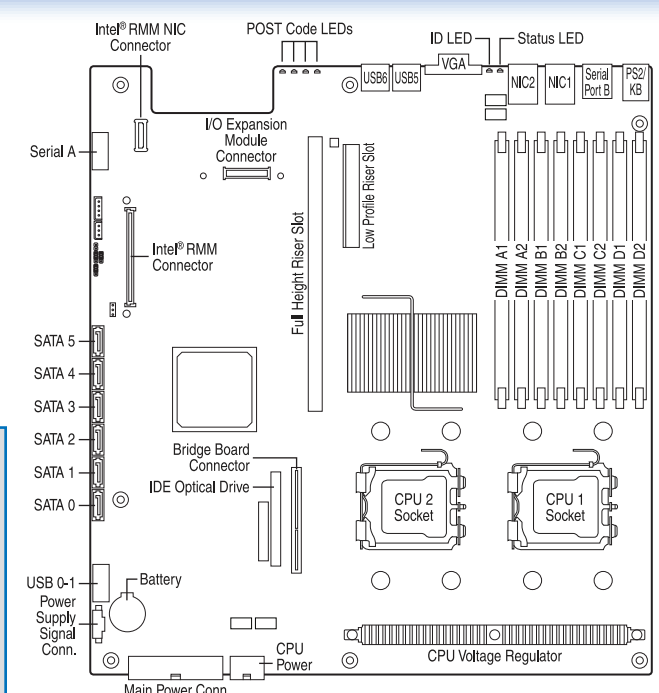


#### Optional Accessories and Order Codes

Tool-less Rail Kit	AXXHERAIL	
Cable Management Arm	AXXRACKCARM	
Basic Slide Rail Kit	AXXBASICRAIL	
Fixed Rack Brackets	AXXBRACKETS	
Bezel for Standard Control Panel	ADRBEZBLACK	
Bezel for Intel® Local Control Panel	ADRLCDBEZEL	
Intel® Remote Management Module	AXXRMM	
Slimline DVD-ROM/CD-ROM Drive		AXXDVDCLR
750W Power Supply		ASR2500PS
Sixth SAS/SATA Drive Mounting Kit		ASR2500SXDRV
USB Floppy		AXXUSBFLOPPY
SAS/SATA Tape Drive Mounting Kit		ASR2500SATAPE
Intel® Local Control Panel Module		ASR2500LCP

### Intel® Server Board S5000PAL Component Layout

See your Intel® Server Board S5000PAL User's Guide for expanded component and connection information.



A complete list of accessories and spares can be found at: [www.intel.com/go/serverbuilder](http://www.intel.com/go/serverbuilder)