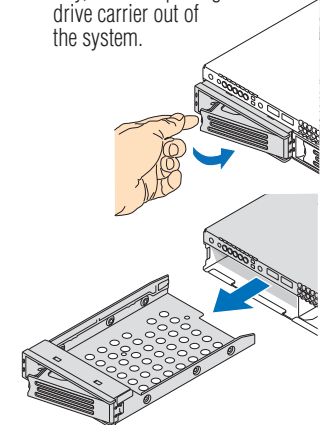


8

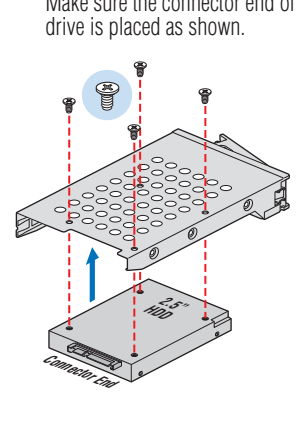
1. Remove the Drive Carrier

A Remove hot-swap drive carrier(s) by pushing the green latch towards the lever, opening the lever all the way, and then pulling the drive carrier out of the system.



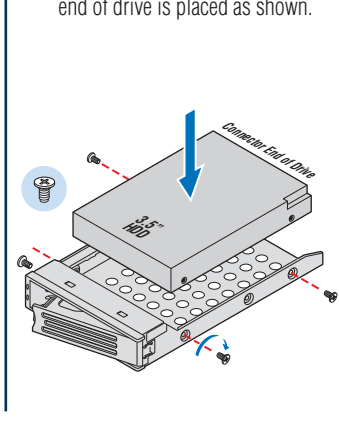
2. Install 2.5" Drive into Carrier

A Attach drive to carrier from the underside using four screws. Make sure the connector end of drive is placed as shown.



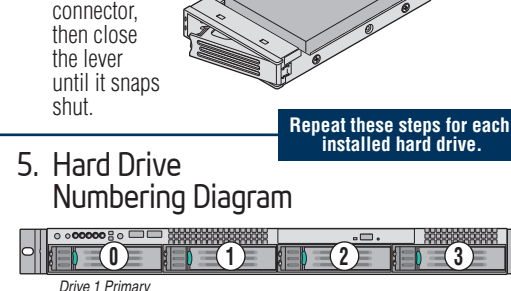
3. Install 3.5" Drive into Carrier

A Attach drive to carrier side rails using four screws. Make sure connector end of drive is placed as shown.



4. Install Drive Carrier into Chassis

A With the carrier lever in the OPEN position, slide drive assembly into chassis until it fully engages the backplane connector, then close the lever until it snaps shut.



Repeat these steps for each installed hard drive.

5. Hard Drive Numbering Diagram



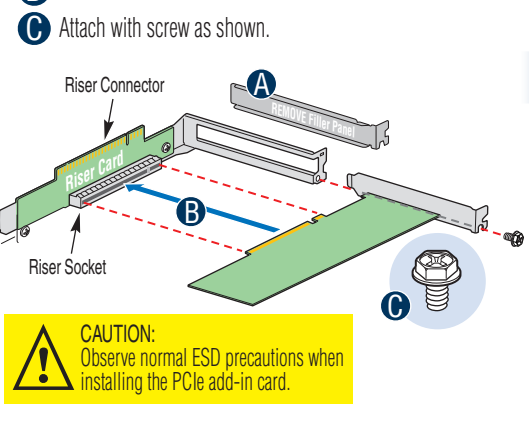
CAUTION: If you install less than four drives or devices, empty drive bays must be occupied by carriers to maintain proper system cooling. To avoid possible damage to your chassis, use only the carriers that came with your server system.

9

Install Add-in Card

Turn PCIe riser assembly up-side-down for this procedure to avoid damage to the riser card connector.

- A Remove filler panel from the add-in card slot.
- B Insert add-in card until it seats into the riser card socket.
- C Attach with screw as shown.



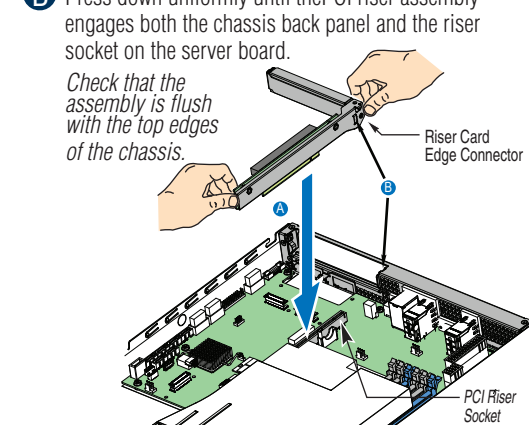
CAUTION: Observe normal ESD precautions when installing the PCIe add-in card.

10

Install the PCI Riser Assembly

- A Position riser card edge connector over the server board riser socket and align riser with the back panel opening of the chassis.
- B Press down uniformly until the PCI riser assembly engages both the chassis back panel and the riser socket on the server board.

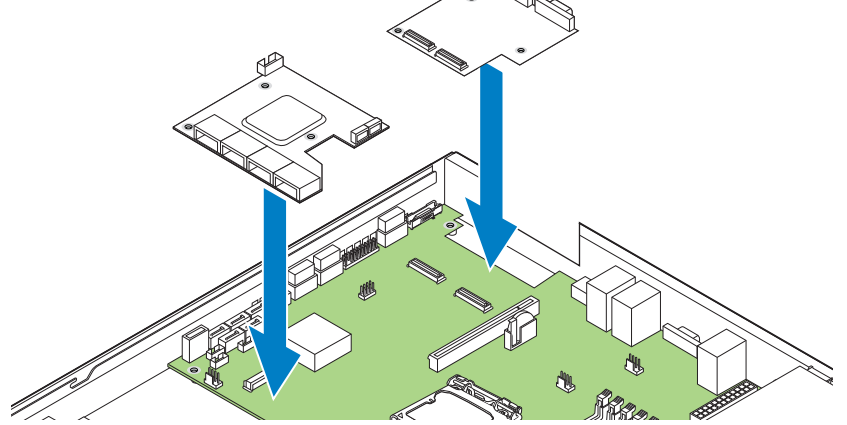
Check that the assembly is flush with the top edges of the chassis.



11

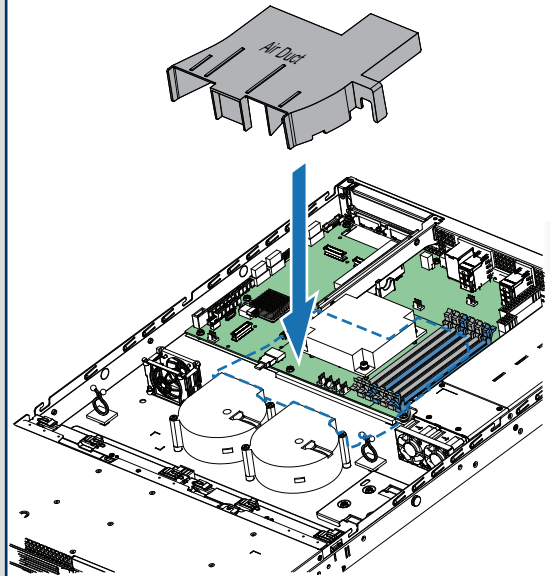
Install Intel® SAS module and I/O Expansion Module (Optional)

A Refer Intel® Server System Service Guide, available on the Intel® Server Deployment Toolkit CD or at <http://www.intel.com/support/motherboards/server/s3420gprx>, for detailed steps of installation of Intel® SAS Module and Intel® I/O Expansion Module.



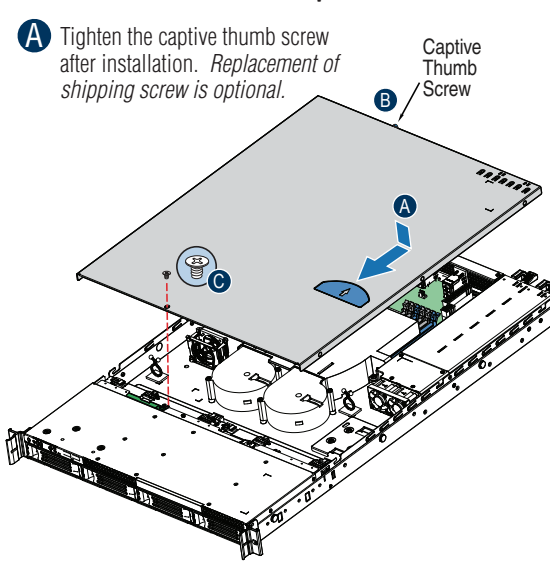
12

Install the Air Duct



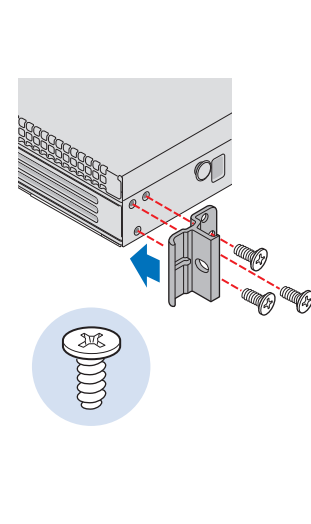
13

Install the Top Cover



14

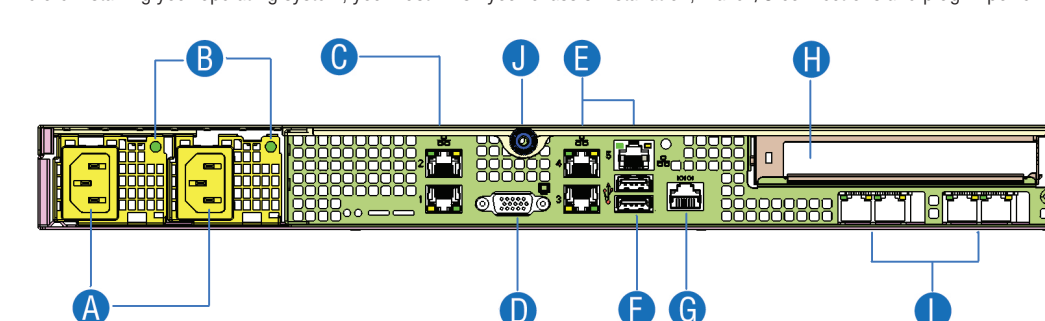
Install Rack Handles



15

Finishing Up

Before installing your operating system, you must finish your chassis installation, make I/O connections and plug in power.



- A. Redundant Power Supply Units
- B. Power Supply Status LED
- C. NIC 1 & 2 Connectors RJ-45
- D. Video Out
- E. NIC 3, 4 & 5 Connectors RJ-45
- F. Dual USB Ports
- G. RJ-45 Serial Port
- H. PCI Express* Add-in Slot
- I. IO Module External Connectors
- J. Thumb Screw

CAUTION: See your chassis documentation for power and grounding requirements.

16

Software • BIOS, Drivers, and Operating System Installation

A. Confirm BIOS Version: Look on the Server/System Management screen in the BIOS Setup Utility to determine the installed BIOS version. Compare this to the versions at: http://www.intel.com/p/en_US/support/highlights/server/s3420gp. If new versions are available, update the BIOS on your server. See the Service Guide on the Intel® Server Deployment Toolkit CD for update instructions.

B. Configure your RAID Controller: Use the instructions provided with the RAID controller.

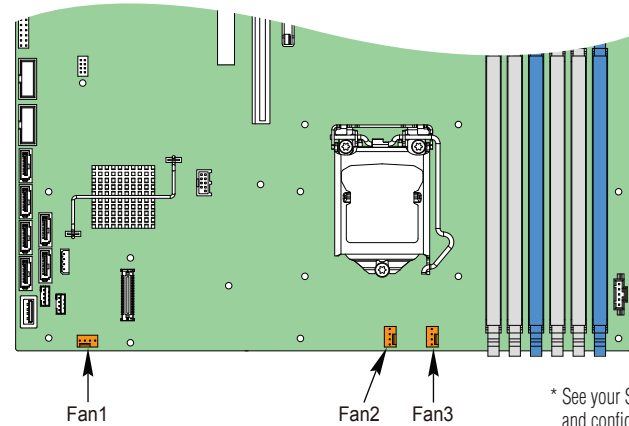
C. Install your Operating System: Use the instructions provided with the RAID controller and with the operating system.

D. Install Operating System Drivers: With the operating system running, insert the Intel® Server Deployment Toolkit CD. If using a Microsoft Windows® operating system, the Intel® Deployment Assistant will autorun and allow you to select the appropriate drivers to install. On other operating systems, browse the CD folders to locate and install the driver files.

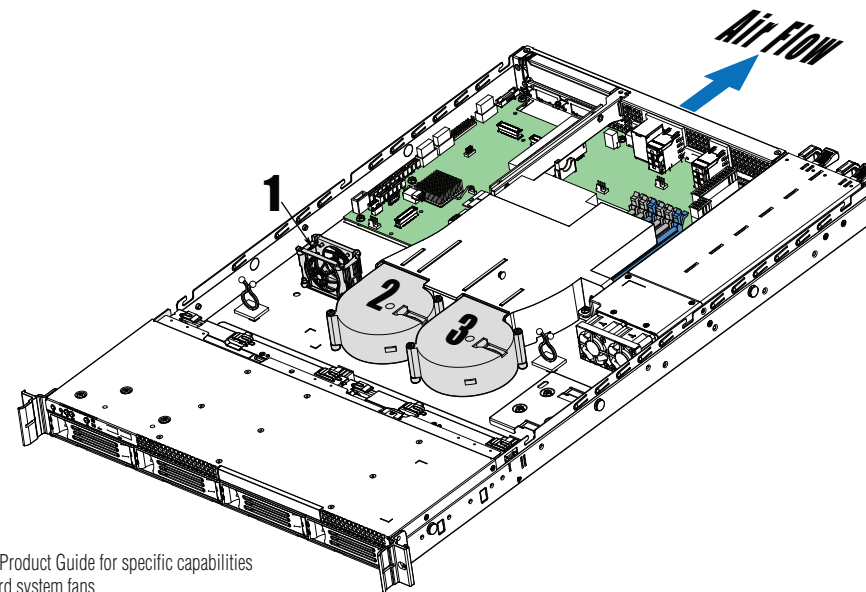
Chassis Fan Connections

See chassis diagram at right for system fan numbering information.

To remove fan, first unplug power cable to server board, then lift straight up and remove. When installing new fan, note air flow direction arrow. System airflow is from front to back.

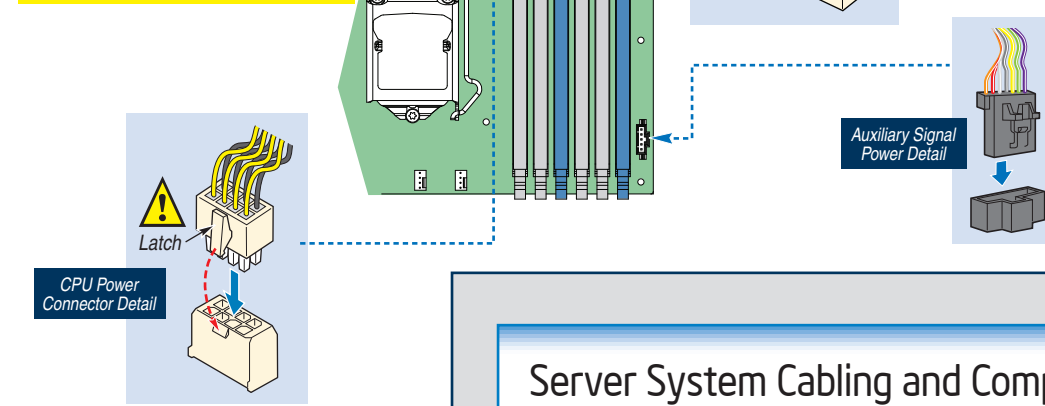


* See your Server Board S3420GP Product Guide for specific capabilities and configurations for server board system fans.



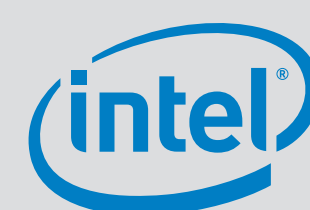
Server Board Power Connections

CAUTION: Note the location of the latch on each power cable connector and align it with the matching tab on each server board socket.



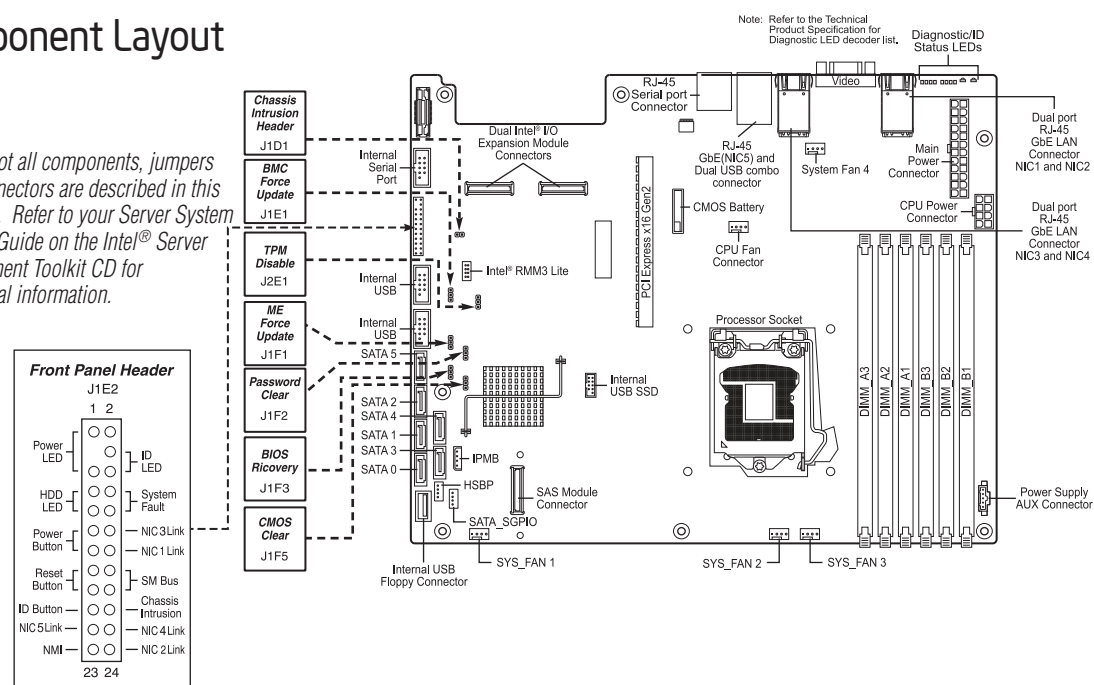
Available Documents	
Technical Specification Update	
Quick Reference Label	
Quick Start User Guide/System Configuration Guide	

Additional Reference documents available at: http://www.intel.com/p/en_US/support/highlights/server/s3420gp

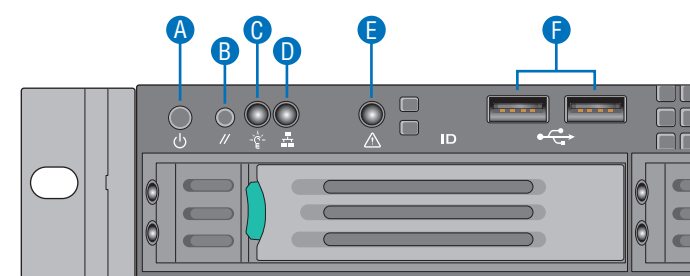


Intel® Server Board S3420GPRX Component Layout

Note: Not all components, jumpers and connectors are described in this diagram. Refer to your Server System Service Guide on the Intel® Server Deployment Toolkit CD for additional information.

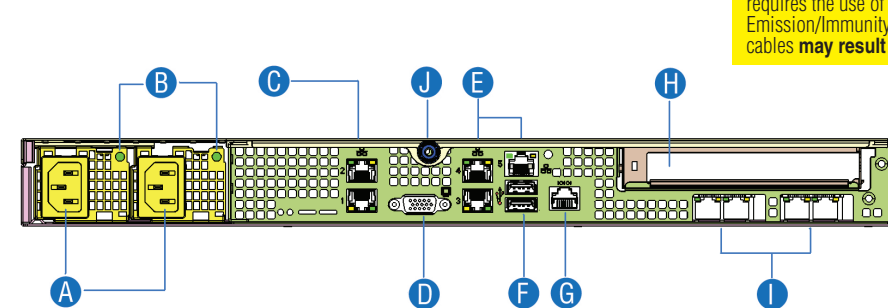


Front Panel Controls and Indicators



- A. Power/Sleep Button
- B. System Reset Button
- C. Power/Sleep LED
- D. System NIC 5 Activity LED
- E. System Status LED
- F. USB 2.0 Connectors - Port 0/1

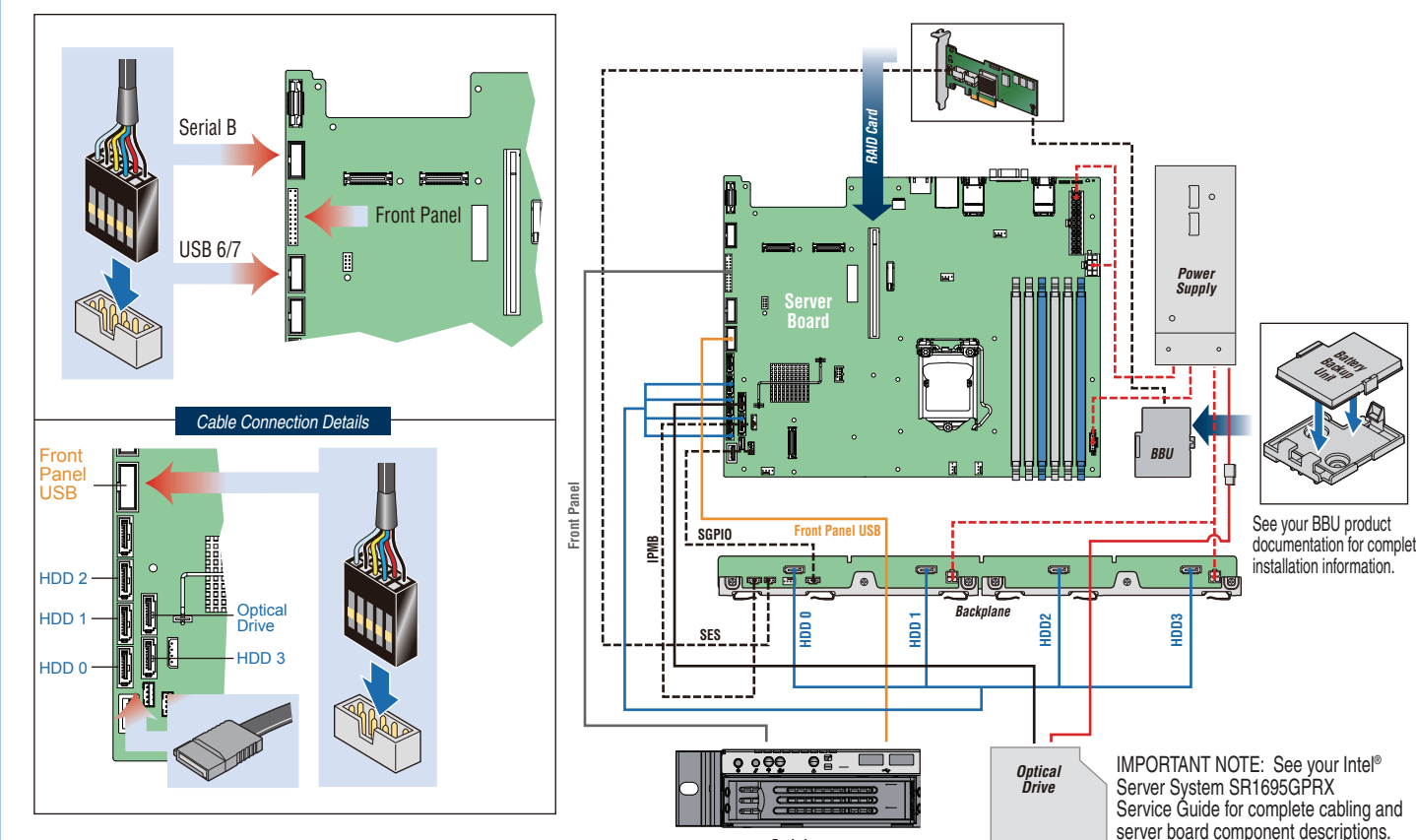
Back Panel Features and Indicators



IMPORTANT NOTE: The Intel® Server System SR1695GPRX requires the use of shielded LAN cable to comply with Emission/Immunity regulatory requirements. Use of non shield cables may result in product non-compliance.

- A. Redundant Power Supply Units
- B. Power Supply Status LED
- C. NIC 1 & 2 Connectors RJ-45
- D. Video Out
- E. NIC 3, 4 & 5 Connectors RJ-45
- F. Dual USB Ports
- G. RJ-45 Serial Port
- H. PCI Express* Add-in Slot
- I. IO Module External Connectors
- J. Thumb Screw

Server System Cabling and Component Diagram ... Quick Reference



IMPORTANT NOTE: See your Intel® Server System SR1695GPRX Service Guide for complete cabling and server board component descriptions.