

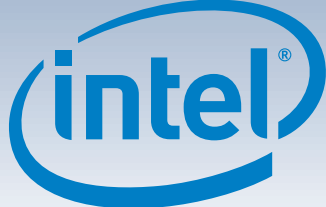
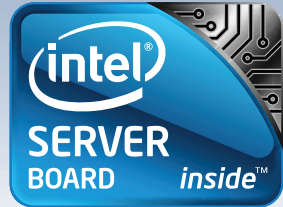
Intel® Server System SR1630HGP Quick Start User's Guide

Thank you for buying an Intel® Server System.
The following information will help you
assemble your Intel® Server System
SR1630HGP and install components.

This guide and other supporting documents
are located on the web at
http://www.intel.com/p/en_US/support/highlights/server/sr1630hgp

If you are not familiar with ESD (Electrostatic Discharge) procedures
used during system integration, please see the Intel® Server System
Service Guide, available on the Intel® Server Deployment Toolkit CD or
at http://www.intel.com/p/en_US/support/highlights/server/sr1630hgp

Read all cautions and warnings first before starting your
server system integration.



Minimum Hardware Requirements

To avoid integration difficulties and possible
damage to your system, make sure you
have components from each category below.

- **Heat Sink:**
 - 1U passive heat sink.
- **Memory:**
 - **Memory Type:** Minimum of one 1GB
DDR3 800/1066/1333MHz ECC
RDIMM or 1066/1333MHz ECC
UDIMM.
- **Hard Disk Drives:**
 - SATA
- **Power:**
 - Minimum of 350W with 3A of standby
current, which meets the SSI EPS 12V
specification.

1 Preparing the Chassis

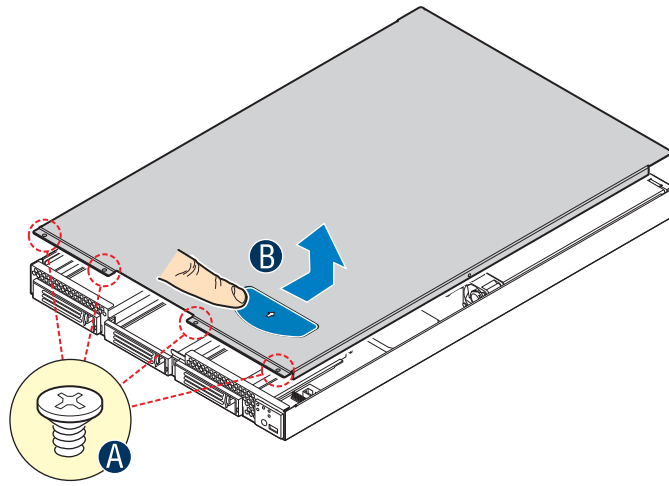
Place your Intel® Server Chassis on a flat anti-
static surface to perform the following integration
procedures. Always touch the chassis frame first,
before reaching inside to make server board
connections or to install components.

Observe normal ESD (Electrostatic Discharge)
procedures.

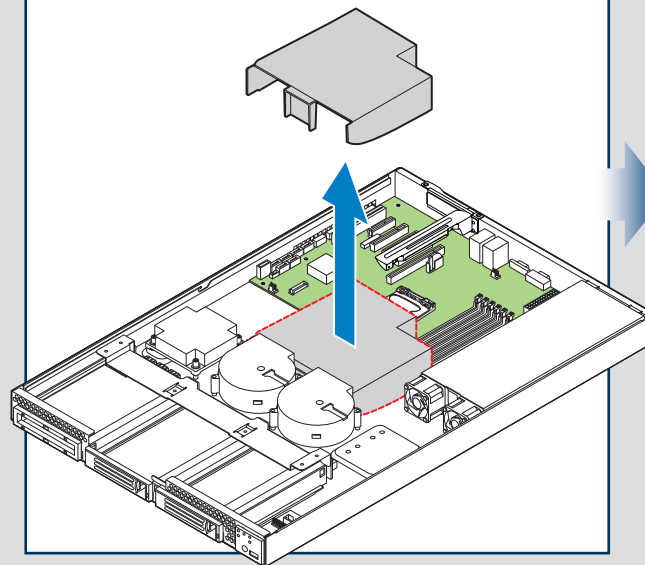
Place your
Intel® Server Chassis on a flat anti-static surface
to perform the following integration procedures.
Always touch the chassis frame first, before
reaching inside to make server board
connections or to install components.

2 Remove Top Cover

- Remove the four screws at the front.
- Using the blue rubber contact, push the
top cover rearward to release, then
lift upward and remove.



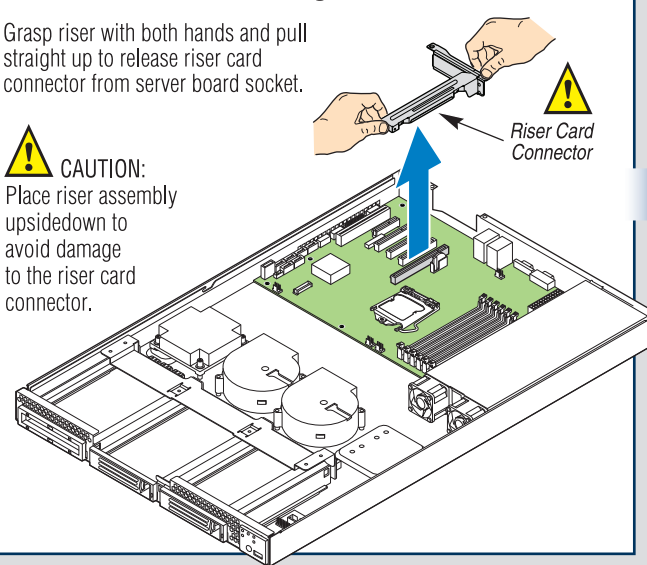
3 Remove Air Baffle



4 Remove Add-in Card Riser Assembly

Grasp riser with both hands and pull
straight up to release riser card
connector from server board socket.

CAUTION:
Place riser assembly
upside down to
avoid damage
to the riser card
connector.



IMPORTANT!
Before proceeding further,
do the following:

Check your Intel® Server System for
disconnected or loose cables and components
that may have occurred during shipping.

Warning

Read all caution and safety
statements in this document
before performing any of the
instructions. Also see the Intel®
Server Board and Server Chassis
Safety Information document at:
<http://support.intel.com/support/motherboards/server/sb/cs-010770.htm> for complete safety information.

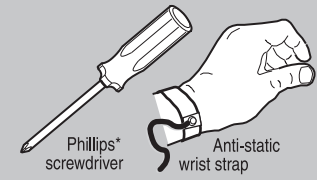
Warning

Installation and service of
this product should only be
performed by qualified service
personnel to avoid risk of injury from
electrical shock or energy hazard.

Caution

Observe normal ESD
(Electrostatic Discharge)
procedures during system
integration to avoid possible
damage to server board and/or
other components.

Tools Required



Intel is a registered trademark of Intel Corporation or its
subsidiaries in the United States and other countries.
*Other names and brands may be claimed as the
property of others. Copyright © 2011, Intel Corporation.
All rights reserved.

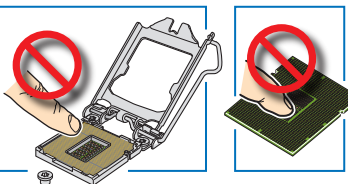
E73399-004



5 Install the Processor

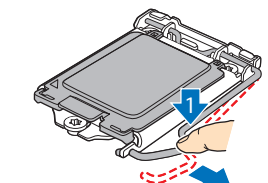
Cautions:

- When removing the protective
cover, DO NOT TOUCH the
gold socket wires.
- To avoid damage, DO NOT
DROP the cover onto the
socket wires or components.
- When unpacking a processor,
hold by the edges only to avoid
touching the gold contact wires.



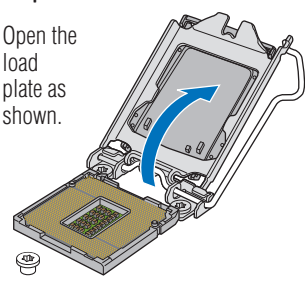
A. Open the Socket Lever

- Push the lever handle down
and away from the socket to
release it.



B. Open the Load Plate

Open the
load plate as
shown.

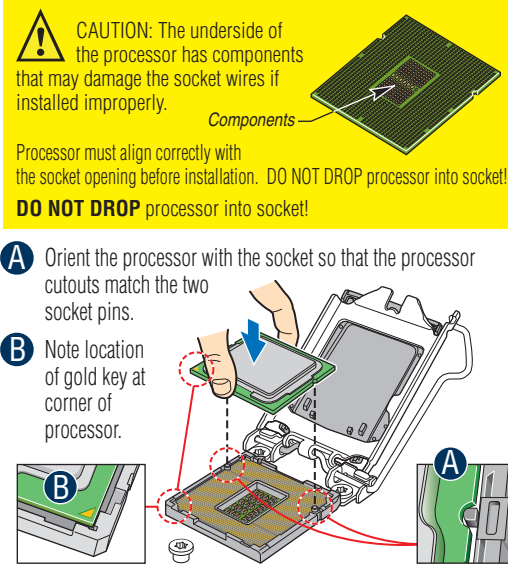


D. Install the Processor

CAUTION: The underside of
the processor has components
that may damage the socket wires if
installed improperly.

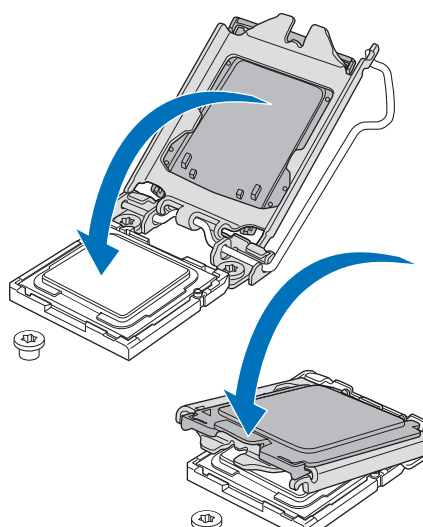
Processor must align correctly with
the socket opening before installation. DO NOT DROP processor into socket!
DO NOT DROP processor into socket!

- Orient the processor with the socket so that the processor
cutouts match the two
socket pins.
- Note location of gold key at
corner of
processor.



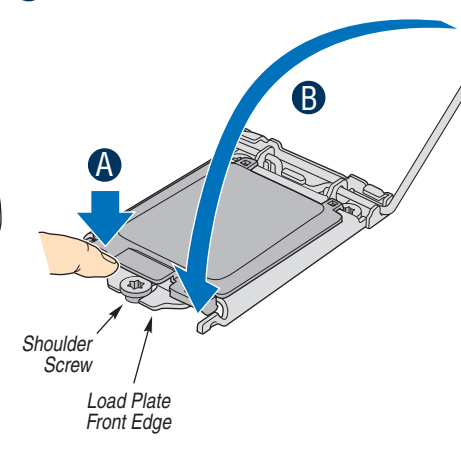
E. Close the Load Plate

Carefully lower the load plate over the processor.



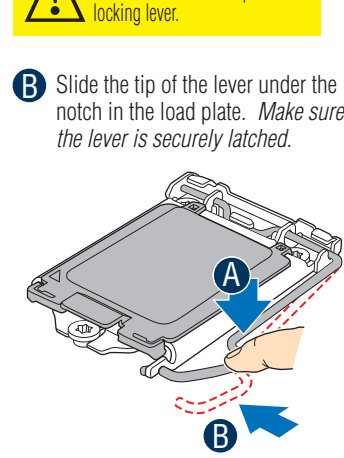
F. Engage the Load Plate

- Make sure the front edge of the load plate slides
under the shoulder screw as the lever is lowered.
- Close the load plate locking lever.



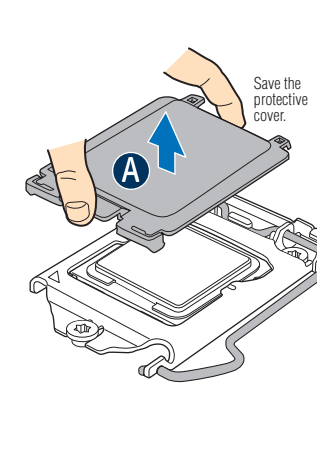
G. Latch the Locking Lever

- Push down on the locking lever.
- Slide the tip of the lever under the
notch in the load plate. Make sure
the lever is securely latched.



H. Remove the Cover

Carefully lift the cover straight up as
shown.

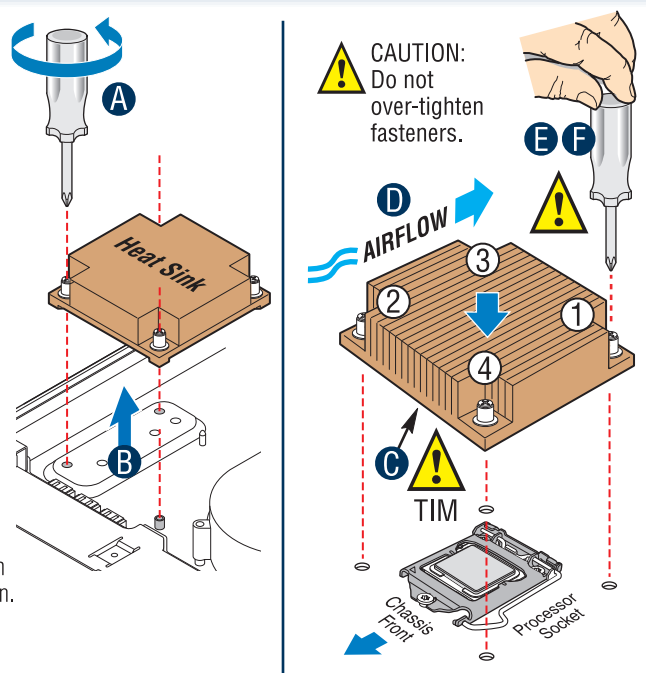


6 Install Heat Sink

- Loosen the three captive fasteners securing
the heat sink to the chassis.
- Remove heat sink from the shipping position.
- CAUTION:** The heat sink has thermal interface
material (TIM) on the underside of it. Use
caution so that you do not damage the thermal
interface material.
Use gloves to avoid sharp edges.
- Remove the protective film on the TIM if present.
- Align heat sink fins to the front and back of
the chassis for correct airflow. Airflow goes
from front-to-back of chassis.

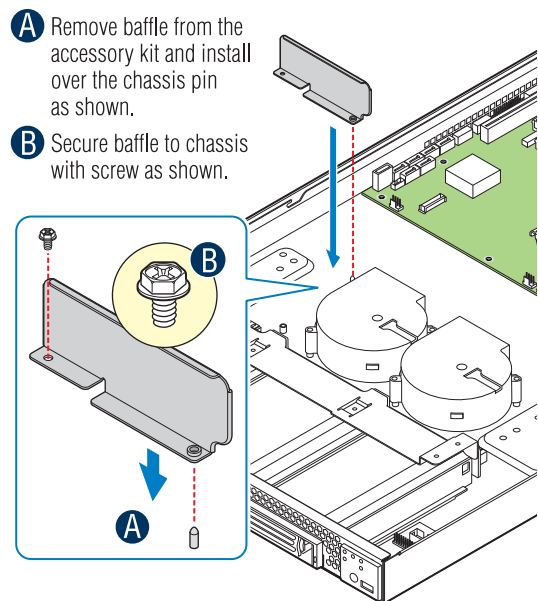
The heat sink has four captive fasteners and should
be tightened using the following procedure:

- Using a #2 Phillips® screwdriver, finger-tighten each
fastener diagonally, according to the numbers shown.
- Securely re-tighten each fastener again
in the same order as performed in Step E.



7 Install Baffle

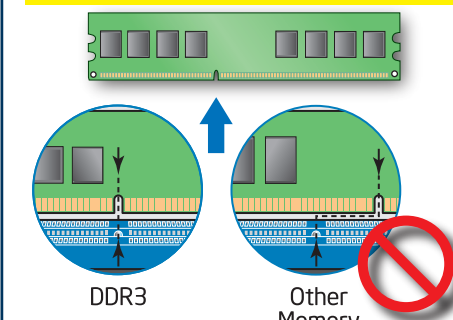
- Remove baffle from the
accessory kit and install
over the chassis pin
as shown.
- Secure baffle to chassis
with screw as shown.



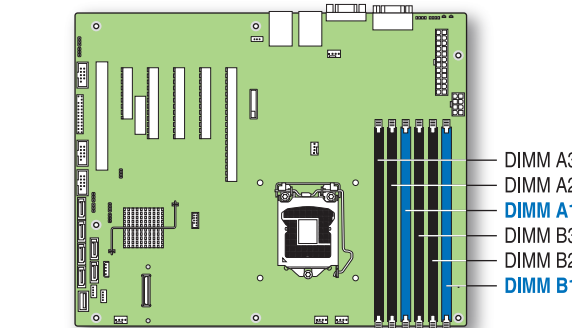
8 Install DIMM Memory Modules

DDR3 DIMM Memory Identification:

- CAUTION:** Observe normal ESD (Electrostatic Discharge)
procedures to avoid possible damage to system components.
- This server board supports up to 6 DDR3-800/1066/
1333 MHz ECC RDIMM and 1066/1333 MHz ECC
UDIMM.



Memory Configurations and Population Order:



Memory Type: Minimum of one 1 GB, DDR3 800/1066/1333
MHz ECC RDIMM or 1066/1333 MHz ECC UDIMM compliant 240-pin DIMM.

Note: For additional memory configurations, see the User Guide on
the Intel® Server Deployment Toolkit CD that accompanied your
Intel® Server Board S3420GP, or go to:
<http://www.intel.com/support/motherboards/server/s3420gp/sb/CS-030744.htm>

Memory sizing and configuration is supported only for qualified
DIMMs approved by Intel®. For a list of supported memory,
see the tested memory list at
<http://www.intel.com/support/motherboards/server/s3420gp/sb/CS-030738.htm>

To Install DIMMs:

CAUTION: Avoid touching contacts when
handling or installing DIMMs.

- Open both DIMM socket levers.
- Note location of alignment notch.
- Insert DIMM making sure the connector edge
of the DIMM aligns correctly with the slot.
- Push down firmly on the DIMM until it
snaps into place and both levers close.
- IMPORTANT!** Visually check that each
latch is fully closed and correctly
engaged with each DIMM edge slot.

