

# Intel® Desktop Board DG41CN Quick Reference

English - 中文 - 한국어 - 日本語 - Polski - Italiano - Français - Deutsch - Русский - Português (Brasil) - Español

This guide contains basic instructions for installing the desktop board.

本指南包括安装桌面主板的基本指导说明。

본 안내서는 데스크톱 보드를 설치하기 위한 기본 지침을 제공합니다.

このガイドには、デスクトップ ボードの基本的なインストール手順が記載されています。

Niniejsza instrukcja zawiera podstawowe informacje dotyczące instalacji płyty głównej.

Questo manuale contiene le istruzioni di base per l'installazione della scheda.

Ce guide fournit des instructions de base portant sur l'installation de la carte pour PC de bureau.

Dieses Handbuch enthält grundlegende Anleitungen zur Installation des Desktop-Motherboard.

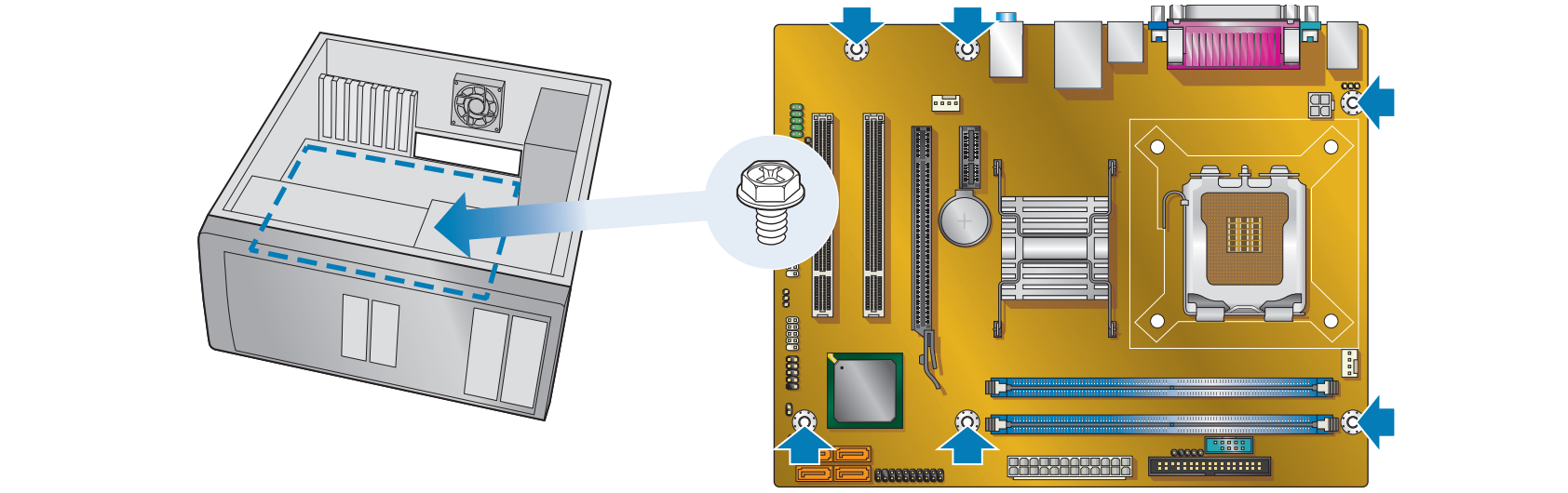
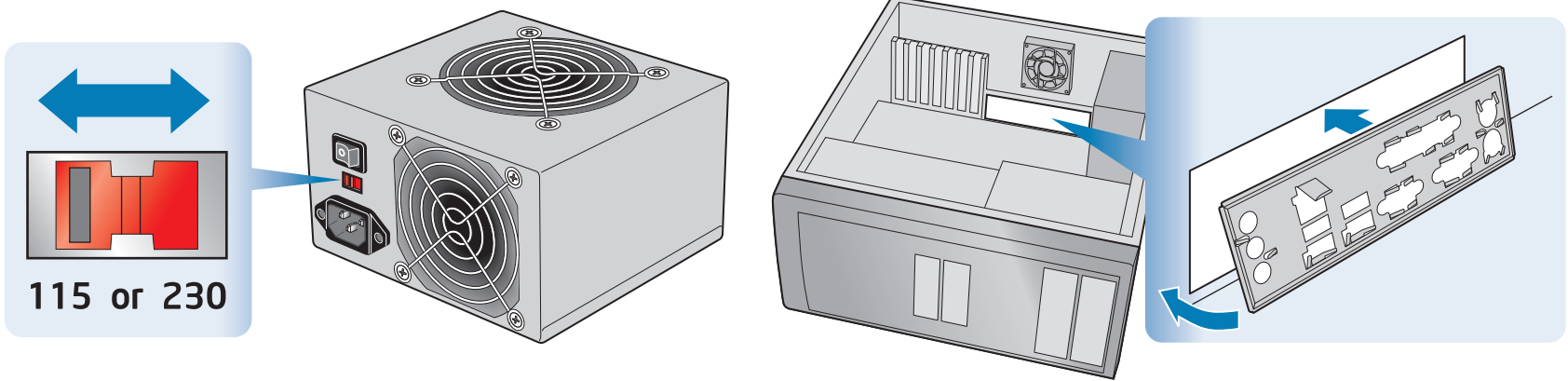
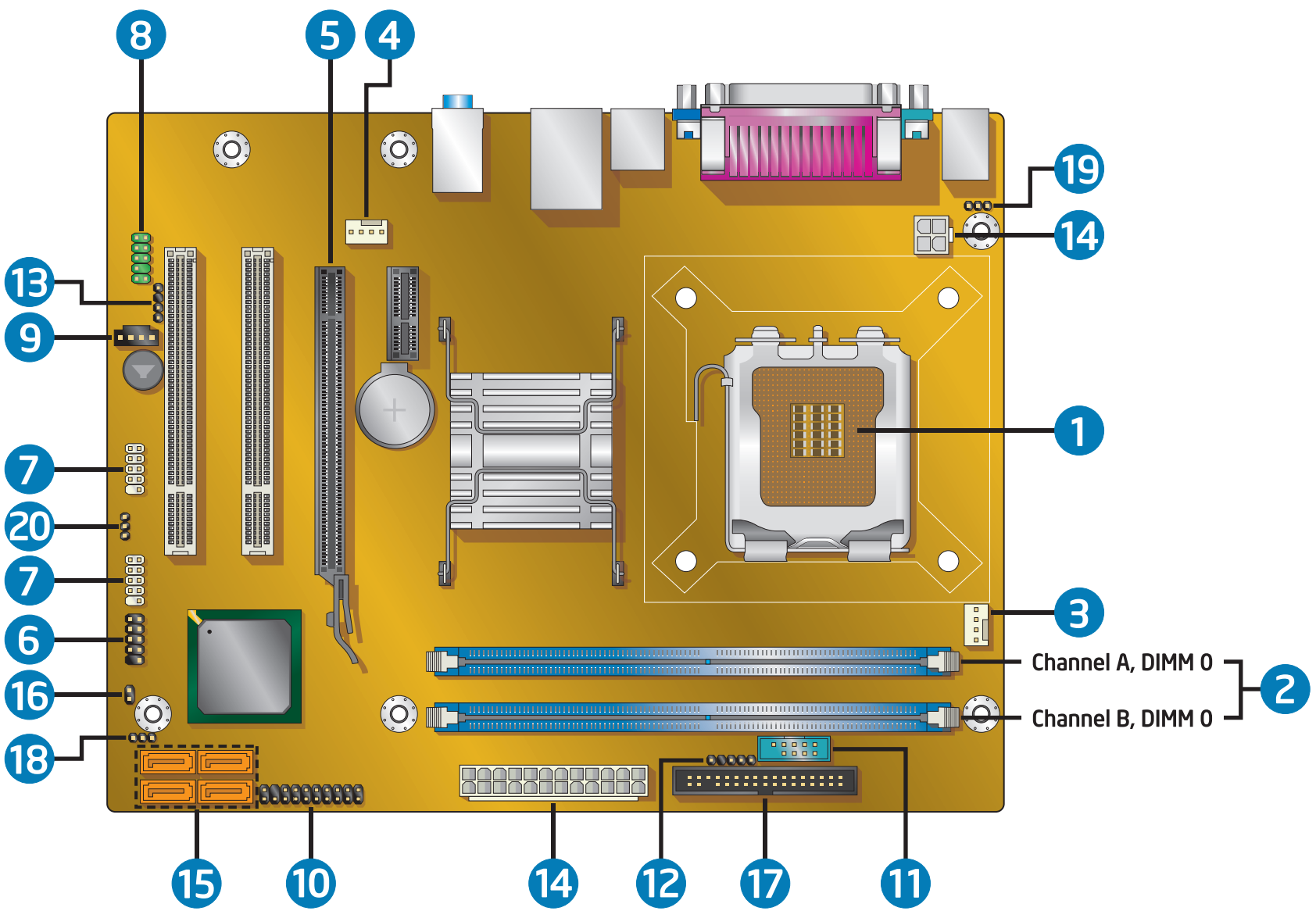
В этом руководстве содержатся основные инструкции по установке системной платы для настольного компьютера.

Este guia contém instruções básicas para a instalação da placa de desktop.

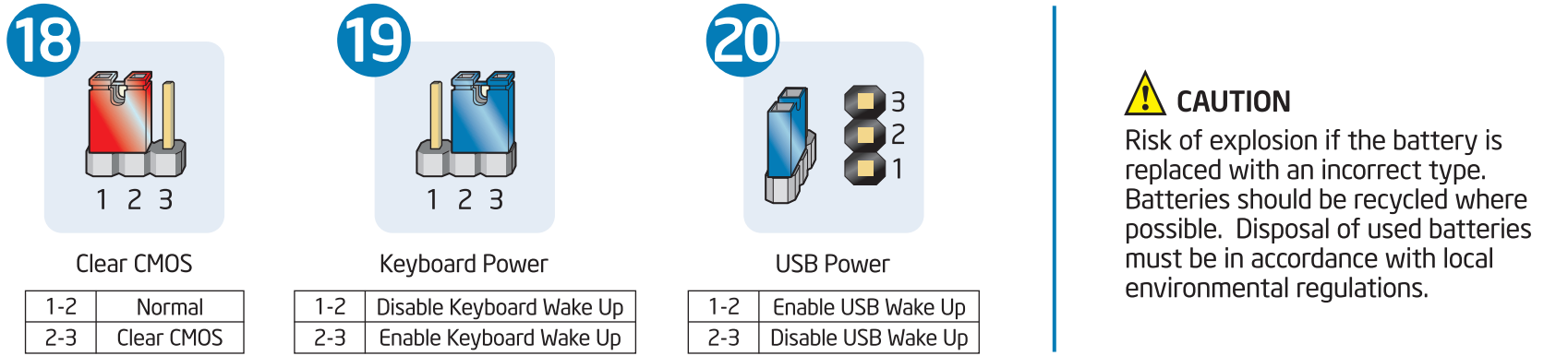
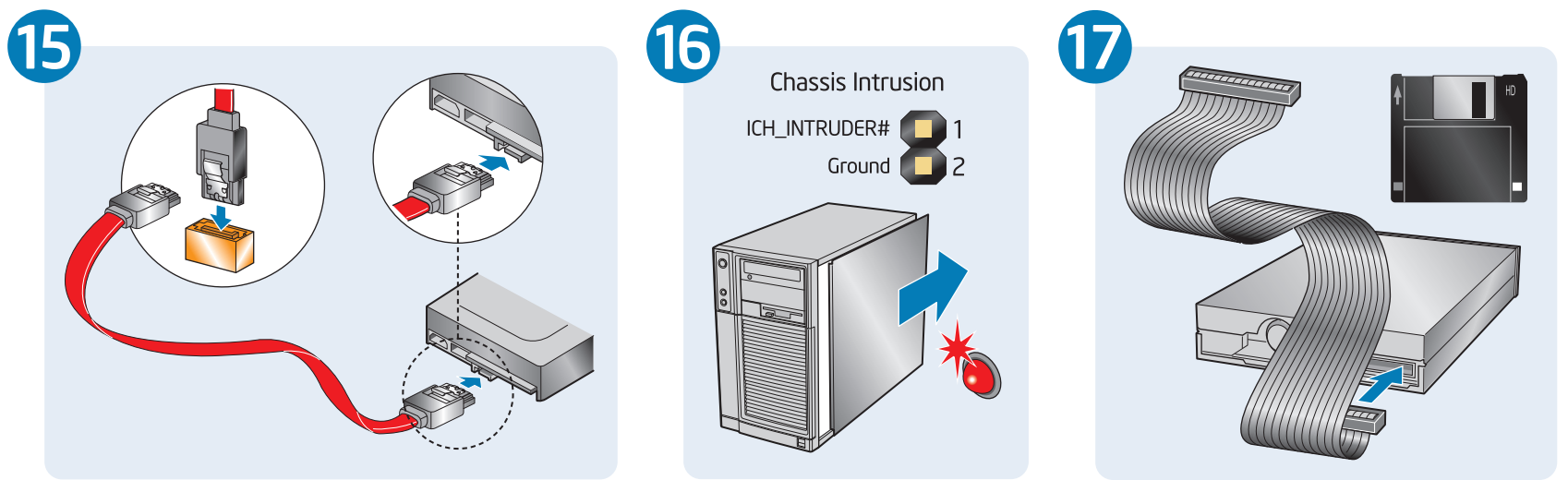
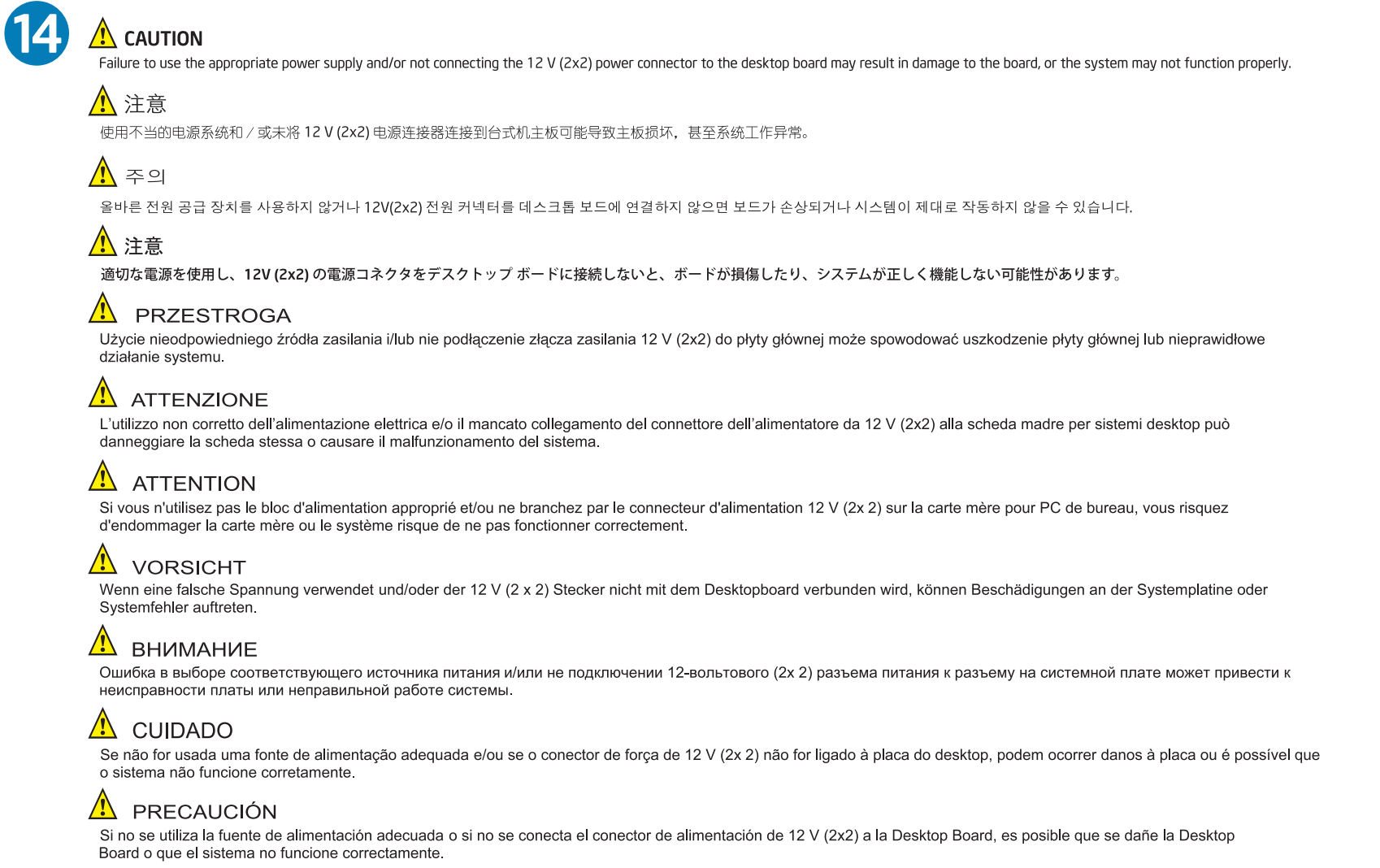
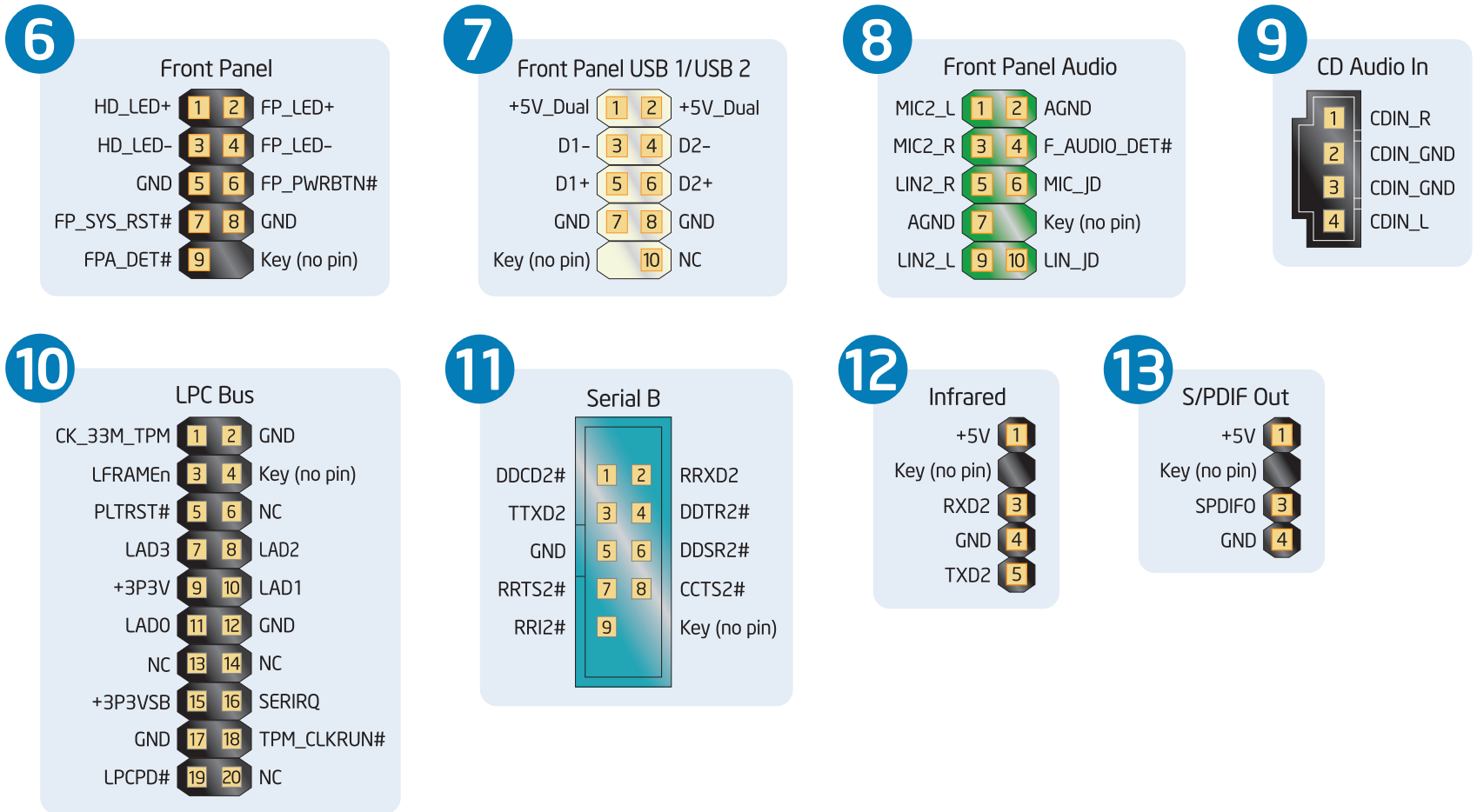
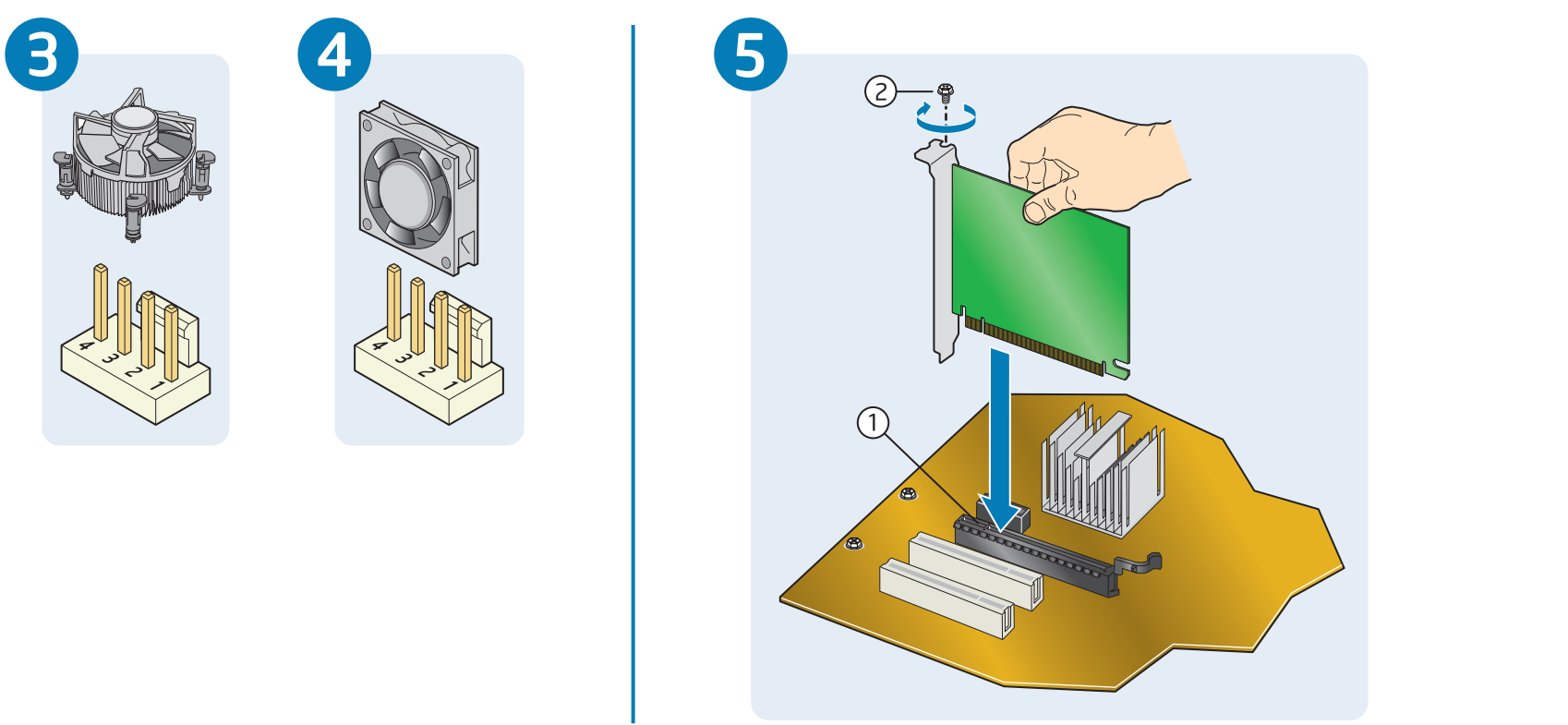
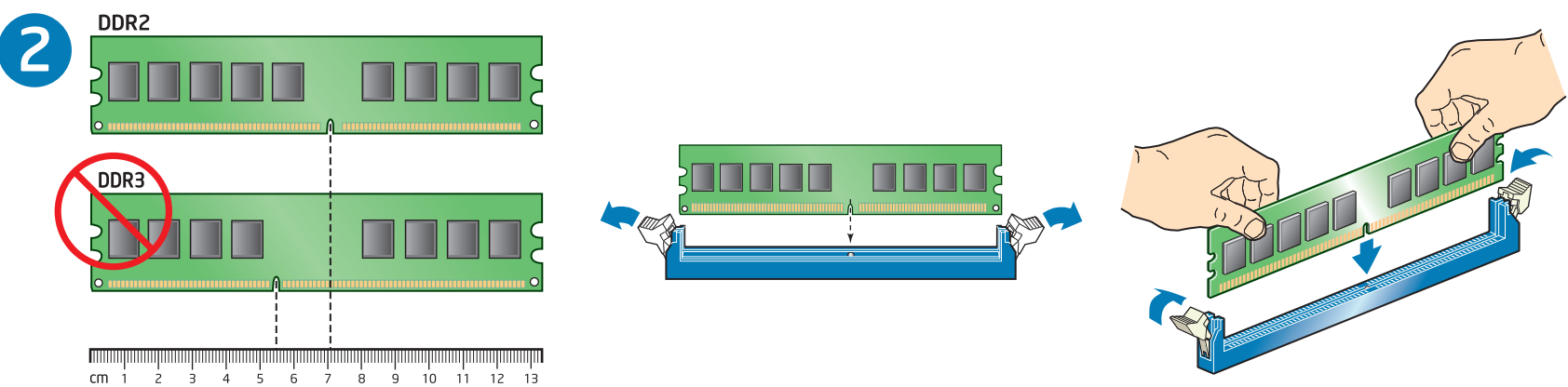
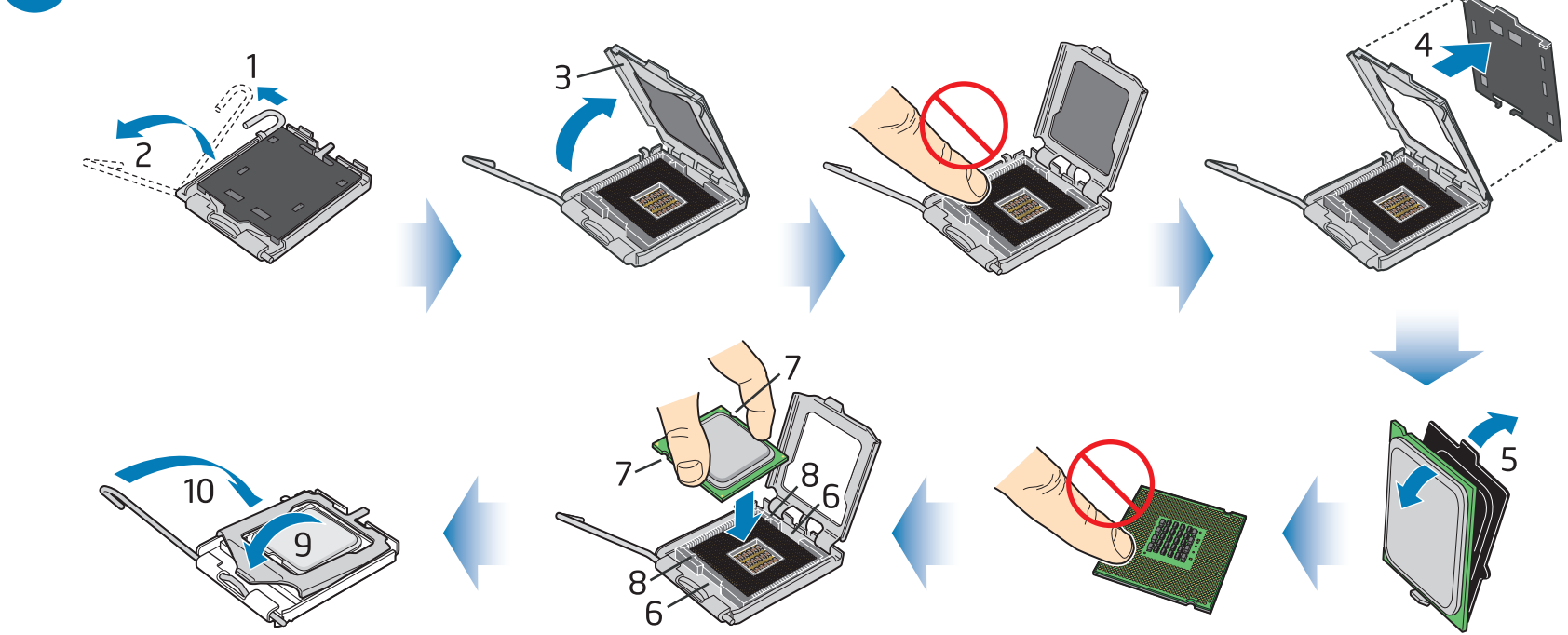
Esta guía contiene instrucciones básicas para la instalación de la placa de escritorio.

사용자안내문(3급기기):이 기기는 가정용으로 전자파 적합등록을 한기기로서 주거지역에서는 물론 모든 지역에서 사용할 수 있습니다.

E81343-001



1 For CPU compatibility go to: <http://processormatch.intel.com>



**CAUTION**  
Risk of explosion if the battery is replaced with an incorrect type. Batteries should be recycled where possible. Disposal of used batteries must be in accordance with local environmental regulations.

