



Configuring Intel® Compute Stick STK2MV64CC/L for Intel® AMT User's Guide

Featuring *Intel® SCS AMT Configuration Utility*

September 2017

Order Number: J79418-001

The Intel Compute Stick STK2MV64CC/L may contain design defects or errors known as errata that may cause the product to deviate from published specifications. Current characterized errata are documented in the Intel Compute Stick STK2MV64CC Technical Product Specification and Intel Compute Stick STK2MV64CC Specification Update.

Revision History

| Revision | Revision History | Date |
|----------|---|----------------|
| 001 | First release of <i>Configuring Intel Compute Stick STK2MV64CC/L for Intel AMT User's Guide</i> | September 2017 |

Disclaimer

This User's Guide applies to only the standard Intel Compute Sticks STK2MV64CC and STK2MV64CCL.

INFORMATION IN THIS DOCUMENT IS PROVIDED IN CONNECTION WITH INTEL® PRODUCTS. NO LICENSE, EXPRESS OR IMPLIED, BY ESTOPPEL OR OTHERWISE, TO ANY INTELLECTUAL PROPERTY RIGHTS IS GRANTED BY THIS DOCUMENT. EXCEPT AS PROVIDED IN INTEL'S TERMS AND CONDITIONS OF SALE FOR SUCH PRODUCTS, INTEL ASSUMES NO LIABILITY WHATSOEVER, AND INTEL DISCLAIMS ANY EXPRESS OR IMPLIED WARRANTY, RELATING TO SALE AND/OR USE OF INTEL PRODUCTS INCLUDING LIABILITY OR WARRANTIES RELATING TO FITNESS FOR A PARTICULAR PURPOSE, MERCHANTABILITY, OR INFRINGEMENT OF ANY PATENT, COPYRIGHT OR OTHER INTELLECTUAL PROPERTY RIGHT. UNLESS OTHERWISE AGREED IN WRITING BY INTEL, THE INTEL PRODUCTS ARE NOT DESIGNED NOR INTENDED FOR ANY APPLICATION IN WHICH THE FAILURE OF THE INTEL PRODUCT COULD CREATE A SITUATION WHERE PERSONAL INJURY OR DEATH MAY OCCUR.

All Intel Compute Sticks are evaluated as Information Technology Equipment (I.T.E.) for use in personal computers (PC) for installation in homes, offices, schools, computer rooms, and similar locations. The suitability of this product for other PC or embedded non-PC applications or other environments, such as medical, industrial, alarm systems, test equipment, etc. may not be supported without further evaluation by Intel.

Intel Corporation may have patents or pending patent applications, trademarks, copyrights, or other intellectual property rights that relate to the presented subject matter. The furnishing of documents and other materials and information does not provide any license, express or implied, by estoppel or otherwise, to any such patents, trademarks, copyrights, or other intellectual property rights.

Intel may make changes to specifications and product descriptions at any time, without notice.

Designers must not rely on the absence or characteristics of any features or instructions marked "reserved" or "undefined." Intel reserves these for future definition and shall have no responsibility whatsoever for conflicts or incompatibilities arising from future changes to them.

Intel processor numbers are not a measure of performance. Processor numbers differentiate features within each processor family, not across different processor families: Go to: [Learn About Intel® Processor Numbers](#)

Intel Compute Sticks may contain design defects or errors known as errata, which may cause the product to deviate from published specifications. Current characterized errata are available on request.

Contact your local Intel sales office or your distributor to obtain the latest specifications before placing your product order.

Intel and Intel Core are trademarks of Intel Corporation in the U.S. and/or other countries.

* Other names and brands may be claimed as the property of others.

Copyright © 2017 Intel Corporation. All rights reserved.

Product Identification Information

Intel® Compute Stick Identification Information

| Intel Product Code | MM# | Differentiating Features |
|--------------------|--------|---|
| BLKSTK2MV64CC | 944715 | Stick with US, UK, EU, AU power adapters, no OS |
| BLKSTK2MV64CCL | 947056 | Stick with CN, IN, BR, AR, KR power adapters, no OS |



NOTE

In this document, the use of "Intel Compute Stick" will refer to the STK2MV64CC and STK2MV64CCL versions of the Intel Compute Stick.

Preface

Configuration of a personal computer for use with Intel® Active Management Technology (Intel® AMT) typically involves an initial setup using wired LAN, even if the user intends to use Wireless LAN (WLAN) for management. As the Intel Compute Stick does not contain a wired LAN device, this presents a challenge. This configuration guide provides instructions for setting up Intel AMT on the Intel Compute Stick using only WLAN. It does not provide details on Intel AMT nor on other Intel vPro technologies.

Intended Audience

The guide is intended to provide detailed instruction about how to configure Intel AMT on the Intel Compute Stick using only WLAN. It assumes some basic knowledge of Intel AMT and other Intel vPro-related technologies. It is specifically *not* intended for general audiences.

What This Document Contains

| Chapter | Description |
|---------|--|
| 1 | Product description of the Intel Compute Stick |
| 2 | Intel AMT configuration of the Intel Compute Stick |

Typographical Conventions

This section contains information about the conventions used in this specification. Not all of these symbols and abbreviations appear in all specifications of this type.

Notes, Cautions, and Warnings



NOTE

Notes call attention to important information.



CAUTION

Cautions are included to help you avoid damaging hardware or losing data.

Contents

| | |
|---|-----------|
| Revision History..... | ii |
| Product Identification Information..... | iii |
| Preface | iv |
| Intended Audience..... | iv |
| What This Document Contains | iv |
| Typographical Conventions | iv |
| Contents | v |
| 1 Product Description | 7 |
| 1.1 Overview | 7 |
| 2 Product Configuration | 8 |
| 2.1 Overview | 8 |
| 2.2 Configuring Intel AMT | 8 |
| Figures | |
| Figure 1. Launching ACUWizard.exe as <i>administrator</i> | 8 |
| Figure 2. Intel ACU Welcome Screen | 9 |
| Figure 3. Intel ACU System Information – Verifying Configuration State..... | 9 |
| Figure 4. Intel ACU Configuration Options | 10 |
| Figure 5. Intel ACU - Configure via Windows | 10 |
| Figure 6. Intel ACU - Configuration Profile Wizard Welcome Screen | 11 |
| Figure 7. Configuration Profile Wizard: Optional Settings..... | 11 |
| Figure 8. Configuration Profile Wizard: Optional Settings: Network Configuration..... | 12 |
| Figure 9. Configuration Profile Wizard: System Settings | 12 |
| Figure 10. Configuration Profile Wizard: Finish Screen | 13 |
| Figure 11. Intel ACU - Profile Encryption | 13 |
| Figure 12. Intel ACU - Profile Encryption: Configuring..... | 14 |
| Figure 13. Intel Management and Security Status Pop-up: Configured Notice..... | 14 |
| Figure 14. Intel ACU - Configuration Complete..... | 14 |
| Figure 15. Intel Management and Security Status <i>General</i> Tab..... | 15 |
| Figure 16. Intel Management and Security Status <i>Advanced</i> Tab..... | 15 |
| Figure 17. Intel AMT Web UI..... | 16 |
| Figure 18. Intel AMT Web UI Login | 16 |
| Figure 19. Intel AMT Web UI System Status..... | 16 |
| Figure 20. Intel AMT Remote Web UI | 17 |
| Figure 21. Intel AMT Remote Web UI Login..... | 17 |
| Figure 22. Intel AMT Remote Web UI System Status..... | 17 |

1 Product Description

1.1 Overview

Intel® Compute Stick STK2MV64CC/L contains the features necessary to fully support Intel® Active Management Technology (Intel® AMT). These include:

- Intel® Core™ m5-6Y57 Processor
- Intel® Wireless-AC 8260 + BT 4.2
- Support for Intel® Virtualization Technology (Intel® VT-x)
- Support for Intel® Virtualization for Directed I/O (Intel® VT-d)
- Support for Intel® Trusted Execution Technology (Intel® TXT)
- Discrete Trusted Platform Module (TPM) v2.0.

This guide makes extensive use of *Intel® Setup and Configuration Software (Intel SCS) AMT Configuration Utility (ACU) Wizard* for initial configuration of the Intel Compute Stick. The ACU Wizard can be found in either the *Configurator Download Package* or in the full *Intel SCS Download Package*.

| For information about... | Refer to: |
|---|---|
| Support for <i>Intel Setup and Configuration Software</i> | http://www.intel.com/content/www/us/en/support/software/manageability-products/intel-setup-and-configuration-software-intel-scs.html |
| Downloads for <i>Intel Setup and Configuration Software</i> | https://downloadcenter.intel.com/download/26505/Intel-Setup-and-Configuration-Software-Intel-SCS-?product=39104 |

2 Product Configuration

2.1 Overview

Intel AMT can be provisioned in two different modes: Client Control Mode (CCM), also called Host Based Configuration (HBC), and Admin Control Mode, or ACM. This guide will focus on using the *Intel ACU (AMT Configuration Utility) Wizard* to configure the Intel Compute Stick in CCM.

Assumptions:

- Windows* 10 Pro is installed with the latest drivers and BIOS available from Intel Download Center.
- Intel AMT has not been previously configured on the Intel Compute Stick (first-time configuration).

For information about...

Intel Compute Stick BIOS and Drivers

Refer to:

<https://downloadcenter.intel.com/product/91979/>

2.2 Configuring Intel AMT

1. Power on the Intel Compute Stick and boot into Windows.
2. Check to see if Windows .NET Framework 3.5 is enabled (*Control Panel – Programs and Features – Turn Windows features on or off*). Enable it and reboot if not.
3. Copy the *ACU_Wizard* folder from the Intel SCS or Configurator package (from [1.1 Overview](#)) onto the Intel Compute Stick.
4. Run the *ACUWizard.exe* **as administrator** (
5. **Figure 1).**

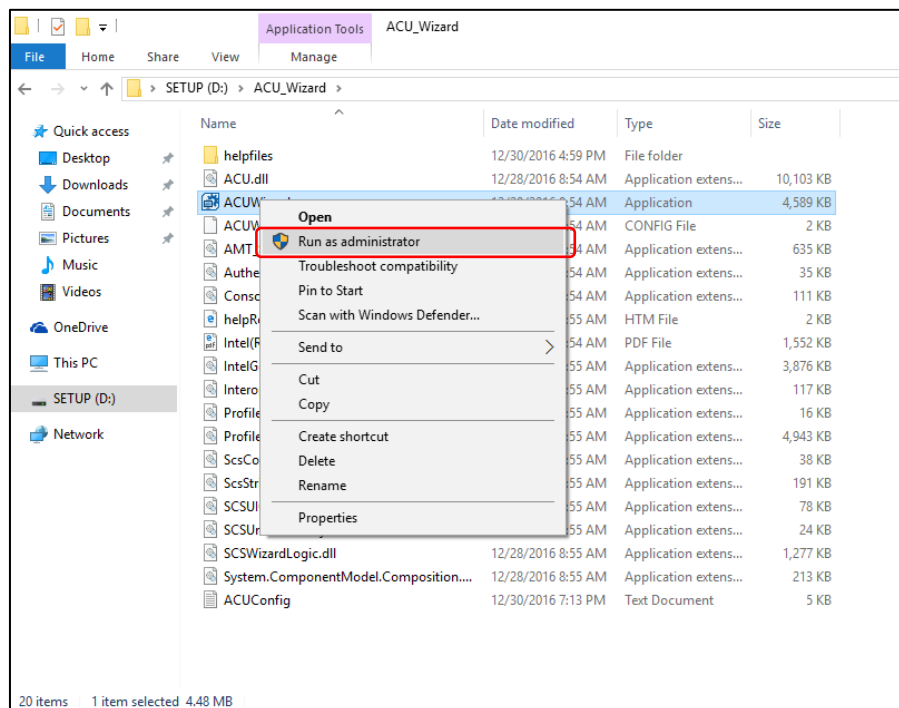


Figure 1. Launching ACUWizard.exe as administrator

6. Click “Configure/Unconfigure this system” (Figure 2).

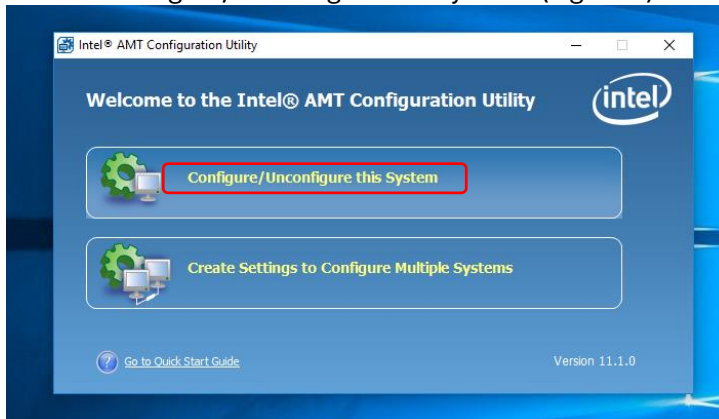


Figure 2. Intel ACU Welcome Screen

7. Verify that the system is configurable by clicking the “System Info...” button (Figure 3).

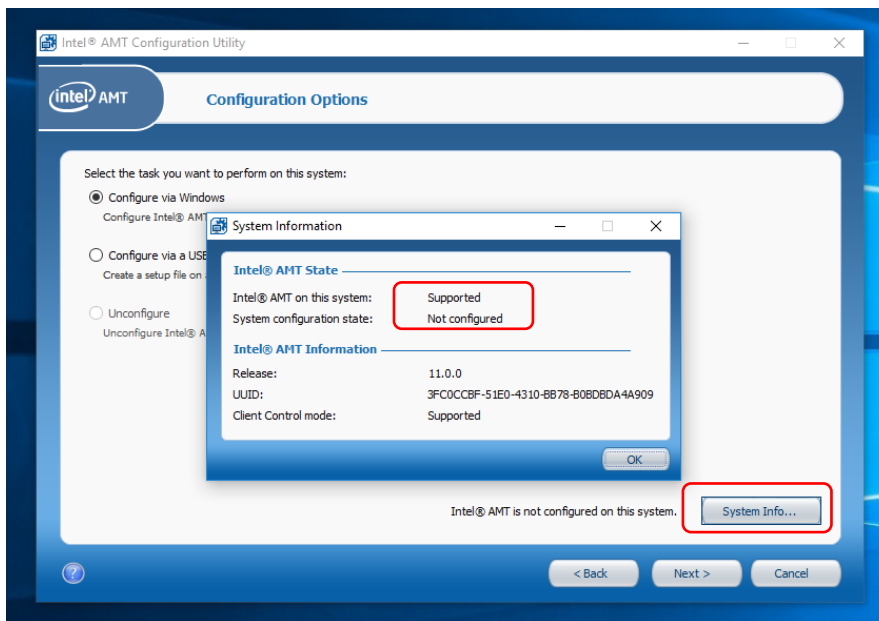


Figure 3. Intel ACU System Information – Verifying Configuration State

8. Select “Configure via Windows”, then “Next” (Figure 4).

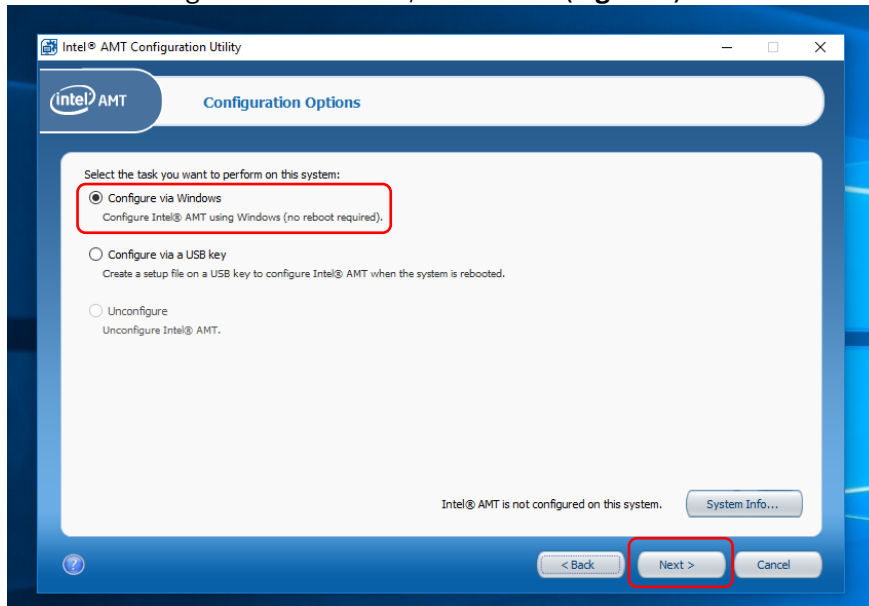


Figure 4. Intel ACU Configuration Options

9. In the “Configure via Windows” window, select the “Edit Configuration...” button (Figure 5).

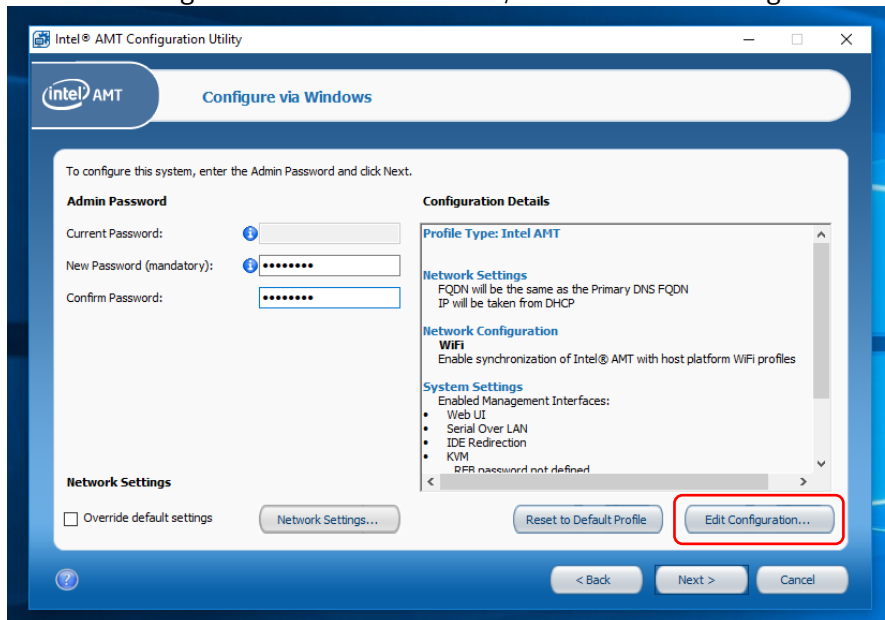


Figure 5. Intel ACU - Configure via Windows

10. Set up your wireless profile using the Configuration Profile Wizard (
11. **Figure 6 - Figure 10**).

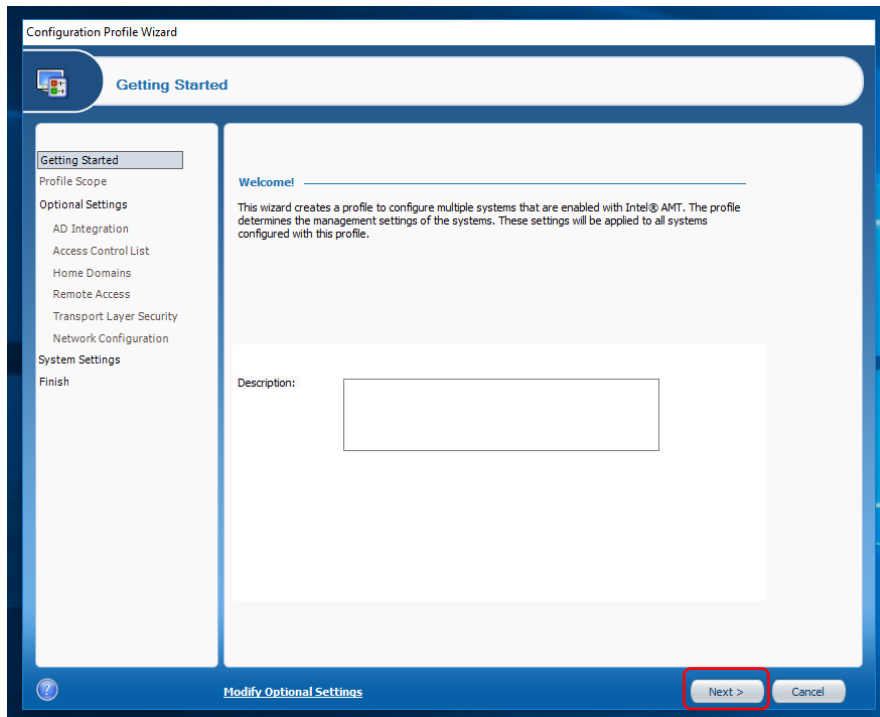


Figure 6. Intel ACU - Configuration Profile Wizard Welcome Screen

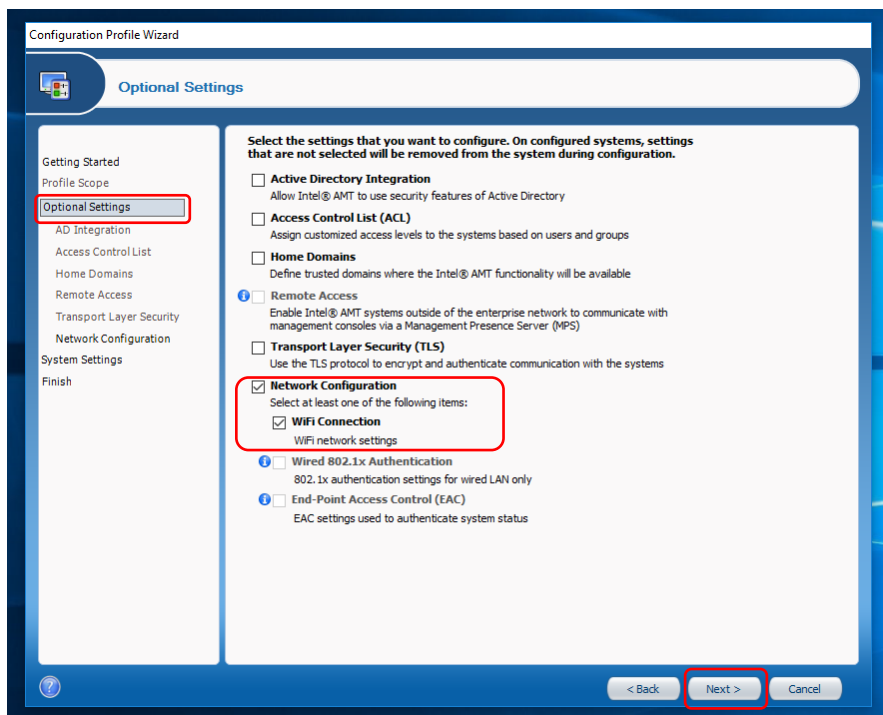


Figure 7. Configuration Profile Wizard: Optional Settings

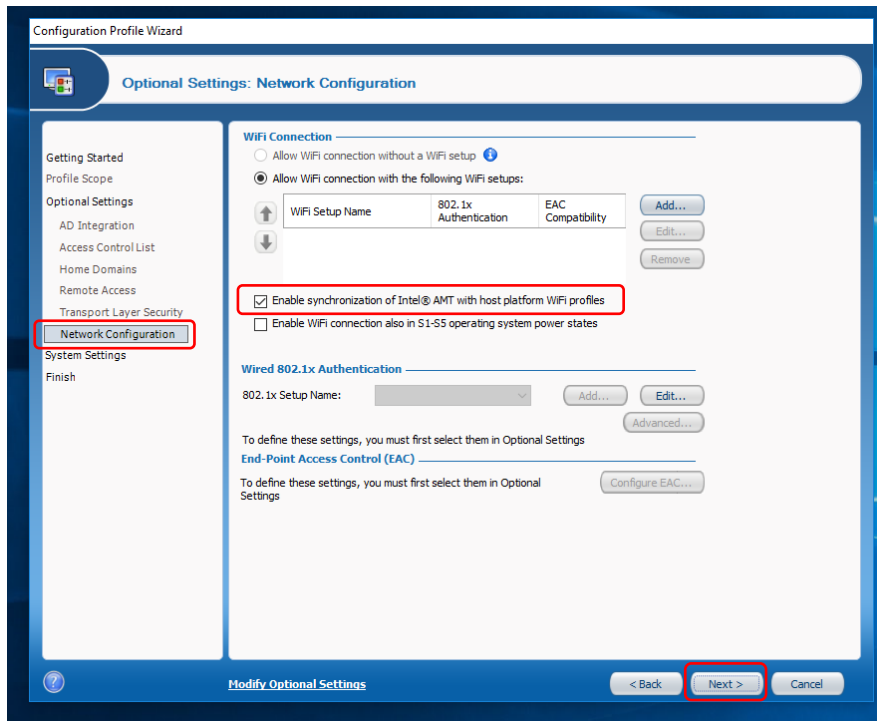


Figure 8. Configuration Profile Wizard: Optional Settings: Network Configuration

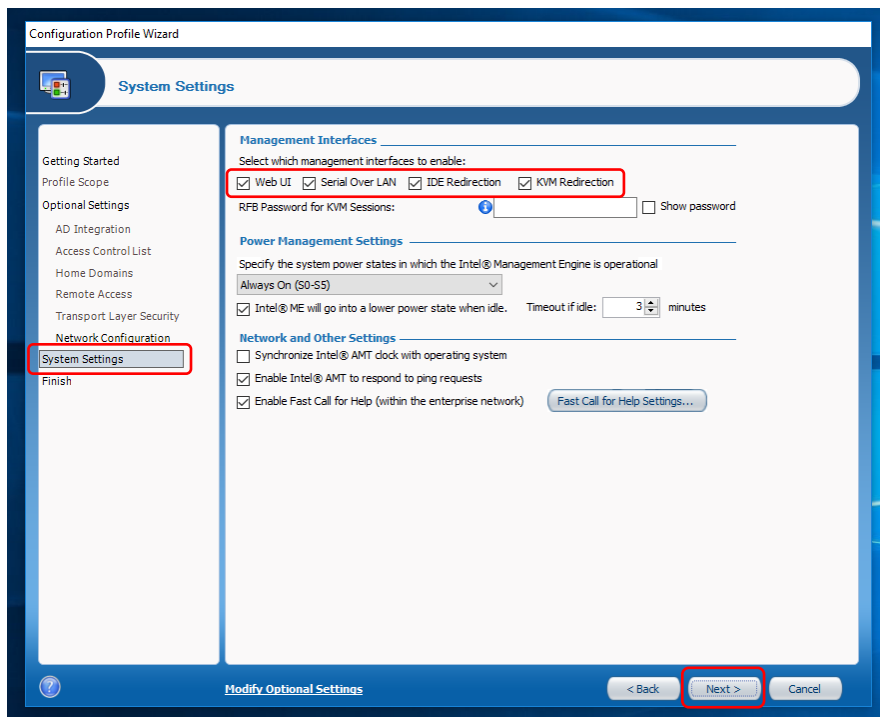


Figure 9. Configuration Profile Wizard: System Settings

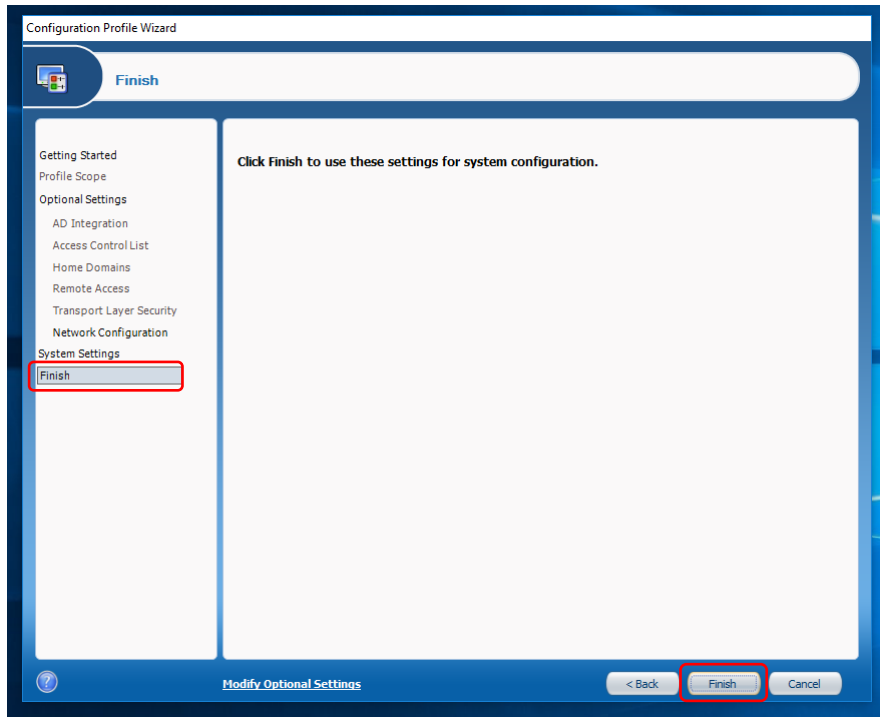


Figure 10. Configuration Profile Wizard: Finish Screen

12. Continue with Profile Encryption by entering your chosen password and pushing your Wireless configuration settings to the Intel Compute Stick (**Figure 11 - Figure 13**).

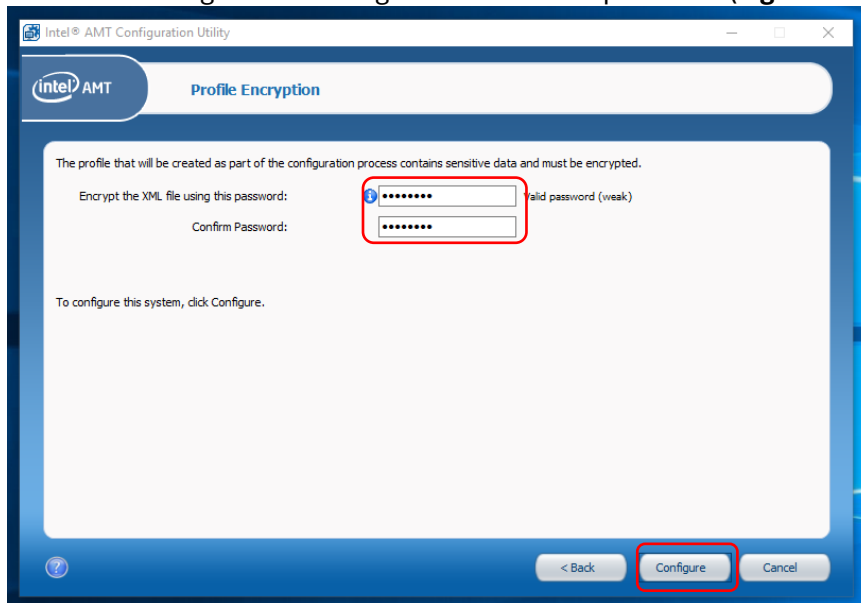


Figure 11. Intel ACU - Profile Encryption

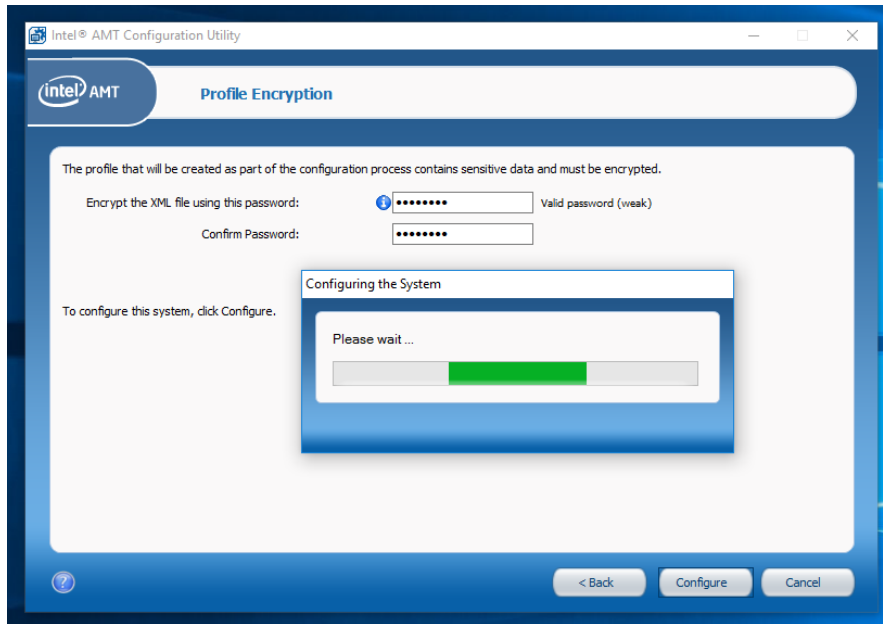


Figure 12. Intel ACU - Profile Encryption: Configuring

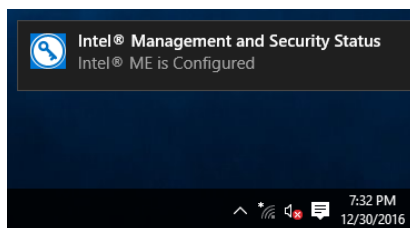


Figure 13. Intel Management and Security Status Pop-up: Configured Notice

13. Finish the Intel ACU Wizard (

14. **Figure 14).**

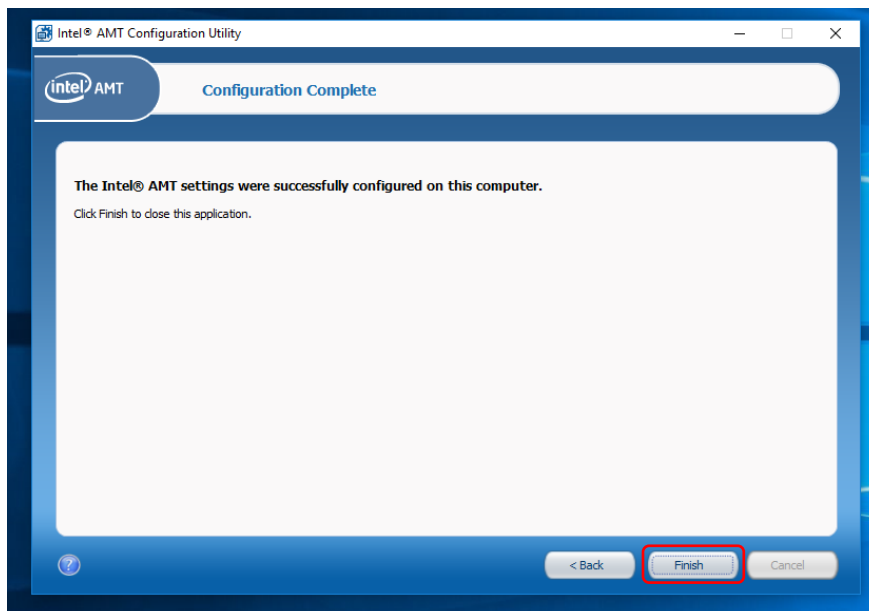


Figure 14. Intel ACU - Configuration Complete

15. Verify your system is configured via the Intel MSS (Figure 15 -
16. Figure 16).

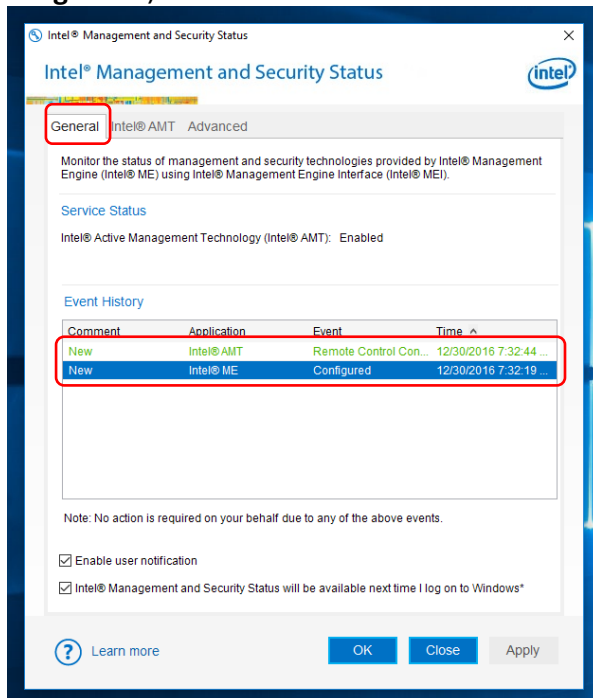


Figure 15. Intel Management and Security Status General Tab

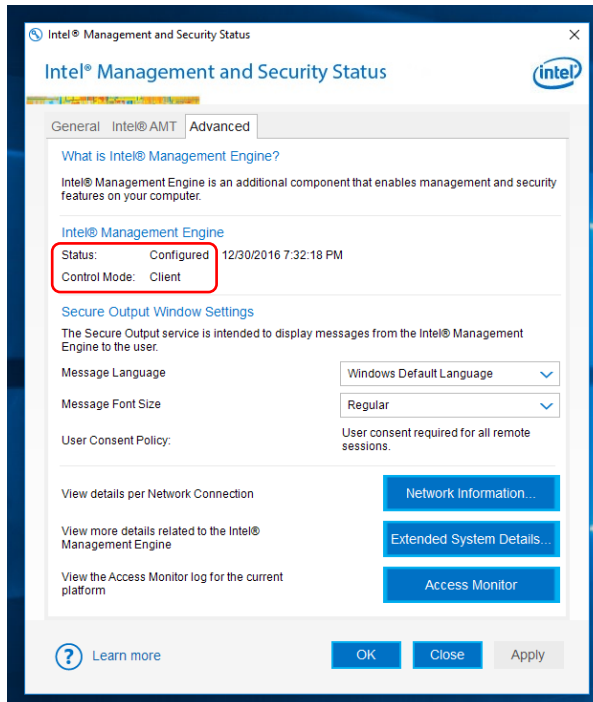
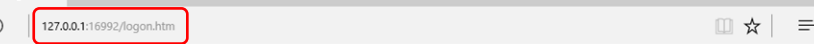
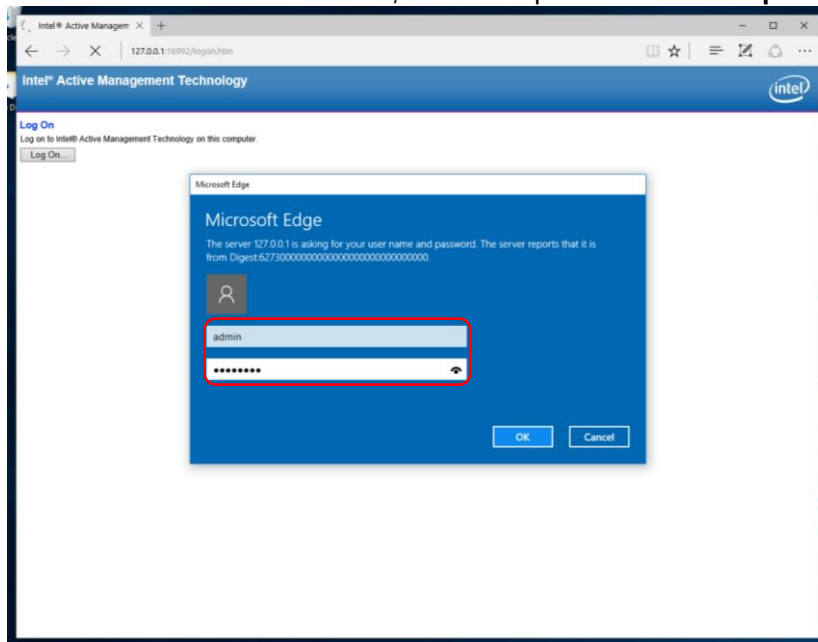


Figure 16. Intel Management and Security Status Advanced Tab

- 
- The screenshot shows a web browser window with the address bar displaying '127.0.0.1:6992/login.htm'. The page title is 'Intel® Active Management Technology'. The main content area features the text 'Log On' and 'Log on to Intel® Active Management Technology on this computer.' Below this text is a button labeled 'Log On...' which is highlighted with a red box.

b. Enter Username: **admin**, Password: password from **Step 12 (Figure 18)**.



c. Verify in System Status that the system has a Wireless IP address (**Figure 19**).

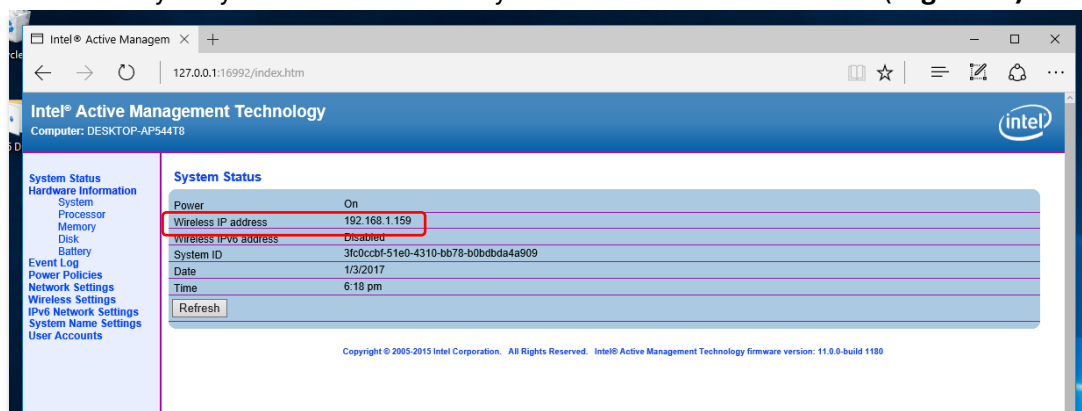
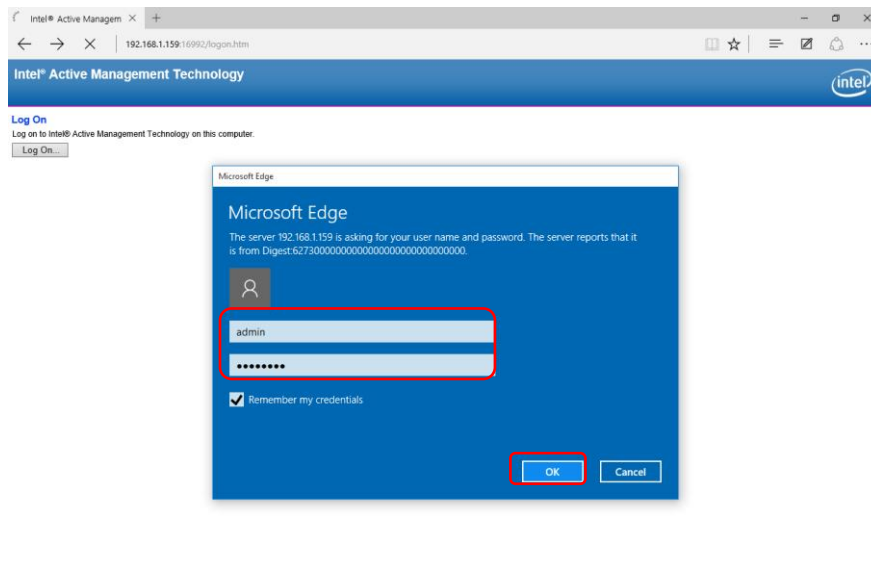


Figure 19. Intel AMT Web UI System Status

18. Verify your system has remote access through the Web UI:
 - a. Open a browser on a separate computer on the same wireless subnet and browse to **`http://ipaddress:16992`** using the IP address from **Step 17.c (Figure 20)**.

Figure 20. Intel AMT Remote Web UI



- d. Verify in System Status that the system is connected (**Figure 22**).

Figure 22. Intel AMT Remote Web UI System Status