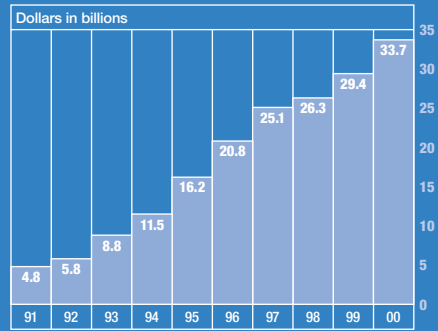


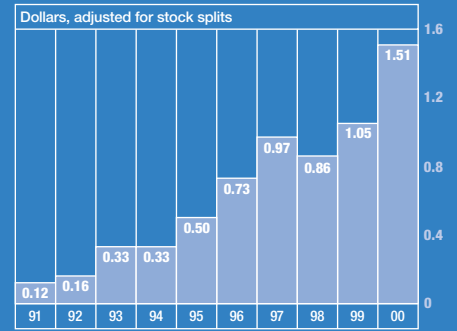
Intel facts and figures

Net revenues

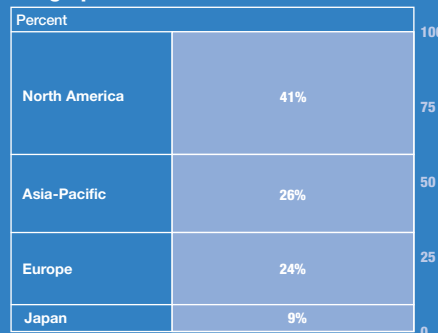


Intel revenues grew 15% in 2000, giving us our 14th consecutive year of revenue growth.

Diluted earnings per share

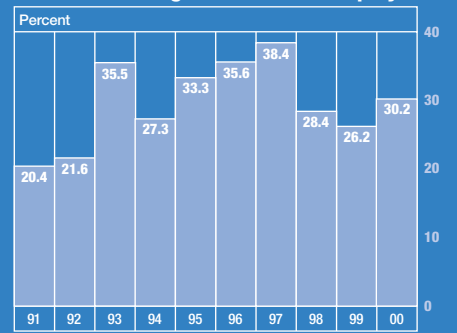


Geographic breakdown of 2000 revenues

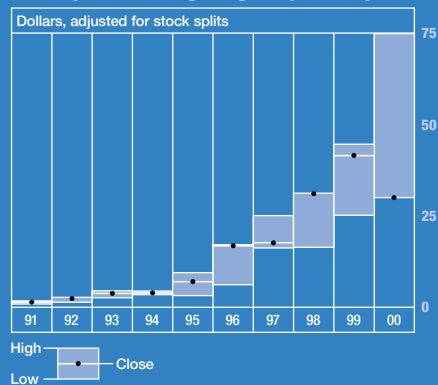


Intel has experienced strong international growth, with 59% of revenues outside North America in 2000.

Return on average stockholders' equity

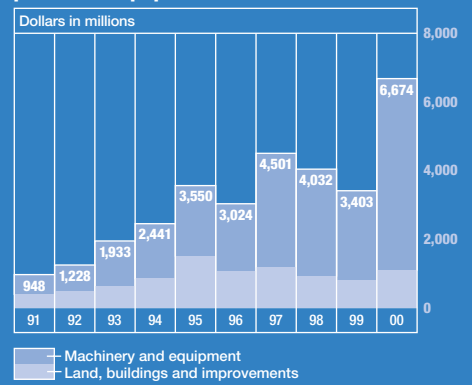


Stock price trading ranges by fiscal year



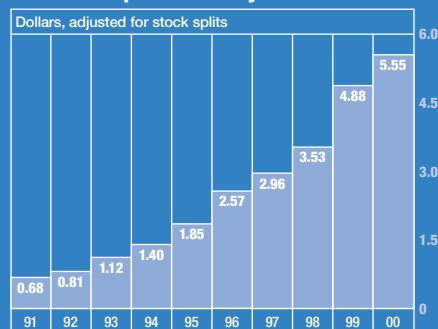
Capital investments reflect Intel's commitment to building leading-edge manufacturing capacity for state-of-the-art silicon products.

Capital additions to property, plant and equipment[†]



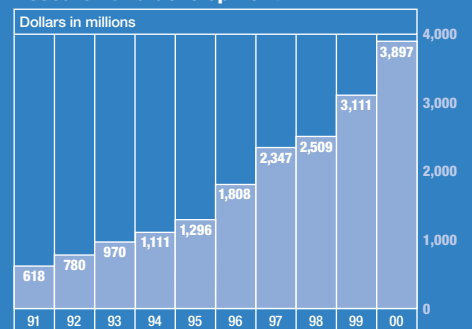
[†]1998 includes assets acquired from Digital Equipment Corp.

Book value per share at year-end



Since its founding, Intel has consistently increased its investment in research and development each year.

Research and development^{**}



^{**}Excluding purchased in-process research and development