

# Intel Wi-Fi for Business

## Insist on Intel for business class Wi-Fi

### World Class Performance for Any Size Business

Speed: Faster than ever before, especially at distance

Range: Office-wide, all the time

Reliability: More users, better connections

Security: Keeps your business protected



### Powerful Features Designed for Today's Workplace

Intel® Wireless Display on monitors and projectors

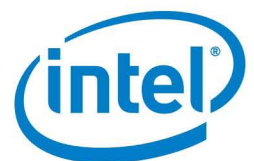
Wireless file transfer with simple drag and drop

Personal hotspot to share paid Internet with your tablet and phone

Improved responsiveness enables nearly instant wake up and connect

Wireless chat when a hotspot is not available

PROSet IT Admin Toolkit for basic, but powerful client management







# Experience Wi-Fi at the speed of business with Intel's multi-stream, dual band, business class adapters



## Go Faster and Farther with Multiple Streams

- Expand your reliable office-wide coverage. Expect consistent delivery and strong signal strength no matter where or how a PC is situated. It's like having more than one ear. With only one, you don't hear well when you're turned the wrong way.
- Much faster than single stream, you save time by delivering more data more quickly. For example, with a maximum data rate of 300 Mbps, a 2x2 adapter will have your downloads, uploads and file transfers done in half the time.
- Get more freedom to roam. Extra antennas (2x2, 3x3) allow data streams to flow through more obstacles like walls, doors and floors to get where they're going.



## Support More Users More Efficiently with the 5GHz Bandwidth

- Reduce congestion and help packets reach their destination. The 5GHz bandwidth offers 5x more capacity than standard 2.4GHz to ensure everyone on your team is well connected. And better connections mean less IT management and reduced expenses.
- Avoid interference to keep your data flowing. 2.4GHz is prone to data clogs because space and channels are limited, plus the frequency is shared with other devices like Bluetooth, microwaves and some cordless phones.
- Grow without adding cost to your business because 5GHz offers at least 20 non-overlapping channels around the world. There are only 3 non-overlapping channels in 2.4GHz, so when you add a 4th person they begin sharing air time.

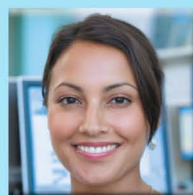


## Save Time and Effort with Smarter, More Responsive Wireless

- Connect faster on the move. Put your laptop to sleep in one location, then engage it at a different, but familiar location and presto. You're connected almost as quickly as you can put your fingers on the keyboard to type.



Jessie is an HR Manager at a company that just expanded and needs to bring on more talent, but he's not worried. With their 5GHz AP and fleet of PCs that have Intel dual band adapters, he knows there will be enough bandwidth for the new team.








Kelly just arrived at a customer's office with no guest Wi-Fi access. She needs to send her colleague an updated copy of her presentation without having email. She fires up her laptop in the lobby and wirelessly transfers the file with a simple drag and drop.

# Intel Wi-Fi for business: special tools for small to medium sized companies

## Manage, repair, secure and optimize with the Intel® PROSet/Wireless IT Admin Toolkit

IT Admin Toolkit	Remotely configure client and profile behaviors via IT Admin profiles and packages, e.g. password protection, Preferred Profile	Users stay productive since they can't break Wi-Fi profile configuration and application behavior; Reduce support calls and expenses
Intel® PROSet/Wireless User Interface	Wi-Fi user profile creation, application and behavior controls; View status, available networks, connect/disconnect to/from Wi-Fi networks	Avoid educating Microsoft Windows XP Intel® PROSet/Wireless users on new interface in Microsoft Windows 7; Reduce support calls and expenses
Adapter Switching	Turns off Wi-Fi radio and prevents users/apps from turning it back on when a valid Ethernet (802.3) connection is established	Conserve IP Addresses; Reduce Wi-Fi network congestion
Debugging Support	Statistics, Manual Diagnostics, Intel® Wireless Troubleshooter	Spend less time resolving Wi-Fi client issues
Profile Migration Tool	Migrates user profiles created in Intel® PROSet/Wireless from Microsoft Windows XP* to Microsoft Windows 7*	Avoid re-creation of user profiles on Microsoft Windows 7 systems
Reset PROSet	User-triggered reset of the Intel® PROSet/Wireless Enterprise software to mitigate occasional minor Wi-Fi issues	Reduce support calls and in-person visits, with their associated expenses, for minor Wi-Fi issues
Security	Up to date authentication and encryption, including WPA2 Enterprise and AES-CCMP	Deploy Wi-Fi without worrying whether you're up to date on security

## Insist on Intel wireless adapters for your wireless workplace

Seven world-class adapters offer the right mix of wireless features for your business.									
		More Responsive	Intel® Wireless Display	Intel® My WiFi Technology	Bluetooth 4.0 Low Energy	Intel® WiMAX 4G	Dual Band 2.4 & 5 GHz	Maximum Speed	Wi-Fi Coverage
Intel® Centrino®	Ultimate-N 6300	✓	✓	✓			✓	450 Mbps Send/Receive	Best [3x3 a/g/n]
	Advanced-N 6250	✓	✓	✓		✓	✓	300 Mbps Send/Receive	Better [2x2 a/g/n]
	Advanced-N 6235	✓	✓	✓	✓		✓	300 Mbps Send/Receive	Better [2x2 a/g/n]
	Advanced-N 6205	✓	✓	✓			✓	300 Mbps Send/Receive	Better [2x2 a/g/n]
	Advanced-N 6150	✓	✓	✓		✓		150/300 Mbps Send/Receive	Good [1x2 b/g/n]
	Wireless-N 2230	✓	✓	✓	✓			300 Mbps Send/Receive	Good [2x2 b/g/n]
	Wireless-N 2200	✓	✓	✓				300 Mbps Send/Receive	Good [2x2 b/g/n]

1 Based on the theoretical maximum bandwidth enabled by 802.11n implementations with multiple spatial streams. Actual wireless throughput and/or range will vary depending on your specific operating system, hardware and software configurations. Check with your PC manufacturer for details. 2 Requires an Intel® Wireless Display enabled PC, compatible adapter, and TV, 1080p and Blu-Ray\* or other protected content playback only available on 2nd generation Intel® Core™ processor-based PCs with built-in visuals enabled. Consult your PC manufacturer. For more information, see [www.intel.com/go/widi](http://www.intel.com/go/widi). 3 Intel® My WiFi Dashboard is an optional feature and requires additional software and an Intel® Centrino® wireless adapter. Wi-Fi devices must be certified by the WiFi Alliance for 802.11 and Wi-Fi Direct\* in order to connect. See [www.intel.com/network/connectivity/products/wireless/mywifi.htm](http://www.intel.com/network/connectivity/products/wireless/mywifi.htm) for more details. 4 Intel® PROSet/Wireless Software may not be supported by your PC manufacturer. Check with your PC manufacturer for details on availability. 5 Some security solutions may not be supported by your PC's operating system and/or by your PC manufacturer. Check with your PC manufacturer for details on availability.

Software and workloads used in performance tests may have been optimized for performance only on Intel microprocessors. Performance tests, such as SYSmark and MobileMark, are measured using specific computer systems, components, software, operations and functions. Any change to any of those factors may cause the results to vary. You should consult other information and performance tests to assist you in fully evaluating your contemplated purchases, including the performance of that product when combined with other products. No license, express or implied, by estoppel or otherwise, to any intellectual property rights is granted by this document. Except as provided in Intel's Terms and Conditions of Sale for such products, Intel assumes no liability whatsoever, and Intel disclaims any express or implied warranty, relating to sale and/or use of Intel products including without limitation liability or warranties relating to fitness for a particular purpose, merchantability, or infringement of any patent, copyright or other intellectual property right. Intel products are not intended for use in medical, life saving, or life sustaining applications. Intel may make changes to specifications and product descriptions at any time, without notice. For the most current product information, please visit: <http://www.intel.com/go/wireless>. Copyright © 2012 Intel Corporation. All rights reserved. Intel, the Intel logo, Intel, and Intel Centrino are trademarks or registered trademarks of Intel Corporation or its subsidiaries in the United States and other countries. \*Other names and brands may be claimed as the property of others.