



# CHANNEL ALL-IN-ONE PC PRODUCTS CATALOG 2H 2016



# TABLE OF CONTENTS

Channel All-in-One PCs .....	3
Loop* LP-3400 Gaming Custom All-in-One PC Chassis ....	4
Windows® 10 runs best on 6th Gen Intel® Core™ Processors .....	5
Standards-Based All-in-One PCs .....	6
Thin Mini-ITX Platform for All-in-One PCs .....	8
Standards-Based All-in-One PCs .....	9
Portable All-in-One PCs .....	17
Custom All-in-One PCs .....	21
Thin Mini-ITX Desktop Boards .....	29
Thin Mini-ITX Desktop Boards based on Intel® 100-Series Chipsets .....	30
Intel® 8 Series Thin Mini-ITX Boards .....	31
Intel® 7 Series Thin Mini-ITX Boards .....	33
Thin Mini-ITX and All-In-One PCs with MXM* .....	34
Compatible Components .....	35
Power Adapter Designs for All-in-One PCs and Small Form Factor Chassis .....	36
Legal Information .....	37



# CHANNEL ALL-IN-ONE PCS



## STANDARDS-BASED

Thin Mini-ITX promotes integration for desktop boards and All-in-One PC Chassis.



Support up to 65W TDP Processor



Thin Mini-ITX Customization



## PORTABLE

Portable All-in-One PCs combine performance with built-in battery for switched-on mobility.



Intel-Level Performance



Portable with built-in battery



## CUSTOM

Custom All-in-One PCs provide an out-of-the-box solution, designed to meet specific requirements.



Highly Compact Design



Switch on out-of-the-box

## LOOP\* LP-3400 GAMING CUSTOM ALL-IN-ONE PC CHASSIS

### LOOP\* LP-3400 ALL-IN-ONE PC

Incredible capability in a stunning chassis. The power available from a liquid cooled, 6th Generation Intel® Core™ i7-6700K Processor combined with a single high-end gaming graphics card, channelled through a vivid, 34" curved screen with 3440 x 1440 resolution, enables an exceptional, immersive gaming experience.



# WINDOWS® 10 RUNS BEST ON 6TH GEN INTEL® CORE™ PROCESSORS

## EXPERIENCE THE BEST OF WINDOWS® 10 WITH 6TH GEN INTEL® CORE™ PROCESSORS



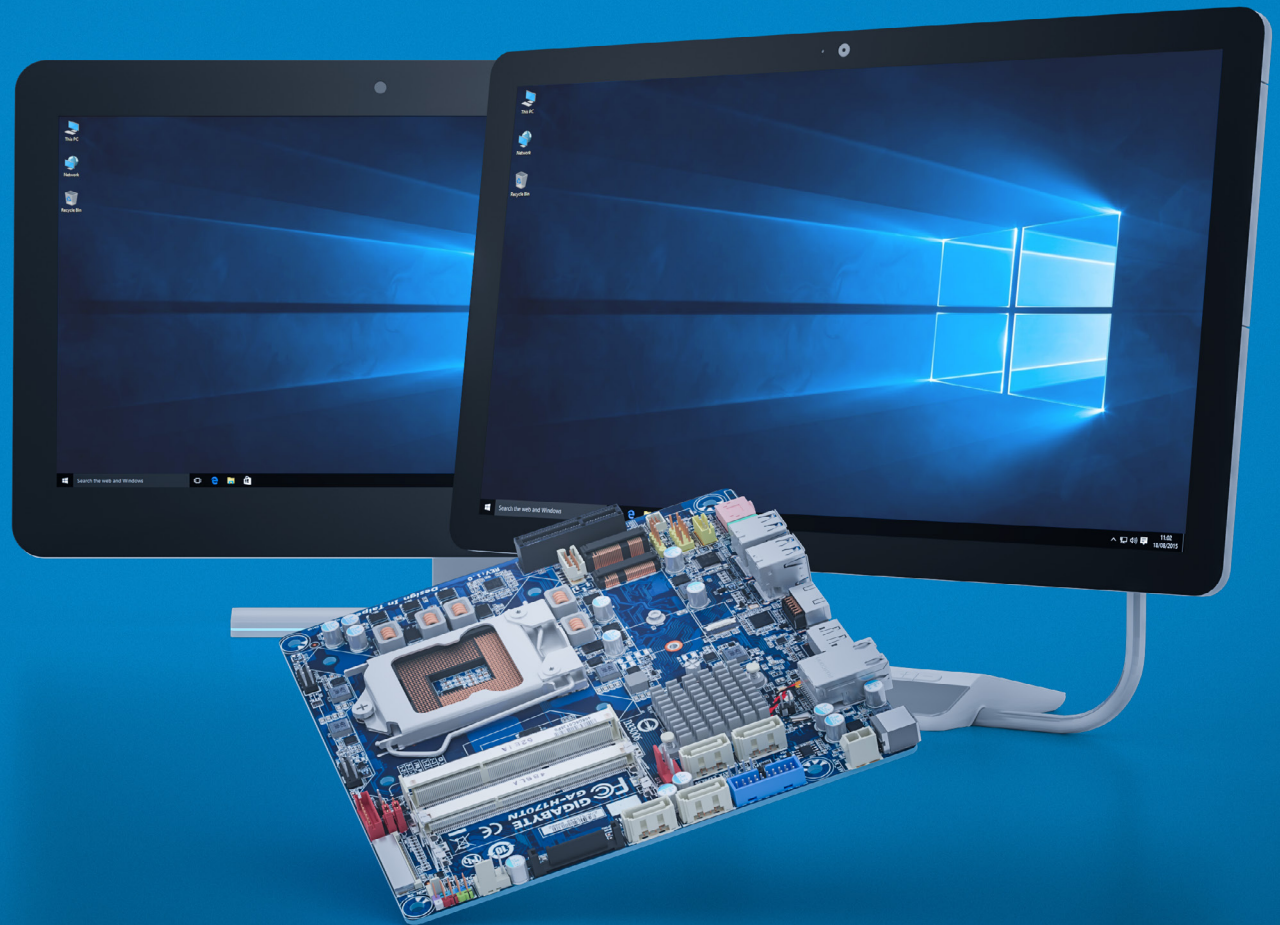
With blazing fast startups, web browsing and app switching your productivity climbs higher with the performance of the 6th Gen Intel® Core™ processor and Windows® 10



Immerse yourself in a 4K Ultra HD video experience made possible by 6th Gen Intel® Core™ processor and Windows® 10



Heroic experiences await thanks to the stunning graphics and astounding performance of 6th Gen Intel® Core™ processor-based devices running Windows® 10 with DirectX 12



# STANDARDS-BASED ALL-IN-ONE PCS



## STANDARDS-BASED ALL-IN-ONE PCS

# THIN MINI-ITX PROMOTES INTER-OPERABILITY AND CUSTOMIZATION

Choose from a wide range of All-in-One PC Chassis and interoperable Thin Mini-ITX Desktop Boards to craft dynamic solutions that enable business and home computing environments.



Support for up to **6th Generation Intel® Core™** Processors



**10 Point Capacitive Multi-Touch** on Select Systems



**4K Ultra High Definition Display** on Select Systems



## THIN MINI-ITX PLATFORM FOR ALL-IN-ONE PCS

**THIN MINI-ITX DESKTOP  
BOARDS CAN SUPPORT UP TO  
6TH GENERATION INTEL® CORE™  
PROCESSORS, UP TO 65W TDP.**

Combine Thin Mini-ITX Desktop Boards with interoperable All-in-One PC Chassis and standard desktop compute components to create capable solutions that meet specific customer needs.



# STANDARDS-BASED ALL-IN-ONE PCS

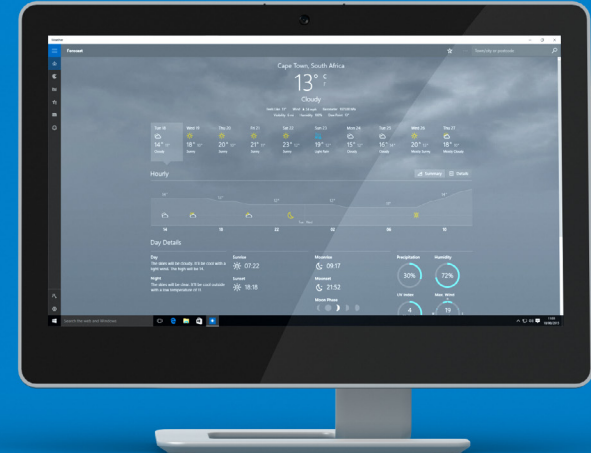
## MITAC\* M1000

- 23.6" Full HD
- 10 Point Multi-Touch
- 1.3MP Webcam
- 2.5" HDD/SSD Support
- VESA Support



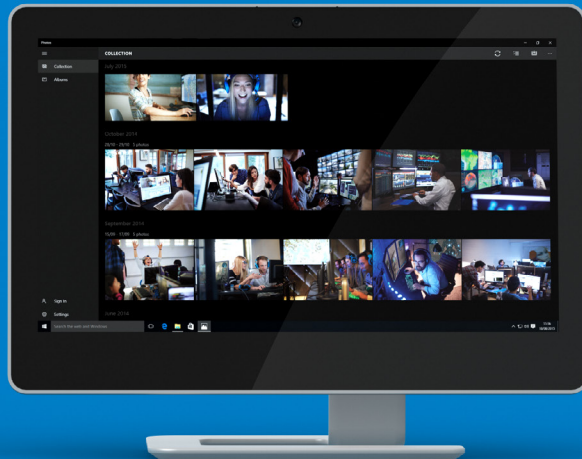
## MITAC\* M980 WITH 4K

- 23.6" Full HD or Ultra HD (4K)
- 10-Point Multi-Touch
- 1.3 MP Webcam + Dual Mic
- 2.5" HDD/SSD Support
- Voice Assistant



## MITAC\* M870/880

- 21.5" (870); 23.6" (880) Full HD
- 10-Point Multi-Touch
- 1.3 MP Webcam
- 2.5" HDD/SSD Support
- Voice Assistant



## MITAC\* M810

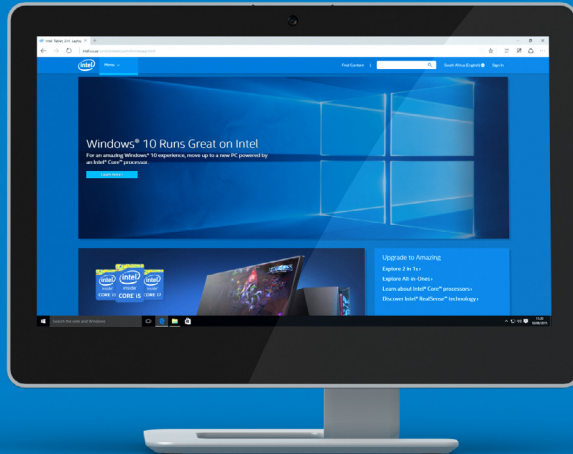
- 21.5" Full HD
- 10-Point Multi-Touch
- 720p Webcam
- 3.5"/2.5" HDD/SSD Support
- Optional MXM Graphics



# STANDARDS-BASED ALL-IN-ONE PCS

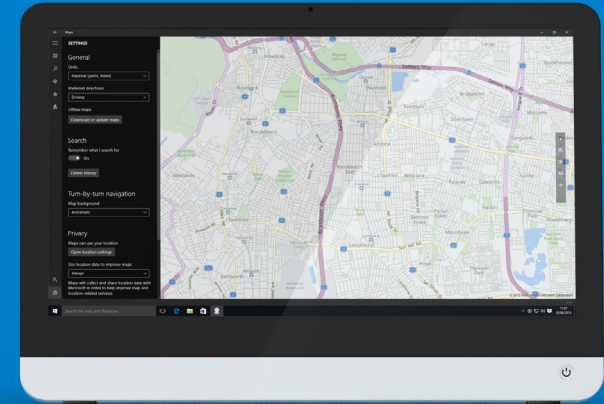
## MITAC\* M770/780

- 21.5" (870); 23.6" (880) Full HD
- 10-Point Multi-Touch
- 1.3 MP Webcam
- 2.5" HDD/SSD Support
- VESA Support



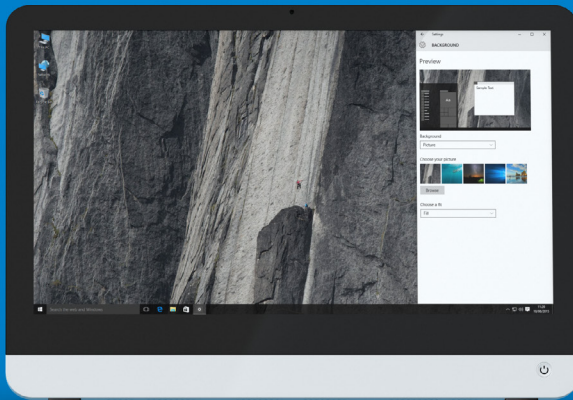
## THINKVIEW\* T-A2201

- 21.5" Full HD
- Optional Touch
- 720p Webcam
- 2.5" HDD/SSD Support
- VESA Support



## THINKVIEW\* T-A2202

- 21.5" Full HD
- Optional Touch
- 1.3 / 2.0MP Option
- 2.5" HDD/SSD Support
- VESA Support



## THINKVIEW\* T-A1905

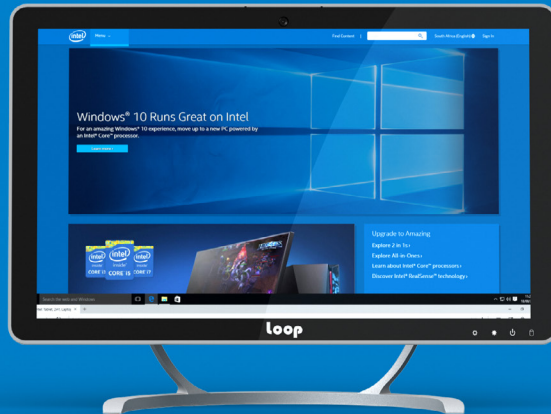
- 18.5"; 1366 x 768px
- Optional Touch
- 720p Webcam
- 2.5" HDD/SSD Support
- VESA Support



# STANDARDS-BASED ALL-IN-ONE PCS

## LOOP\* LP-2152

- 21.5" Full HD
- 10-Point Multi-Touch
- 720p Webcam
- 2.5" HDD/SSD Support
- 4-in-1 Card Reader



## LOOP\* LP-1951

- 19.5"; 1600 x 900px
- 1.3 MP Webcam + Dual Mic
- 2.5" HDD/SSD Support
- 4-in-1 Card Reader
- Tilt Adjust



## LOOP\* LP-2360

- 23.6" Full HD
- 10-Point Multi-Touch
- 720p Webcam
- 2.5" HDD/SSD Support
- 4-in-1 Card Reader



## LOOP\* LP-1950

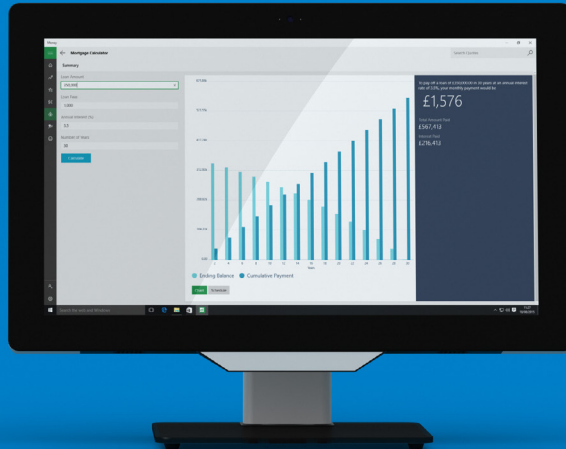
- 19.5"; 1600 x 900px
- 1.3 MP Webcam + Dual Mic
- 2.5" HDD/SSD Support
- 4-in-1 Card Reader
- Tilt Adjust



# STANDARDS-BASED ALL-IN-ONE PCS

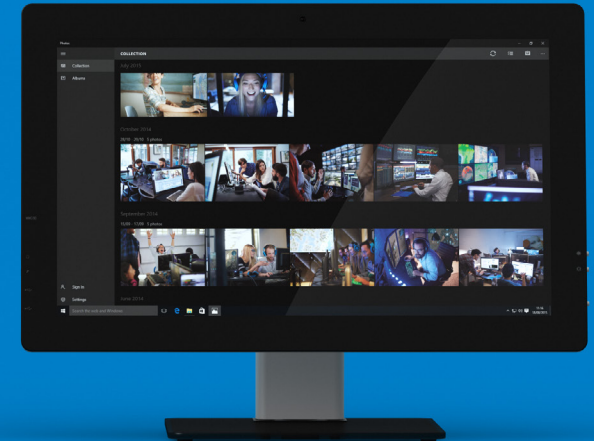
## LOOP\* LP-2151T

- 21.5" Full HD
- 10-Point Multi-Touch
- 1.3 MP Webcam
- 2.5" HDD/SSD Support
- VESA Support



## LOOP\* LP-2150T

- 21.5" Full HD
- 10-Point Multi-Touch
- 1.3 MP Webcam
- 2.5" HDD/SSD Support
- VESA Support



## WIBTEK\* X20/X22

- 21.5" 1920 x 1080;  
19.5" 1600 x 900
- Multi-Touch Optional
- 2.0 MP Webcam
- 2.5" HDD/SSD Support
- Built-in Battery Optional



## WIBTEK\* A24 L

- 24"/23.6" Full HD;  
4K Option
- Optional Touch
- 2.0 MP Webcam + Mic
- 3.5"/2.5" HDD/SSD Support



# STANDARDS-BASED ALL-IN-ONE PCS

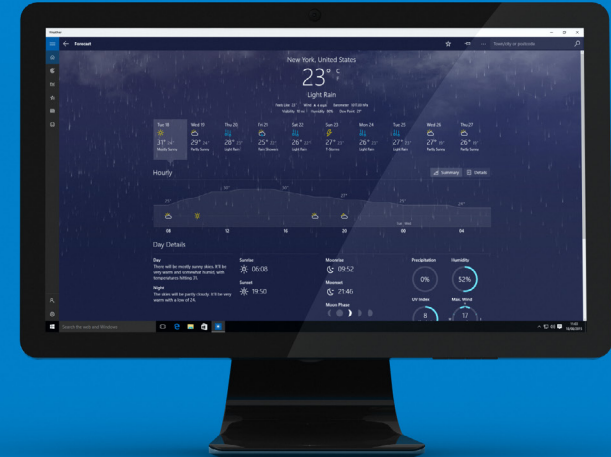
## WIBTEK\* A24 S

- 24"/23.6" Full HD;  
4K Option
- Optional Touch
- 2.0 MP Webcam + Mic
- 3.5"/2.5"  
HDD/SSD Support
- Wireless Charging Base



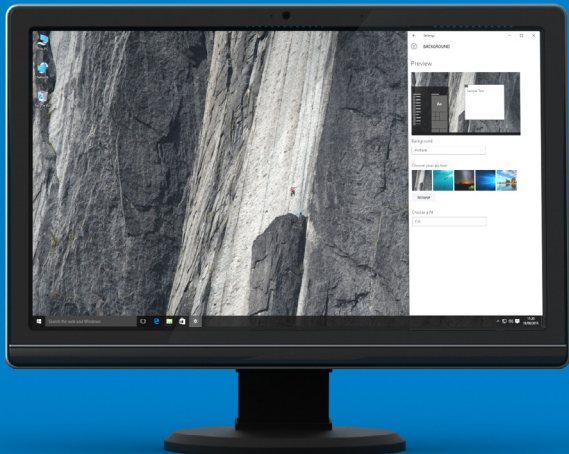
## WIBTEK\* A20/22/23

- 23" Full HD
- 10-Point Multi-Touch
- 2.0 MP Webcam + Mic
- 3.5"/2.5" HDD/SSD Support
- VESA Support



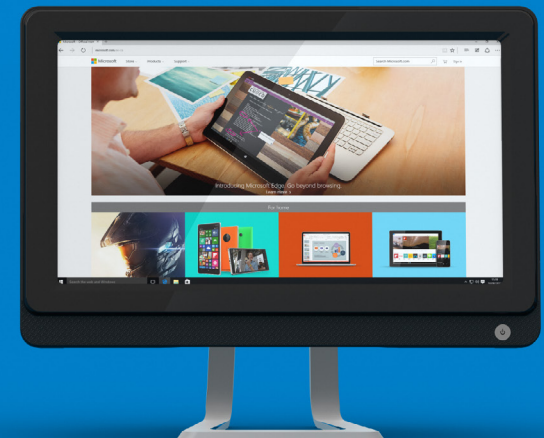
## WIBTEK\* A21

- 21.5" Full HD
- 2.0 MP Webcam + Mic
- 2.5" HDD/SSD Support
- Height, Swivel & Tilt Adjust
- VESA Support



## WIBTEK\* AMV SERIES

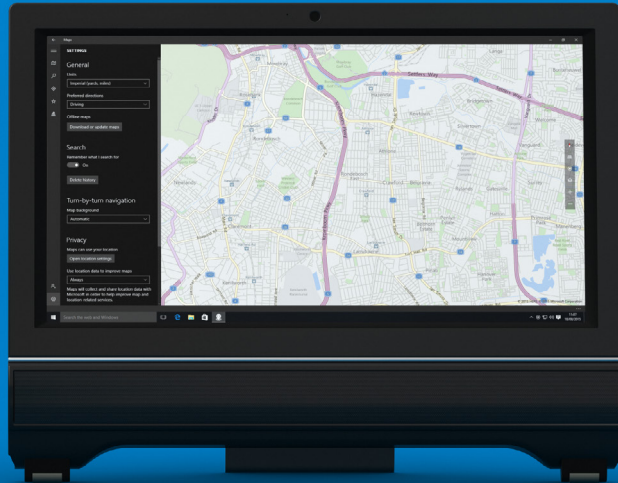
- 18.5"/19.5"/21.5"/23"  
1366x768; 1600x900; 1920x1080
- 10-Point Multi-Touch
- 1.3 MP Webcam
- 2.5" HDD/SSD Support
- VESA Support



# STANDARDS-BASED ALL-IN-ONE PCS

## ECS\* G11

- 21.5" Full HD
- Resistive Touch
- 1.3 MP Webcam + DMIC
- 3.5"/2.5" HDD/SSD Support
- VESA Support



## KME\* A2E7X

- 21.5" Full HD
- 10-Point Multi-Touch
- 2.0 MP Webcam + Mic
- 3.5"/2.5" HDD/SSD Support
- VESA Support



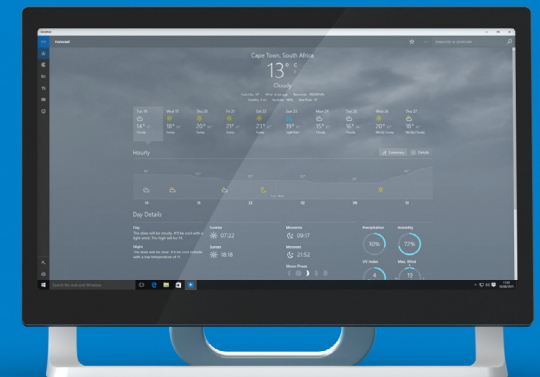
## KME\* HP-A206/A906

- 21.5" Full HD
- 1.3 MP Webcam + Dual Mic
- 3.5"/2.5" HDD/SSD Support
- VESA Support
- Kensington Slot



## KME\* HP-209

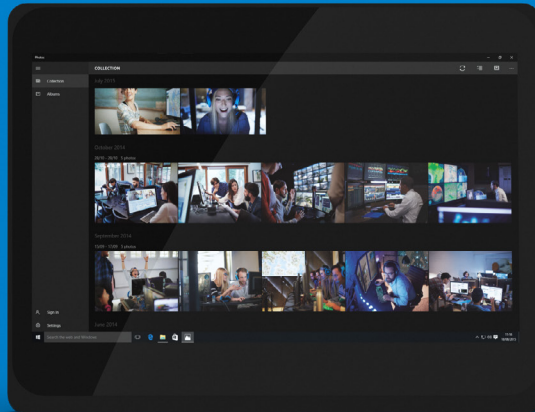
- 21.5" Full HD
- Optional Touch
- 2.0 MP Webcam + Mic
- 3.5"/2.5" HDD/SSD Support
- Optional MXM Graphics



# STANDARDS-BASED ALL-IN-ONE PCS

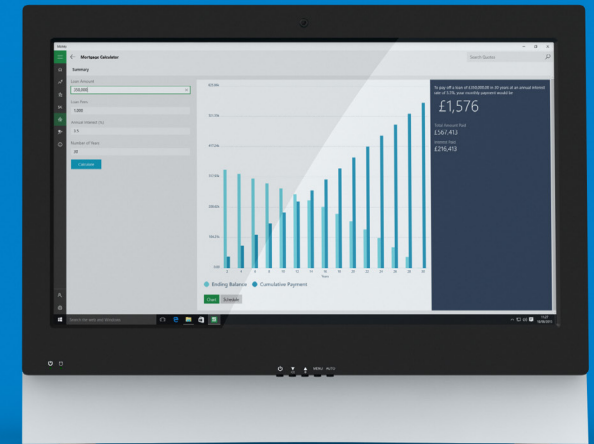
## TOP TECH\* UT215

- 21.5" Full HD
- Optional Multi-Touch
- 2.0 MP Webcam + Mic
- 2.5" HDD/SSD Support
- Kensington Slot



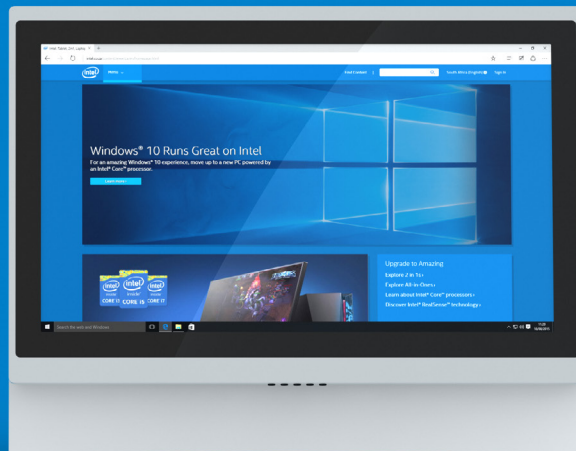
## JUMPER\* ET30

- 21.5" Full HD
- 0.3-2.0 MP Webcam + Mic
- 3.5"/2.5" HDD/SSD Support
- Thin Mini-ITX + Mini-ITX
- 12.7mm ODD Option



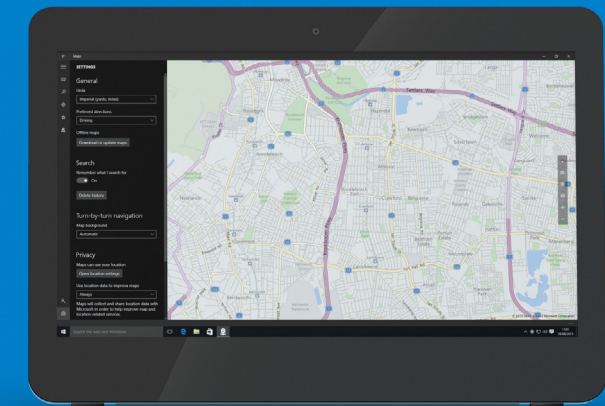
## JUMPER\* ET35

- 21.5" Full HD
- Optional Touch
- 1.3 / 2.0MP Option
- 3.5"/2.5" HDD/SSD Support
- Micro-ATX Support



## JUMPER\* ET50

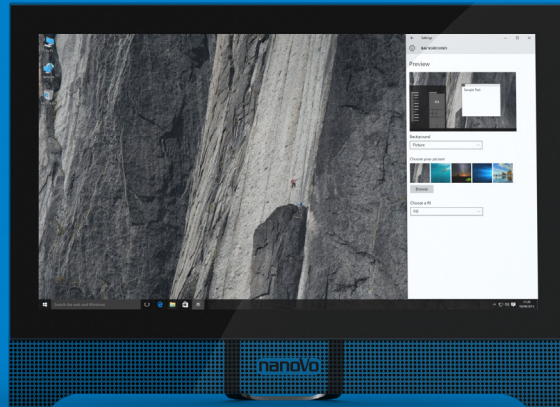
- 23.6" Full HD
- 1.3 / 2.0MP Option
- 3.5"/2.5" HDD/SSD Support
- 12.7mm ODD Option
- Micro-ATX Support



# STANDARDS-BASED ALL-IN-ONE PCS

## NANOVO\* ELITAL

- 21.5"/24"/27"/39"  
1600x900; 1920x1080
- 10-Point Multi-Touch
- 2.0 MP Webcam + DMIC
- 2.5" HDD/SSD Support
- VESA Support



## HIBERTEK\* THIN 20/22/23

- 19.5"/21.5"/23" FHD  
1920 x 1080
- Optional Touch
- 1.3 / 2.0MP Option
- 2 x 2.5"  
HDD/SSD Support
- Micro-ATX Support



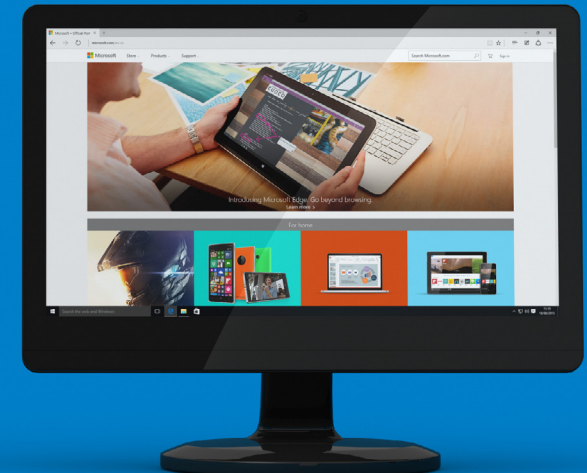
## DQ\* E241GII

- 18.5"/21.5"/23.6" 1440x768;  
1600x900; 1920x1080
- 10-Point Multi-Touch (Optional)
- 1.3 MP Webcam + Mic
- 3.5"/2.5" HDD/SSD Support
- VESA Support for 23.6" Model



## GIGABYTE\* AF21

- 21.5" Full HD
- 1.3 MP Webcam
- 1 x 3.5" HDD Bay
- 2 x 2.5" HDD/SSD Bays<sup>1</sup>
- VESA Support



<sup>1</sup> Model Dependant



# PORTABLE ALL-IN-ONE PCS

## PORTABLE ALL-IN-ONE PCS

# ENJOY POWERFUL COMPUTING COMBINED WITH BATTERY POWERED PORTABILITY

Enjoy the stunning lay-flat design that turns any surface into your personal playground, while the built-in battery lets you go from room to room.



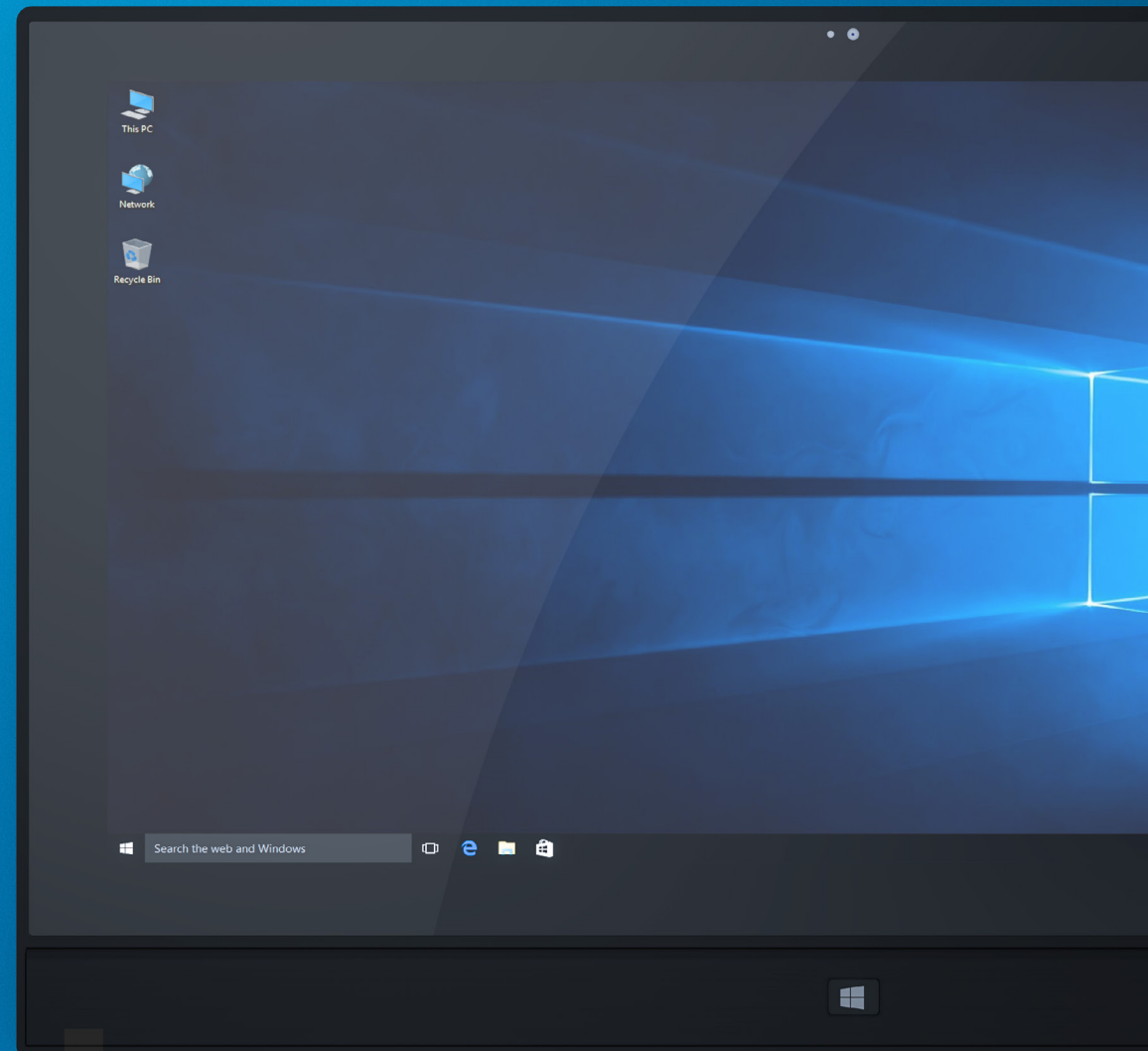
**Stylish:** Elegant lay-flat design



**Family fun:** Multi-user, multi-touch apps



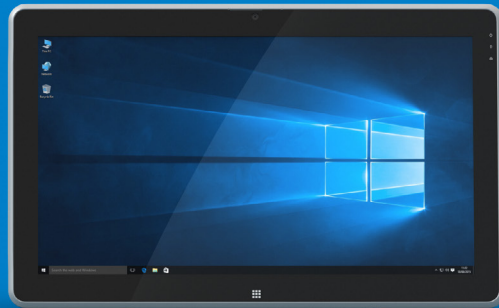
**Portable:** Built-in battery



# PORTABLE ALL-IN-ONE PCS

## MITAC\* M200

- 19.5" 1600 x 900
- 10-Point Multi-Touch
- HD Camera
- 2.5" HDD/SSD Support
- 2-8GB 1333MHz DDR3L



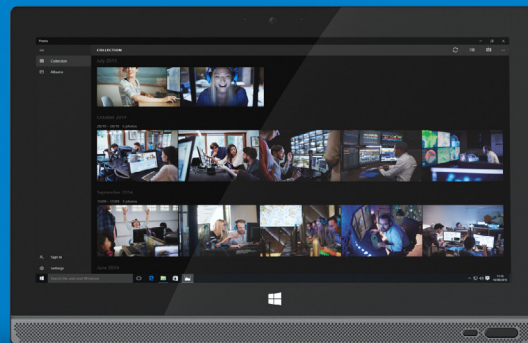
## JUMPER\* ET15

- 19.5" 1600 x 900
- 10-Point Multi-Touch
- 0.3-2.0MP Webcam Option
- 2.5" HDD/SSD Support
- 2-16GB 1333MHz DDR3L



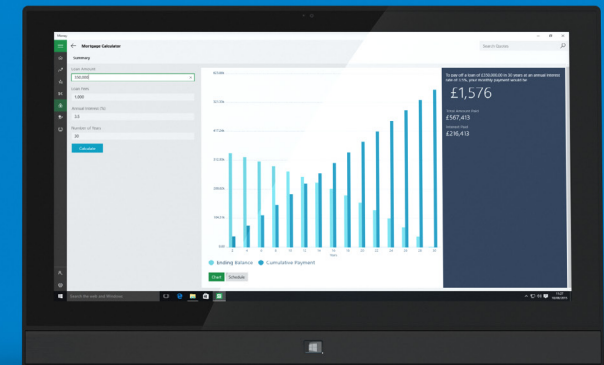
## LENGDA\* UM30B

- 19.5" 1600 x 900
- 720P Webcam
- 2.5" HDD/SSD Support
- 9.5mm Tray Type Option
- 1-8GB 1333MHz DDR3L



## LENGDA\* U1S

- 23.6" Full HD
- 10-Point Multi-Touch
- HD Camera
- 2.5" HDD/SSD Support
- 1-8GB 1333MHz DDR3L



# PORTABLE ALL-IN-ONE PCS

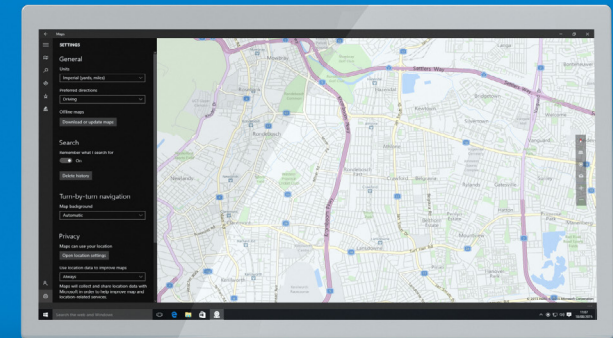
## KME\* HT-20 SERIES

- 19.5" 1600 x 900
- 10-Point Multi-Touch
- 720P
- 2.5" HDD/SSD Support



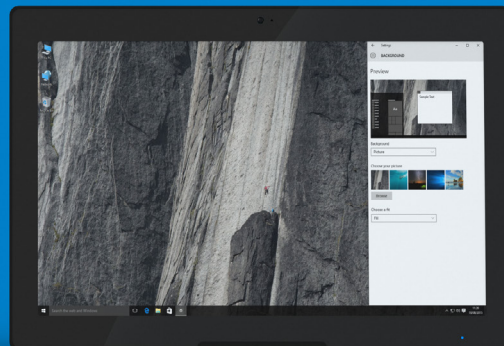
## 3NOD\* BAYTRAIL D

- 21.5" Full HD
- Capacitive Multi-Touch
- 0.3/13.MP HD (Optional)
- 2.5" HDD/SSD Support
- 3-in-1 Card Reader



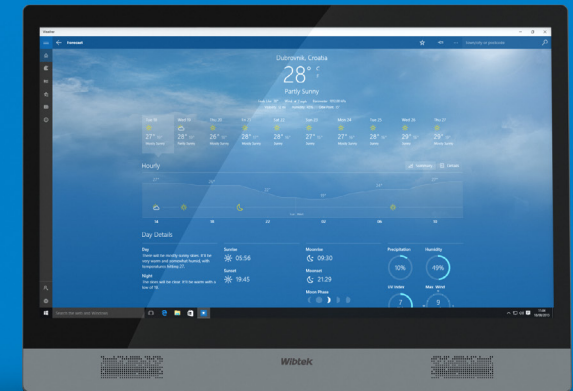
## HIBERTEK\* P20

- 19.5" 1600 x 900
- 10-Point Multi-Touch
- 2MP Webcam
- 2.5" HDD/SSD Support
- 2-16GB 1333 MHz DDR3L



## WIBTEK\* X20S/X22S

- 21.5" 1920 x 1080;  
19.5" 1600 x 900
- Multi-Touch Optional
- 2.0 MP Webcam
- 2.5" HDD/SSD Support
- Built-in Battery



# CUSTOM ALL-IN-ONE PCS



## CUSTOM ALL-IN-ONE PCS

# CUSTOM ALL-IN-ONE PCS WITH INTEL INSIDE® ENABLE STYLISH, RESPONSIVE COMPUTING

6th Generation Intel® Core™ Processors in an All-in-One PC deliver premium performance and brilliant lifelike visuals while built-in security<sup>1</sup> helps keep you worry free.



**Compact and Stylish**



**Specialized Designs** for Specific Solutions



**Optional Discrete Graphics** on Select Systems



# CUSTOM ALL-IN-ONE PCS

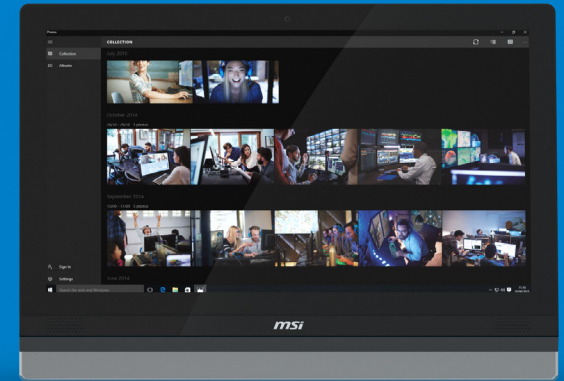
## MSI\* GAMING GE

- 22", 24", 27"; FHD (1920 x 1080) or 4K (3840 x 2160)
- 10-Point Multi-Touch
- 2.0 MP Webcam
- Up to 3 x 2.5", 3.5" or mSATA
- Up to NVIDIA® GeForce® GTX 960M 2GB GDDR5



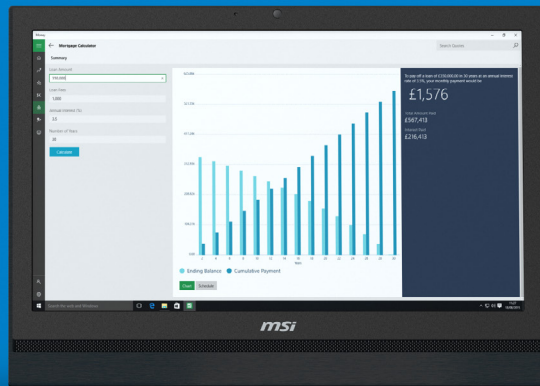
## MSI\* ADORA 20/22/24

- Adora 20: 19.5" 1600 x 900
- Adora 22: 22" 1600 x 900
- Adora 24: 23.6" Full HD
- 10-Point Multi-Touch (Optional)
- 1.0 MP Webcam + Mic
- 2.5" HDD/SSD Support
- 3-in-1 Card Reader



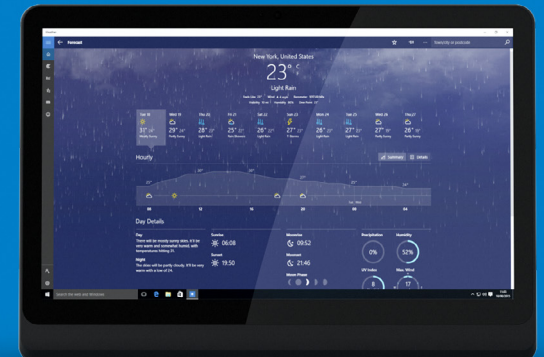
## MSI\* AP200

- 20" 1600 x 900
- Multi-Touch (Windows® 7 Only)
- 1.0 MP Webcam + Mic
- 3.5"/2.5" HDD/SSD Support
- Multi-Pivot Stand



## MSI\* AP16

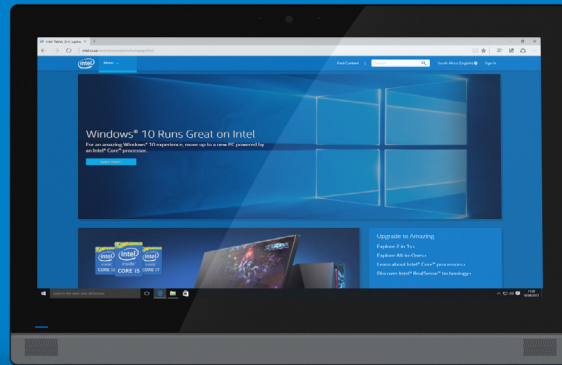
- 15.6" 1600 x 900
- 10-Point Multi-Touch
- 1.0 MP Webcam + Mic
- 2.5" HDD/SSD Support
- Tilt Adjust
- Voice Control (Optional)



# CUSTOM ALL-IN-ONE PCS

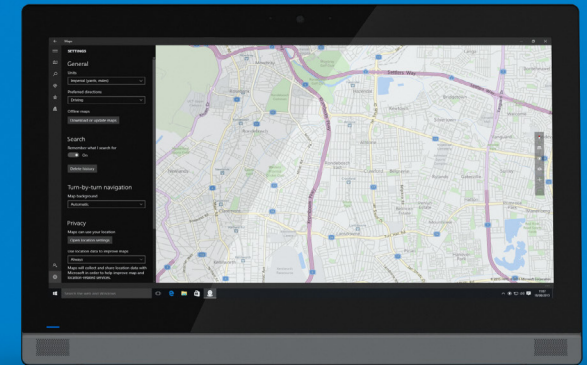
## ECS\* V20S-H81/-BAT

- 19.5" 1600 x 900
- 10-Point Multi-Touch
- 1MP Webcam + DMIC
- 2.5" HDD/SSD Support
- Battery Backup (V20S-BAT)



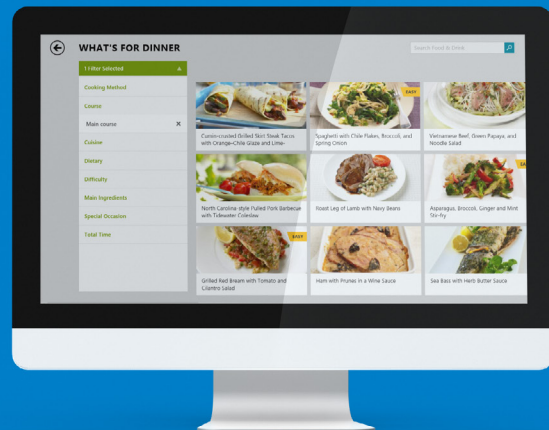
## ECS\* V20-BAT

- 19.5" 1600 x 900
- 10-Point Multi-Touch
- 1MP Webcam + DMIC
- 2.5" HDD/SSD Support



## WEIBU\* WB-A215D

- 21.5" 1920 x 1080
- Supported (Optional)
- 2MP Webcam
- 2.5" HDD/SSD Support with Optional mSATA



## JUMPER\* ET16

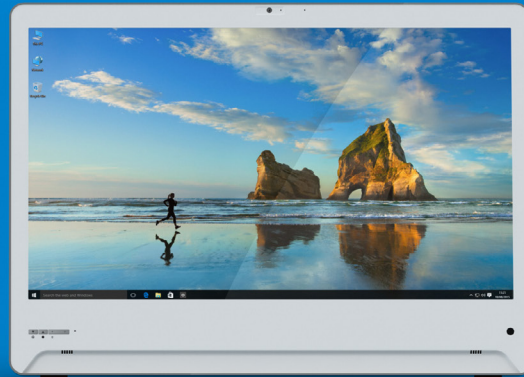
- 19.5" 1600 x 900
- Multi-Touch (Optional)
- 0.3-2.0MP Webcam Option
- 2.5" HDD/SSD Support



# CUSTOM ALL-IN-ONE PCS

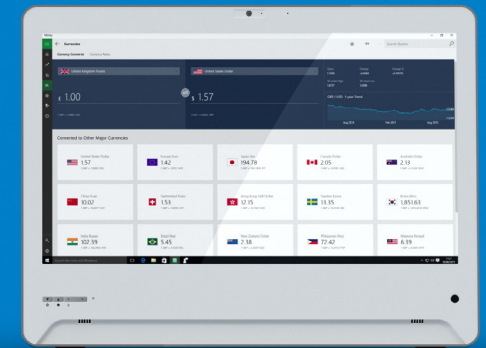
## SHUTTLE\* DH3 SERIES

- 23.6" 1920 x 1080
- HD Webcam + Dual Mic
- 2.5" HDD/SSD Support
- ODD
- 3-in-1 Card Reader



## SHUTTLE\* DH8 SERIES

- 18.5" 1366 x 768
- HD Webcam + Dual Mic
- 2.5" HDD/SSD Support
- ODD
- 3-in-1 Card Reader



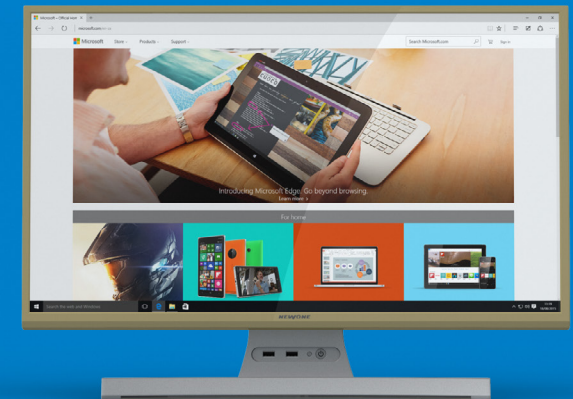
## SHUTTLE\* DH9 SERIES

- 19.5" 1366 x 768
- HD Webcam + Dual Mic
- 2.5" HDD/SSD Support
- ODD
- 3-in-1 Card Reader



## NEWONE\*

- 31.5"; 1920 x 1080
- 2.5"/3.5" HDD Support
- Wireless Optional
- VESA Mount
- Optional ODD



# CUSTOM ALL-IN-ONE PCS

## HIBERTEK\* MICRO

- 19.5"; 21.5"; 23"  
1600 x 900; 1920 x 1080p
- Touch Optional
- 1.3 - 2.0 MP Webcam
- 2 x 2.5" HDD/SSD



## LENGDA\* UM1

- 18.5" 1366 x 768
- Multi-Touch Option
- HD Webcam
- 2.5" HDD/SSD Support



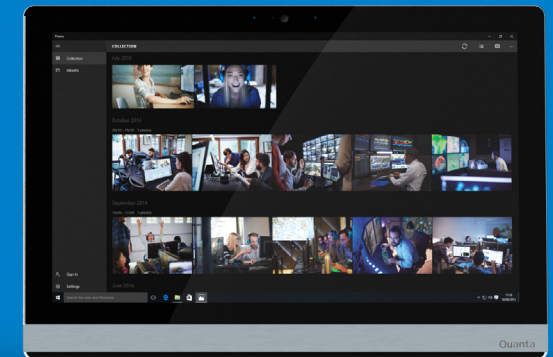
## LENGDA\* UM55

- 21.5" 1920 x 1080
- Nvidia\* GeForce GT730M/  
GT820/830/840M (Optional)
- 1MP Webcam
- 2.5" HDD/SSD Support
- ODD



## QUANTA\* DY1

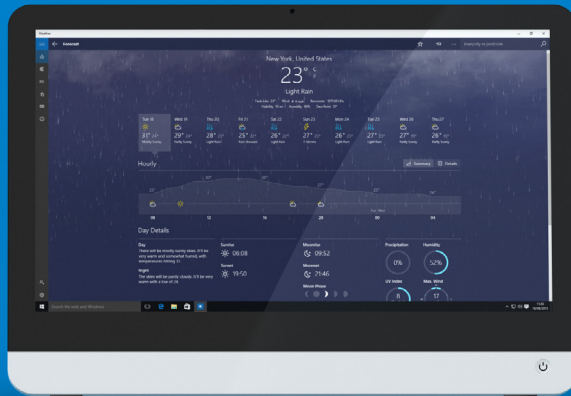
- 19.5" 1600 x 900
- 10-Point Multi-Touch  
(Optional)
- 1.0 MP Webcam + Mic
- 2.5" HDD/SSD Support



# CUSTOM ALL-IN-ONE PCS

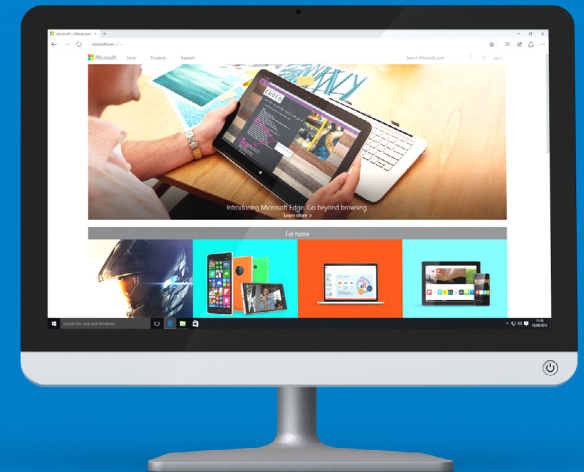
## THINKVIEW\* T-A2201P / T-A2202P

- 21.5" Full HD
- 1.0MP Webcam
- 2.5" HDD/SSD
- Micro ATX Board Support
- Micro ATX PSU 200W



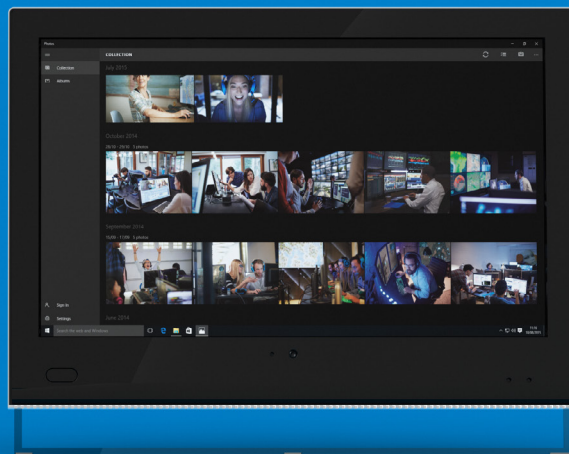
## THINKVIEW\* T-A2701P

- 27" Full HD
- 1.3/2.0MP Webcam
- 2.5" HDD/SSD
- Micro ATX Board Support
- Discrete Graphics Option



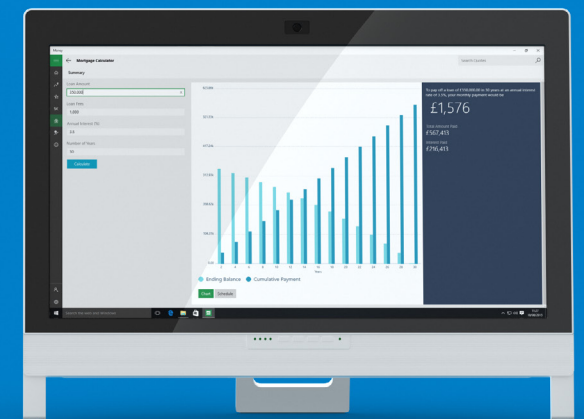
## TOP TECH\* TOP 215

- 21.5" 1920 x 1080
- Optional Single Touch
- 2.0 MP Webcam + Mic
- 3.5" / 2.5" HDD/SSD Support
- ATX / Micro-ATX / Mini ITX



## CLEVO\* A110SU/A110SU-T

- 21.5" 1920x1080
- Multi-Touch for A110SU-T
- 2.0 MP Full HD Webcam
- 3.5"/2.5" HDD/SSD Support
- 9-in-1 Card Reader



# CUSTOM ALL-IN-ONE PCS

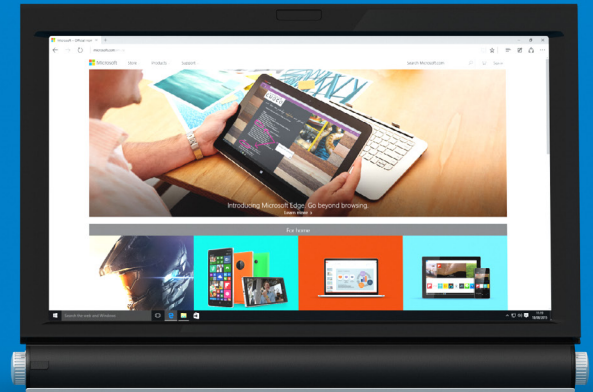
## PEGATRON\* SEEDIQ H81

- 23.6" Full HD
- 10-Point Multi-Touch
- Nvidia\* GeForce 830M Option
- 2.0MP Webcam Option + DMIC
- 2.5" or 3.5" HDD/SSD



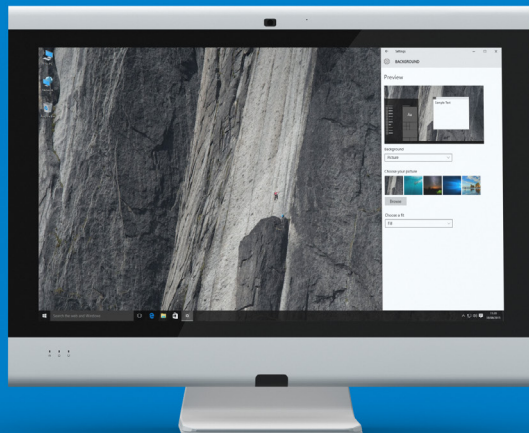
## PEGATRON\* DUBAI H81

- 21.5" Full HD
- 2 Point Optical Touch (Windows\* 7)
- 2.0MP Webcam
- Discrete Graphics Option



## DQ\* E241 GMG & E241/221/191GM

- 23.6" Full HD
- 10-Point Multi-Touch
- Graphics up to Geforce GTX680 (E241 GMG)
- 0.3-2.0MP Webcam Option
- 3.5"/2.5" HDD/SSD Support



## DQ\* E271/241/221GGG

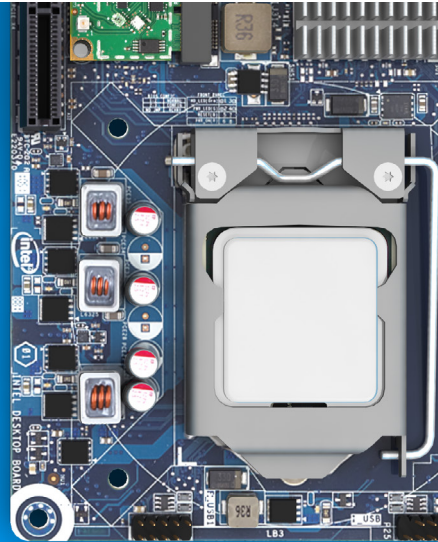
- 21.5"/24"/27" 1600 x 900;1920x1080
- Multi-Touch Option
- 1.3MP Webcam
- 3.5"/2.5" HDD/SSD Support
- PCIe\* 3 Nvidia\* Geforce GTX 780Option



# THIN MINI-ITX DESKTOP BOARDS

## POWERFUL COMPUTING

Thin mini-ITX Desktop Boards based on the Intel® 100 Series Chipset support 6th Generation Intel® Core™ Desktop Processor up to a 65 Watt TDP in the LGA1151 package.



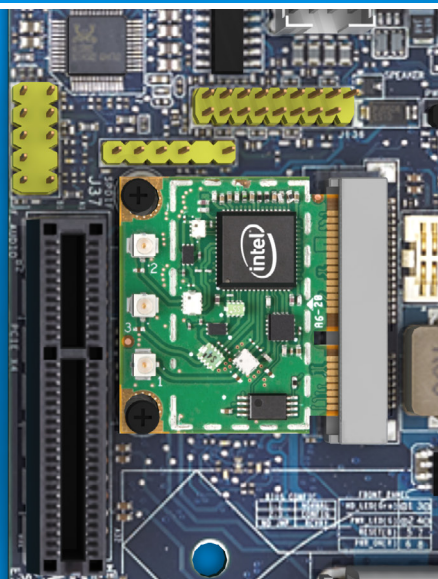
## EXCEPTIONAL GRAPHICS

Select 6th generation Intel® Core™ processors support 3D games in higher resolution, better details, faster frame rates, promoting an amazing mainstream gaming experience on an All-in-One PC.



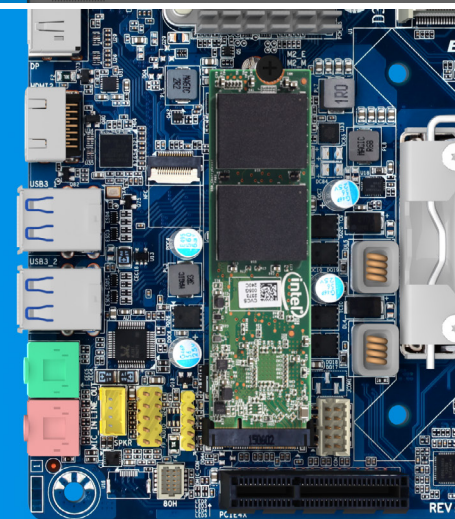
## MINI PCI-EXPRESS\*

Many thin mini-ITX Desktop boards support a combination of full size PCI-Express\* mini-card and half-size PCI-Express\* mini-card connectors, ideal for support of mSATA or M.2 solid state drives, WiFi adapters and third party TV Tuner modules.



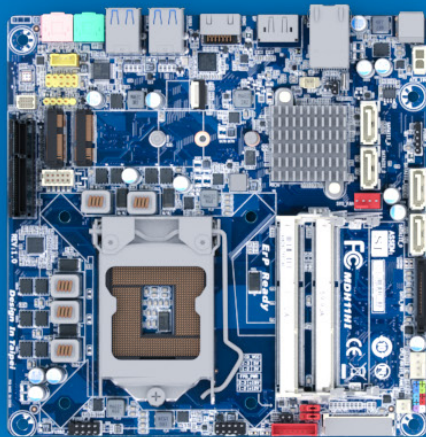
## M.2

M.2 is considered a next generation storage form factor and supports ultra-compact solid-state drive solutions. Select Thin Mini-ITX Desktop Boards include an M.2 connector. For information on available M.2 SSDs, go to [www.intel.com/go/ssd](http://www.intel.com/go/ssd)



# THIN MINI-ITX DESKTOP BOARDS BASED ON INTEL® 100-SERIES CHIPSETS

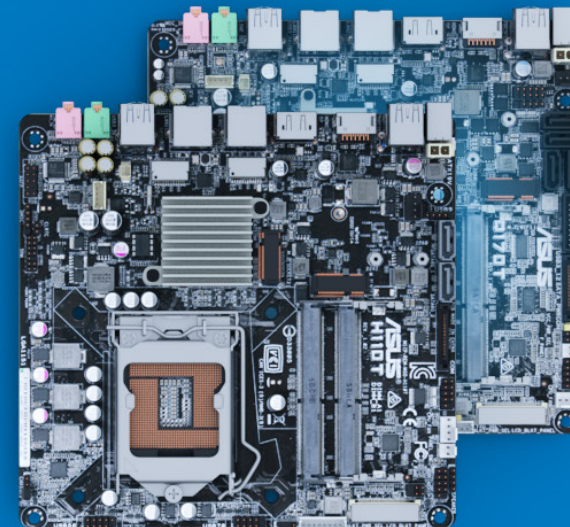
Thin Mini-ITX desktop boards support a wide range of AIO PC solutions, from entry level to feature rich premium systems.



## Gigabyte\* Thin Mini-ITX Desktop Boards

The **GIGABYTE\* MDG11HI Thin Mini-ITX Desktop Board** supports the latest **6th Generation Intel® Core™ processors** up to 65W TDP.

It includes support for dual channel DDR4 2133MHz memory, PCI Express\* M.2 slot, SATA Express or SATA3, LVDS, DisplayPort, HDMI and a combination of USB3 & USB2 connections.

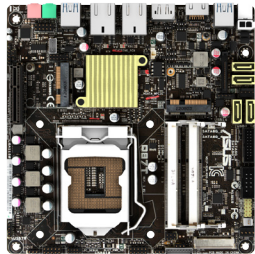


## Asus\* Thin Mini-ITX Desktop Boards

The **Asus\* H110T and Q170T Thin Mini-ITX Desktop Boards** support the latest **6th Generation Intel® Core™ processors** up to 65W TDP.

The boards includes support for SATA Express or SATA3, a combination of USB3 & USB2 connections, PCI Express\* M.2 slot, dual channel DDR4 2133MHz memory, LVDS, DisplayPort, and HDMI.

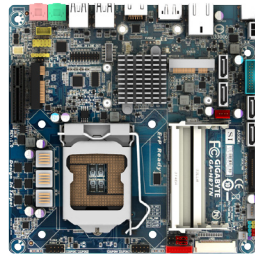
# INTEL® 8 SERIES THIN MINI-ITX BOARDS



## Asus\* Q87T

PCIe\* Mini Card Slot  
(Half & Full Length)  
mSATA Support (PCIe\*)

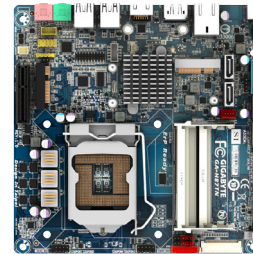
USB 3.0 & USB 2.0  
SATA III  
LVDS; EDP; HDMI; Display Port



## Gigabyte\* GA-Q87TN

PCIe\* Mini Card Slot  
(Half & Full Length)  
mSATA Support (PCIe\*)

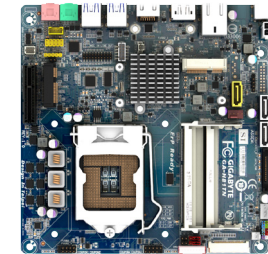
USB 3.0 & USB 2.0  
SATA III  
LVDS; HDMI; Display Port



## Gigabyte\* GA-H87TN

PCIe\* Mini Card Slot  
(Half & Full Length)  
mSATA Support (PCIe\*)

USB 3.0 & USB 2.0  
SATA III  
LVDS; HDMI; Display Port



## Gigabyte\* GA-H81TN

PCIe\* Mini Card Slot  
(Half & Full Length)  
mSATA Support (PCIe\*)

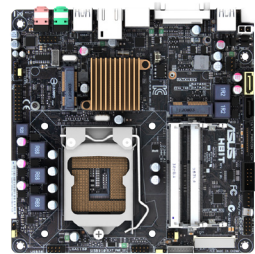
USB 3.0 & USB 2.0  
SATA II & SATA III  
LVDS; HDMI; Display Port



## Gigabyte\* GA-B85TN

PCIe\* Mini Card Slot  
(Half & Full Length)  
mSATA Support (PCIe\*)

USB 3.0 & USB 2.0  
SATA II & SATA III  
LVDS; HDMI; Display Port



## Asus\* H81T

PCIe\* Mini Card Slot  
(Half & Full Length)  
mSATA Support (PCIe\*)

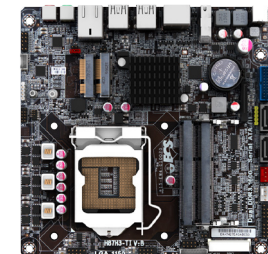
USB 3.0 & USB 2.0  
SATA III  
LVDS; HDMI; DVI/D



## Wibtek\* TH87G-SA

PCIe\* Mini Card Slot  
(Half & Full Length)  
mSATA Support (PCIe\*)

USB 3.0 & USB 2.0  
SATA III  
LVDS; HDMI



## ECS\* H87H3-TI

PCIe\* Mini Card Slot  
(Half & Full Length)  
mSATA Support (PCIe\*)

USB 3.0 & USB 2.0  
SATA III  
LVDS; HDMI; Display Port

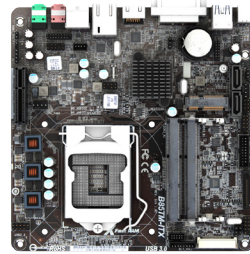
# INTEL® 8 SERIES THIN MINI-ITX BOARDS



## ECS\* H81H3-TI2

PCIe\* Mini Card Slot  
(Half & Full Length)  
mSATA Support (PCIe\*)

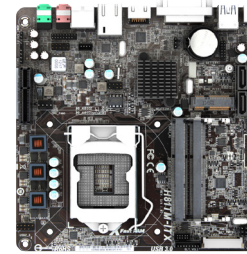
USB3.0 & USB 2.0  
SATA II & SATA III  
LVDS; HDMI



## ASRock\* B85TM-ITX

PCIe\* Mini Card Slot  
(Half Length)

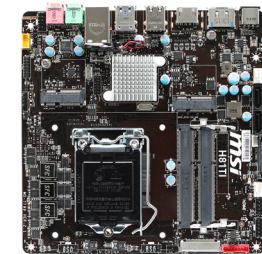
USB3.0 & USB 2.0  
SATA III  
LVDS; HDMI; DVI-I



## ASRock\* H81TM-ITX

PCIe\* Mini Card Slot  
(Half Length)

USB3.0 & USB 2.0  
SATA III  
LVDS; HDMI; DVI-I



## MSI\* H81TI

PCIe\* Mini Card Slot  
(Half Length)  
4K UHD Support

USB3.0 & USB 2.0  
SATA III  
LVDS; HDMI

# INTEL® 7 SERIES THIN MINI-ITX BOARDS



## Asrock\* Z77TM

PCIe\* Mini Card Slot  
(Half Length)  
mSATA Support (PCIe\*)

USB 2.0 & USB 3.0  
SATA III  
LVDS; HDMI; DVI-I



## Asrock\* H77TM

PCIe\* Mini Card Slot  
(Half Length)  
mSATA Support (PCIe\*)

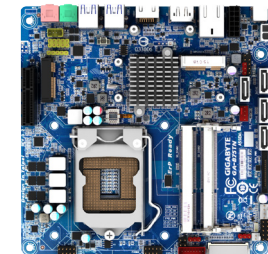
USB 3.0 & USB 2.0  
SATA II & SATA III  
LVDS; HDMI; DVI-I



## Asrock\* B75TM

PCIe\* Mini Card Slot  
(Half Length)  
mSATA Support (PCIe\*)

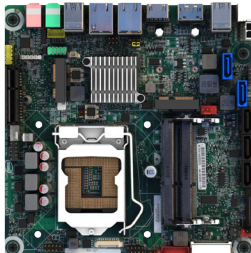
USB 3.0 & USB 2.0  
SATA II & SATA III  
LVDS; HDMI; DVI-I



## Gigabyte\* GA-B75TN

PCIe\* Mini Card Slot  
(Half & Full Length)

USB 2.0  
SATA II & SATA III  
LVDS; HDMI; Display Port



## Intel® DQ77KB

PCIe\* Mini Card Slot  
(Half & Full Length)

USB 2.0  
SATA II & SATA III  
LVDS; EDP; HDMI; Display Port

## THIN MINI-ITX AND ALL-IN-ONE PCS WITH MXM\*

# MXM\* 3.0

Extend the graphics and gaming performance of select All-In-One PC's by choosing a system with an MXM\* 3.0 discrete graphics module included. MXM\* solutions are currently offered by Wibtek\*, Mitac\*, KME\* and ECS\*.



# COMPATIBLE COMPONENTS



**6th Generation  
Intel® Core™ Processors**

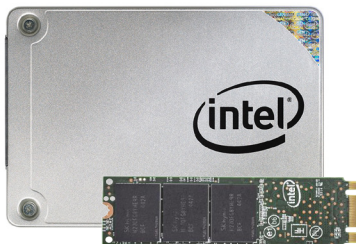


**4th and 5th Generation  
Intel® Core™ Processors**



**Intel® Wireless Adapters**

Intel® Dual Band Wireless-AC 8260 (802.11ac/a/b/g/n);  
Intel® Dual Band Wireless-AC 7265 (802.11ac/a/b/g/n);  
Intel® Dual Band Wireless-AC 7260 (802.11ac/a/b/g/n)



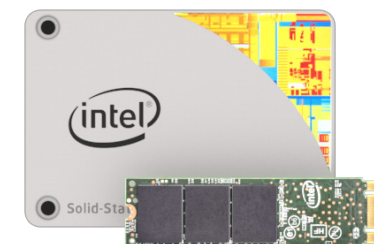
**Intel® SSD Pro 5400s Series**

2.5" / M.2 Interface



**Intel® SSD 540s Series**

2.5" / M.2 Interface



**Intel® SSD 535 Series**

2.5" / M.2 Interface

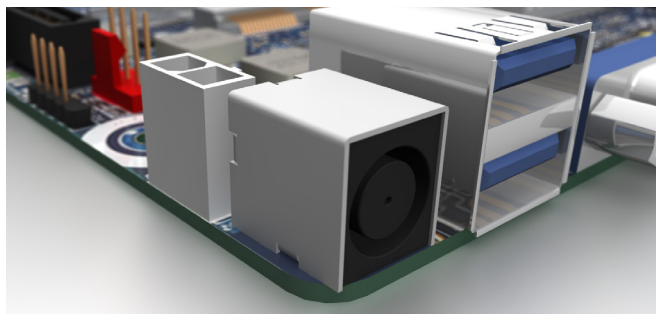
# POWER ADAPTER DESIGNS FOR ALL-IN-ONE PCS AND SMALL FORM FACTOR CHASSIS

Maker	Model P/N	Wattage	Voltage
Liteon	PA-1231-66HP	230W	19V
Seasonic	SSA-0901-19	120W	19V
Seasonic	SSA-1201-19	90W	19V
Bestec	BT-AG121EBF	120W	19V
Bestec	NA9002WBB	90W	19V
Bestec	NA6501WB	65W	19V
FSP	FSP135-ABAN2	135W	19V (C14)
FSP	FSP135-ABBN2	135W	19V (C6)
FSP	FSP135-ABCN2	135W	19V (C8)
FSP	FSP120-ABAN2	120W	19V (C14)

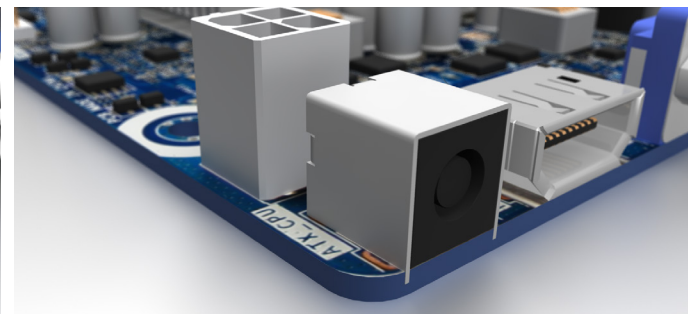
Maker	Model P/N	Wattage	Voltage
FSP	FSP120-ABBN2	120W	19V (C6)
FSP	FSP120-ABCN2	120W	19V (C8)
FSP	FSP090-DIEBN2	90W	19V (C6)
FSP	FSP090-DIECN2	90W	19V (C8)
FSP	FSP090-ABAN2	90W	19V (C14)
FSP	FSP090-ABBN2	90W	19V (C6)
FSP	FSP065-REBN2	65W	19V (C6)
FSP	FSP065-RECEN2	65W	19V (C8)
FSP	FSP065-RSCN1	65W	19V (Slim type C8)
FSP	FSP065-10AADA	65W	19V (wall mount type, exchangeable plug- US/ EU plug)



Mainstream Desktop Board  
Power Connector



Standard 19V Connector  
Intel® Core™ Based Boards



Standard 19V Connector  
Intel® Atom™ Based Boards

# LEGAL INFORMATION

For more information on designing for the Thin Mini-ITX platform, visit [intel.com/go/aio](http://intel.com/go/aio)

For more information on purchasing these components, visit [intel.com/reseller](http://intel.com/reseller)

Intel accepts no responsibility for any issues with configurations marked as “Fully compatible” because third party products are subject to change and modifications without notification of Intel Corporation.

\*\* Performance tests and ratings are measured using specific computer systems and/or components and reflect the approximate performance of Intel products as measured by those tests. Any difference in system hardware or software design or configuration may affect actual performance. Buyers should consult other sources of information to evaluate the performance of systems or components they are considering purchasing. For more information on performance tests and on the performance of Intel products, visit [intel.com/performance/resources/benchmark\\_limitations.htm](http://intel.com/performance/resources/benchmark_limitations.htm)

INFORMATION IN THIS DOCUMENT IS PROVIDED IN CONNECTION WITH INTEL™ PRODUCTS. NO LICENCE, EXPRESS OR IMPLIED, BY ESTOPPEL OR OTHERWISE, TO ANY INTELLECTUAL RIGHTS IS GRANTED BY THIS DOCUMENT. EXCEPT AS PROVIDED IN INTEL'S TERMS AND CONDITIONS OF SALE FOR SUCH PRODUCTS, INTEL ASSUMES NO LIABILITY WHATSOEVER, AND INTEL DISCLAIMS ANY EXPRESS OR IMPLIED WARRANTY, RELATING TO SALE AND/OR USE OF INTEL PRODUCTS INCLUDING LIABILITY OR WARRANTIES RELATING TO FITNESS FOR A PARTICULAR PURPOSE, MERCHANTABILITY, OR INFRINGEMENT OF ANY PATENT, COPYRIGHT OR OTHER INTELLECTUAL PROPERTY RIGHT. UNLESS OTHERWISE AGREED IN WRITING BY INTEL, THE INTEL PRODUCTS ARE NOT DESIGNED NOR INTENDED FOR ANY APPLICATION IN WHICH THE FAILURE OF THE INTEL PRODUCT COULD CREATE A SITUATION WHERE PERSONAL INJURY OR DEATH MAY OCCUR.

Intel may make changes to specifications and product descriptions at any time, without notice. Designers must not rely on the absence or characteristics of any features or instructions marked “reserved” or “undefined.” Intel reserves these for future definition and shall have no responsibility whatsoever for conflicts or incompatibilities arising from future changes to them. The information here is subject to change without notice. Do not finalize a design with this information.

The products described in this document may contain design defects or errors known as errata which may cause the product to deviate from published specifications. Current characterized errata are available on request. Contact your local Intel sales office or your distributor to obtain the latest specifications and before placing your product order. Copies of documents which have an order number and are referenced in this document, or other Intel literature, may be obtained by calling 1-800-548-4725, or by visiting Intel's Web site at [www.intel.com](http://www.intel.com)

Copyright© 2016 Intel Corporation. All rights reserved. Intel, the Intel logo, and Core are trademarks of Intel Corporation in the U.S and other countries.

\* Other names and brands may be claimed as the property of others.



Please Recycle