

Designed for Students

PRODUCT BRIEF

Intel classmate PC-Convertible

Intel® Atom™ processor N2600 (dual-core)

Part of the Intel® Learning Series



“The Convertible classmate PC is the ideal product for our learning environment. The PC is going to get knocked around during the day. It’s casing is really robust, so it’s really well protected. It can be dropped and it still works fine. The swivel screen is also a great feature—it can be turned into a tablet, and touch screen functionality also adds another great dimension to the product.”

*David Vernon
Math Teacher,
Broadgreen County Primary, Liverpool*

Success on a global scale

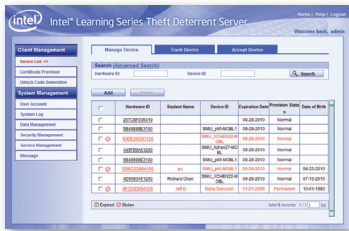
The next-generation of the Convertible Intel classmate PC brings enhanced teaching and learning to students around the world with new education-specific hardware features and software applications. Improved durability, flexibility, and security make the classmate PCs a sound investment for schools and nations seeking solid 1:1 eLearning outcomes.

Convertible classmate PCs are affordable, rugged netbooks designed for interactive, collaborative learning. They instantly convert from clamshell to touch-optimized tablet mode, giving students expanded flexibility and micro-mobility inside and outside the classroom.

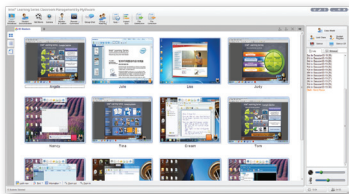
Based on extensive research in classrooms worldwide and in collaboration with educators and local vendors, Convertible classmate PCs bring advantages from localized content to interoperability with school networks and infrastructures.

- Enable best practices for 1:1 eLearning, 21st century skill development, and measurable results
- Deployed by a wide ecosystem of local vendors with geographically appropriate software, services, and technical support
- Part of the Intel® Learning Series, a cost-effective, end-to-end solution delivering culturally relevant content, sustainability, and support for local economies

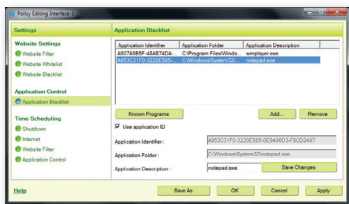




Theft Deterrent



Classroom Management



Access Management



LabCam Home

Intel® Learning Series Software Suite

The Intel® Learning Series Software Suite provides a more collaborative, secure, enhanced, and easy-to-use experience. Optimized for improvements in performance, stability, and scalability, it has been tested in real-world 1:1 eLearning environments.

- **Students:** Reading, writing, painting, drawing, and collaboration tools to help students learn and improve core skills.
- **Teachers:** Optimized for wireless classroom environments, the classroom management application supports collaboration, group teaching, testing, and file transfer for efficient organization and assessment.
- **IT Administrators:** The trusted platform module (TPM)-based hardware and software theft deterrent solution helps protect capital and operational investments. Theft deterrence includes setting certificate-based policies that are hardware-hardened and BIOS-enforced.
- **Parents:** An access management application allows parents to set and monitor children’s access at home.

New Intel® Learning Series Software Suite Features

Enhanced Classroom Management

- User-friendly, collaborative classroom solution
- Optimized performance in wireless classroom environments
- Group teaching, instant quiz, and student screen thumbnail features
- Improved file distribution and collection features

More Secure Theft Deterrent

- Improved scalability supports large-scale deployment of distributed and centralized modes
- Improved usability and manageability, including in time agent status updates; smart network heartbeat to lower network traffic; smart agent upgrade; protection against uninstalling or changing settings to ensure stability and connectivity

Easier IT Management, System Recovery Tool

- View and manage students’ computers easily from school or district servers
- Improved recovery, backup, and restore functions
- McAfee* anti-virus protection for digital safety

Improved Pen Input, Note Taker, Painting and Drawing, and LabCam

- Enables a smoother, more natural and consistent touch and feel
- Accurate and consistent performance for writing
- Ergo-friendly with easy palm resting
- Allows a more natural writing experience with pressure-sensing digitizer
- Optimized e-reader with multiple format support and annotation
- WebCam-based natural science exploration tool

System Configuration of an Intel Classmate PC-Convertible

Part of the Intel® Learning Series



Processor/Chipset	<ul style="list-style-type: none"> Intel® Atom™ processor N2600 (dual-core) Intel® NM10 Express chipset
Memory	<ul style="list-style-type: none"> 1GB/2GB DDR3-800Mhz
Storage	<ul style="list-style-type: none"> 32G/16G/8G SSD, 2.5" SATA HDD
LCD	<ul style="list-style-type: none"> 10.1" 1024 x 600 water-resistant touch screen 10.1" 1366 x 768 optional display Convertible: traditional or touch-optimized tablet mode Palm-resting feature allows students to write and draw comfortably Optional capacitive touch and digitizer for fine writing experience
Operating System	<ul style="list-style-type: none"> Windows* 7/Linux*
Security	<ul style="list-style-type: none"> Trusted platform module (TPM)-based Intel Learning Series theft deterrent solution
Keyboard/Touch Pad	<ul style="list-style-type: none"> Water-resistant keyboard (100cc /83 keys) Water-resistant touch pad (integrated vertical scrolling) Rugged keyboard with anti-peeling keys
Camera	<ul style="list-style-type: none"> Built-in 0.3 MP/1.3 MP/2.0 MP rotatable camera
Audio	<ul style="list-style-type: none"> Integrated audio; built-in speaker and digital microphone
Accelerometer (Motion Sensor)	<ul style="list-style-type: none"> Tilt the Intel convertible classmate PC and the display switches smoothly from portrait to landscape HDD protection
Handle	<ul style="list-style-type: none"> Integrated retractable handle supports micromobility in the classroom
System I/O	<ul style="list-style-type: none"> 1 SD slot, VGA port, 1 half-size mini-card slot (PCI Express), and 1 full-size mini-card slot Dual audio out jacks, 2 x USB 2.0 ports, optional 3rd USB or HDMI port
LAN/WLAN	<ul style="list-style-type: none"> 10M/100M Ethernet 802.11b/g/n WLAN a/b/g/n WLAN--2.4GHz/5GHz dual band (optional) 3G/WiMAX* (optional)
Battery	<ul style="list-style-type: none"> 6-cell battery (11.5 hrs) (5200mAh)¹ 3-cell battery (4.7 hrs) (2200mAh)¹ Quick charging (3 cell only)
Custom Mini-Chassis	<ul style="list-style-type: none"> Size including handle: 268mm (wide) X 210mm (deep) (29~39mm) Weight: 1450Kg (SSD, 3 cell, Resistive TS), 1650Kg (HDD, 6 cell, N-trig TS)
Drop Test	<ul style="list-style-type: none"> 70 cm system off, 50cm with system on (SSD)

1. Based on 10.1" LCD and defined brightness, WiFi off, and camera disabled. Actual battery life may vary based on product settings, usage patterns, and environmental conditions.

Real classmate PCs for real-world achievement

The Intel Classmate PC—Convertible

Purpose-built for education, these netbooks are delivered by local vendors, providing geographically relevant, culturally appropriate teaching and learning solutions—and ongoing local service and support.

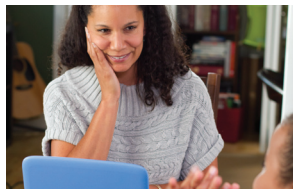
Education Policy Makers and School Administrators



- Intel supports an extensive ecosystem (Intel® Learning Series Alliance) to provide a complete education solution, including access, connectivity, hardware, software, localized content, and professional development for teachers

- Built on reliable Intel® architecture with “real PC” performance
- Pre-loaded with operating system, and education and classroom management applications
- Runs hundreds of mainstream popular applications
- Built to withstand everyday use by active students, with rugged construction, sturdy plastic cases, handles, water-resistant keyboard, touch pad, and LCD screen; capable of withstanding a drop from 70cm
- Cost-effective; works easily and reliably with the other hardware and software in the Intel Learning Series
- Built-in wireless connectivity for easy network and Internet connections

Parents



- Education-specific features and software designed to help children learn
- Internet filtering so children can safely explore the Internet
- Water-resistant keyboard

- Durable construction and outer case, built to withstand a drop from 70cm
- Supports educational activities at school and at home

Teachers



- Purpose-built for education to support individual learning styles and help students stay engaged
- Enhances curriculum through access to Internet resources, multi-media, and localized digital content

- Allows real-time testing and assessment
- Classroom management software helps facilitate interactive, student-led learning
- Access-management features include content filtering, scheduling, logging, and program blocking, helping teachers to ensure child-appropriate content and monitor technology use
- Easy file sharing and group content creation for classroom collaboration
- Lightweight and compact; offers micromobility, allowing for natural, comfortable use, whether students are sitting, standing, or moving about
- Intel Learning Series solutions include technical and pedagogical teacher training

Students



- Provides engaging, interactive ways for students to absorb information and create content
- Converts instantly from a clamshell design to a tablet PC
- Advanced palm-resting technology

- for full hand support when writing or drawing in tablet mode
- Stylus for writing and drawing directly on screen; handwriting recognition and note-taking/annotation software for natural content input, without typing
- Built-in rotational camera simplifies capturing photos
- Built-in audio and microphone to experience and create content

To find out more about the Intel® Learning Series, visit <http://www.intellearningseries.com>.

For sales information, contact your Intel Authorized Reseller.

