

Software Evaluation Guide for Photodex* ProShow Gold 4.0



[http://www.intel.com/content/www/us/en/benchmarks/
resources-performance-documents.html](http://www.intel.com/content/www/us/en/benchmarks/resources-performance-documents.html)

INFORMATION IN THIS DOCUMENT IS PROVIDED IN CONNECTION WITH INTEL PRODUCTS. NO LICENSE, EXPRESS OR IMPLIED, BY ESTOPPEL OR OTHERWISE, TO ANY INTELLECTUAL PROPERTY RIGHTS IS GRANTED BY THIS DOCUMENT. EXCEPT AS PROVIDED IN INTEL'S TERMS AND CONDITIONS OF SALE FOR SUCH PRODUCTS, INTEL ASSUMES NO LIABILITY WHATSOEVER AND INTEL DISCLAIMS ANY EXPRESS OR IMPLIED WARRANTY, RELATING TO SALE AND/OR USE OF INTEL PRODUCTS INCLUDING LIABILITY OR WARRANTIES RELATING TO FITNESS FOR A PARTICULAR PURPOSE, MERCHANTABILITY, OR INFRINGEMENT OF ANY PATENT, COPYRIGHT OR OTHER INTELLECTUAL PROPERTY RIGHT.

UNLESS OTHERWISE AGREED IN WRITING BY INTEL, THE INTEL PRODUCTS ARE NOT DESIGNED NOR INTENDED FOR ANY APPLICATION IN WHICH THE FAILURE OF THE INTEL PRODUCT COULD CREATE A SITUATION WHERE PERSONAL INJURY OR DEATH MAY OCCUR.

Intel may make changes to specifications and product descriptions at any time, without notice. Designers must not rely on the absence or characteristics of any features or instructions marked "reserved" or "undefined." Intel reserves these for future definition and shall have no responsibility whatsoever for conflicts or incompatibilities arising from future changes to them. The information here is subject to change without notice. Do not finalize a design with this information.

The products described in this document may contain design defects or errors known as errata which may cause the product to deviate from published specifications. Current characterized errata are available on request.

Contact your local Intel sales office or your distributor to obtain the latest specifications and before placing your product order.

Copies of documents which have an order number and are referenced in this document, or other Intel literature, may be obtained by calling 1-800-548-4725, or go to: <http://www.intel.com/design/literature.htm>

Software and workloads used in performance tests may have been optimized for performance only on Intel microprocessors. Performance tests, such as SYSmark* and MobileMark*, are measured using specific computer systems, components, software, operations and functions. Any change to any of those factors may cause the results to vary. You should consult other information and performance tests to assist you in fully evaluating your contemplated purchases, including the performance of that product when combined with other products. For more complete information about performance and benchmark results, visit www.intel.com/benchmarks

*Other names and brands may be claimed as the property of others.

Copyright © 2011 Intel Corporation. All rights reserved.

About this Document

This document is a guide measuring performance of the Intel® Processors on application software. The primary audience for this document includes individuals, publications, OEMs and technical analysts whose goal is to test or evaluate the performance benefits and features of the Intel® Processors. If there are questions that are not answered here on software application performance evaluation of the Intel® Processors, please contact your Intel representative.

Each software application test measures different aspects of processor and/or system performance. While no single numerical measurement can completely describe the performance of a complex device like a microprocessor or a personal computer, application tests can be useful tools for comparing different components and systems. The following results and procedures give a glimpse of the performance of certain software applications, however your own usage of each application may vary from what is shown here. The only totally accurate way to measure the performance of your system, is to test the actual software applications you use, in the way you use them, on your computer system. Test results published by Intel are measured on specific systems or components using specific hardware and software configurations, and any differences between those configurations (including software) and your configuration may make those results inapplicable to your component or system.

Software application tests are, at most, only one kind of information that you may use during the purchasing process. To get a true picture of the performance of a component or system you are considering purchasing, you must consult other sources of information (such as performance information on the exact system you are considering purchasing). If you have any questions about the [performance of any Intel microprocessor](#), please view the detailed performance briefs and reports published by Intel or call Intel at (US) 1-800-628-8686 or 916-356-3104.

Chapter 1

Processor Performance on Photodex* ProShow Gold 4.0

1.0 Software Description

Photodex* ProShow Gold 4.0 allows the user to combine photos, videos and music to create HD DVD quality slide shows. The software provides the capability to share memories with friends and family on DVD, PC, and the Web. ProShow Gold 4.0 brings still photos to life by adding motion effects. The user can also add captions to a photo or video and choose from over 280 exciting transition effects.

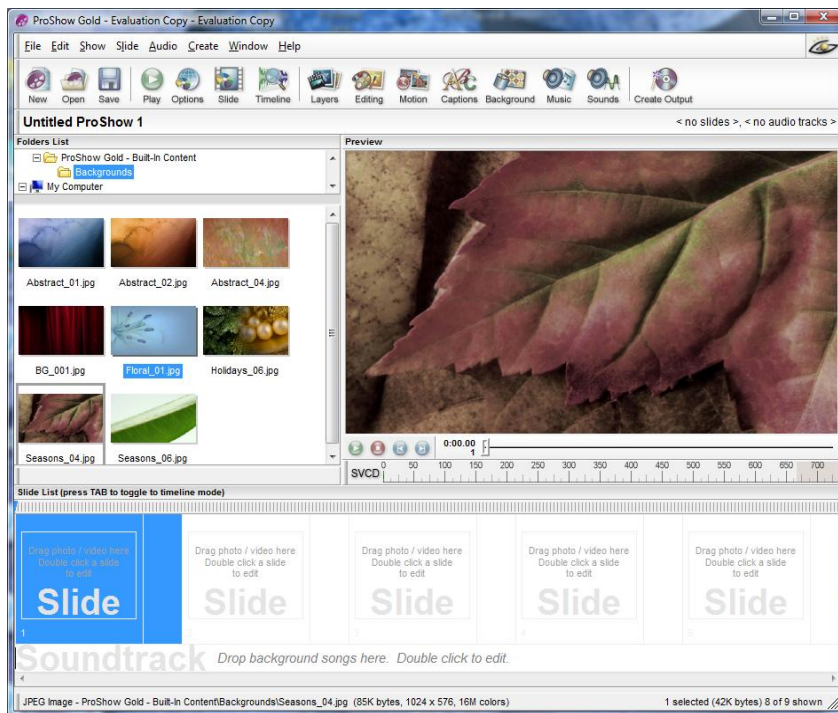
1.1 Test Workflow/Workload Description

John wanted to put together a slideshow for his parents 30 year wedding anniversary as a gift. He gathered all the photos/videos of important events and added his parents' favorite songs to create a digital walk down memory lane using ProShow Gold 4.0. He browsed through his family photo archive and selected 29 of his favorite high resolution JPEG photos and converted them to an MPEG-2 1080p HD DVD quality slideshow video file. The photos were in 3872x2592 resolution and the total storage required was about 170MB. The output slideshow runs for 3 minutes and 9 seconds. Seeing tears in his mom's eyes made all of John's hard work worthwhile.

Procedure for Evaluating Performance

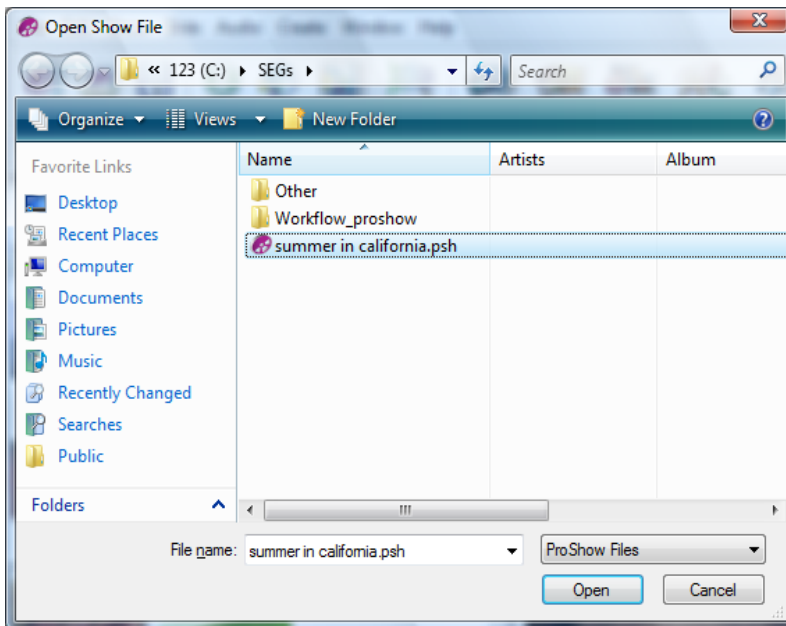
The following is a procedure for evaluating performance while running Photodex* ProShow Gold 4.0

1. Download ProShow Gold 4.0 from <http://www.photodex.com> and place it on your desktop.
2. Double click the installation binary psgold_40_2549.exe on your desktop and install ProShow Gold with default settings.
3. Reboot your computer.
4. Click the icon that says ProShow Gold on your desktop. The dialog below will appear.

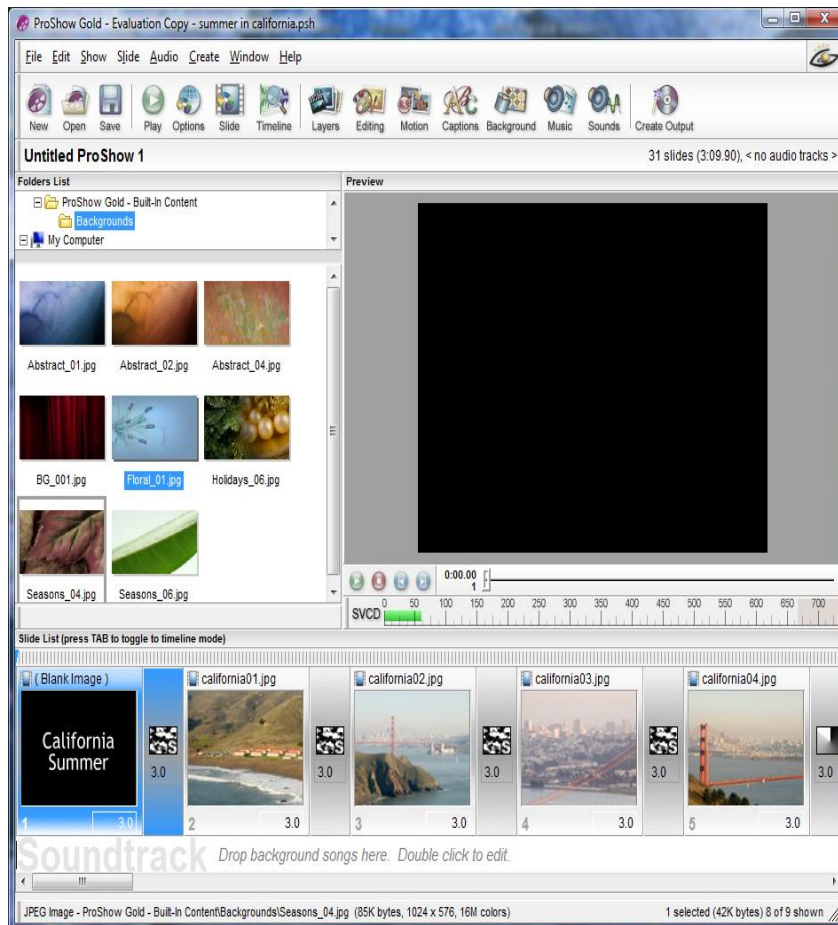


5. Click on the File menu and select Open.

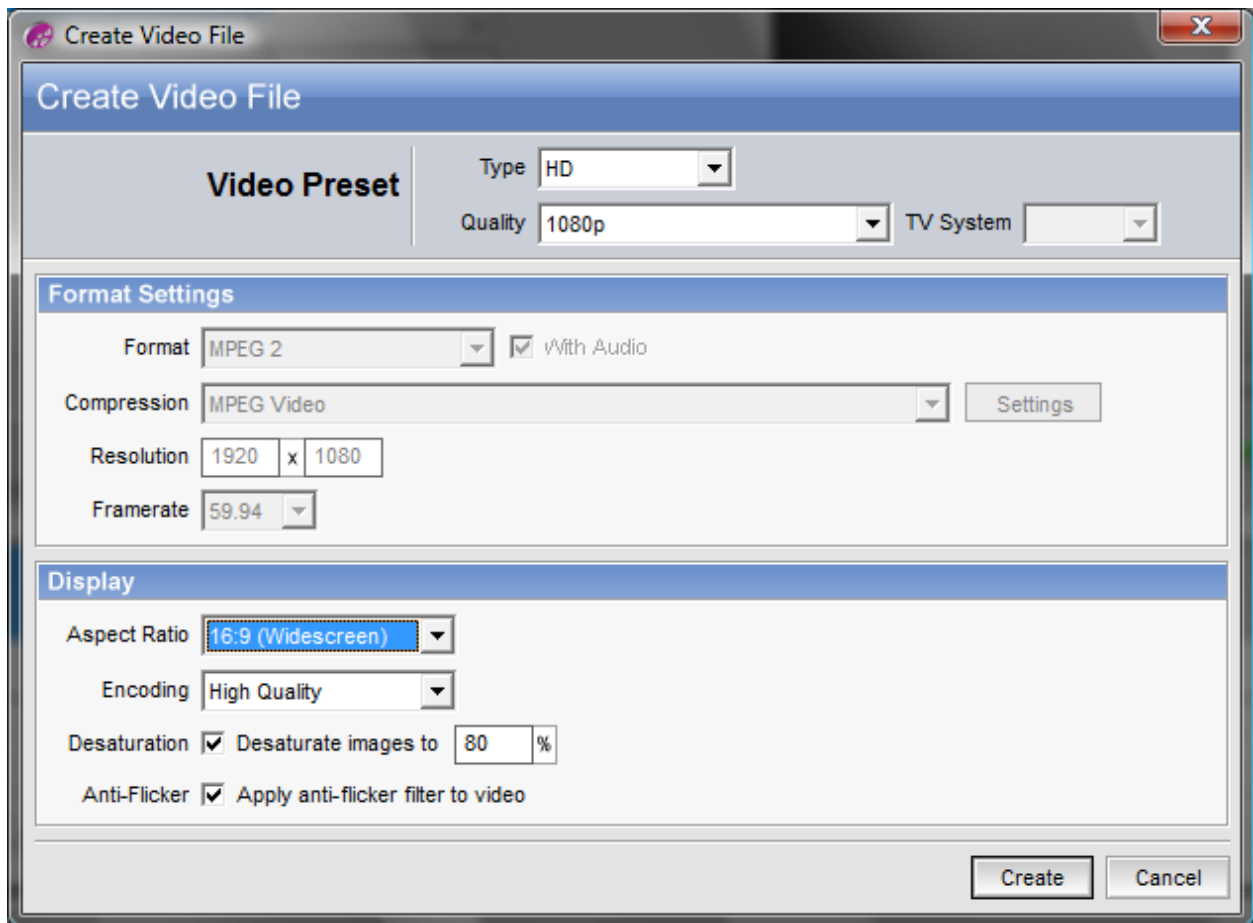
6. In the dialog below, choose the summer in california.psh project and open it.



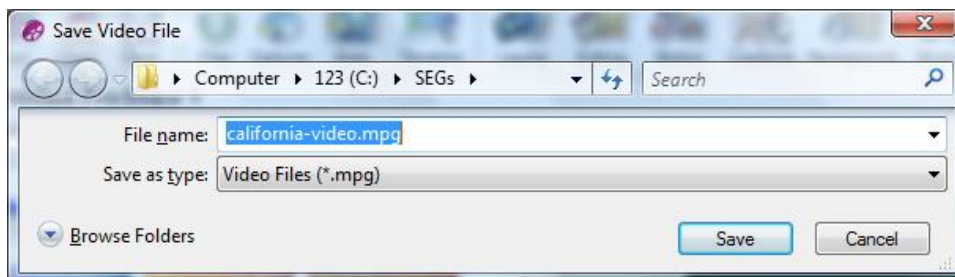
7. After clicking on Open, the project should appear



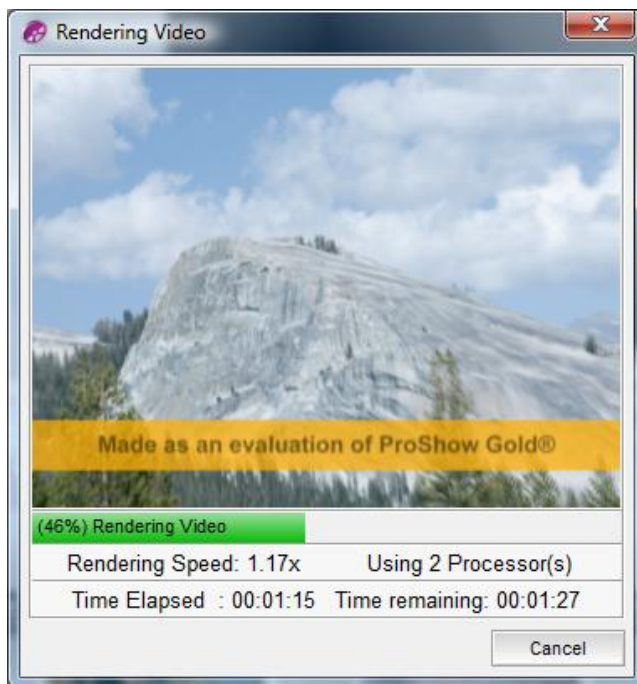
8. Click on the Create menu and then select the item for Video File. The dialog below will appear. The settings should be set to match what is shown. The type and quality presets should be set to HD and Quality 1080p. The aspect ratio should be set to 16x9 widescreen and the Encoding set to High Quality.



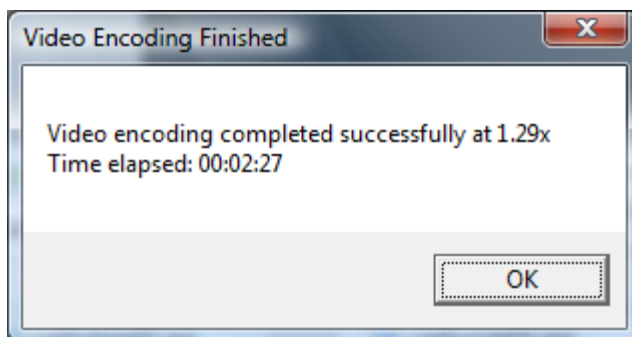
9. Click the Create button.
10. Name the output file. In this example, the output is named california-video.mpg.



11. Click the Save button. While encoding is in progress, the progress dialog bar below will appear.



12. When video encoding has finished, the dialog below will appear.



13. Record the Time elapsed. This is how long the system needed to encode the video. Click OK and delete output files before running the test again.