

# Software Evaluation Guide for Pinnacle Studio 12 Ultimate\*

## “Burning HD video to Blu-ray Disc”



<http://www.intel.com/performance/resources>

Information in this document is provided in connection with Intel products. No license, express or implied, by estoppel or otherwise, to any intellectual property rights is granted by this document. Except as provided in Intel's Terms and Conditions of Sale for such products, Intel assumes no liability whatsoever, and Intel disclaims any express or implied warranty, relating to sale and/or use of Intel products including liability or warranties relating to fitness for a particular purpose, merchantability, or infringement of any patent, copyright or other intellectual property right. Intel products are not intended for use in medical, life saving, or life sustaining applications.

Intel may make changes to specifications and product descriptions at any time, without notice.

Designers must not rely on the absence or characteristics of any features or instructions marked "reserved" or "undefined." Intel reserves these for future definition and shall have no responsibility whatsoever for conflicts or incompatibilities arising from future changes to them.

Intel® Processors may contain design defects or errors known as errata. Current characterized errata are available on request.

Hyper-Threading Technology requires a computer system with an Intel® Core i7 or an Intel Pentium 4 Processor supporting HT Technology and an HT Technology enabled chipset, BIOS and operating system. Performance will vary depending on the specific hardware and software you use. See [www.intel.com/info/hyperthreading](http://www.intel.com/info/hyperthreading) for more information including details on which processors support HT Technology.

Contact your local Intel sales office or your distributor to obtain the latest specifications and before placing your product order.

Copies of documents which have an ordering number and are referenced in this document, or other Intel literature, may be obtained by calling 1-800-548-4725 or by visiting Intel's Website at <http://www.intel.com>

Performance tests and ratings are measured using specific computer systems and/or components and reflect the approximate performance of Intel products as measured by those tests. Any difference in system hardware or software design or configuration may affect actual performance. Buyers should consult other sources of information to evaluate the performance of systems or components they are considering purchasing. For more information on performance tests and on the performance of Intel products, visit [Intel Performance Benchmark Limitations](http://www.intel.com/performance/resources/limits.htm) (<http://www.intel.com/performance/resources/limits.htm>).

Copyright © 2008 Intel Corporation.

\* Other names and brands may be claimed as the property of others.

## About this Document

---

This document is a guide measuring performance of the Intel® Processors on application software. The primary audience for this document includes individuals, publications, OEMs and technical analysts whose goal is to test or evaluate the performance benefits and features of the Pentium Processor. If there are questions that are not answered here on software application performance evaluation of the Pentium Processor, please contact your Intel representative.

Each software application test measures different aspects of processor and/or system performance. While no single numerical measurement can completely describe the performance of a complex device like a microprocessor or a personal computer, application tests can be useful tools for comparing different components and systems. The following results and procedures give a glimpse of the performance of certain software applications, however your own usage of each application may vary from what is shown here. The only totally accurate way to measure the performance of your system, is to test the actual software applications you use, in the way you use them, on your computer system. Test results published by Intel are measured on specific systems or components using specific hardware and software configurations, and any differences between those configurations (including software) and your configuration may make those results inapplicable to your component or system.

Software application tests are, at most, only one kind of information that you may use during the purchasing process. To get a true picture of the performance of a component or system you are considering purchasing, you must consult other sources of information (such as performance information on the exact system you are considering purchasing). If you have any questions about the [performance of any Intel microprocessor](#), please view the detailed performance briefs and reports published by Intel or call Intel at (US) 1-800-628-8686 or 916-356-3104.

## Chapter 1

# Pinnacle Studio 12 Ultimate\*

---

### 1.0 Software Description

Pinnacle Studio 12 Ultimate\* is a creative video-editing software that allows you to work with the latest in HD editing from AVCHD to Blu-ray. After editing and polishing your video, export them to portable devices, high-definition discs, or even publish them on YouTube\* through Pinnacle Studio's built-in disc burning and web publishing features. For more information and for the latest updates, please visit <http://www.pinnaclesys.com>

### 1.1 Test Workload Description

The workload consists of a one minute high-definition AVC-HD 1080P video clip from a HD camcorder being imported in a project timeline and then encoded into an AVC-HD Blu-Ray disc folder structure ready to be burned to a disc.

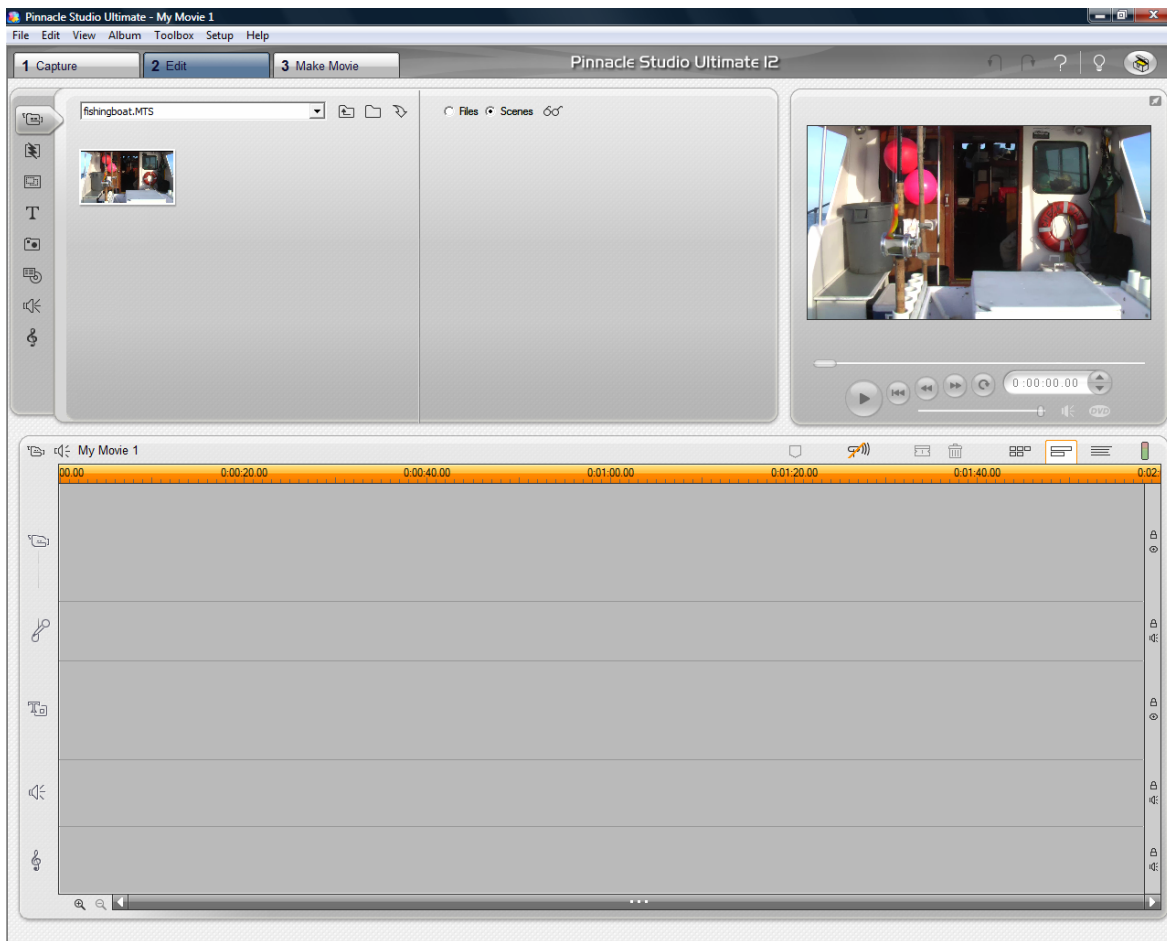
## Chapter 2

# Procedure for Evaluating Performance in Pinnacle Studio 12 Ultimate\*

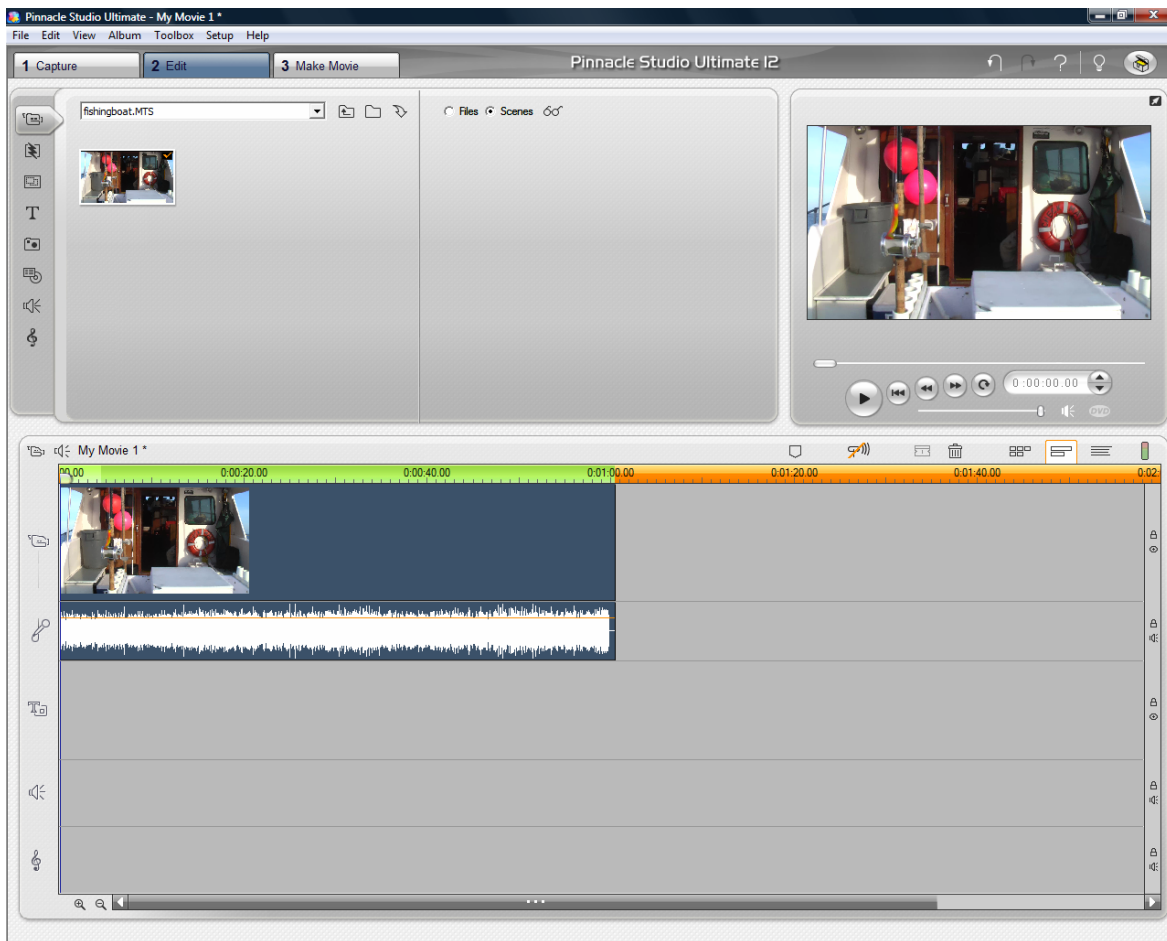
---

The following is a procedure for evaluating performance in Pinnacle Studio 12 Ultimate\*.

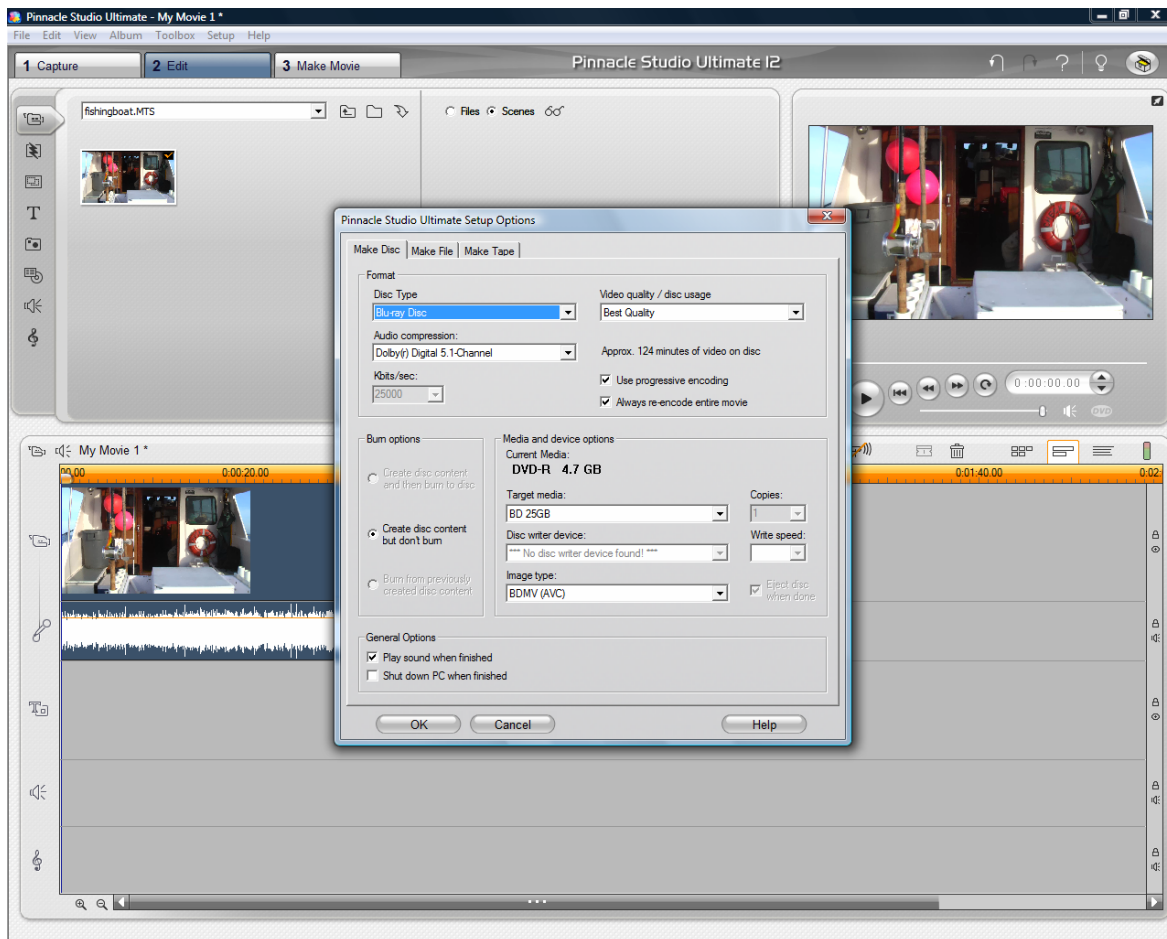
1. Install Pinnacle Studio 12 Ultimate\* with default options.
2. Create a local folder C:\PinnacleStudio\_WL and copy the workload files to it. Reboot the system.
3. Launch Pinnacle Studio 12 Ultimate by clicking on the Start menu, then selecting All Programs->Pinnacle Studio 12->Pinnacle Studio 12. Activate features if prompted to do so.
4. Click on the "2 Edit" tab.
5. On the left side of the screen, make sure you are in the "Show videos" tab which is the picture of a camcorder.
6. Open the fishingboat.MTS file by pressing the middle button that looks like a folder and navigating to the file in the workload folder C:\PinnacleStudio\_WL.



7. Drag the fishingboat.MTS clip to the video track at the bottom of the screen and start your measurement.
8. Stop taking measurement once the green bar turns orange. This time measurement is the import time.



9. Click on the "3 Make Movie" tab.
10. Select the "Disc" tab on the left side of the screen.
11. Change the "Disc Type" to Blu-ray Disc and "Video Quality / Disc Usage" to Best Quality.
12. Press the "Settings" button and make sure they are as follows
  - Disc Type: Blu-Ray Disc
  - Video quality / disc usage: Best Quality
  - Audio compression: Dolbry(r) Digital 5.1-Channel
  - Use progressive encoding: Checked
  - Always re-encode entire movie: Checked
  - Target media: BD 25GB
  - Image type: BDMV (AVC)
  - Play sound when finished: Checked
  - Shut down PC when finished: Unchecked



13. Press "OK"
14. Press "Create image" and select a location and press "OK" and start your measurement.
15. Stop your measurement when making the movie is finished. The program will display "Disc image generated successfully" in the white box. This measurement is the encode time.
16. Combine both import and encode measurement times to get the combined total time.
17. Exit the program and delete the created folders.
18. Repeat steps 3-17 four more times and take the median of the combined total run times.