

# Intel® 5100 Memory Controller Hub Chipset for Communications, Embedded, and Storage Applications

Thermal/Mechanical Design Guide

---

*July 2008*

Revision 003US



INFORMATION IN THIS DOCUMENT IS PROVIDED IN CONNECTION WITH INTEL® PRODUCTS. NO LICENSE, EXPRESS OR IMPLIED, BY ESTOPPEL OR OTHERWISE, TO ANY INTELLECTUAL PROPERTY RIGHTS IS GRANTED BY THIS DOCUMENT. EXCEPT AS PROVIDED IN INTEL'S TERMS AND CONDITIONS OF SALE FOR SUCH PRODUCTS, INTEL ASSUMES NO LIABILITY WHATSOEVER, AND INTEL DISCLAIMS ANY EXPRESS OR IMPLIED WARRANTY, RELATING TO SALE AND/OR USE OF INTEL PRODUCTS INCLUDING LIABILITY OR WARRANTIES RELATING TO FITNESS FOR A PARTICULAR PURPOSE, MERCHANTABILITY, OR INFRINGEMENT OF ANY PATENT, COPYRIGHT OR OTHER INTELLECTUAL PROPERTY RIGHT.

UNLESS OTHERWISE AGREED IN WRITING BY INTEL, THE INTEL PRODUCTS ARE NOT DESIGNED NOR INTENDED FOR ANY APPLICATION IN WHICH THE FAILURE OF THE INTEL PRODUCT COULD CREATE A SITUATION WHERE PERSONAL INJURY OR DEATH MAY OCCUR.

Intel may make changes to specifications and product descriptions at any time, without notice. Designers must not rely on the absence or characteristics of any features or instructions marked "reserved" or "undefined." Intel reserves these for future definition and shall have no responsibility whatsoever for conflicts or incompatibilities arising from future changes to them. The information here is subject to change without notice. Do not finalize a design with this information.

The products described in this document may contain design defects or errors known as errata which may cause the product to deviate from published specifications. Current characterized errata are available on request.

Contact your local Intel sales office or your distributor to obtain the latest specifications and before placing your product order.

Copies of documents which have an order number and are referenced in this document, or other Intel literature, may be obtained by calling 1-800-548-4725, or by visiting [Intel's Web Site](#).

Intel processor numbers are not a measure of performance. Processor numbers differentiate features within each processor family, not across different processor families. See [http://www.intel.com/products/processor\\_number](http://www.intel.com/products/processor_number) for details.

BunnyPeople, Celeron, Celeron Inside, Centrino, Centrino Inside, Centrino logo, Core Inside, FlashFile, i960, InstantIP, Intel, Intel logo, Intel386, Intel486, IntelDX2, IntelDX4, IntelSX2, Intel Atom, Intel Atom Inside, Intel Core, Intel Inside, Intel Inside logo, Intel. Leap ahead., Intel. Leap ahead. logo, Intel NetBurst, Intel NetMerge, Intel NetStructure, Intel SingleDriver, Intel SpeedStep, Intel StrataFlash, Intel Viiv, Intel vPro, Intel XScale, Itanium, Itanium Inside, MCS, MMX, Oplus, OverDrive, PDCharm, Pentium, Pentium Inside, skool, Sound Mark, The Journey Inside, Viiv Inside, vPro Inside, VTune, Xeon, and Xeon Inside are trademarks of Intel Corporation in the U.S. and other countries.

\*Other names and brands may be claimed as the property of others.

Copyright © 2008, Intel Corporation. All rights reserved.



## Contents

---

<b>1.0</b>	<b>Introduction</b>	6
1.1	Design Flow	6
1.2	Definition of Terms	7
1.3	Related Documents	8
1.4	Thermal Simulation	9
<b>2.0</b>	<b>Packaging Technology</b>	9
2.1	Package Mechanical Requirements	11
<b>3.0</b>	<b>Thermal Specifications</b>	12
3.1	Thermal Design Power (TDP)	12
3.2	Case Temperature	12
<b>4.0</b>	<b>Thermal Solution Requirements</b>	12
4.1	Characterizing the Thermal Solution Requirement	12
<b>5.0</b>	<b>Thermal Metrology</b>	15
5.1	MCH Case Measurement	15
5.1.1	Supporting Test Equipment	15
5.1.2	Thermal Calibration and Controls	16
5.1.3	IHS Groove	16
5.1.4	Thermocouple Conditioning and Preparation	18
5.1.5	Thermocouple Attachment to IHS	18
5.1.6	Curing Process	22
5.1.7	Thermocouple Wire Management	23
5.2	Power Simulation Software	24
<b>6.0</b>	<b>Reference Thermal Solution</b>	24
6.1	AdvancedTCA* Reference Heatsink	25
6.1.1	Thermal Performance	25
6.1.2	Mechanical Design Envelope	25
6.1.3	Board-level Components Keepout Dimensions	26
6.1.4	Torsional Clip Heatsink Thermal Solution Assembly	26
6.1.5	Heatsink Orientation	27
6.1.6	Extruded Heatsink Profiles	27
6.1.7	Mechanical Interface Material	27
6.1.8	Thermal Interface Material	27
6.1.8.1	Effect of Pressure on TIM Performance	28
6.1.9	Heatsink Clip	28
6.1.10	Clip Retention Anchors	28
6.1.11	Reliability Guidelines	28
6.2	CompactPCI* Reference Heatsink	29
6.2.1	Component Overview	29
6.2.2	Thermal Solution Performance Characteristics	30
<b>7.0</b>	<b>Reliability Guidelines</b>	30
<b>A</b>	<b>Mechanical Drawings</b>	31
<b>B</b>	<b>Thermal Solution Component Suppliers</b>	40

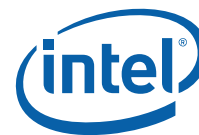


## Figures

1	Thermal Design Process .....	7
2	MCH Package Dimensions (Top View) .....	10
3	MCH Package Dimensions (Side View) .....	10
4	MCH Package Dimensions (Bottom View) .....	11
5	Processor Thermal Characterization Parameter Relationships .....	13
6	IHS Groove Dimensions .....	17
7	Orientation of Thermocouple Groove Relative to Package Pin .....	18
8	Bending Tip of Thermocouple .....	18
9	Securing Thermocouple Wires with Kapton Tape Prior to Attach .....	19
10	Thermocouple Bead Placement .....	20
11	Positioning Bead on Groove .....	20
12	Using 3D Micromanipulator to Secure Bead Location .....	21
13	Measuring Resistance between Thermocouple and IHS .....	21
14	Applying Adhesive on Thermocouple Bead .....	22
15	Thermocouple Wire Management in Groove .....	23
16	Removing Excess Adhesive from IHS .....	23
17	Filling Groove with Adhesive .....	24
18	Torsional Clip Heatsink Measured Thermal Performance versus Approach Velocity .....	25
19	AdvancedTCA* Torsional Clip Heatsink Volumetric Envelope for MCH Heatsink .....	26
20	Torsional Clip Heatsink Assembly .....	27
21	Isometric View of the CompactPCI* Reference Heatsink .....	29
22	CompactPCI* Reference Heatsink Thermal Performance .....	30
23	AdvancedTCA* Heatsink Assembly Drawing .....	32
24	AdvancedTCA* Heatsink Drawing .....	33
25	AdvancedTCA* Component Keepout Zone .....	34
26	CompactPCI* Heatsink Assembly Drawing .....	35
27	CompactPCI* Heatsink Drawing .....	36
28	CompactPCI* Component Keepout Zone .....	37
29	Torsional Clip Heatsink Clip Drawing .....	38
30	TIM2 Drawing .....	39

## Tables

1	Definition of Terms .....	7
2	Related Documents .....	8
3	Intel® 5100 Memory Controller Hub Chipset Thermal Specifications .....	12
4	Required Heatsink Thermal Performance ( $\Psi_{CA}$ ) .....	15
5	Thermocouple Attach Support Equipment .....	16
6	Honeywell* PCM45F TIM Performance as Function of Attach Pressure .....	28
7	Reliability Guidelines .....	29
8	Reliability Requirements .....	30
9	Mechanical Drawing List .....	31
10	MCH Torsional Clip Heatsink Thermal Solution .....	40



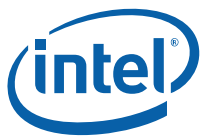
## Revision History

Date	Revision	Description
July 2008	003	Added the CompactPCI* reference solution Added <a href="#">Figure 26</a> , <a href="#">Figure 27</a> , and <a href="#">Figure 28</a> Updated the supplier information
February 2008	002	Updated the TDP <sub>Max config</sub> value to 25.7 W in <a href="#">Table 3</a>
November 2007	001	Initial release

## Revision Number Descriptions

Revision	Associated Life Cycle Milestone	Release Information
0.0	POP L3 Closure	Initial Documentation - Typically Internal Only
0.1–0.4	When Needed	Project Dependent - Typically Internal Only
0.5	Design Win Phase	First, Required Customer Release
0.6–0.7	When Needed	Project Dependent
0.7	Simulations Complete	Second, Recommended Customer Release
0.8–0.9	When Needed	Project Dependent
1.0	First Silicon Samples	Required Customer Release
1.1–1.4	When Needed	Project Dependent (Recommended)
1.5	Qualification Silicon Samples	Project Dependent
1.6–1.9	When Needed	Project Dependent
NDA - 2.0 Public - XXXXXX-001	First SKU Launch	Required Customer Release - Product Launch
2.1 and up	When Needed	Project Dependent

**Note:** Rows highlighted in gray are required revisions.



## 1.0 Introduction

As the complexity of computer systems increases, so do the power dissipation requirements. Care must be taken to ensure that the additional power is properly dissipated. Typical methods to improve heat dissipation include selective use of ducting, and/or passive heatsinks.

The goals of this document are to:

- Outline the thermal and mechanical operating limits and specifications for the Intel® 5100 Memory Controller Hub Chipset (Intel® 5100 MCH Chipset)
- Describe reference thermal solutions that meet the specification of the Intel® 5100 MCH Chipset

Properly designed thermal solutions provide adequate cooling to maintain the Intel® 5100 MCH Chipset die temperatures at or below thermal specifications. This is accomplished by providing a low local-ambient temperature, ensuring adequate local airflow, and minimizing the die to local-ambient thermal resistance. By maintaining the Intel® 5100 MCH Chipset die temperature at or below the specified limits, a system designer can ensure the proper functionality, performance, and reliability of the chipset. Operation outside the functional limits can degrade system performance and may cause permanent changes in the operating characteristics of the component.

The simplest and most cost effective method to improve the inherent system cooling characteristics is through careful chassis design and placement of fans, vents, and ducts. When additional cooling is required, component thermal solutions may be implemented in conjunction with system thermal solutions. The size of the fan or heatsink can be varied to balance size and space constraints with acoustic noise.

This document addresses thermal design and specifications for the Intel® 5100 MCH Chipset components only. For thermal design information on other chipset components, refer to the respective component datasheet. For the ICH9R, refer to the *Intel® I/O Controller Hub 9 (ICH9) Family Thermal and Mechanical Design Guidelines*.

**Note:** Unless otherwise specified, the term “MCH” refers to the Intel® 5100 MCH Chipset.

## 1.1 Design Flow

To develop a reliable, cost-effective thermal solution, several tools have been provided to the system designer. [Figure 1](#) illustrates the design process implicit to this document and the tools appropriate for each step.

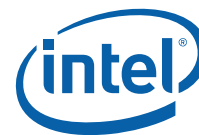
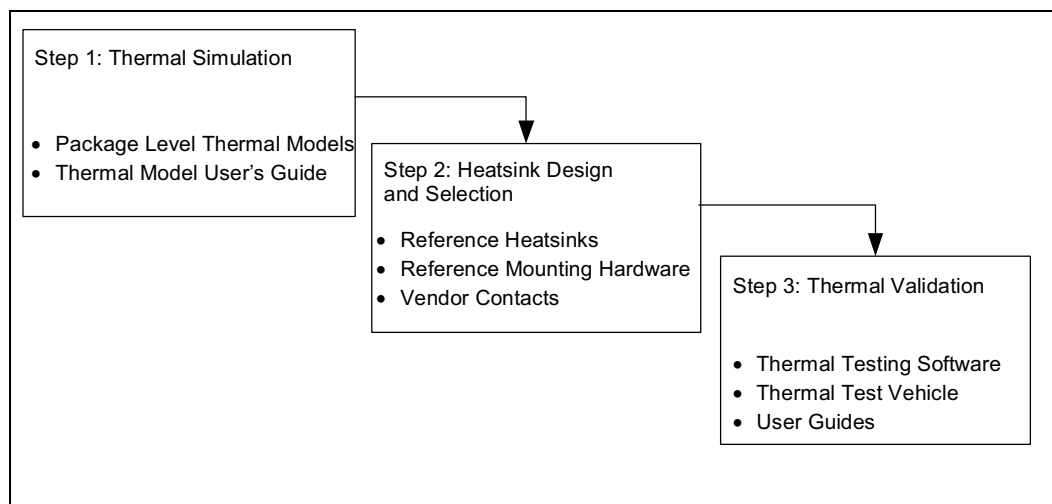


Figure 1. Thermal Design Process



## 1.2 Definition of Terms

Table 1. Definition of Terms

Term	Definition
FC-BGA	Flip Chip Ball Grid Array. A package type defined by a plastic substrate where a die is mounted using an underfill C4 (Controlled Collapse Chip Connection) attach style. The primary electrical interface is an array of solder balls attached to the substrate opposite the die. <b>Note:</b> The device arrives at the customer with solder balls attached.
BLT	Bond line thickness. Final settled thickness of the thermal interface material after installation of heatsink.
ICH9	I/O Controller Hub 9
IHS	Integrated Heat Spreader
MCH	Memory controller hub. The chipset component that contains the processor interface, the memory interface, the PCI Express* interface and the ESI interface.
$T_{case\_max}$	Maximum allowed component temperature. This temperature is measured at the geometric center of the top of the package IHS.
$T_{case\_min}$	Minimum allowed component temperature. This temperature is measured at the geometric center of the top of the package IHS.
TDP	Thermal design power. Thermal solutions should be designed to dissipate this target power level. TDP is not the maximum power that the chipset can dissipate.
TIM	Thermal Interface Material
$\Psi_{CA}$	Case-to-ambient thermal characterization parameter. A measure of the thermal solution thermal performance including TIM using the thermal design power. Defined as $(T_{case} - T_{LA}) / TDP$
$\Psi_{CS}$	Case-to-sink thermal characterization parameter. A measure of the TIM thermal performance using the thermal design power. Defined as $(T_{case} - T_{LA}) / TDP$
$\Psi_{SA}$	Sink-to-ambient thermal characterization parameter. A measure of heatsink thermal performance using the thermal design power. Defined as $(T_{case} - T_{LA}) / TDP$



### 1.3 Related Documents

Intel® Electronic Design Kits (EDKs) provide online, real-time collateral updates. The following links take you to the EDK server and require you to log into Intel® Business Link (IBL).

- [Quad-Core and Dual-Core Intel® Xeon® Processor 5000 Sequence with Intel® 5100 Memory Controller Hub Chipset for Communications, Embedded, and Storage Applications](#)
- [Intel® Core™2 Duo Processors T9400 and SL9400 and Intel® 5100 Memory Controller Hub Chipset for Communications and Embedded Applications](#)

The reader of this specification should also be familiar with material and concepts presented in the documents listed in [Table 2](#).

**Table 2. Related Documents (Sheet 1 of 2)**

Document	Document Number/URL
BGA/OLGA Assembly Development Guide	Note 1
Dual-Core Intel® Xeon® Processor 5100 Series Datasheet	<a href="http://www.intel.com/">http://www.intel.com/</a> (313355)
Dual-Core Intel® Xeon® Processor 5100 Series Specification Update	<a href="http://www.intel.com/">http://www.intel.com/</a> (313356)
Dual-Core Intel® Xeon® Processor 5100 Series Thermal/Mechanical Design Guidelines	<a href="http://www.intel.com/">http://www.intel.com/</a> (313357)
Dual-Core Intel® Xeon® Processor 5200 Series Datasheet	<a href="http://www.intel.com/">http://www.intel.com/</a> (318590)
Dual-Core Intel® Xeon® Processor 5200 Series Specification Update	<a href="http://www.intel.com/">http://www.intel.com/</a> (318586)
Dual-Core Intel® Xeon® Processor 5200 Series Thermal/Mechanical Design Guidelines	<a href="http://www.intel.com/">http://www.intel.com/</a> (318675)
Dual-Core Intel® Xeon® Processor LV 5138 in Embedded Applications Thermal/Mechanical Design Guidelines	<a href="http://www.intel.com/">http://www.intel.com/</a> (315225)
Intel® 5000 Series Chipset Memory Controller Hub (MCH) Thermal/Mechanical Design Guide	<a href="http://www.intel.com/">http://www.intel.com/</a> (313067)
Intel® 5100 Memory Controller Hub Chipset (embedded) – External Design Specification (EDS) Addendum	Note 1
Intel® 5100 Memory Controller Hub Chipset (embedded) – Maximum Power Application	Note 1
Intel® 5100 Memory Controller Hub Chipset Datasheet	<a href="http://www.intel.com/">http://www.intel.com/</a> (318378)
Intel® 5100 Memory Controller Hub Chipset Specification Update	<a href="http://www.intel.com/">http://www.intel.com/</a> (318385)
Intel® Core™2 Duo Processor, Intel® Core™2 Solo Processor and Intel® Core™2 Extreme Processor on 45-nm Process Datasheet	<a href="http://www.intel.com/">http://www.intel.com/</a> (320120)
Intel® Core™2 Duo Processor, Intel® Core™2 Solo Processor and Intel® Core™2 Extreme Processor on 45-nm Process Specification Update	<a href="http://www.intel.com/">http://www.intel.com/</a> (320121)
Intel® Core™2 Duo Processors on 45-nm process for Embedded Applications Thermal Design Guide	<a href="http://www.intel.com/">http://www.intel.com/</a> (320028)
Intel® Core™2 Duo Processors T9400 and SL9400 and Intel® 5100 Memory Controller Hub Chipset for Communications and Embedded Applications – Platform Design Guide	Note 1
Intel® I/O Controller Hub 9 (ICH9) Family Datasheet	<a href="http://www.intel.com/">http://www.intel.com/</a> (316972)
Intel® I/O Controller Hub 9 (ICH9) Family Specification Update	<a href="http://www.intel.com/">http://www.intel.com/</a> (316973)

**Notes:**

1. Contact your Intel sales representative. Some documents may not be available at this time.



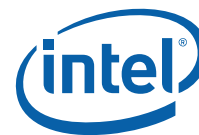


Table 2. Related Documents (Sheet 2 of 2)

Document	Document Number/URL
Intel® I/O Controller Hub 9 (ICH9) Family Thermal and Mechanical Design Guidelines	<a href="http://www.intel.com/">http://www.intel.com/</a> (316974)
Quad-Core and Dual-Core Intel® Xeon® Processor 5000 Sequence with Intel® 5100 Memory Controller Hub Chipset for Communications, Embedded, and Storage Applications – Platform Design Guide	Note 1
Quad-Core Intel® Xeon® Processor 5300 Series Datasheet	<a href="http://www.intel.com/">http://www.intel.com/</a> (315569)
Quad-Core Intel® Xeon® Processor 5300 Series Specification Update	<a href="http://www.intel.com/">http://www.intel.com/</a> (315338)
Quad-Core Intel® Xeon® Processor 5300 Series Thermal/Mechanical Design Guidelines	<a href="http://www.intel.com/">http://www.intel.com/</a> (315794)
Quad-Core Intel® Xeon® Processor 5400 Series Datasheet	<a href="http://www.intel.com/">http://www.intel.com/</a> (318589)
Quad-Core Intel® Xeon® Processor 5400 Series Specification Update	<a href="http://www.intel.com/">http://www.intel.com/</a> (318585)
Quad-Core Intel® Xeon® Processor 5400 Series Thermal/Mechanical Design Guidelines	<a href="http://www.intel.com/">http://www.intel.com/</a> (318611)
Quad-Core Intel® Xeon® Processor L5318 in Embedded Applications Thermal and Mechanical Design Guidelines	<a href="http://www.intel.com/">http://www.intel.com/</a> (318474)
Various system thermal design suggestions	<a href="http://www.formfactors.org">http://www.formfactors.org</a>

**Notes:**

1. Contact your Intel sales representative. Some documents may not be available at this time.

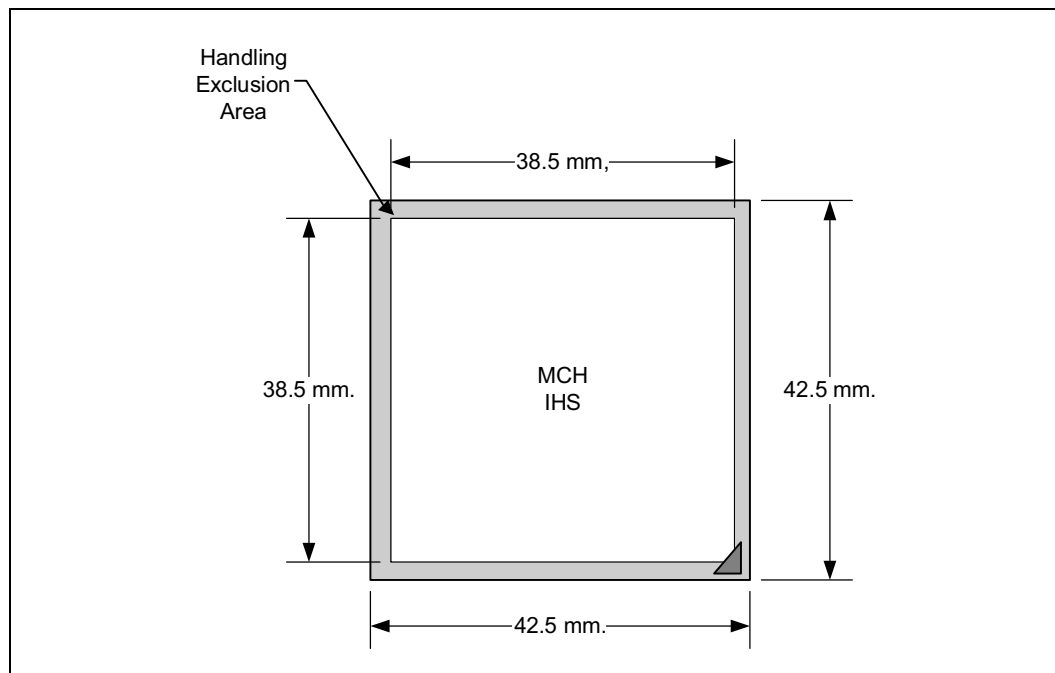
## 1.4 Thermal Simulation

Intel provides thermal simulation models of the Intel® 5100 MCH Chipset and associated user's guides to aid system designers in simulating, analyzing, and optimizing their thermal solutions in an integrated, system-level environment. The models are for use with the commercially available Computational Fluid Dynamics (CFD)-based thermal analysis tools Flomerics\* FLOTHERM\* (version 5.1 or higher) and Fluent\* Icepak\* (version 4.3.10 or higher). Contact your Intel field sales representative to order the thermal models and user's guides.

## 2.0 Packaging Technology

Intel® 5100 MCH Chipset-based platforms consist of two individual components: the Intel® 5100 MCH Chipset and the ICH9R. The Intel® 5100 MCH Chipset uses a 42.5 mm, 10-layer flip chip ball grid array (FC-BGA) package (see [Figure 2](#), [Figure 3](#), and [Figure 4](#)). For information on the ICH9R package, refer to the *Intel® I/O Controller Hub 9 (ICH9) Family Thermal and Mechanical Design Guidelines*.

**Figure 2. MCH Package Dimensions (Top View)**



**Figure 3. MCH Package Dimensions (Side View)**

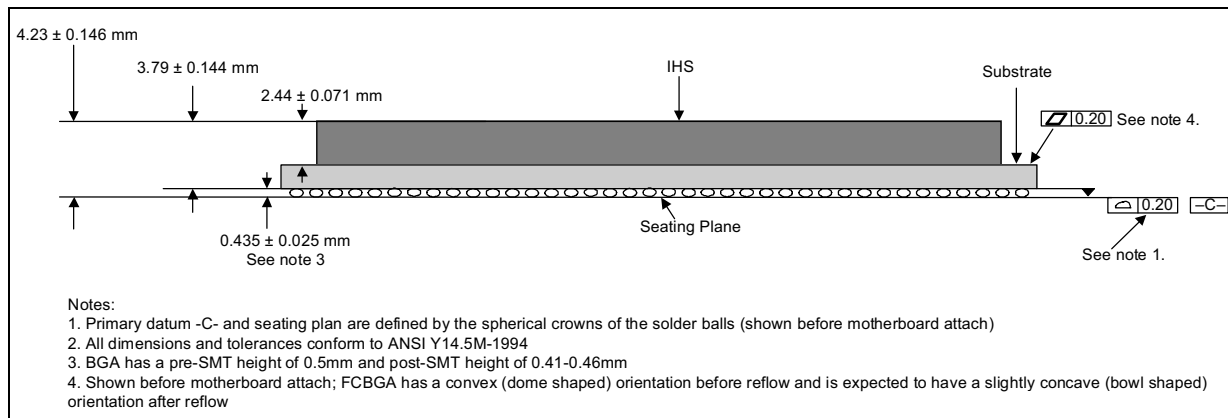
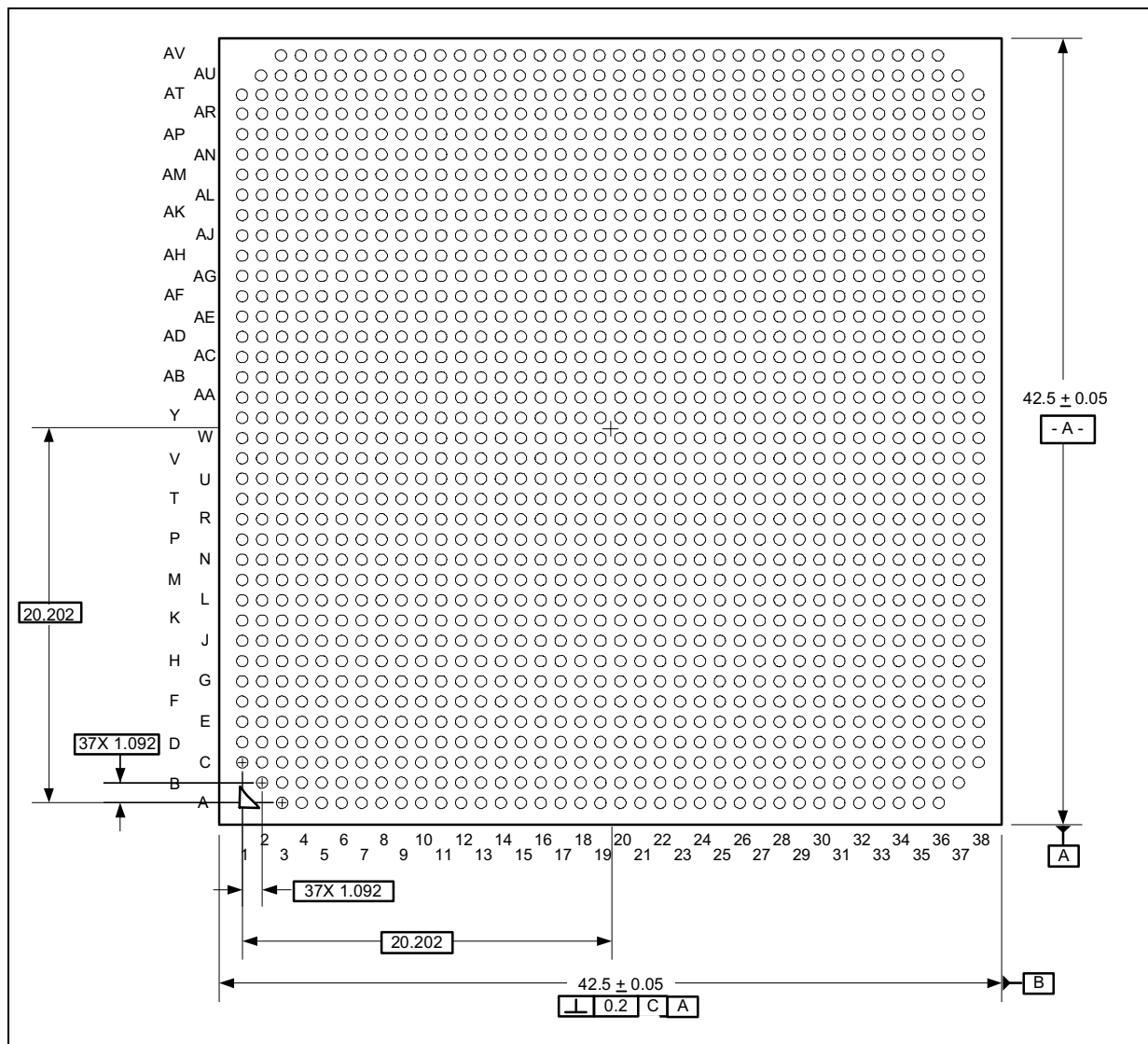


Figure 4. MCH Package Dimensions (Bottom View)

**Notes:**

1. All dimensions are in millimeters.
2. All dimensions and tolerances conform to ANSI Y14.5M-1994.

## 2.1 Package Mechanical Requirements

The Intel® 5100 MCH Chipset package has an integrated heat spreader (IHS) that is capable of sustaining a maximum static normal load of 15 lbf. These mechanical load limits must not be exceeded during heatsink installation, mechanical stress testing, standard shipping conditions and/or any other use condition.

**Note:** The heatsink attach solutions must not include continuous stress to the chipset package with the exception of a uniform load to maintain the heatsink-to-package thermal interface.



**Note:** These specifications apply to uniform compressive loading in a direction perpendicular to the IHS top surface.

**Note:** These specifications are based on limited testing for design characterization. Loading limits are for the package only.

## 3.0 Thermal Specifications

### 3.1 Thermal Design Power (TDP)

Analysis indicates that real applications are unlikely to cause the MCH component to consume maximum power dissipation for sustained time periods. Therefore, in order to arrive at a more realistic power level for thermal design purposes, Intel characterizes power consumption based on known platform benchmark applications. The resulting power consumption is referred to as the Thermal Design Power (TDP). TDP is the target power level to which the thermal solutions should be designed. TDP is not the maximum power that the chipset can dissipate.

FC-BGA packages have a poor heat transfer capability into the board and have a minimal thermal capability without a thermal solution. Intel recommends that system designers plan for a heatsink when using the Intel® 5100 MCH Chipset.

### 3.2 Case Temperature

To ensure proper operation and reliability of the Intel® 5100 MCH Chipset, the case temperatures must be at or between the maximum/minimum operating temperature ranges as specified in [Table 3](#). System and/or component level thermal solutions are required to maintain these temperature specifications. Refer to [Section 5.0, "Thermal Metrology"](#) on page 15 for guidelines on accurately measuring package case temperatures.

**Table 3. Intel® 5100 Memory Controller Hub Chipset Thermal Specifications**

Parameter	Value	Notes
T <sub>case_max</sub>	105 °C	
T <sub>case_min</sub>	5 °C	
TDP <sub>Max config</sub>	25.7 W	DP FSB 1333, 2 channel DDR2 667, 3 x8 PCI Express*
TDP <sub>Typical ATCA config</sub>	23.0 W	DP FSB 1067, 2 channel DDR2 533, 3 x8 PCI Express*
TDP <sub>Typical UP config</sub>	19.5 W	UP FSB 1067, 1 channel DDR2 533, 1 x8 PCI Express*

## 4.0 Thermal Solution Requirements

### 4.1 Characterizing the Thermal Solution Requirement

The idea of a "thermal characterization parameter"  $\Psi$  (the Greek letter Psi) is a convenient way to characterize the performance needed for the thermal solution and to compare thermal solutions in identical situations (in other words, heating source, local ambient conditions, and so forth). The thermal characterization parameter is calculated using total package power; whereas, actual thermal resistance,  $\theta$  (theta), is calculated using actual power dissipated between two points. Measuring actual power dissipated into the heatsink is difficult, because some of the power is dissipated through a heat transfer into the package and board.

The case-to-local ambient thermal characterization parameter ( $\Psi_{CA}$ ) is used as a measure of the thermal performance of the overall thermal solution. It is defined by Equation 1 and is measured in units of °C/W.

**Equation 1. Case-to-local Ambient Thermal Characterization Parameter ( $\Psi_{CA}$ )**

$$\Psi_{CA} = \frac{T_{CASE} - T_{LA}}{TDP}$$

The case-to-local ambient thermal characterization parameter,  $\Psi_{CA}$ , is comprised of  $\Psi_{CS}$ , the thermal interface material (TIM) thermal characterization parameter, and of  $\Psi_{SA}$ , the sink-to-local ambient thermal characterization parameter.

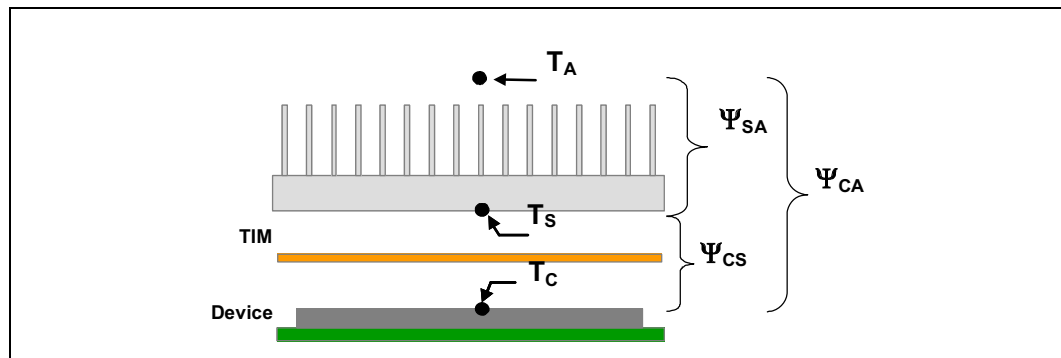
**Equation 2. Case-to-local Ambient Thermal Characterization Parameter ( $\Psi_{CA}$ )**

$$\Psi_{CA} = \Psi_{CS} + \Psi_{SA}$$

$\Psi_{CS}$  is strongly dependent on the thermal conductivity and thickness of the TIM between the heatsink and device package.

$\Psi_{SA}$  is a measure of the thermal characterization parameter from the bottom of the heatsink to the local ambient air.  $\Psi_{SA}$  is dependent on the heatsink material, thermal conductivity, and geometry. It is also strongly dependent on the air velocity through the fins of the heatsink. Figure 5 illustrates the combination of the different thermal characterization parameters.

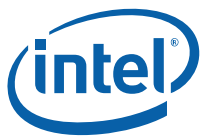
**Figure 5. Processor Thermal Characterization Parameter Relationships**



**Example 1. Calculating the Required Thermal Performance**

The cooling performance,  $\Psi_{CA}$ , is defined using the thermal characterization parameter previously described. The process to determine the required thermal performance to cool the device includes the following.

1. Define a target component temperature  $T_{CASE}$  and corresponding TDP.



2. Define a target local ambient temperature,  $T_{LA}$ .
3. Use [Equation 1](#) and [Equation 2](#) to determine the required thermal performance needed to cool the device.

The following provides an example of how you might determine the appropriate performance targets.

Assume:

- TDP = 25.0 W and  $T_{CASE} = 105\text{ }^{\circ}\text{C}$
- Local processor ambient temperature,  $T_{LA} = 60\text{ }^{\circ}\text{C}$

Then the following could be calculated using [Equation 1](#) for the given chipset configuration.

$$\Psi_{CA} = \frac{T_{CASE} - T_{LA}}{TDP} = \frac{105 - 60}{25} = 1.8^{\circ}\text{C/W}$$

To determine the required heatsink performance, a heatsink solution provider would need to determine  $\Psi_{CS}$  performance for the selected TIM and mechanical load configuration. If the heatsink solution were designed to work with a TIM material performing at  $\Psi_{CS} \leq 0.20\text{ }^{\circ}\text{C/W}$ , solving from [Equation 2](#), the performance needed from the heatsink is as follows.

$$\Psi_{SA} = \Psi_{CA} - \Psi_{CS} = 1.8 - 0.20 = 1.6^{\circ}\text{C/W}$$

If the local ambient temperature is relaxed to  $45\text{ }^{\circ}\text{C}$ , the same calculation can be carried out to determine the new case-to-ambient thermal resistance.

$$\Psi_{CA} = \frac{T_{CASE} - T_{LA}}{TDP} = \frac{105 - 45}{25} = 2.4^{\circ}\frac{\text{C}}{\text{W}}$$

It is evident from the above calculations that a reduction in the local ambient temperature has a significant effect on the case-to-ambient thermal resistance requirement. This effect can contribute to a more reasonable thermal solution including reduced cost, heatsink size, heatsink weight, and a lower system airflow rate.

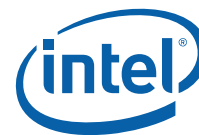


Table 4 summarizes the thermal budget required to adequately cool the Intel® 5100 MCH Chipset in one configuration using a TDP of 25 W. Further calculations would need to be performed for different TDPs. Because the results are based on air data at sea level, a correction factor would be required to estimate the thermal performance at other altitudes.

**Table 4. Required Heatsink Thermal Performance ( $\Psi_{CA}$ )**

Device	$\Psi_{CA}$ ( $^{\circ}\text{C}/\text{W}$ ) at $T_{LA} = 45^{\circ}\text{C}$	$\Psi_{CA}$ ( $^{\circ}\text{C}/\text{W}$ ) at $T_{LA} = 60^{\circ}\text{C}$
Intel® 5100 MCH Chipset @ 25 W	2.4	1.8

## 5.0 Thermal Metrology

The system designer must make temperature measurements to accurately determine the thermal performance of the system. Intel has established guidelines for proper techniques to measure the MCH case temperatures. Section 5.1 provides guidelines on how to accurately measure the MCH case temperatures. Section 5.2 contains information on running an application program that will emulate anticipated maximum thermal design power (Figure 6).

### 5.1 MCH Case Measurement

The Intel® 5100 MCH Chipset cooling performance is determined by measuring the case temperature using a thermocouple. For case temperature measurements, the attached method outlined in this section is recommended for mounting a thermocouple.

Special care is required when measuring the case temperature ( $T_C$ ) to ensure an accurate temperature measurement. Thermocouples are often used to measure  $T_C$ . When measuring the temperature of a surface that is at a different temperature from the surrounding local ambient air, errors may be introduced in the measurements. The measurement errors can be caused by poor thermal contact between the thermocouple junction and the surface of the integrated heat spreader, heat loss by radiation, convection, by conduction through thermocouple leads, or by contact between the thermocouple cement and the heatsink base. To minimize these measurement errors, the approach outlined in the next section is recommended.

**Note:** The thermocouple attach example shown below is on a different package, but the method and groove dimensions are the same. The thermocouple bead needs to be centered on the IHS.

#### 5.1.1 Supporting Test Equipment

To apply the reference thermocouple attach procedure, it is recommended that you use the equipment (or equivalent) given in Table 5.



Table 5. Thermocouple Attach Support Equipment

Item	Description	Part Number
Measurement and Output		
Microscope	Olympus* light microscope or equivalent	SZ-40
Digital multi-meter	Digital multi-meter for resistance measurement	Not Available
Test Fixture(s)		
Micromanipulator <sup>1</sup>	Micromanipulator set from YOU Ltd. or equivalent mechanical 3D arm with needle (not included) to maintain T <sub>C</sub> bead location during the attach process	YOU-3
Miscellaneous Hardware		
Locite* 498* Super Bonder* Instant Adhesive Thermal Cycling Resistant	Super glue with thermal characteristics	49850
Adhesive accelerator	Locite 7452 Tak Pak* accelerator for fast glue curing	18490
Kapton tape	For holding thermocouple in place or equivalent	Not Available
Thermocouple	OMEGA*, 36 gauge, "T" type	5SRTC-TT-36-72
Calibration and Control		
ice point* Cell	OMEGA, stable 0 °C temperature source for calibration and offset	TRCIII
hot point* Cell	OMEGA, temperature source to control and understand meter slope gain	CL950-A-110

**Notes:**

1. Three axes set consists of (1 ea. U-31CF), (1 ea. UX-6-6), (1 ea. USM6) and (1 ea. UPN-1). More information is available at <http://www.narishige.co.jp/you/english/products/set/index.htm>.

### 5.1.2 Thermal Calibration and Controls

It is recommended that full and routine calibration of temperature measurement equipment be performed before attempting to perform a temperature case measurement of the Intel® 5100 MCH Chipset. Intel recommends checking the meter probe set against known standards. This should be done at 0 °C (using an ice bath or other stable temperature source) and at an elevated temperature, around 80 °C (using an appropriate temperature source).

Wire gauge and length also should be considered because some less expensive measurement systems are heavily impacted by impedance. There are numerous resources available throughout the industry to assist with implementation of proper controls for thermal measurements.

**Note:** It is recommended to follow company standard procedures and wear safety items like glasses for cutting the IHS and gloves for chemical handling.

**Note:** Ask your Intel field sales representative if you need assistance to groove and/or install a thermocouple according to the reference process.

### 5.1.3 IHS Groove

Cut a groove in the package IHS according to the drawing given in [Figure 6](#).

**Note:** The center of the round at the end of the IHS groove should be at the center of the package.



Figure 6. IHS Groove Dimensions

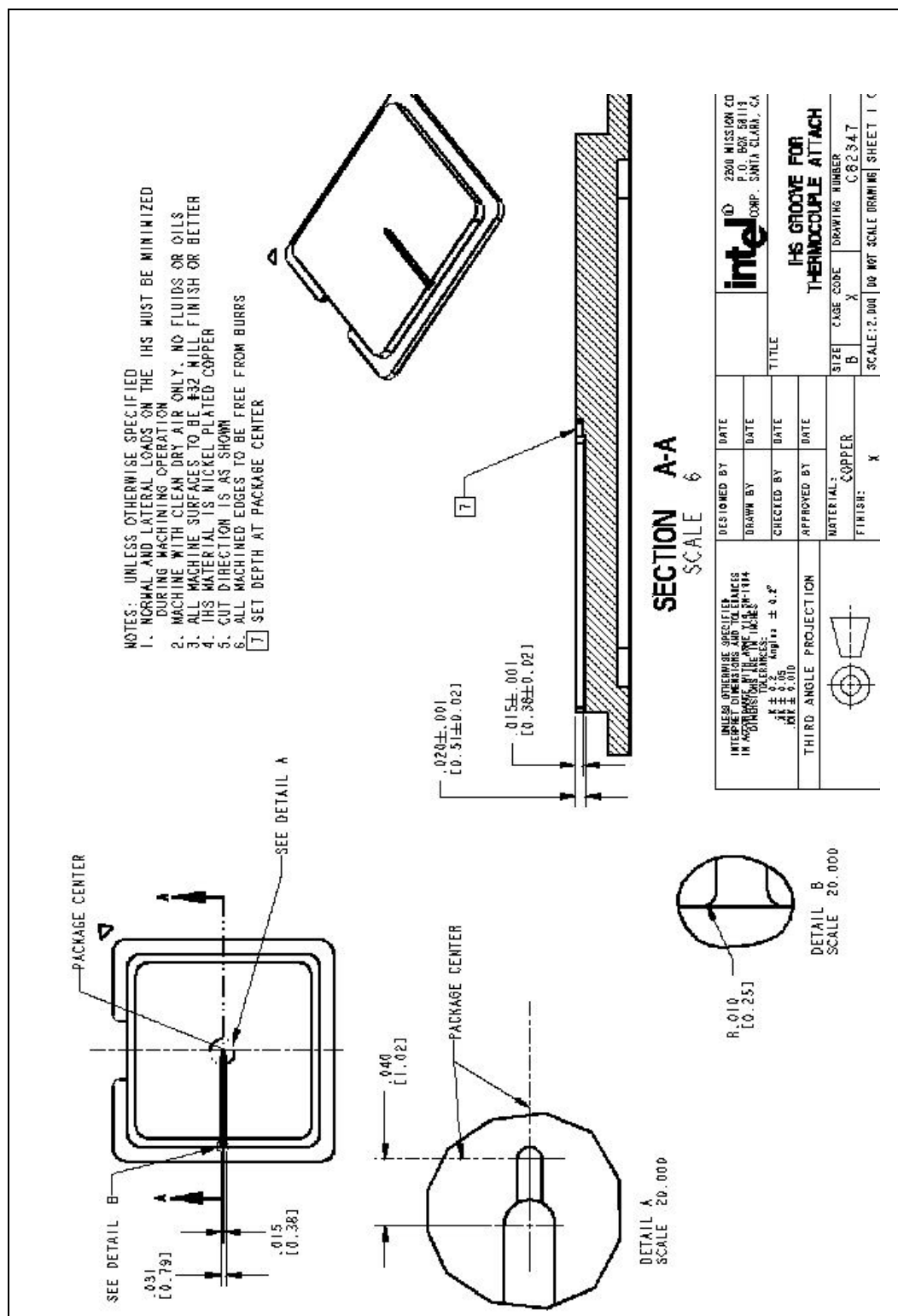
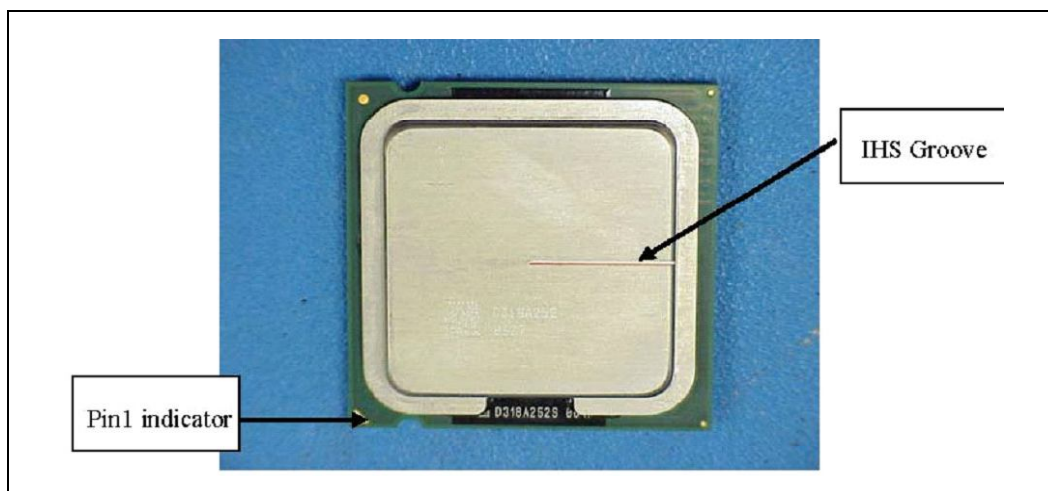


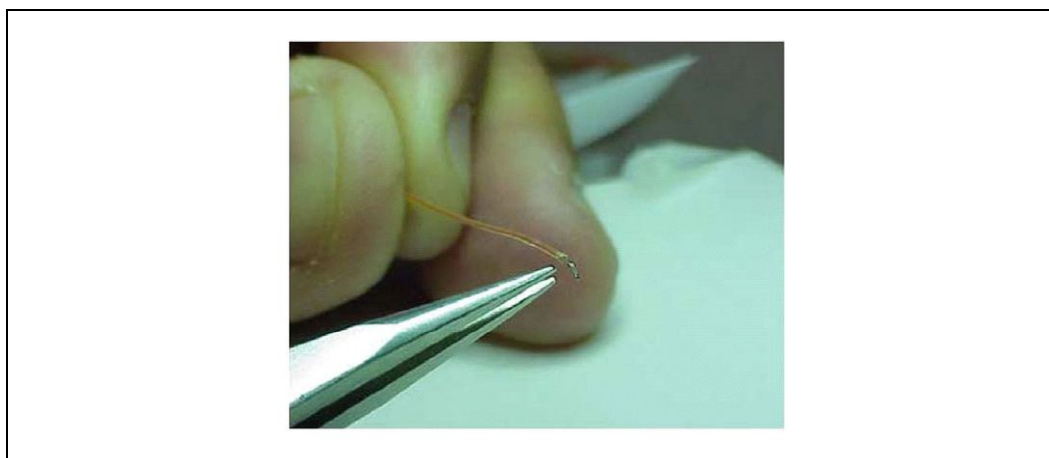
Figure 7. Orientation of Thermocouple Groove Relative to Package Pin



#### 5.1.4 Thermocouple Conditioning and Preparation

1. Use a calibrated thermocouple as specified in Table 5.
2. Measure the thermocouple resistance by holding both wires on one probe and the tip of the thermocouple to the other probe of the DMM (compare to thermocouple resistance specifications).
3. Straighten the wire for about 38 mm (1½") from the bead to place it inside the channel.
4. Bend the tip of the thermocouple to approximately a 45 degree angle by 0.8 mm (0.030") from the tip (Figure 8).

Figure 8. Bending Tip of Thermocouple



#### 5.1.5 Thermocouple Attachment to IHS

**Caution:** To avoid impact on the thermocouple during the SMT process, reflow must be performed before attaching the thermocouple to the grooved MCH IHS.

1. Clean the thermocouple wire groove with isopropyl alcohol (IPA) and a lint-free cloth removing all residue prior to thermocouple attachment.

2. Place the thermocouple wire inside the groove letting the exposed wire and bead extend about 3.2 mm (0.125") past the end of the groove. Secure it with Kapton tape ([Figure 9](#)).
3. Lift the wire at the middle of groove with tweezers and bend the front of the wire to place the thermocouple in the channel ensuring that the tip is in contact with the end of the channel grooved in the IHS ([Figure 10 A and B](#)).
4. Place the MCH under the microscope unit (similar to the one used in [Figure 13](#)) to continue with the process. It is also recommended to use a fixture to help hold the unit in place for the rest of the attach process.
5. Press the wire down about 6 mm (0.125") from the thermocouple bead using the tweezers. Look in the microscope to perform this task. Place a piece of Kapton tape to hold the wire inside the groove ([Figure 12](#)). Refer to [Figure 11](#) for detailed bead placement.
6. Using the micromanipulator, place the needle near the end of groove on top of the thermocouple. Using the X, Y, and Z axes on the arm, place the tip of the needle on top of the thermocouple bead. Press down until the bead is seated at the end of the groove on top of the step (see [Figure 11](#) and [Figure 12](#)).
7. Measure resistance from thermocouple end wires (hold both wires to a DMM probe) to the IHS surface. This should be the same value as measured during the thermocouple conditioning. See [Section 5.1.4](#), step 2., and [Figure 13](#).
8. Place a small amount of Locite® 498® Super Bonder® adhesive in the groove where the bead is installed. Using a fine point device, spread the adhesive in the groove around the needle, the thermocouple bead, and the thermocouple wires already installed in the groove during step 5. Be careful not to move the thermocouple bead during this step ([Figure 14](#)).

**Figure 9. Securing Thermocouple Wires with Kapton Tape Prior to Attach**

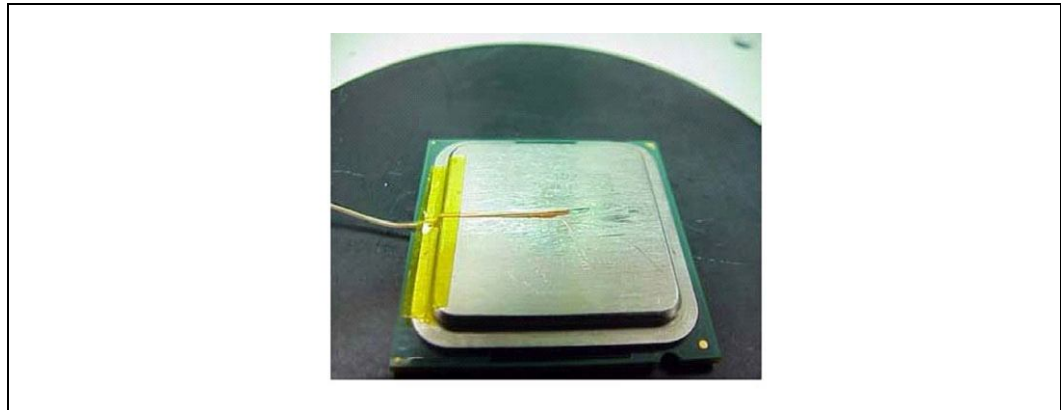


Figure 10. Thermocouple Bead Placement

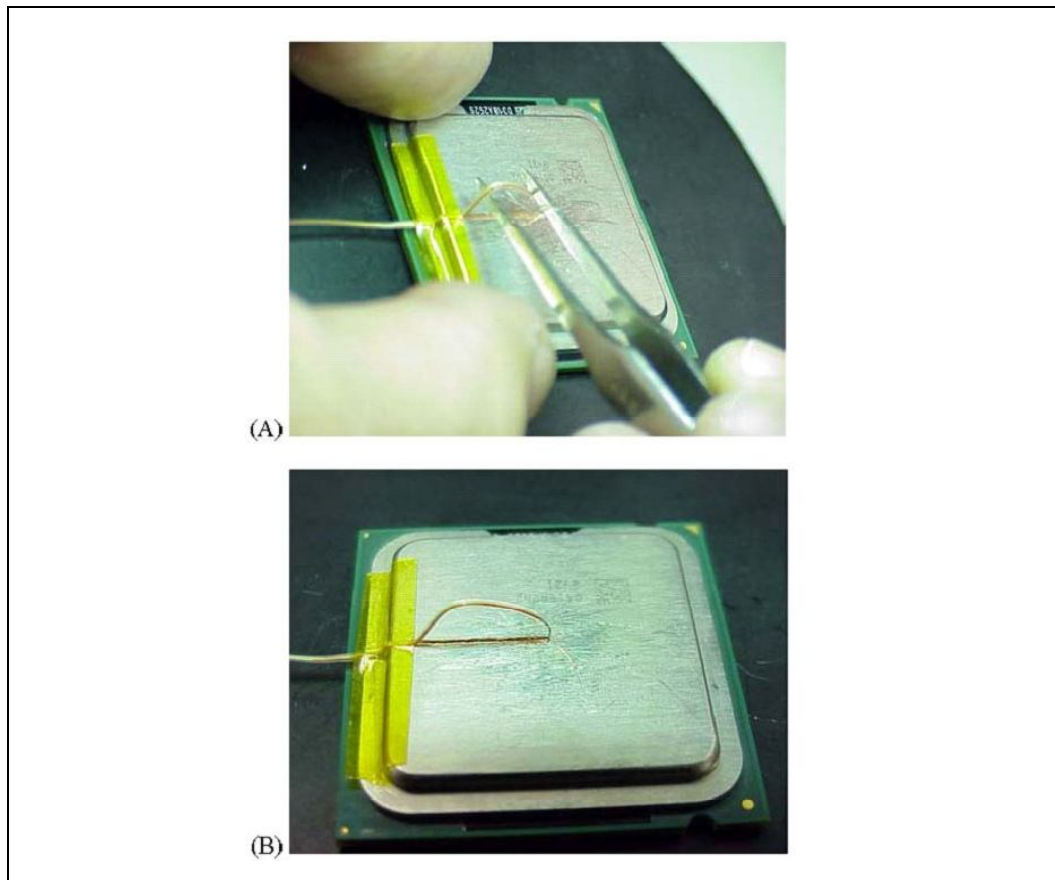


Figure 11. Positioning Bead on Groove

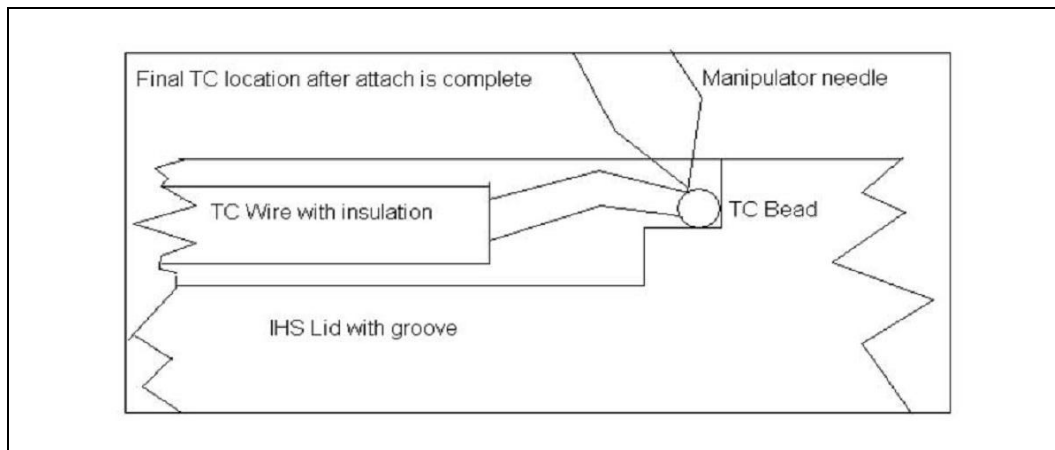


Figure 12. Using 3D Micromanipulator to Secure Bead Location

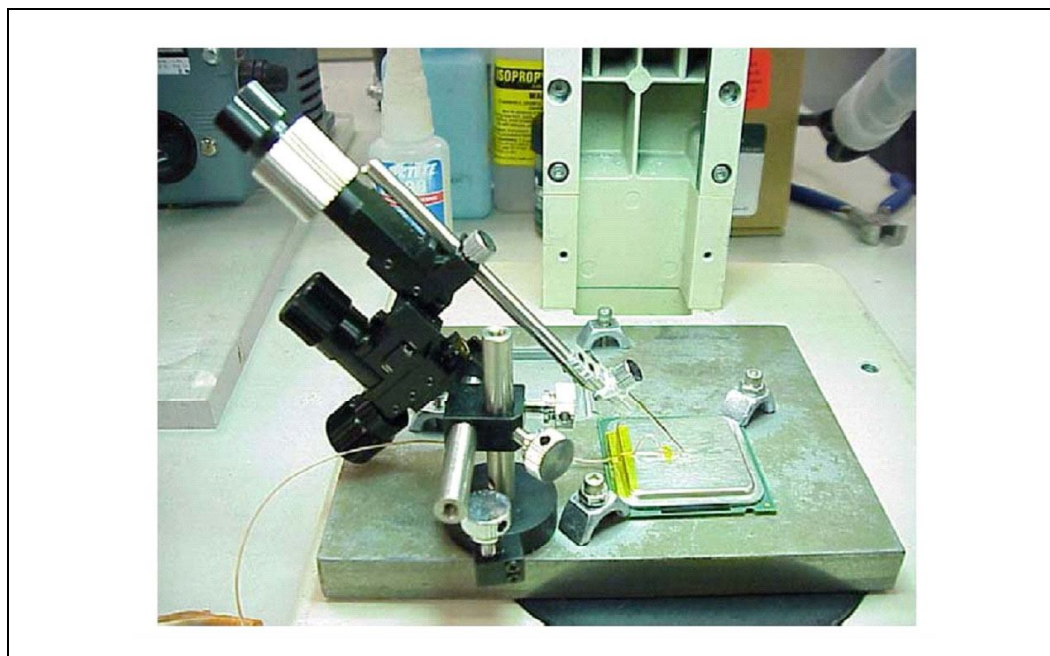


Figure 13. Measuring Resistance between Thermocouple and IHS





Figure 14. Applying Adhesive on Thermocouple Bead



### 5.1.6 Curing Process

1. Let the thermocouple attach sit in the open air for at least half an hour. Using any curing accelerator like the Locite® 7452 Tak Pak® accelerator for this step is not recommended. Rapid contraction of the adhesive during curing may weaken bead attach on the IHS.
2. Reconfirm electrical connectivity with the DMM before removing the micromanipulator. See [Section 5.1.4](#), step 2., and [Figure 13](#).
3. Remove the 3D arm needle by holding down the MCH unit and lifting the arm.
4. Remove the Kapton tape, and straighten the wire in the groove so that it is flat all the way to the end of the groove ([Figure 15](#)).
5. Using a blade, shave excess adhesive above the IHS surface ([Figure 16](#)).

*Note:* Take usual precautions when using open blades.

6. Install new Kapton tape to hold the thermocouple wire down, and fill the rest of the groove with adhesive ([Figure 17](#)). Make sure the wire and insulation is entirely within the groove and below the IHS surface.
7. Curing time for the rest of the adhesive in the groove can be reduced using the Locite® 7452 Tak Pak® accelerator.
8. Repeat step 5. to remove any access adhesive to ensure a flat IHS for proper mechanical contact to the heatsink surface.

### 5.1.7 Thermocouple Wire Management

Figure 15. Thermocouple Wire Management in Groove

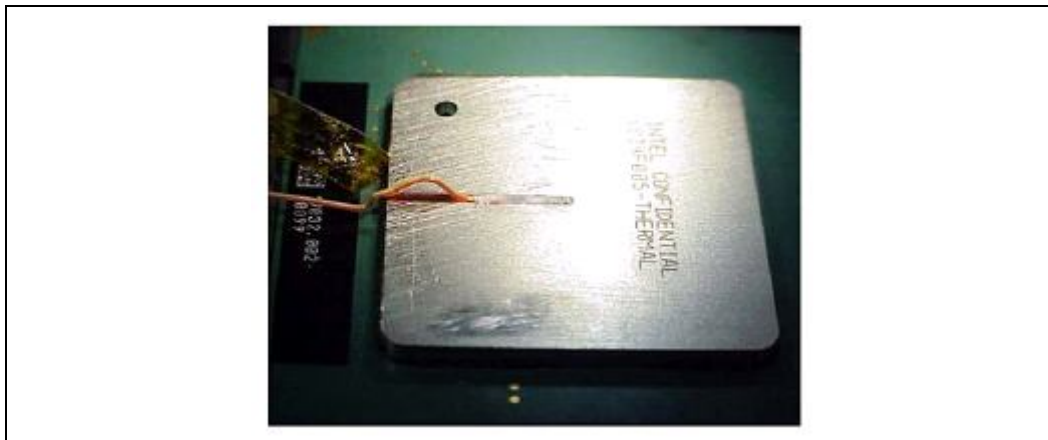
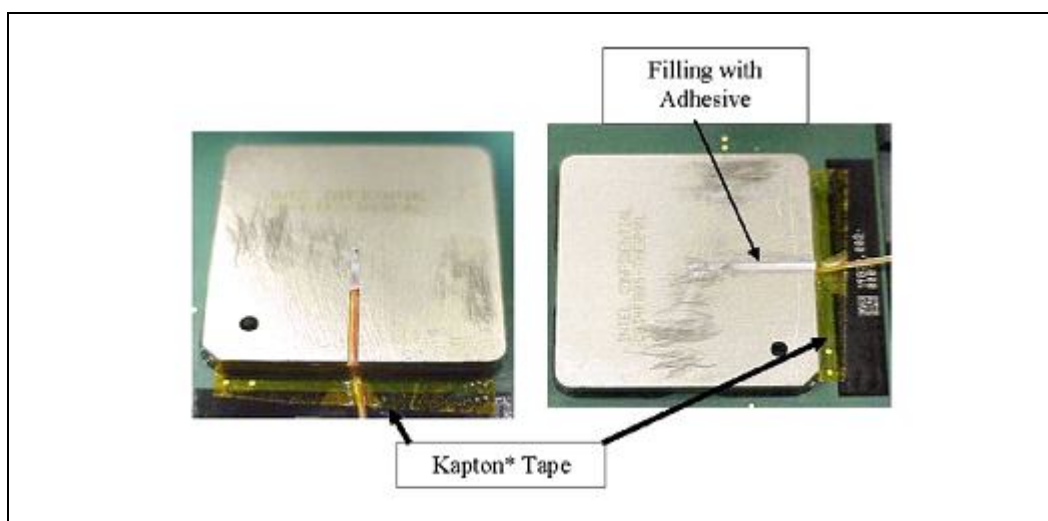


Figure 16. Removing Excess Adhesive from IHS



**Figure 17. Filling Groove with Adhesive**



**Note:** Prior to installing the heatsink, be sure that the thermocouple wires remain below the IHS top surface by running a flat blade on top of the IHS, for example.

## 5.2 Power Simulation Software

Power simulation software now exists for the Intel® 5100 MCH Chipset. The power simulation software is a utility designed to dissipate the thermal design power on a Intel® 5100 MCH Chipset when used in conjunction with the Dual-Core Intel® Xeon® processor 5X00 series. The combination of the above mentioned processor(s) and the higher bandwidth capability of the Intel® 5100 MCH Chipset enables higher levels of system performance. To assess the thermal performance of the MCH chipset thermal solution under “worst-case realistic application” conditions, Intel developed a software utility that operates the chipset at near worst-case thermal power dissipation.

The power simulation software developed should only be used to test thermal solutions at or near the thermal design power. Real world applications may exceed the thermal design power limit for transient time periods. For power supply current requirements under these transient conditions, please refer to each component’s datasheet for the ICC (Max Power Supply Current) specification. Contact your Intel field sales representative to order the power simulation software: *Intel® 5100 Memory Controller Hub Chipset (embedded) – Maximum Power Application*.

## 6.0 Reference Thermal Solution

Intel has developed two reference thermal solutions that meet the cooling needs of the Intel® 5100 MCH Chipset under the embedded operating environments and specifications defined in this document. This chapter describes the overall requirements for the torsional clip heatsink reference thermal solution including critical-to-function dimensions, operating environment, and validation criteria. Other chipset components may or may not need attached thermal solutions depending on your specific system local-ambient operating conditions. For information on the ICH9R, refer to the thermal specification in the *Intel® I/O Controller Hub 9 (ICH9) Family Thermal and Mechanical Design Guidelines*.





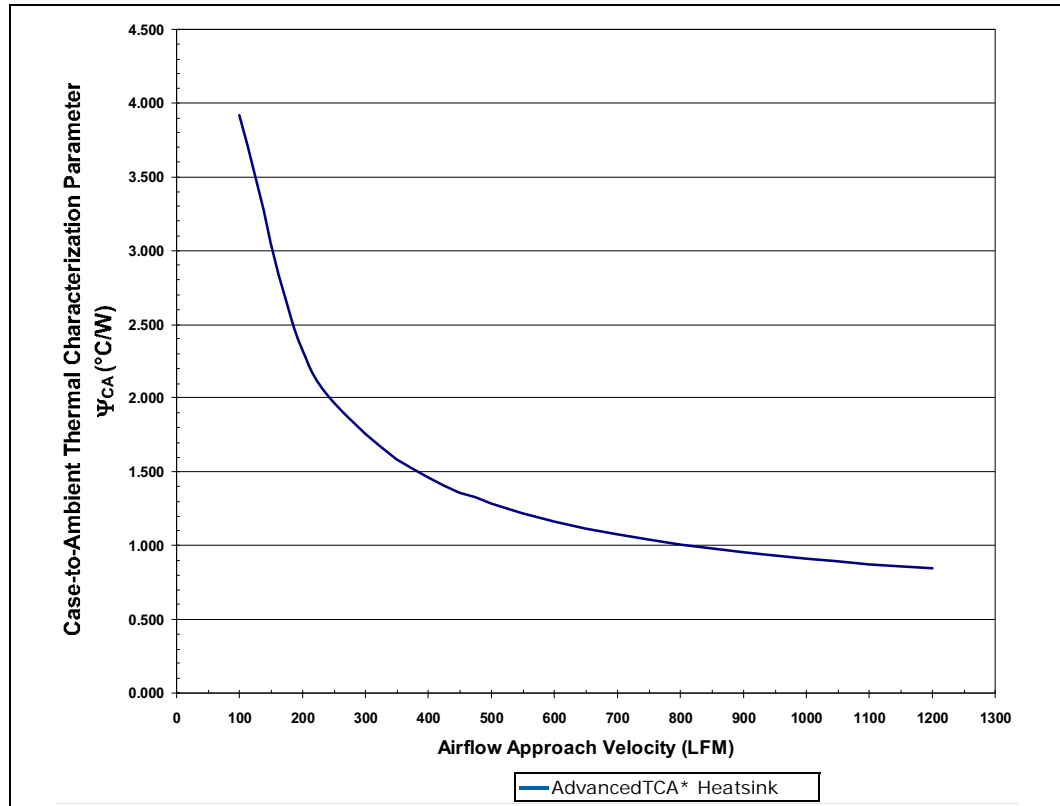
The Intel® 5100 MCH Chipset has a lower TDP than the Intel® 5000 Series Chipset and a similar package size. Due to this, any thermal solutions for the Intel® 5000 Series Chipset should be reusable for the Intel® 5100 MCH Chipset including the Intel reference solutions. The system designer still needs to verify that the entire thermal solution will meet the component temperature specifications and TDP in the intended system.

## 6.1 AdvancedTCA\* Reference Heatsink

### 6.1.1 Thermal Performance

The AdvancedTCA\* reference heatsink should be made from aluminum to achieve the necessary thermal performance. Depending on the boundary conditions, the reference heatsink can meet the thermal performance needed to cool the Intel® 5100 MCH Chipset in the AdvancedTCA\* form factor. The heatsink performance versus airflow velocity is shown in Figure 18. The heatsink may be used in other form factors that can provide the required amount of airflow to meet the components thermal specifications.

**Figure 18. Torsional Clip Heatsink Measured Thermal Performance versus Approach Velocity**

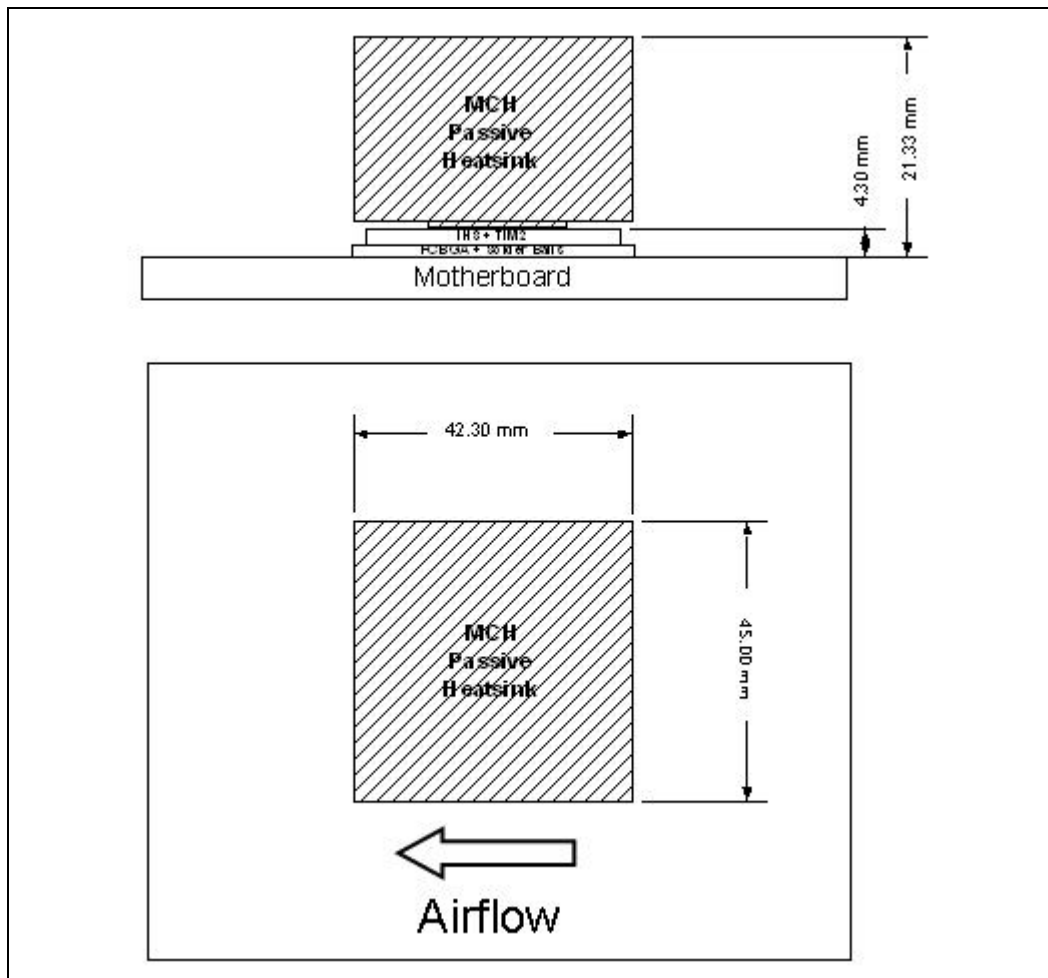


### 6.1.2 Mechanical Design Envelope

While each design may have unique mechanical volume and height restrictions or implementation requirements, the height, width, and depth constraints typically placed on the Intel® 5100 MCH Chipset thermal solution are shown in Figure 19.

When using heatsinks that extend beyond the MCH chipset reference heatsink envelope shown in Figure 19, any motherboard components placed between the heatsink and motherboard cannot exceed 2 mm (0.07") in height.

**Figure 19. AdvancedTCA\* Torsional Clip Heatsink Volumetric Envelope for MCH Heatsink**



### 6.1.3 Board-level Components Keepout Dimensions

The location of hole patterns and keepout zones for the AdvancedTCA\* reference thermal solution are shown in Figure 25. This reference thermal solution has the same hole patterns as that of the Intel® E7500 Series Chipset and Intel® 5000 Series Chipset.

### 6.1.4 Torsional Clip Heatsink Thermal Solution Assembly

The reference thermal solution for the MCH is a passive extruded heatsink with a thermal interface. It is attached using a clip with each end hooked through an anchor soldered to the board. Figure 20 shows the reference thermal solution assembly and associated components. The torsional clip and the clip retention anchor are the same as the ones used on the Intel® E7500 Series Chipset reference thermal solution.

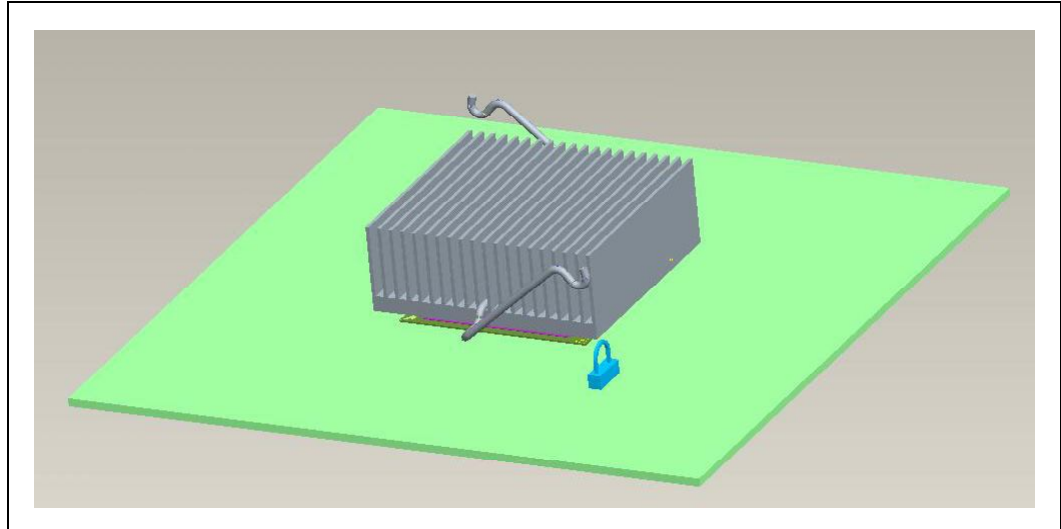


Full mechanical drawings of the thermal solution assembly and the heatsink clip are provided in [Appendix A](#). [Appendix B](#) contains vendor information for each thermal solution component.

### 6.1.5 Heatsink Orientation

Because this solution is based on a unidirectional heatsink, the mean airflow direction must be aligned with the direction of the heatsink fins.

**Figure 20. Torsional Clip Heatsink Assembly**



### 6.1.6 Extruded Heatsink Profiles

The reference thermal solution uses an extruded heatsink for cooling the MCH. [Appendix B](#) lists a supplier for this extruded heatsink. Other heatsinks with similar dimensions and increased thermal performance may be available. A full mechanical drawing of this heatsink is provided in [Appendix A](#).

### 6.1.7 Mechanical Interface Material

There is no mechanical interface material associated with this reference solution.

### 6.1.8 Thermal Interface Material

A thermal interface material (TIM) provides improved conductivity between the IHS and heatsink. The reference thermal solution uses Honeywell\* PCM45F, 0.25 mm (0.010") thick, 25 mm x 25 mm (0.984" x 0.984") squared.

*Note:* Unflowed or "dry" Honeywell\* PCM45F has a material thickness of 0.010". The flowed or "wet" Honeywell\* PCM45F has a material thickness of ~0.003" after it reaches its phase change temperature.



### 6.1.8.1 Effect of Pressure on TIM Performance

As mechanical pressure increases on the TIM, the thermal resistance of the TIM decreases. This phenomenon is due to the decrease of the bond line thickness (BLT). BLT is the final settled thickness of the thermal interface material after installation of heatsink. The effect of pressure on the thermal resistance of the Honeywell\* PCM45F TIM is shown in [Table 6](#).

Intel provides both End of Line and End of Life TIM thermal resistance values of Honeywell\* PCM45F. End of Line and End of Life TIM thermal resistance values are obtained through measurement on a Test Vehicle similar to the Intel® 5000 Series Chipset's physical attributes using an extruded aluminum heatsink. The End of Line value represents the TIM performance post heatsink assembly, while the End of Life value is the predicted TIM performance when the product and TIM reaches the end of its life. The heatsink clip provides enough pressure for the TIM to achieve an End of Line thermal resistance of 0.345 ( $^{\circ}\text{C} \times \text{inches}^2$ )/W and End of Life thermal resistance of 0.459 ( $^{\circ}\text{C} \times \text{inches}^2$ )/W.

**Table 6. Honeywell\* PCM45F TIM Performance as Function of Attach Pressure**

Pressure (psi)	Thermal Resistance ( $^{\circ}\text{C} \times \text{inches}^2$ )/W	
	End of Line	End of Life
2.18	0.319	0.551
4.35	0.345	0.459

### 6.1.9 Heatsink Clip

The reference solution uses a wire clip with hooked ends. The hooks attach to wire anchors to fasten the clip to the board. See [Appendix A](#) for a mechanical drawing of the clip.

### 6.1.10 Clip Retention Anchors

For Intel® 5100 MCH Chipset-based platforms that have very limited board space, a clip retention anchor has been developed to minimize the impact of clip retention on the board. It is based on a standard three-pin jumper and is soldered to the board like any common through-hole header. A new anchor design is available with 45 degree angle bent leads to increase the anchor attach reliability over time. See [Appendix B](#) for the part number and supplier information.

### 6.1.11 Reliability Guidelines

Each motherboard, heatsink, and attach combination may vary the mechanical loading of the component. Based on the end user environment, the user should define the appropriate reliability test criteria and carefully evaluate the completed assembly prior to use in high volume. Some general recommendations are shown in [Table 7](#).

**Table 7. Reliability Guidelines**

Test <sup>1</sup>	Requirement	Pass/Fail Criteria <sup>2</sup>
Mechanical Shock	50 g, board level, 11 ms, three shocks/axis	Visual Check and Electrical Functional Test
Random Vibration	7.3 g, board level, 45 minutes/axis, 50 Hz to 2000 Hz	Visual Check and Electrical Functional Test
Temperature Life	85 °C, 2000 hours total, checkpoints at 168, 500, 1000, and 2000 hours	Visual Check
Thermal Cycling	-5 °C to +70 °C, 500 cycles	Visual Check
Humidity	85% relative humidity, 55 °C, 1000 hours	Visual Check

**Notes:**

1. It is recommended that the above tests be performed on a sample size of at least 12 assemblies from three lots of material.
2. Additional pass/fail criteria may be added at the discretion of the user.

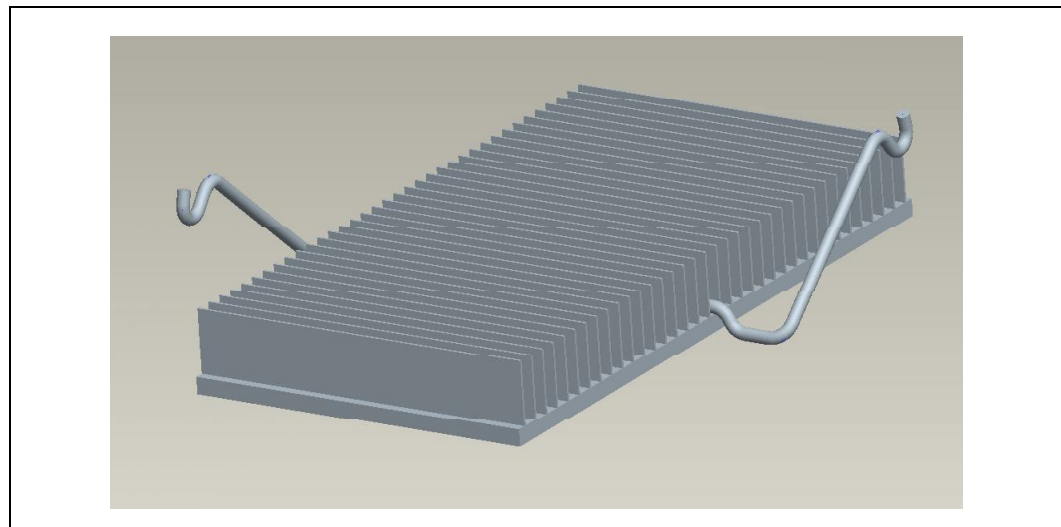
## 6.2 CompactPCI \* Reference Heatsink

Intel has also developed a reference thermal solution compatible with the CompactPCI\* form factor. The reference solution was developed assuming a maximum ambient temperature of 67 °C with a minimum volumetric airflow rate of 10 CFM through each slot. Assuming these boundary conditions are met, the reference thermal solution meets the thermal specifications for Intel® 5100 Memory Controller Hub Chipset.

### 6.2.1 Component Overview

The CompactPCI\* reference heatsink is an extruded aluminum heatsink and does *not* share the same volumetric footprint as the AdvancedTCA\* reference heatsink. Full mechanical drawings of the thermal solution assembly, full mechanical drawings, volumetric footprint, and the heatsink clip are provided in [Appendix A](#). It uses the same spring clip retention and Honeywell\* PCM45F Thermal Interface Material (TIM) as the AdvancedTCA\* reference solution.

Figure 21 shows the isometric view of the CompactPCI\* reference heatsink.

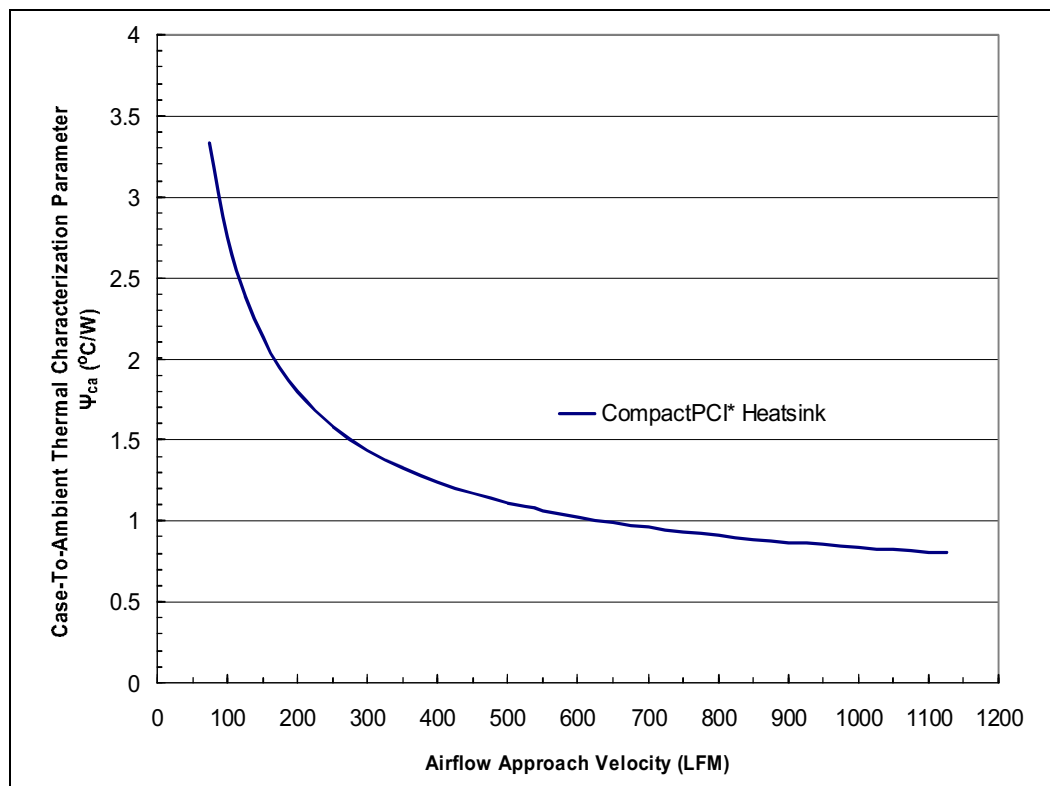
**Figure 21. Isometric View of the CompactPCI \* Reference Heatsink**

**Note:** Refer to [Appendix A](#) for more detailed mechanical drawings of the heatsink.

## 6.2.2 Thermal Solution Performance Characteristics

Figure 22 shows the performance of the CompactPCI\* reference heatsink. This figure shows the thermal performance of the heatsink versus the airflow approach velocity provided.

Figure 22. CompactPCI\* Reference Heatsink Thermal Performance



## 7.0 Reliability Guidelines

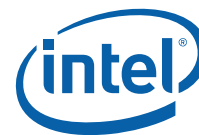
Each motherboard, heatsink, and attach combination may vary the mechanical loading of the component. The user should carefully evaluate the reliability of the completed assembly prior to use in high volume. Some general recommendations are shown in Table 8.

Table 8. Reliability Requirements

Test <sup>1</sup>	Requirement	Pass/Fail Criteria <sup>2</sup>
Mechanical Shock	50 g, board level, 11 ms, three shocks/axis	Visual Check and Electrical Functional Test
Random Vibration	7.3 g, board level, 45 minutes/axis, 50 Hz to 2000 Hz	Visual Check and Electrical Functional Test
Temperature Life	85 °C, 2000 hours total, checkpoints at 168, 500, 1000, and 2000 hours	Visual Check
Thermal Cycling	-5 °C to +70 °C, 500 cycles	Visual Check
Humidity	85% relative humidity, 55 °C, 1000 hours	Visual Check

**Notes:**

- The above tests should be performed on a sample size of at least 12 assemblies from three lots of material.
- Additional pass/fail criteria may be added at the discretion of the user.



## Appendix A Mechanical Drawings

Table 9 lists the mechanical drawings included in this appendix.

**Table 9. Mechanical Drawing List**

Drawing Description	Figure Number
AdvancedTCA* Heatsink Assembly	Figure 23
AdvancedTCA* Heatsink	Figure 24
AdvancedTCA* Component Keepout Zone	Figure 25
CompactPCI* Heatsink Assembly	Figure 26
CompactPCI* Heatsink	Figure 27
CompactPCI* Component Keepout Zone	Figure 28
Reference Heatsink Torsional Clip	Figure 29
TIM2	Figure 30

Figure 23. AdvancedTCA\* Heatsink Assembly Drawing

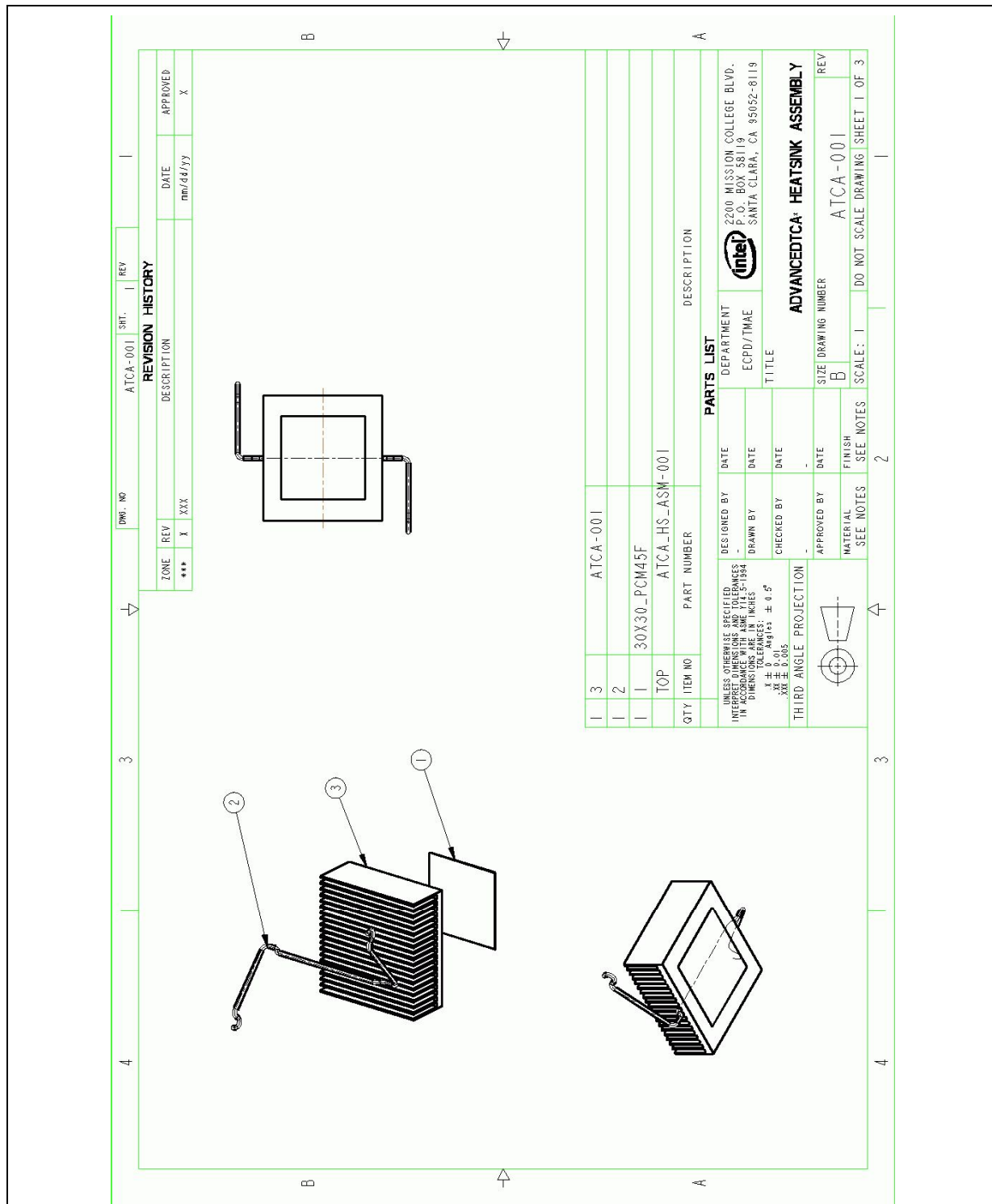
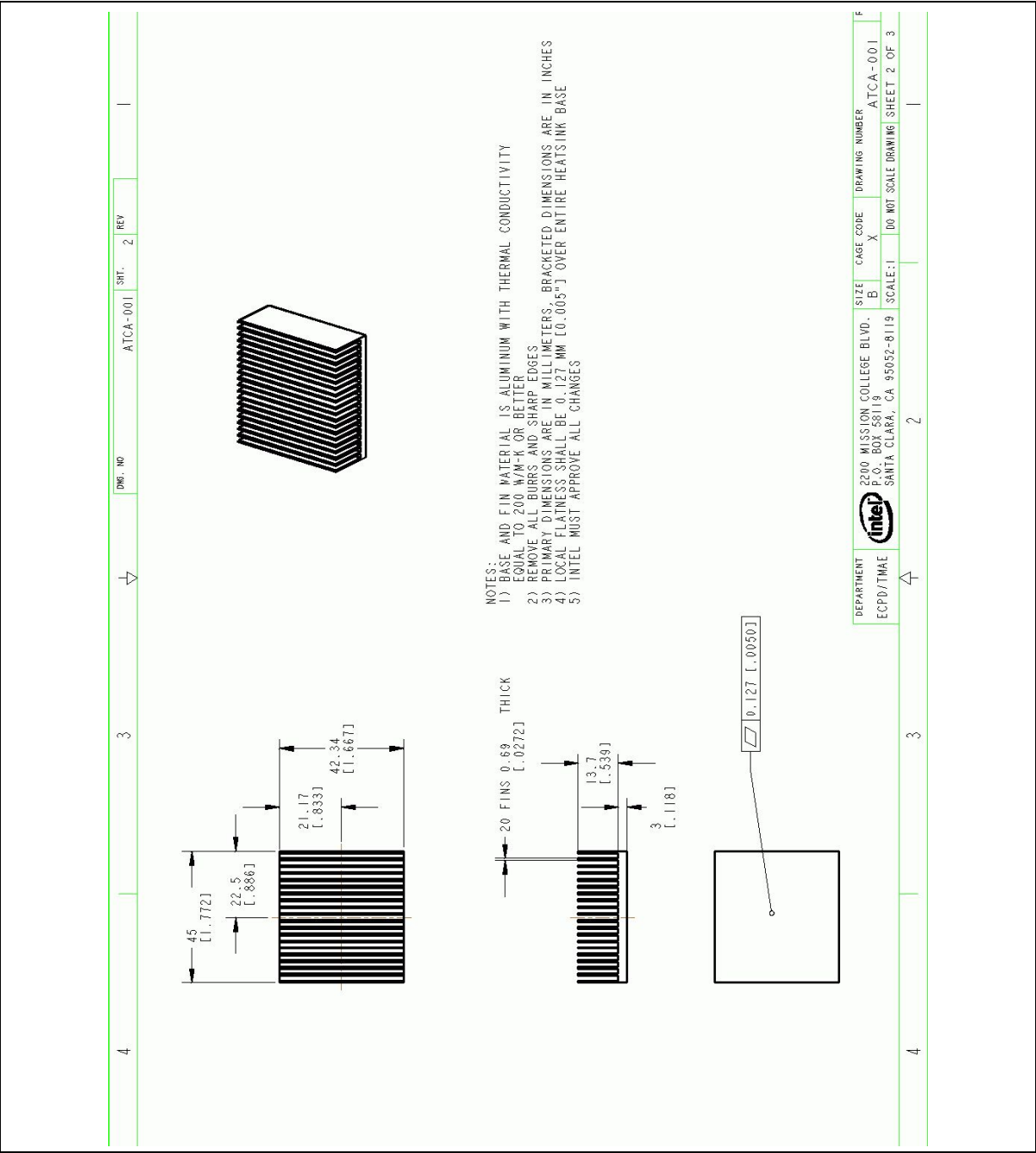






Figure 24. AdvancedTCA\* Heatsink Drawing



1

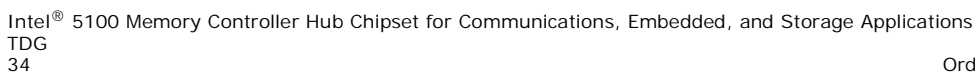




Figure 26. CompactPCI \* Heatsink Assembly Drawing

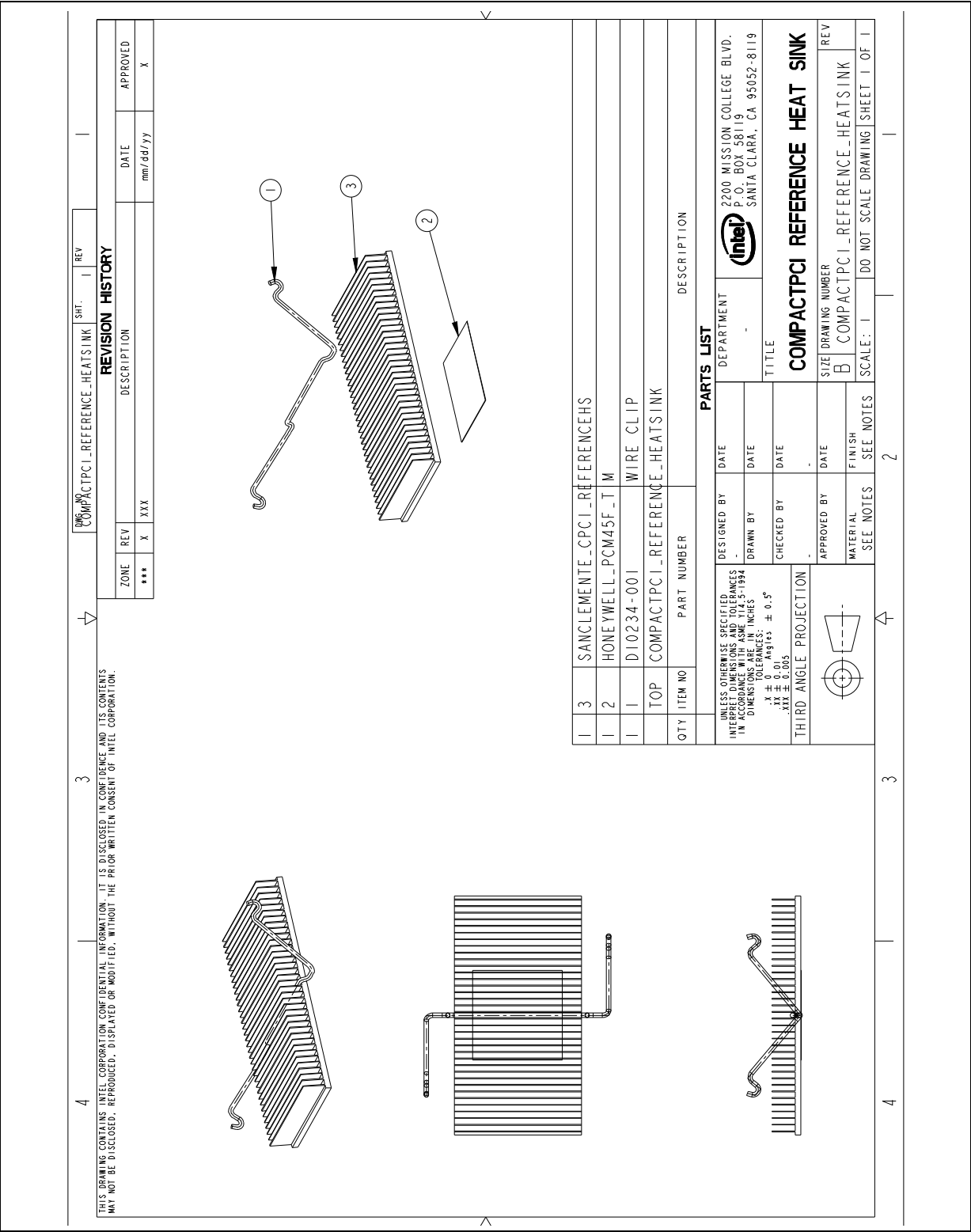
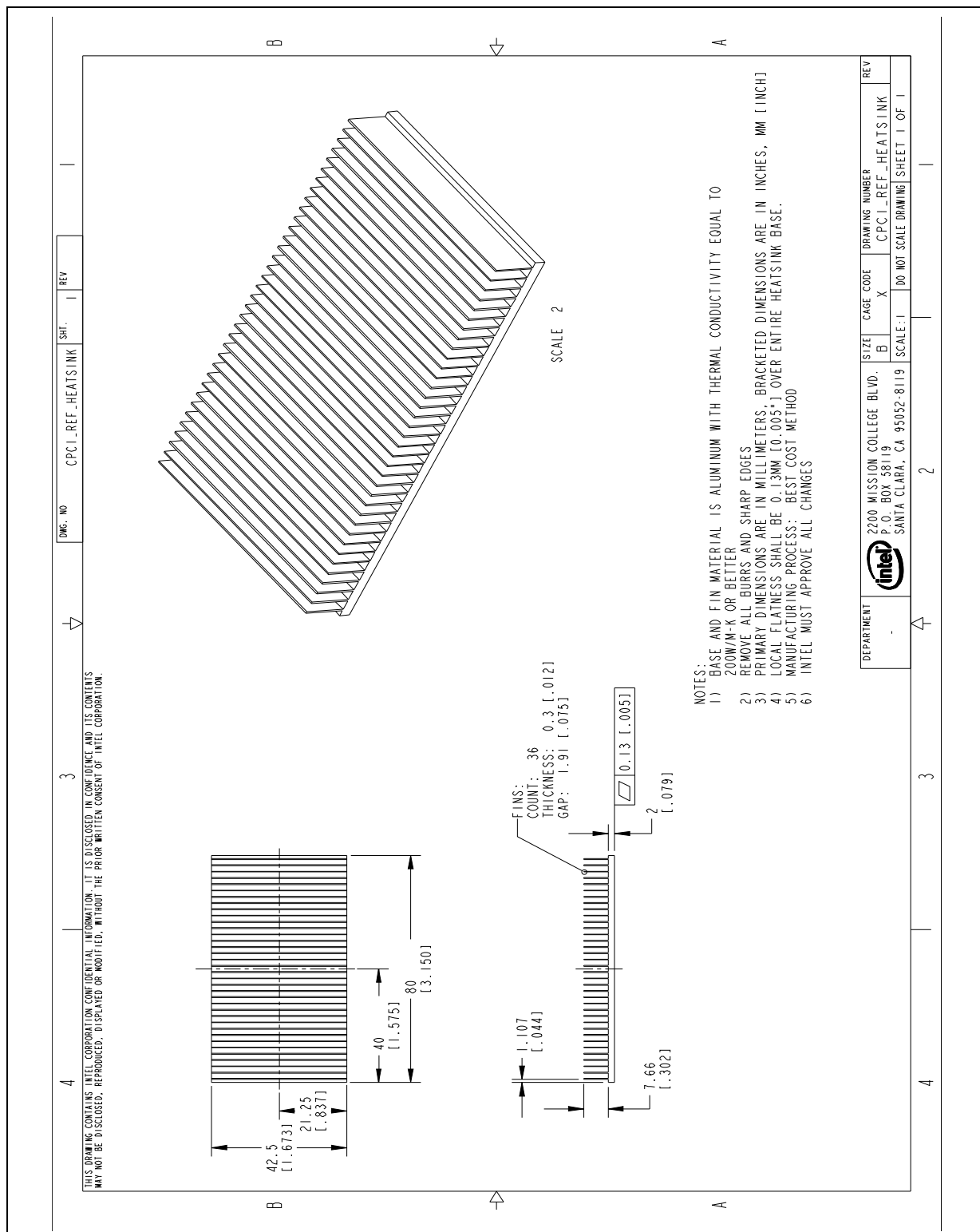


Figure 27. CompactPCI \* Heatsink Drawing



THIS DRAWING CONTAINS INTEL CORPORATION CONFIDENTIAL INFORMATION. IT IS DISCLOSED IN CONFIDENCE AND ITS CONTENTS MAY NOT BE DISCLOSED, REPRODUCED, DISPLAYED OR MODIFIED, WITHOUT THE PRIOR WRITTEN CONSENT OF INTEL CORPORATION.

8 7 6 5 4 3 2 1

SECTION A

SECTION B

SECTION C

SECTION D

SECTION E

SECTION F

SECTION G

SECTION H

SECTION I

SECTION J

SECTION K

SECTION L

SECTION M

SECTION N

SECTION O

SECTION P

SECTION Q

SECTION R

SECTION S

SECTION T

SECTION U

SECTION V

SECTION W

SECTION X

SECTION Y

SECTION Z

SECTION AA

SECTION AB

SECTION AC

SECTION AD

SECTION AE

SECTION AF

SECTION AG

SECTION AH

SECTION AI

SECTION AJ

SECTION AK

SECTION AL

SECTION AM

SECTION AN

SECTION AO

SECTION AP

SECTION AQ

SECTION AR

SECTION AS

SECTION AT

SECTION AU

SECTION AV

SECTION AW

SECTION AX

SECTION AY

SECTION AZ

SECTION BA

SECTION BB

SECTION BC

SECTION BD

SECTION BE

SECTION BF

SECTION BG

SECTION BH

SECTION BI

SECTION BJ

SECTION BK

SECTION BL

SECTION BM

SECTION BN

SECTION BO

SECTION BP

SECTION BQ

SECTION BR

SECTION BS

SECTION BT

SECTION BU

SECTION BV

SECTION BW

SECTION BX

SECTION BY

SECTION BZ

SECTION CA

SECTION CB

SECTION CC

SECTION CD

SECTION CE

SECTION CF

SECTION CG

SECTION CH

SECTION CI

SECTION CJ

SECTION CK

SECTION CL

SECTION CM

SECTION CN

SECTION CO

SECTION CP

SECTION CQ

SECTION CR

SECTION CS

SECTION CT

SECTION CU

SECTION CV

SECTION CW

SECTION CX

SECTION CY

SECTION CZ

SECTION DA

SECTION DB

SECTION DC

SECTION DD

SECTION DE

SECTION DF

SECTION DG

SECTION DH

SECTION DI

SECTION DJ

SECTION DK

SECTION DL

SECTION DM

SECTION DN

SECTION DO

SECTION DP

SECTION DQ

SECTION DR

SECTION DS

SECTION DT

SECTION DU

SECTION DV

SECTION DW

SECTION DX

SECTION DY

SECTION DZ

SECTION EA

SECTION EB

SECTION EC

SECTION ED

SECTION EE

SECTION EF

SECTION EG

SECTION EH

SECTION EI

SECTION EJ

SECTION EK

SECTION EL

SECTION EM

SECTION EN

SECTION EO

SECTION EP

SECTION EQ

SECTION ER

SECTION ES

SECTION ET

SECTION EU

SECTION EV

SECTION EW

SECTION EX

SECTION EY

SECTION EZ

SECTION FA

SECTION FB

SECTION FC

SECTION FD

SECTION FE

SECTION FF

SECTION FG

SECTION FH

SECTION FI

SECTION FJ

SECTION FK

SECTION FL

SECTION FM

SECTION FN

SECTION FO

SECTION FP

SECTION FQ

SECTION FR

SECTION FS

SECTION FT

SECTION FU

SECTION FV

SECTION FW

SECTION FX

SECTION FY

SECTION FZ

SECTION GA

SECTION GB

SECTION GC

SECTION GD

SECTION GE

SECTION GF

SECTION GG

SECTION GH

SECTION GI

SECTION GJ

SECTION GK

SECTION GL

SECTION GM

SECTION GN

SECTION GO

SECTION GP

SECTION GQ

SECTION GR

SECTION GS

SECTION GT

SECTION GU

SECTION GV

SECTION GW

SECTION GX

SECTION GY

SECTION GZ

SECTION HA

SECTION HB

SECTION HC

SECTION HD

SECTION HE

SECTION HF

SECTION HG

SECTION HH

SECTION HI

SECTION HJ

SECTION HK

SECTION HL

SECTION HM

SECTION HN

SECTION HO

SECTION HP

SECTION HQ

SECTION HR

SECTION HS

SECTION HT

SECTION HU

SECTION HV

SECTION HW

SECTION HX

SECTION HY

SECTION HZ

SECTION IA

SECTION IB

SECTION IC

SECTION ID

SECTION IE

SECTION IF

SECTION IG

SECTION IH

SECTION II

SECTION IJ

SECTION IK

SECTION IL

SECTION IM

SECTION IN

SECTION IO

SECTION IP

SECTION IQ

SECTION IR

SECTION IS

SECTION IT

SECTION IU

SECTION IV

SECTION IW

SECTION IX

SECTION IY

SECTION IZ

SECTION JA

SECTION JB

SECTION JC

SECTION JD

SECTION JE

SECTION JF

SECTION JG

SECTION JH

SECTION JI

SECTION JJ

SECTION JK

SECTION JL

SECTION JM

SECTION JN

SECTION JO

SECTION JP

SECTION JQ

SECTION JR

SECTION JS

SECTION JT

SECTION JU

SECTION JV

SECTION JW

SECTION JX

SECTION JY

SECTION JZ

SECTION KA

SECTION KB

SECTION KC

SECTION KD

SECTION KE

SECTION KF

SECTION KG

SECTION KH

SECTION KI

SECTION KJ

SECTION KK

SECTION KL

SECTION KM

SECTION KN

SECTION KO

SECTION KP

SECTION KQ

SECTION KR

SECTION KS

SECTION KT

SECTION KU

SECTION KV

SECTION KW

SECTION KX

SECTION KY

SECTION KZ

SECTION LA

SECTION LB

SECTION LC

SECTION LD

SECTION LE

SECTION LF

SECTION LG

SECTION LH

SECTION LI

SECTION LJ

SECTION LK

SECTION LL

SECTION LM

SECTION LN

SECTION LO

SECTION LP

SECTION LQ

SECTION LR

SECTION LS

SECTION LT

SECTION LU

SECTION LV

SECTION LW

SECTION LX

SECTION LY

SECTION LZ

SECTION MA

SECTION MB

SECTION MC

SECTION MD

SECTION ME

SECTION MF

SECTION MG

SECTION MH

SECTION MI

SECTION MJ

SECTION MK

SECTION ML

SECTION MM

SECTION MN

SECTION MO

SECTION MP

SECTION MQ

SECTION MR

SECTION MS

SECTION MT

SECTION MU

SECTION MV

SECTION MW

SECTION MX

SECTION MY

SECTION MZ

SECTION NA

SECTION NB

SECTION NC

SECTION ND

SECTION NE

SECTION NF

SECTION NG

SECTION NH

SECTION NI

SECTION NJ

SECTION NK

SECTION NL

SECTION NM

SECTION NN

SECTION NO

SECTION NP

SECTION NQ

SECTION NR

SECTION NS

SECTION NT

SECTION NU

SECTION NV

SECTION NW

SECTION NX

SECTION NY

SECTION NZ

SECTION OA

SECTION OB

SECTION OC

SECTION OD

SECTION OE

SECTION OF

SECTION OG

SECTION OH

SECTION OI

SECTION OJ

SECTION OK

SECTION OL

SECTION OM

SECTION ON

SECTION OO

SECTION OP

SECTION OQ

SECTION OR

SECTION OS

SECTION OT

SECTION OU

SECTION OV

SECTION OW

SECTION OX

SECTION OY

SECTION OZ

SECTION PA

SECTION PB

SECTION PC

SECTION PD

SECTION PE

SECTION PF

SECTION PG

SECTION PH

SECTION PI

SECTION PJ

SECTION PK

SECTION PL

SECTION PM

SECTION PN

SECTION PO

SECTION PP

SECTION PQ

SECTION PR

SECTION PS

SECTION PT

SECTION PU

SECTION PV

SECTION PW

SECTION PX

SECTION PY

SECTION PZ

SECTION QA

SECTION QB

SECTION QC

SECTION QD

SECTION QE

SECTION QF

SECTION QG

SECTION QH

SECTION QI

SECTION QJ

SECTION QK

SECTION QL

SECTION QM

SECTION QN

SECTION QO

SECTION QP

SECTION QQ

SECTION QR

SECTION QS

SECTION QT

SECTION QU

SECTION QV

SECTION QW

SECTION QX

SECTION QY

SECTION QZ

SECTION RA

SECTION RB

SECTION RC

SECTION RD

SECTION RE

SECTION RF

SECTION RG

SECTION RH

SECTION RI

SECTION RJ

SECTION RK

SECTION RL

SECTION RM

SECTION RN

SECTION RO

SECTION RP

SECTION RQ

SECTION RR

SECTION RS

SECTION RT

SECTION RU

SECTION RV

SECTION RW

SECTION RX

SECTION RY

SECTION RZ

SECTION SA

SECTION SB

SECTION SC

SECTION SD

SECTION SE

SECTION SF

SECTION SG

SECTION SH

SECTION SI

SECTION SJ

SECTION SK

SECTION SL

SECTION SM

SECTION SN

SECTION SO

SECTION SP

SECTION SQ

SECTION SR

SECTION SS

SECTION ST

SECTION SU

SECTION SV

SECTION SW

SECTION SX

SECTION SY

SECTION SZ

SECTION TA

SECTION TB

SECTION TC

SECTION TD

SECTION TE

SECTION TF

SECTION TG

SECTION TH

SECTION TI

SECTION TJ

SECTION TK

SECTION TL

SECTION TM

SECTION TN

SECTION TO

SECTION TP

SECTION TQ

SECTION TR

SECTION TS

SECTION TT

SECTION TU

SECTION TV

SECTION TW

SECTION TX

SECTION TY

SECTION TZ

SECTION UA

SECTION UB

SECTION UC

SECTION UD

SECTION UE

SECTION UF

SECTION UG

SECTION UH

SECTION UI

SECTION UJ

SECTION UK

SECTION UL

SECTION UM

SECTION UN

SECTION UO

SECTION UP

SECTION UQ

SECTION UR

Figure 29. Torsional Clip Heatsink Clip Drawing

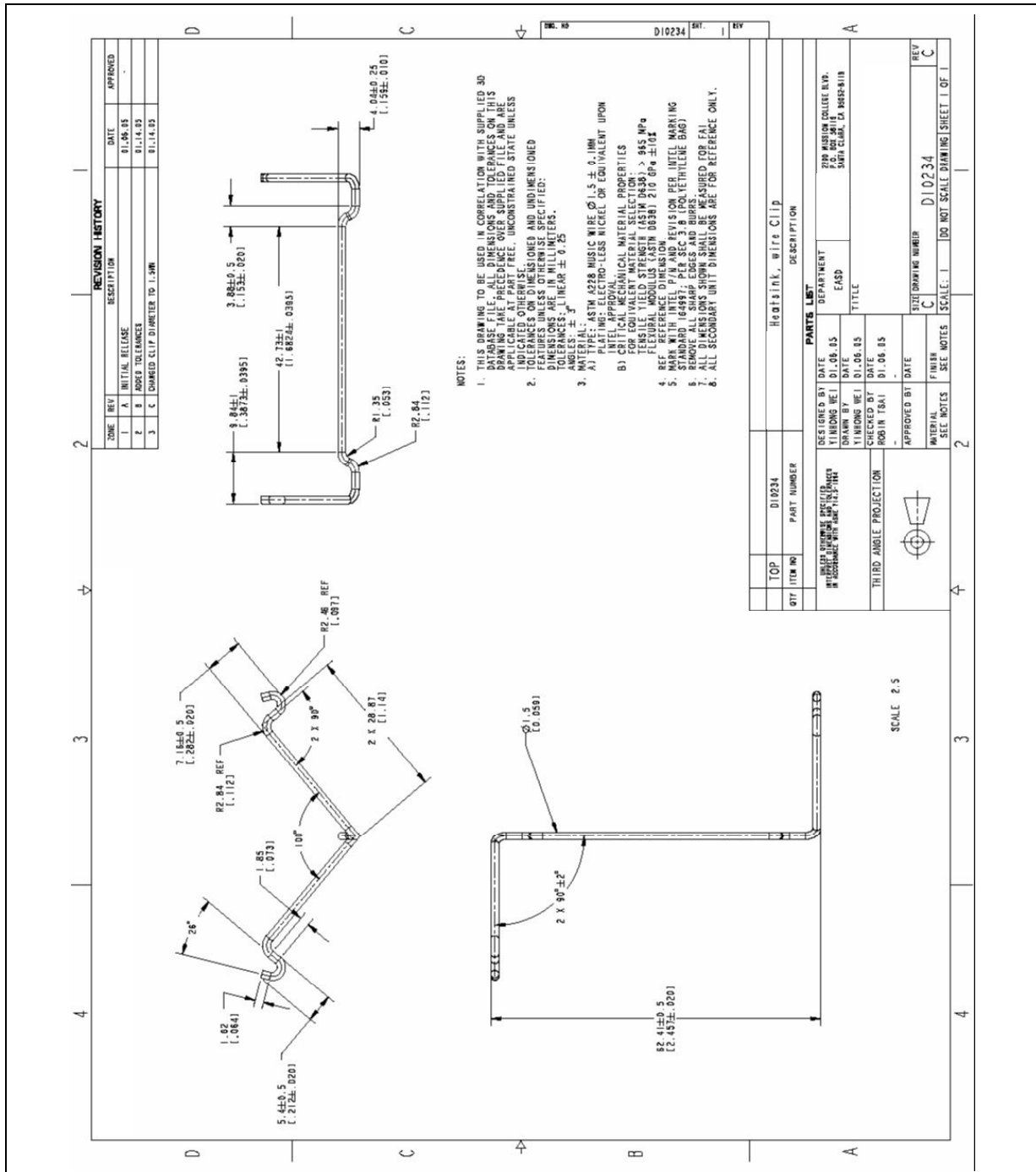
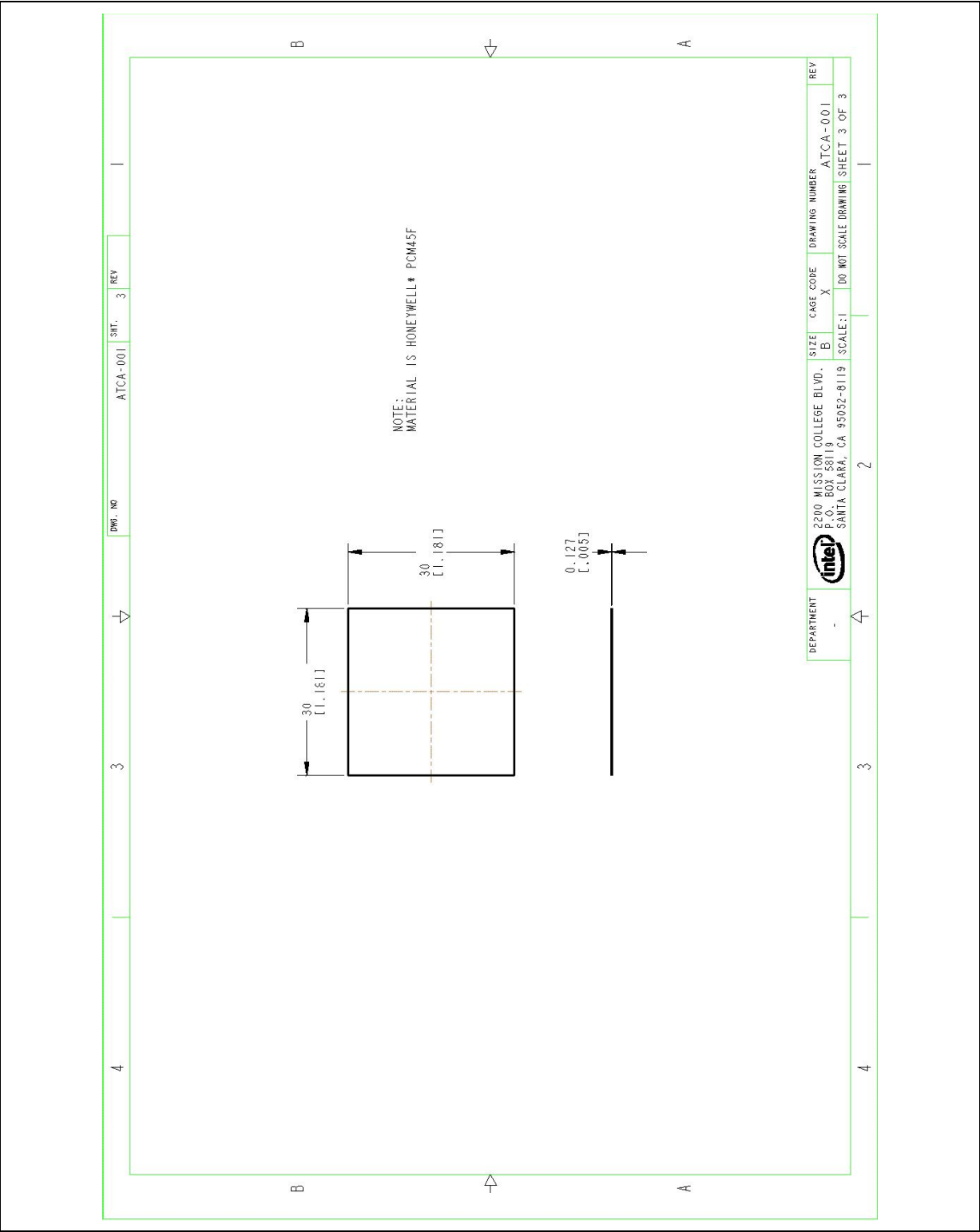




Figure 30. TIM2 Drawing





## Appendix B Thermal Solution Component Suppliers

Table 10. MCH Torsional Clip Heatsink Thermal Solution

Part	Intel Part Number	Supplier (Part Number)	Contact Information
AdvancedTCA* reference heatsink	D96852-001	Cooler Master* (ECC-00527-01-GP)	Wendy Lin (USA) 510-770-8566 x211 wendy@coolermaster.com
CompactPCI* reference heatsink	E45550-001	Cooler Master* (ECB-00590-01-GP)	
Thermal interface	C34795-001	Honeywell* (PCM45F)	Scott Miller 509-252-2206 scott.miller4@honeywell.com Paula Knoll 858-279-2956 paula_knoll@honeywell.com
Heatsink attach clip	D10234-001	CCI*/ACK	Harry Lin (USA) 714-739-5797 hlinack@aol.com Monica Chih (Taiwan) 866-2-29952666, x1131 monica_chih@ccic.com.tw
		Foxconn*	Bob Hall (USA) 503-693-3509, x235 bhall@foxconn.com
Solder-down anchor	A13494-005	Foxconn (HB96030-DW)	Julia Jiang (USA) 408-919-6178 julijj@foxconn.com

**Note:** The enabled components may not be currently available from all suppliers. Contact the supplier directly to verify the time of component availability.