

TST 4U Blade B410PT For Intel S3000PT HPC board



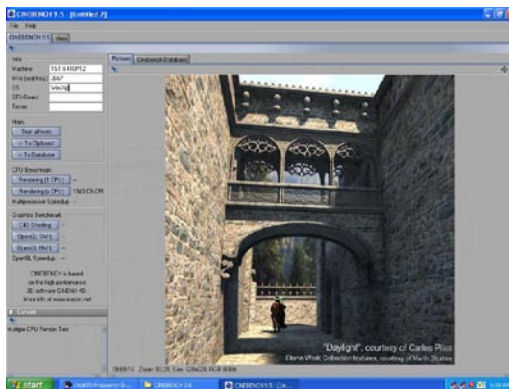
Build Unique Storage Solutions with a Technology Edge

The TST B410PT blade enclosure is designed for applications requiring high density with a lower cost, lower power consumption, and lower complexity as an all-in-one self-contained unit. It is perfect as an alternative solution for HPC, rendering, and streaming applications, as well as, distributed server for web and application hosting. The B410PT, with its pedestal ability, provides a further option to become a desk-side cluster or personal supercomputer. This solution is fully compatible and optimally designed for thermals required by Intel's Dual/Quad core Xeon 3000 series, Core 2 Duo, and Core 2 Quadro products.



Features and Benefits

- Supports Intel S3000PT server boards
- Support 1 half height 3.5" Hard Disk per blade
- Total 10 system per each 4U chassis
- Included fixed mounting slide rail
- Cinebench 1348CB-CPi with Core 2 Quadro



Chassis Specification

- EIA 310-D standard 4U chassis
- Dimension 19"Wx7"Hx28"D
- Corrosion-resistant Aluminum Alloy construction
- Includes 10 Swappable blade carriers
- Support Intel S3000PT Board
- PWM system fan control
- Front Panel includes:

Buttons and Switches: Power on/off (momentary) button

LEDs: Power, Hard-Disk activity

Connectors: Two USB ports, One serial port
One video port, Two NIC

- Support 1 x 3.5" internal hard-disk drive
- 275W high efficiency 80+ power supply



TST Corp www.tstcom.com
14257 E Don Julian RD, City of Industry, CA 91746, USA
Tel: 626-968-8851 Fax: 626-968-5518 email:info@tstcom.com

IMAGINATION
IS
CREATION